



3/2 Bleed Actuated Spool Valve Pressure Actuated G¹/₈

- Very low pilot pressure
- High sensitivity bleed operated valve
- Exhaust port protected by filter disc



Technical Data

Medium:

Compressed air, filtered, lubricated and non-lubricated

Operation:

Poppet Valve, bleed actuated

Mounting:

Integral bracket

Port Size:

G¹/₈

Operating Pressure:

4 - 10 bar

Flow Characteristics:

	'C'	'b'	'A'	l/min	Cv	Kv
M/21	,65	0,17	2,6	158	0,16	0,14

Operating Temperature:

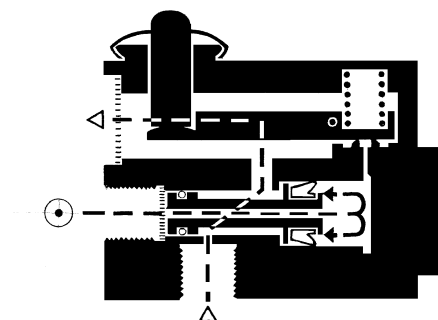
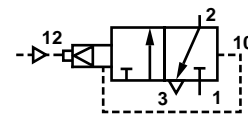
+5°C* to +80°C

Materials:

Diecast zinc alloy body, steel piston, nitrile rubber seals

Ordering Information

To order, quote model number M/21/342. For mechanically operated models see Section 5.6.071





General Information

Symbol	Model	Operator	Return	Operating Pressure (bar)	Pilot Pressure (bar)	Weight (kg)	Spares Kit Ref.
	M/21/342	Pilot	Air	4 - 10	0.0025 - 0,3	0,65	QM/21/342/00

Warning

These products are intended for use in industrial compressed air systems only. Do not use these products where *pressures* and *temperatures* can exceed those listed under **Technical Data**. Before using these products with fluids other than those specified, for non-industrial applications, life-support systems, or other applications not within published specifications, consult Norgren. Through misuse, age, or malfunction, components used in fluid power systems can fail in various modes. The system designer is warned to consider the failure modes of all component parts used in fluid power systems and to provide adequate safeguards to prevent personal injury or damage to equipment in the event of such failure. **System designers must provide a warning to end users in the system instructional manual if protection against a failure mode cannot be adequately provided.** System designers and end users are cautioned to review specific warnings found in instruction sheets packed and shipped with these products where applicable.

M/21

3/2 Diaphragm Pilot Actuated Valve

