


**2/2, 3/2 poppet valves
Electrically actuated
Rc1/8, Rc1/4**

- Ideal for a wide variety of industrial applications
- Quick easy installation
- Low power solenoids
- Simple, compact design and construction

Technical data valves
Medium:

Neutral gaseous and liquid fluids,
air and vacuum compatibility is based on combination
of body and seal materials

Operation:

Poppet valve, directly actuated with spring return

Port size:

Rc1/8, Rc1/4, M8x1 series 2
Rc1/8, Rc1/4, M12 x 1 series 6

Operating pressure:

Maximum 82,5 bar (see individual details)

Flow:
Body

Kv max.	Kv min.	
0,254	0,025	series 2
0,508	0,029	series 6

Stop

Kv max.	Kv min.	
0,117	0,021	series 2
0,225	0,020	series 6

Power rating:

7 W	series 2
10 W	series 6

Operating temperature:

-20°C to 130°C

Lead wire type:

AWG 18 or 20	series 2
AWG 18	series 6

Cable Length:

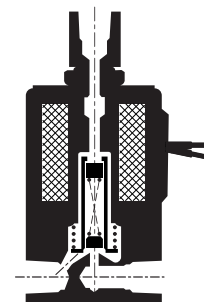
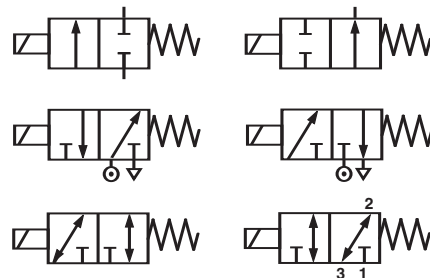
610 mm (black colour)

Material

Body: brass or stainless steel
Seals: Buna, fluorocarbon, Ethylene propylene, Neoprene W® or
Teflon® (please see model codes)
adapters (3 way only): stainless steel

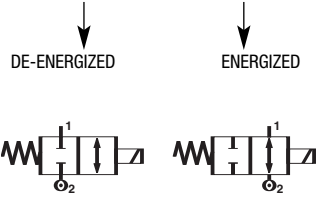

Ordering information

See model codes





2-Way Normally Closed

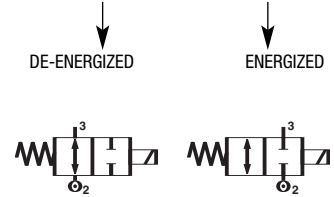


Port Identification:
IN – 2
OUT – 1

Series	Orifice Diameter (mm)		Kv	MOPD* (bar)
	Body	Stop		
2	0,8	0,029	69,0	
	1,2	0,042	41,5	
	1,5	0,080	27,5	
	2,0	0,113	20,5	
	2,4	0,146	17,5	
	3,0	0,204	10,5	
	4,0	0,242	7,0	
	4,8**	0,321	3,0	
	6,0**	0,375	1,0	
6	0,8	0,029	83,0	
	1,2	0,042	69,0	
	1,5	0,79	34,5	
	2,0	0,116	20,5	
	2,4	0,170	14,0	
	3,0	0,246	10,5	
	4,0	0,310	7,5	
	4,8	0,363	4,0	
	6,0	0,510	2,0	

* Max. operating pressure differential
** Only available with Rc 1/4 port

2-Way Normally Open

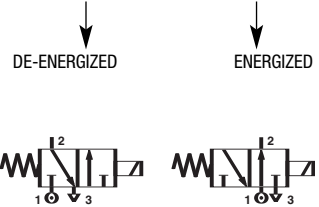


Port Identification:
IN – 2
OUT – 3

Series	Orifice Diameter (mm)		Kv	MOPD* (bar)
	Body	Stop		
2	0,8	0,029	27,5	
	1,2	0,042	20,5	
	1,5	0,080	12,5	
	2,0	0,113	9,5	
6	0,8	0,029	69,0	
	1,2	0,042	41,5	
	1,5	0,080	24,0	
	2,0	0,113	17,5	
	3,0	0,170	12,0	

* Max. operating pressure differential

3-Way Normally Closed

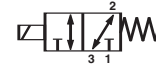


Port Identification:
IN – 1
CYL – 2
EXH – 3

Series	Orifice Diameter (mm)		Kv		MOPD* (bar)
	Body	Stop	Body	Stop	
2	0,8	0,8	0,029	0,021	17,5
	1,2	1,2	0,042	0,054	12,0
	1,5	1,5	0,071	0,096	8,5
	2,0	2,0#	0,104	0,120	7,0
	2,4	2,0#	0,138	0,120	5,0
	3,0	2,0#	0,20	0,120	3,0
	4,0	2,0#	0,237	0,120	1,5
	4,8**	2,0#	0,288	0,120	0,5
	6,0**	2,0#	0,346	0,120	0,5
	6	0,8	0,8	0,029	0,021
1,2		1,2	0,042	0,054	17,5
1,5		1,5	0,075	0,096	14,0
2,0		2,0	0,112	0,15	12,5
2,4		2,4	0,15	0,175	8,5
3,0		3,0	0,230	0,20	6,0
4,0		3,0	0,310	0,20	3,5
4,8		3,0	0,380	0,20	2,0
6,0		3,0	0,542	0,20	1,0

* Max. operating pressure differential
Larger stop orifice available with reduced pressure ratings; please consult Norgren
** Only available with Rc 1/4 port

3-Way Multi Purpose



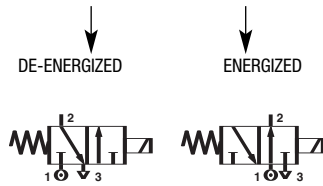
Port Identification:
N.C. – 1
COM – 2
N.O. – 3

Series	Orifice Diameter (mm)		Kv		MOPD* (bar)
	Body	Stop	Body	Stop	
2	0,8	0,8	0,029	0,021	12,0
	1,2	1,2	0,042	0,054	8,5
	1,5	1,5	0,071	0,096	7,0
	2,0	2,0#	0,104	0,120	5,0
	2,4	2,0#	0,138	0,120	3,5
	3,0	2,0#	0,20	0,120	1,5
	4,0	2,0#	0,237	0,120	1,0
	4,8**	2,0#	0,288	0,120	0,5
	6,0**	2,0#	0,346	0,120	0,5
	6	0,8	0,8	0,029	0,021
1,2		1,2	0,042	0,054	14,0
1,5		1,5	0,075	0,096	12,0
2,0		2,0	0,112	0,15	8,5
2,4		2,4	0,15	0,175	7,0
3,0		3,0	0,230	0,20	4,0
4,0		3,0	0,310	0,20	3,0
4,8		3,0	0,380	0,20	1,5
6,0		3,0	0,542	0,20	1,0

* Max. operating pressure differential
Larger stop orifice available with reduced pressure ratings; please consult Norgren
** Only available with Rc 1/4 port



3-Way Normally Open



Port Identification:
EXH – 1
CYL – 2
IN – 3

Series	Orifice Diameter (mm)		Kv		MOPD* (bar)
	Body	Stop	Body	Stop	
2	0,8	0,8	0,029	0,021	14,0
	1,2	1,2	0,042	0,054	10,5
	1,5	1,5	0,071	0,096	8,5
	2,0	2,0#	0,104	0,120	7,0
	2,4	2,0#	0,138	0,120	5,0
	3,0	2,0#	0,2	0,120	4,0
	4,0	2,0#	0,237	0,120	1,5
	4,8**	2,0#	0,288	0,120	0,5
	6,0**	2,0#	0,346	0,120	0,3
6	0,8	0,8	0,029	0,021	27,5
	1,2	1,2	0,042	0,054	17,5
	1,5	1,5	0,075	0,096	14,0
	2,0	2,0	0,112	0,15	12,0
	2,4	2,4	0,15	0,175	8,5
	3,0	3,0	0,230	0,20	6,0
	4,0	3,0	0,310	0,20	3,5
	4,8	3,0	0,380	0,20	2,5
	6,0	3,0	0,650	0,20	1,0

* Max. operating pressure differential
Larger stop orifice available with reduced pressure ratings; please consult Technical Service
** Only available with Rc 1/4 port

Model Codes

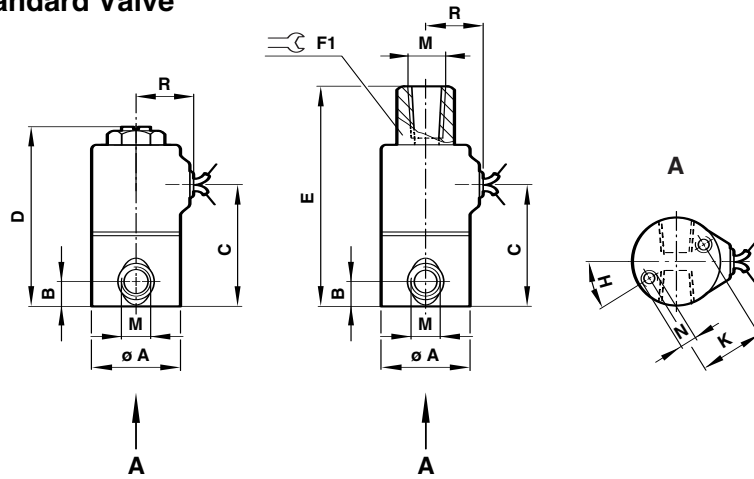
*****-**-*****

<table border="1"> <thead> <tr> <th>Prefixes (Optional)</th> <th>Substitute</th> </tr> </thead> <tbody> <tr> <td>UL Recognized</td> <td>U</td> </tr> <tr> <td>Oxygen Service</td> <td>Y</td> </tr> <tr> <td>Low Wattage -1.5 Watt*</td> <td>A</td> </tr> <tr> <td>Low Wattage -2.0 Watt*</td> <td>B</td> </tr> <tr> <td>Low Wattage -2.5 Watt*</td> <td>C</td> </tr> <tr> <td>Low Wattage -3.0 Watt*</td> <td>D</td> </tr> </tbody> </table>	Prefixes (Optional)	Substitute	UL Recognized	U	Oxygen Service	Y	Low Wattage -1.5 Watt*	A	Low Wattage -2.0 Watt*	B	Low Wattage -2.5 Watt*	C	Low Wattage -3.0 Watt*	D		<table border="1"> <thead> <tr> <th>Voltage</th> <th>Substitute</th> </tr> </thead> <tbody> <tr> <td>12 V DC</td> <td>12VDC</td> </tr> <tr> <td>24 V DC</td> <td>24VDC</td> </tr> <tr> <td>24 V 60 Hz</td> <td>24/60</td> </tr> <tr> <td>120 V 60 Hz</td> <td>120/60</td> </tr> <tr> <td>110 V 50 Hz</td> <td>110/50</td> </tr> <tr> <td>220 V 50 Hz</td> <td>220/50</td> </tr> <tr> <td>240 V 60 Hz</td> <td>240/60</td> </tr> </tbody> </table>	Voltage	Substitute	12 V DC	12VDC	24 V DC	24VDC	24 V 60 Hz	24/60	120 V 60 Hz	120/60	110 V 50 Hz	110/50	220 V 50 Hz	220/50	240 V 60 Hz	240/60
Prefixes (Optional)	Substitute																															
UL Recognized	U																															
Oxygen Service	Y																															
Low Wattage -1.5 Watt*	A																															
Low Wattage -2.0 Watt*	B																															
Low Wattage -2.5 Watt*	C																															
Low Wattage -3.0 Watt*	D																															
Voltage	Substitute																															
12 V DC	12VDC																															
24 V DC	24VDC																															
24 V 60 Hz	24/60																															
120 V 60 Hz	120/60																															
110 V 50 Hz	110/50																															
220 V 50 Hz	220/50																															
240 V 60 Hz	240/60																															
<table border="1"> <thead> <tr> <th>Series</th> <th>Substitute</th> </tr> </thead> <tbody> <tr> <td>2</td> <td>2</td> </tr> <tr> <td>6</td> <td>6</td> </tr> </tbody> </table>	Series	Substitute	2	2	6	6	<table border="1"> <thead> <tr> <th>Seal</th> <th>Substitute</th> </tr> </thead> <tbody> <tr> <td>Buna</td> <td>01</td> </tr> <tr> <td>Fluorocarbon</td> <td>02</td> </tr> <tr> <td>Teflon® (2-Way Normally Closed only)</td> <td>08</td> </tr> <tr> <td>Neoprene W®</td> <td>12</td> </tr> <tr> <td>Ethylene Propylene (EPR), Food Grade</td> <td>13</td> </tr> </tbody> </table>	Seal	Substitute	Buna	01	Fluorocarbon	02	Teflon® (2-Way Normally Closed only)	08	Neoprene W®	12	Ethylene Propylene (EPR), Food Grade	13													
Series	Substitute																															
2	2																															
6	6																															
Seal	Substitute																															
Buna	01																															
Fluorocarbon	02																															
Teflon® (2-Way Normally Closed only)	08																															
Neoprene W®	12																															
Ethylene Propylene (EPR), Food Grade	13																															
<table border="1"> <thead> <tr> <th>Port</th> <th>Substitute</th> </tr> </thead> <tbody> <tr> <td>Rc 1/8</td> <td>A</td> </tr> <tr> <td>Rc 1/4</td> <td>B</td> </tr> <tr> <td>Manifold Mount (M8 x 1, Series 2), (M12 x 1, Series 6)</td> <td>C</td> </tr> </tbody> </table>	Port	Substitute	Rc 1/8	A	Rc 1/4	B	Manifold Mount (M8 x 1, Series 2), (M12 x 1, Series 6)	C	<table border="1"> <thead> <tr> <th>Orifice</th> <th>Substitute</th> </tr> </thead> <tbody> <tr> <td>0,8 mm</td> <td>0</td> </tr> <tr> <td>1,2 mm</td> <td>1</td> </tr> <tr> <td>1,5 mm</td> <td>2</td> </tr> <tr> <td>2,0 mm</td> <td>3</td> </tr> <tr> <td>2,4 mm</td> <td>4</td> </tr> <tr> <td>3,0 mm</td> <td>5</td> </tr> <tr> <td>4,0 mm</td> <td>6</td> </tr> <tr> <td>4,8 mm (Series 6 or Series 2 with Rc 1/4)</td> <td>7</td> </tr> <tr> <td>6,0 mm (Series 6 or Series 2 with Rc 1/4)</td> <td>8</td> </tr> </tbody> </table>	Orifice	Substitute	0,8 mm	0	1,2 mm	1	1,5 mm	2	2,0 mm	3	2,4 mm	4	3,0 mm	5	4,0 mm	6	4,8 mm (Series 6 or Series 2 with Rc 1/4)	7	6,0 mm (Series 6 or Series 2 with Rc 1/4)	8			
Port	Substitute																															
Rc 1/8	A																															
Rc 1/4	B																															
Manifold Mount (M8 x 1, Series 2), (M12 x 1, Series 6)	C																															
Orifice	Substitute																															
0,8 mm	0																															
1,2 mm	1																															
1,5 mm	2																															
2,0 mm	3																															
2,4 mm	4																															
3,0 mm	5																															
4,0 mm	6																															
4,8 mm (Series 6 or Series 2 with Rc 1/4)	7																															
6,0 mm (Series 6 or Series 2 with Rc 1/4)	8																															
<table border="1"> <thead> <tr> <th>Housing/Coil</th> <th>Substitute</th> </tr> </thead> <tbody> <tr> <td>Grommet/Dry Coil</td> <td>1</td> </tr> <tr> <td>Yoke/Top Spade (Series 2 only)</td> <td>3</td> </tr> <tr> <td>Grommet / Molded Coil (Series 6 only)</td> <td>4</td> </tr> <tr> <td>Yoke/with Bracket Top Spade (Series 2 only)</td> <td>7</td> </tr> <tr> <td>Slotted/1/4 Vertical Spade (Series 6 only)</td> <td>9</td> </tr> <tr> <td>Slotted/Molded Coil with Wire Leads (Series 2 only)</td> <td>9</td> </tr> </tbody> </table>	Housing/Coil	Substitute	Grommet/Dry Coil	1	Yoke/Top Spade (Series 2 only)	3	Grommet / Molded Coil (Series 6 only)	4	Yoke/with Bracket Top Spade (Series 2 only)	7	Slotted/1/4 Vertical Spade (Series 6 only)	9	Slotted/Molded Coil with Wire Leads (Series 2 only)	9	<table border="1"> <thead> <tr> <th>Function</th> <th>Substitute</th> </tr> </thead> <tbody> <tr> <td>2-Way Normally Closed</td> <td>1</td> </tr> <tr> <td>2-Way Normally Open</td> <td>2</td> </tr> <tr> <td>3-Way Normally Closed (free vent style for exhaust to atmosphere)</td> <td>3</td> </tr> <tr> <td>3-Way Normally Closed (line connect style with piping adapter)</td> <td>4</td> </tr> <tr> <td>3-Way Normally Open</td> <td>5</td> </tr> <tr> <td>3-Way Multi-Purpose (universal)</td> <td>6</td> </tr> </tbody> </table>	Function	Substitute	2-Way Normally Closed	1	2-Way Normally Open	2	3-Way Normally Closed (free vent style for exhaust to atmosphere)	3	3-Way Normally Closed (line connect style with piping adapter)	4	3-Way Normally Open	5	3-Way Multi-Purpose (universal)	6			
Housing/Coil	Substitute																															
Grommet/Dry Coil	1																															
Yoke/Top Spade (Series 2 only)	3																															
Grommet / Molded Coil (Series 6 only)	4																															
Yoke/with Bracket Top Spade (Series 2 only)	7																															
Slotted/1/4 Vertical Spade (Series 6 only)	9																															
Slotted/Molded Coil with Wire Leads (Series 2 only)	9																															
Function	Substitute																															
2-Way Normally Closed	1																															
2-Way Normally Open	2																															
3-Way Normally Closed (free vent style for exhaust to atmosphere)	3																															
3-Way Normally Closed (line connect style with piping adapter)	4																															
3-Way Normally Open	5																															
3-Way Multi-Purpose (universal)	6																															
<table border="1"> <thead> <tr> <th>Body Material</th> <th>Substitute</th> </tr> </thead> <tbody> <tr> <td>Stainless steel</td> <td>0</td> </tr> <tr> <td>Brass</td> <td>1</td> </tr> <tr> <td>Operator</td> <td>3</td> </tr> </tbody> </table>	Body Material	Substitute	Stainless steel	0	Brass	1	Operator	3																								
Body Material	Substitute																															
Stainless steel	0																															
Brass	1																															
Operator	3																															

* Adding low watt coil decreases pressure and flow rating of valve

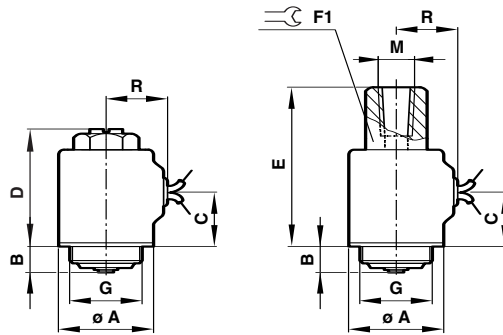


Basic Dimensions Standard Valve Grommet/Dry Coil (1)



Series	Ø A	B	C	D	E	F1	H	K	M	N	R	
2	Rc 1/8	25	7	38	59	69	15	32 - 1/2°	18,6	Rc1/8	M4 x 6,5 mm	16
	Rc 1/4	30	9	42	63	74	18	41°	23	Rc1/4	M4 x 6,5 mm	16
Series	Ø A	B	C	D	E	F1	H	K	M	N	R	
6	Rc 1/8	41	9	52	73	90	18	45°	31,4	Rc1/8	M5 x 8 mm	26
	Rc 1/4	41	9	52	73	90	18	45°	31,4	Rc1/4	M5 x 8 mm	26

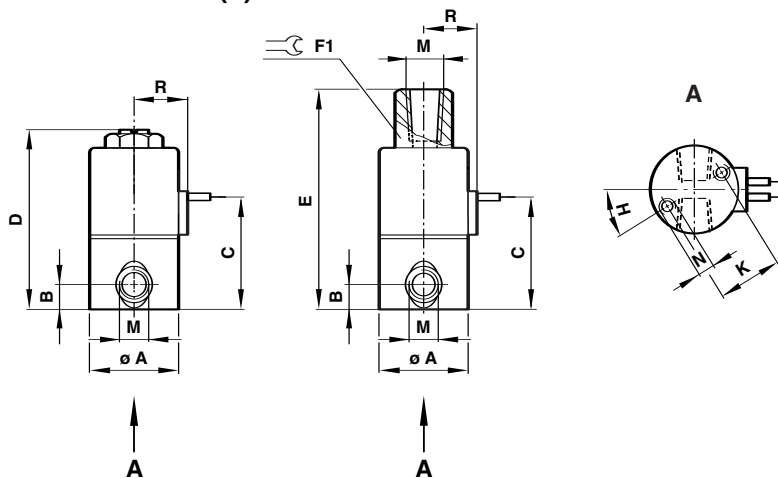
Operator Standard



Series	Ø A	B*	C	D	E	F1	G	M	R
2	26	-	18	39	47	15	3/4 - 32 UNEF	Rc1/8	16
Series	Ø A	-	C	D	E	F1	G	M	R
6	Rc 1/8	-	25	46	63	18	1 - 32 UN	Rc1/8	26
	Rc 1/4	-	25	46	63	18	1 - 32 UN	Rc1/4	26

* Consult Technical Center for Dimension B

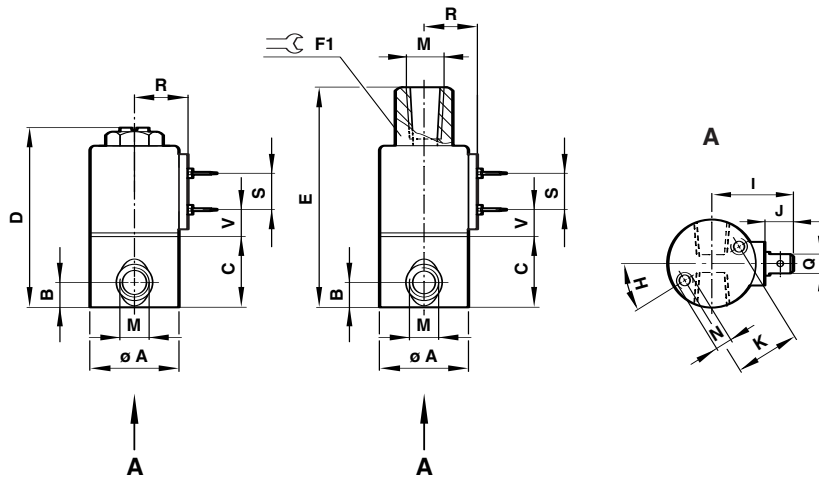
Slotted/Molded Coil with Wire Leads (9)



Series	Ø A	B	C	D	E	F1	H	K	N	M	R	
2	Rc 1/8	26	7	36	59	69	15	32 - 1/2°	18,6	M4 x 6,5 mm	Rc1/8	16
	Rc 1/4	30	9	39	62	74	18	41°	23	M4 x 6,5 mm	Rc1/4	16

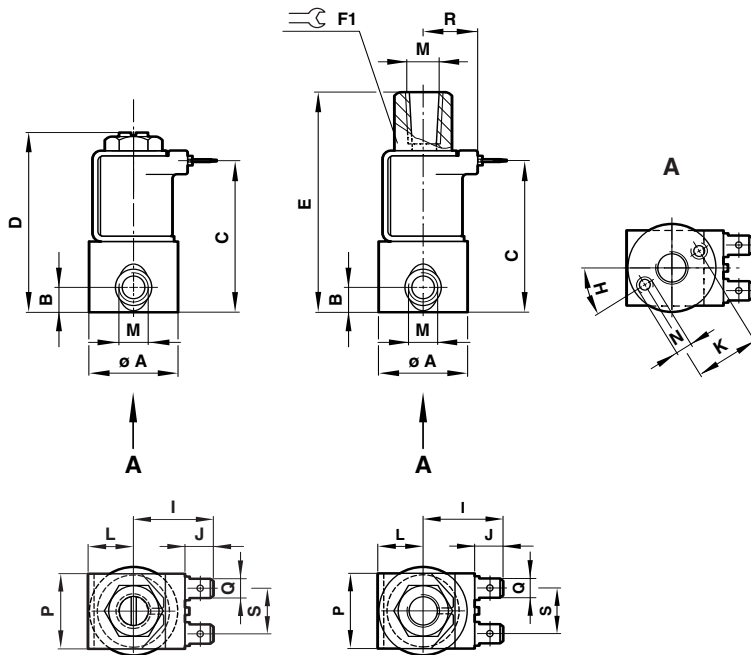


Slotted/1/4 Vertical Spade (9)



Series	Ø A	B	C	D	E	F1	H	I	J	K	M	N	Q	S	R	V	
6	Rc 1/8	41	9	27	73	90	18	45°	32	10	31	Rc1/8	M5 x 8 mm	6,0 x 0,8	13	22	9
	Rc 1/4	41	9	27	73	90	18	45°	32	10	31	Rc1/4	M5 x 8 mm	6,0 x 0,8	13	22	9

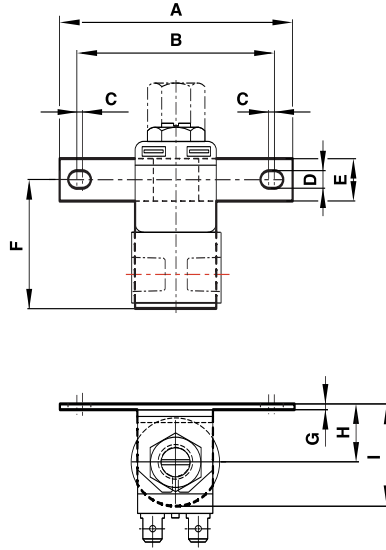
Yoke/Top Spade (3)



Series	Ø A	B	C	D	E	F1	H	I	K	L	M	N	P	Q	S	
2	Rc 1/8	25	7	37	59	69	15	32-1/2°	30	18,6	15,5	Rc1/8	M4 x 6,5 mm	25	6,0 x 8,1	15
	Rc 1/4	30	9	50	62	74	18	41°	30	23	15,5	Rc1/4	M4 x 6,5 mm	25	6,0 x 8,1	15

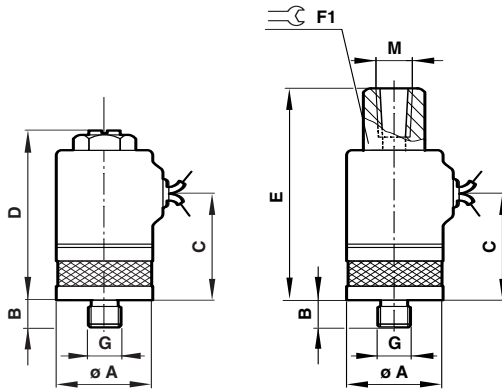


Yoke with Bracket/Top Spade (7)



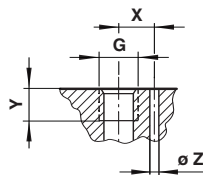
Series	A	B	C	D	E	F	G	H	I
2 Rc 1/8	79,2	64,5	8,26	7,1	15	36	3,9	15,5	28
Rc 1/4	79,2	64,5	8,26	7,1	15	39	3,9	15,5	28

Manifold Mount Valve



Series	Ø A	B	C	D	E	F1	G	M
2	25	6	32	53	62	15	M8x1	Rc1/8 or Rc1/4
Series	Ø A	B	C	D	E	F1	G	M
6	41	8	44	65	82	18	M12x1	Rc1/8 or Rc1/4

Manifold Mount Interface



Series	G	X	Y	Ø Z
2	M8x1	8	7	2
6	M12x1	13	8	7

Warning

These products are intended for use in industrial systems only. Do not use these products where pressures and temperatures can exceed those listed under 'Technical Data'. Before using these products with fluids other than those specified, for non-industrial applications, life-support systems, or other applications not within published specifications, consult NORGREN. Through misuse, age, or malfunction, components used in fluid power systems can fail in various modes.

The system designer is warned to consider the failure modes of all component parts used in fluid power systems and to provide adequate safeguards to prevent personal injury or damage to equipment in the event of such failure. System designers must provide a warning to end users in the system instructional manual if protection against a failure mode cannot be adequately provided. System designers and end users are cautioned to review specific warnings found in instruction sheets packed and shipped with these products where applicable.