

**2/2 Poppet Valves  
Pressure Actuated  
G<sup>1</sup>/<sub>2</sub>**

- Simple, rugged design and construction
- High flow
- Ideal for hydro-pneumatic locking circuits
- Pilot chamber isolated from main supply with a vent to atmosphere
- M/1328 model suitable for vacuum


**Technical Data**

Medium:

Compressed air, filtered, lubricated, non-lubricated or hydraulic fluid

Operation:

Poppet valve, directly actuated

Mounting:

Through holes in valve body

Port Size:

G<sup>1</sup>/<sub>2</sub>

Operating Pressure:

3 - 10 bar pneumatic or hydraulic M/1338

0 - 760 mm Hg M/1328

Flow (to CETOP RP50P):

'C' - Conductance dm<sup>3</sup>/s/bar 19,60

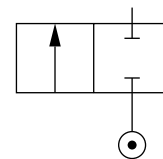
'b' - Critical pressure ratio 0,60

Cv 4,17

Operating Temperature:

-20°C\* to +80°C

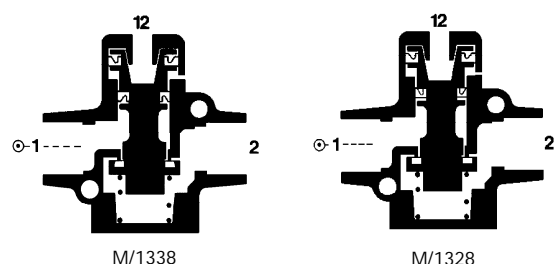
\*Consult our Technical Service for use below +2°C


**Materials**

Diecast aluminium alloy body, top cover and piston, nitrile rubber seats and seals.

**Ordering Information**

To order, quote model number from table overleaf, e.g. M/1338 for the normal mains pressure model.



M/1338

M/1328



### General Information

Model	Type	Operator	Return	Weight (kg)	Spares kit
M/1338	Normally closed	Pressure	Spring	0,42	QM/1328/00
M/1328	Normally closed	Vacuum	Spring	0,42	QM/1328/00

### Warning

These products are intended for use in industrial compressed air systems only. Do not use these products where pressures and temperatures can exceed those listed under 'Technical Data'.

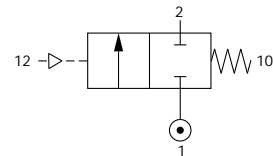
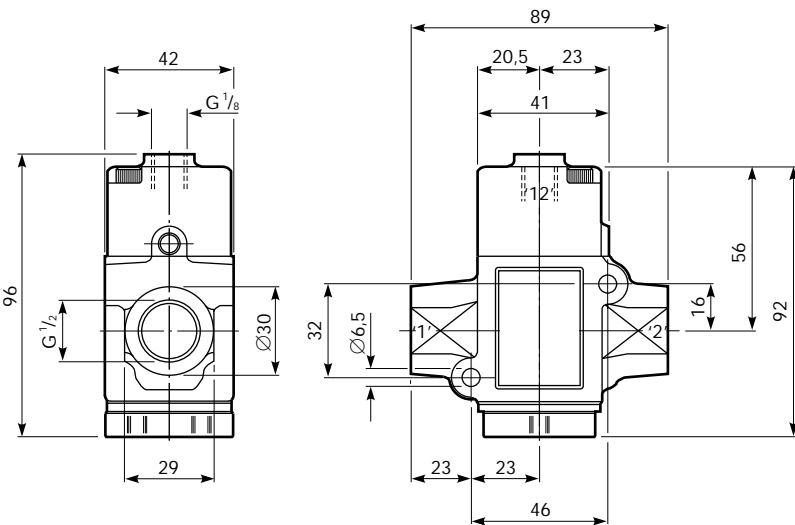
Before using these products with fluids other than those specified, for non-industrial applications, life-support systems, or other applications not within published specifications, consult NORGREN MARTONAIR.

Through misuse, age, or malfunction, components used in fluid power systems can fail in various modes. The system designer is warned to consider the failure modes of all component parts used in fluid power systems and to provide adequate safeguards to prevent personal injury or damage to equipment in the event of such failure.

**System designers must provide a warning to end users in the system instructional manual if protection against a failure mode cannot be adequately provided.**

System designers and end users are cautioned to review specific warnings found in instruction sheets packed and shipped with these products.

### Pressure Actuated, Spring Return

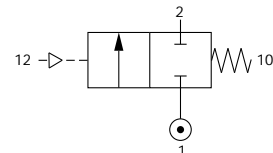


Model Number: **M/1338**

Type: 2/2 suitable for normal mains pressure

Pilot Pressure: 1,3 + (0,5 x supply pressure) bar

**Note:** When used with hydraulic supplies the port connections should be reversed.



Model Number: **M/1328**

Type: 2/2 suitable for vacuum

Pilot Pressure: 1400 – (0,55 x vacuum mm Hg) bar