

**2/2 Poppet Valves
Pressure Actuated
G³/₄**

- Simple, rugged design and construction
- High flow
- Ideal for hydro-pneumatic locking circuits
- Pilot chamber isolated from main supply with a vent to atmosphere
- M/728 model suitable for vacuum


Technical Data
Medium:

Compressed air, filtered, lubricated, non-lubricated or hydraulic fluid

Operation:

Poppet valve, directly actuated

Mounting:

Through holes in valve body

Port Size:

G³/₄

Operating Pressure:

0 - 10 bar pneumatic or hydraulic M/738

0 - 760 mm Hg M/728

Flow (to CETOP RP50P):

'C' - Conductance dm³/s/bar 26,07

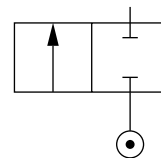
'b' - Critical pressure ratio 0,325

Cv 6,11

Operating Temperature:

-20°C* to +80°C

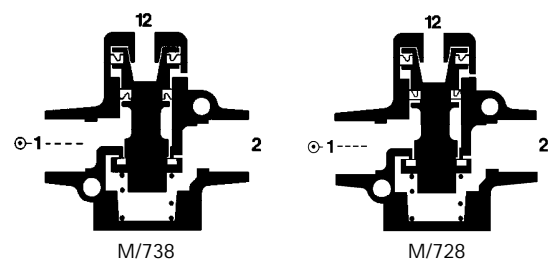
*Consult our Technical Service for use below +2°C


Materials

Diecast aluminium alloy body, top cover and piston, nitrile rubber seats and seals.

Ordering Information

To order, quote model number from table overleaf, e.g. M/738 for the normal mains pressure model.





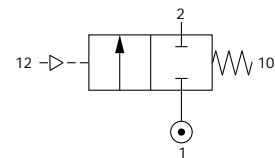
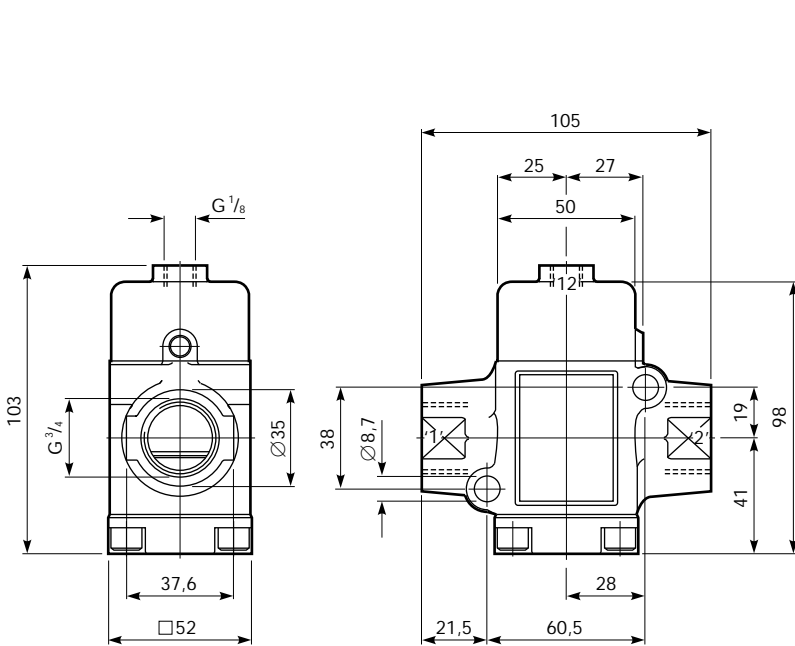
General Information

Model	Type	Operator	Return	Weight (kg)	Spares kit
M/738	Normally closed	Pressure	Spring	0,72	QM/728/00
M/728	Normally closed	Vacuum	Spring	0,72	QM/728/00

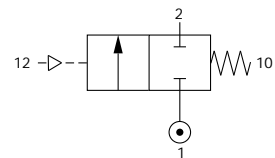
Warning

These products are intended for use in industrial compressed air systems only. Do not use these products where pressures and temperatures can exceed those listed under 'Technical Data'. Before using these products with fluids other than those specified, for non-industrial applications, life-support systems, or other applications not within published specifications, consult NORGREN MARTONAIR. Through misuse, age, or malfunction, components used in fluid power systems can fail in various modes. The system designer is warned to consider the failure modes of all component parts used in fluid power systems and to provide adequate safeguards to prevent personal injury or damage to equipment in the event of such failure. **System designers must provide a warning to end users in the system instructional manual if protection against a failure mode cannot be adequately provided.** System designers and end users are cautioned to review specific warnings found in instruction sheets packed and shipped with these products.

Pressure Actuated, Spring Return



Model Number: **M/738**
 Type: 2/2 suitable for normal mains pressure
 Pilot Pressure: 2 + (0,5 x supply pressure) bar
Note: When used with hydraulic supplies the port connections should be reversed.



Model Number: **M/728**
 Type: 2/2 suitable for vacuum
 Pilot Pressure: 2,0 -(0,5 x vacuum bar)