

- Low pilot pressure bleed operation
- Suitable for pressure decay systems
- Can be used with Cascade circuits as a constant mains air supply is not required
- Fast switching with both rising or falling pilot pressure


**3/2 Piston Valves
Pressure Actuated
G^{1/8}**

Technical Data
Medium:

Compressed air, filtered, lubricated and non-lubricated

Operation:

Piston valve, bleed actuated, normally open

Mounting:

Through-holes in valve body

Port Size:

G^{1/8}

Operating Pressure:

3 - 10 bar

Flow (to CETOP RP50P):

'C' - Conductance dm³/s/bar 0,70

'b' - Critical pressure ratio 0,41

Cv 0,18

Operating Temperature:

-20°C* to +80°C

*Consult our Technical Service for use below +2°C

Materials

Brass body, zinc alloy top cover, polyurethane diaphragm, nitrile rubber seals.

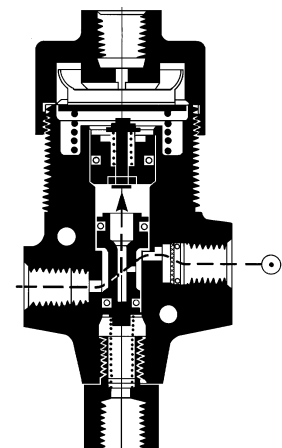
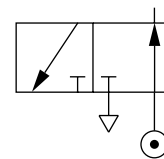
Ordering Information

To order quote model number S/2509/102.

Alternative Models

Other operator types for the S/2509 valve are also available:

Section 5.7. - Manually operated model (S/509)





General Information

Model	Type	Operator	Return	Weight (kg)	Spares kit
S/2509/102	Normally open	Pressure, bleed	Air	0,26	QS/509/102/00

Warning

These products are intended for use in industrial compressed air systems only. Do not use these products where *pressures* and *temperatures* can exceed those listed under 'Technical Data'.

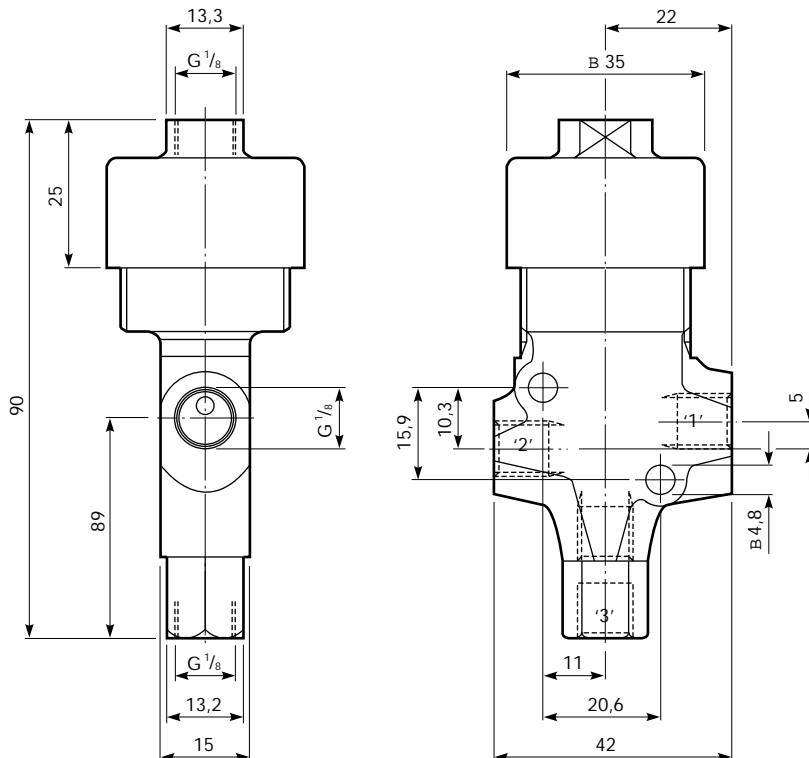
Before using these products with fluids other than those specified, for non-industrial applications, life-support systems, or other applications not within published specifications, consult NORGREN MARTONAIR.

Through misuse, age, or malfunction, components used in fluid power systems can fail in various modes. The system designer is warned to consider the failure modes of all component parts used in fluid power systems and to provide adequate safeguards to prevent personal injury or damage to equipment in the event of such failure.

System designers must provide a warning to end users in the system instructional manual if protection against a failure mode cannot be adequately provided.

System designers and end users are cautioned to review specific warnings found in instruction sheets packed and shipped with these products.

Bleed Operated Low Pressure Pilot Actuated, Air Return



Model Number: **S/2509/102**

Type: 3/2 Normally open

Pilot Pressure: 0,5 - 7 bar

This valve may be used with intermittent supplies but the mains inlet, however, must always be connected to port '1'.

Valve should be mounted with the axis of the piston horizontal.