

- Eliminates unwanted signals
- Cannot duplicate a signal
- Simple, reliable operation



**3/2 Piston Valve
Pressure Actuated
G¹/₈**



Technical Data

Medium:
Compressed air, filtered, lubricated and non-lubricated

Operation:
Piston valve, directly actuated

Mounting:
Through-holes in lugs on valve body

Port Size:
G¹/₈

Operating Pressure:
2 - 10 bar

Signal Output Pressure:
90% input pressure

Impulse Duration:
0,2 - 0,4 ms

Operating Temperature:
-20°C* to +80°C

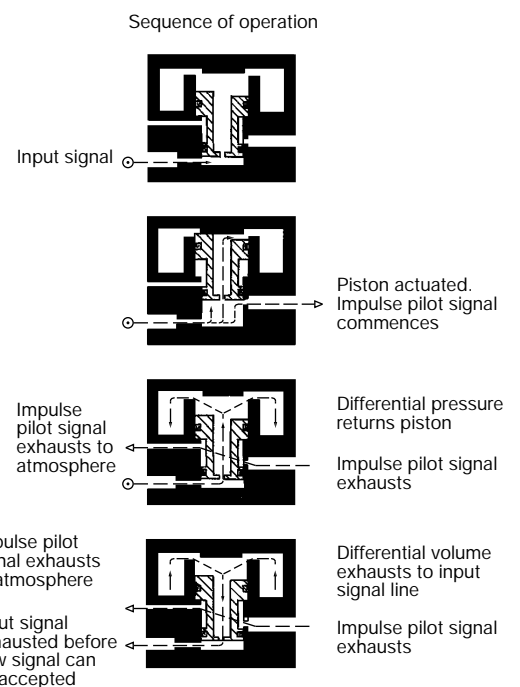
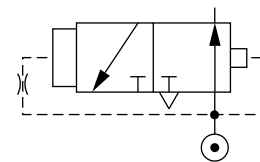
*Consult our Technical Service for use below +2°C

Materials

Zinc alloy body and top cover, brass piston, nitrile rubber seals.

Ordering Information

To order, quote model number 04 0431 02 000.





General Information

Model	Operator	Return	Weight (kg)	Spares kit
04 0431 02 000	Pressure	Air	0,46	Not available

Warning

These products are intended for use in industrial compressed air systems only. Do not use these products where *pressures* and *temperatures* can exceed those listed under **'Technical Data'**.

Before using these products with fluids other than those specified, for non-industrial applications, life-support systems, or other applications not within published specifications, consult NORGREN MARTONAIR.

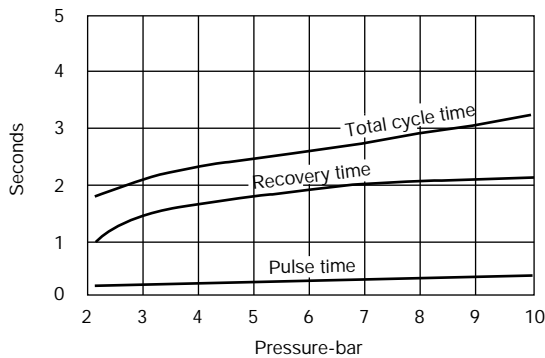
Through misuse, age, or malfunction, components used in fluid power systems can fail in various modes. The system designer is warned to consider the failure modes of all component parts used in fluid power systems and to provide adequate safeguards to prevent personal injury or damage to equipment in the event of such failure.

System designers must provide a warning to end users in the system instructional manual if protection against a failure mode cannot be adequately provided.

System designers and end users are cautioned to review specific warnings found in instruction sheets packed and shipped with these products.

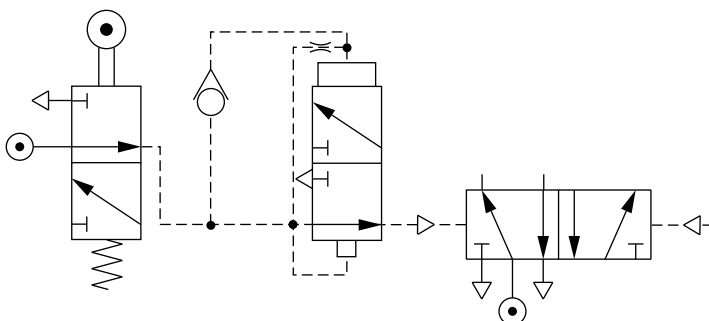
Typical Performance Characteristics

Performance (basic unit)



Important: Under no circumstances should the bleed orifice in the piston be modified in an attempt to obtain a different impulse duration. To obtain a longer duration, connect a separate air reservoir to the port in the top of the unit. To reduce the reset time, fit a non-return valve into the circuit as shown below. For any working conditions outside those quoted, consult our Technical Service.

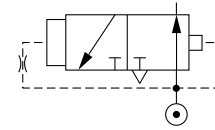
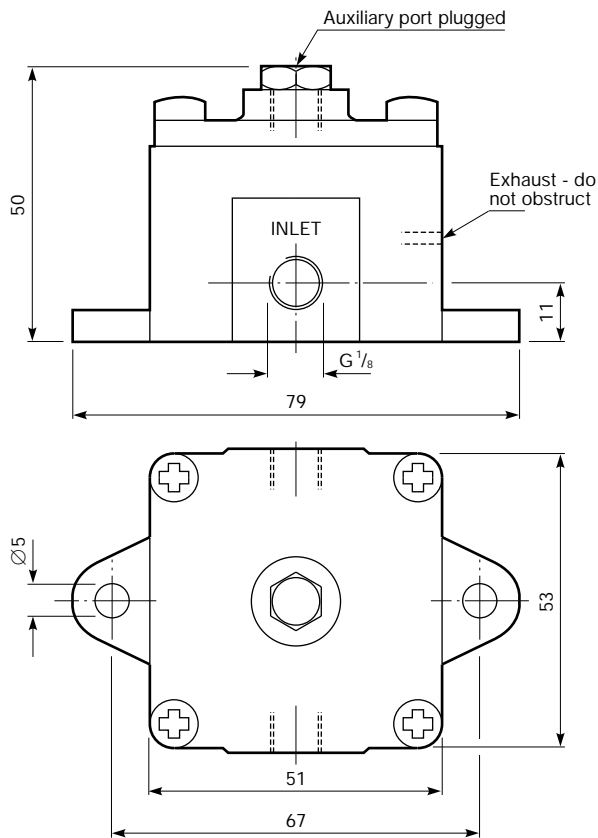
Improved reset time circuit



To reduce the reset or recovery time of the generator, a non-return valve can be fitted in the circuit as shown.



Impulse Generator



Model Number: **04 0431 02 000**
 Type: 3/2

The Impulse Generator is fitted between a trip valve and directional control valve when it is necessary to eliminate a trapped or locked pilot signal which would otherwise prevent the control valve from resetting. When an input signal is applied, it generates a short duration output signal which is then automatically exhausted. A further output signal cannot be generated until the input signal has been removed.

The downstream volume should not exceed 0,033 dm which is equivalent to approximately 6,67 metres of Enots 4 mm o.d. nylon tube.