

- Compact, attractive styling
- High flow
- Steel reinforced spool seals
- In-line ports



**3/2 Spool Valve
Pressure Actuated
G $\frac{1}{2}$**



Technical Data

Medium:

Compressed air, filtered, lubricated and non-lubricated

Operation:

Spool valve, directly actuated

Mounting:

Through holes in valve body

Port Size:

G $\frac{1}{2}$

Operating Pressure:

1 - 10 bar

0 - 930 mbar vacuum

Flow (to CETOP RP50P):

'C' - Conductance dm³/s/bar 13,38

'b' - Critical pressure ratio 0,66

Cv 4,33

Operating Temperature:

-20°C* to +80°C

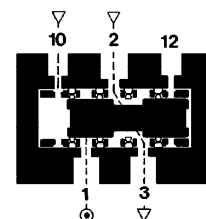
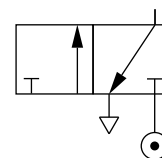
*Consult our Technical Service for use below +2°C

Alternative Models

Other operator types for the M/20134 range of valves are also available:

Section 5.4. - Solenoid actuated models

Section 5.7. - Manually operated models



Materials

Aluminium valve body and spool, nitrile rubber seals

Ordering Information

To order, quote model number from table overleaf, e.g. M/20134/3 for the Pressure Set-reset model.



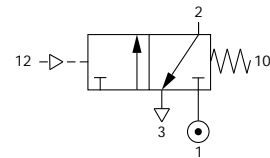
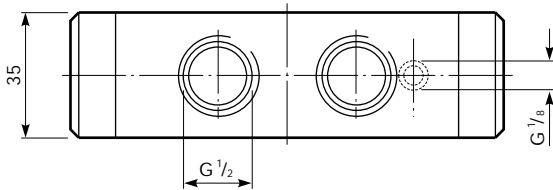
General Information

Model	Type	Operator	Return	Weight (kg)	Spares kit
M/20134/40	Normally closed	Pressure	Spring	0,68	QM/20152/00
M/20134/3	Normally closed	Pressure	Pressure	0,68	QM/20152/00

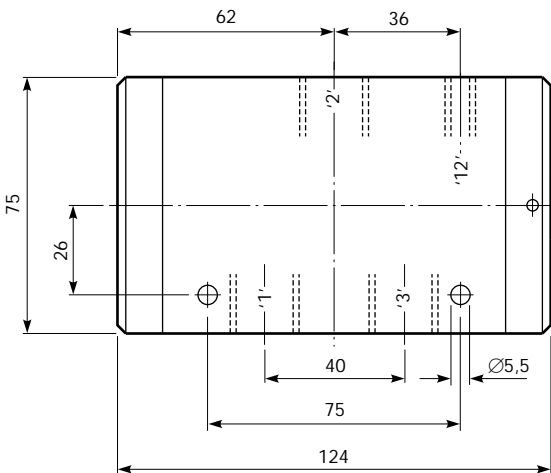
Warning

These products are intended for use in industrial compressed air systems only. Do not use these products where pressures and temperatures can exceed those listed under 'Technical Data'. Before using these products with fluids other than those specified, for non-industrial applications, life-support systems, or other applications not within published specifications, consult NORGREN MARTONAIR. Through misuse, age, or malfunction, components used in fluid power systems can fail in various modes. The system designer is warned to consider the failure modes of all component parts used in fluid power systems and to provide adequate safeguards to prevent personal injury or damage to equipment in the event of such failure. **System designers must provide a warning to end users in the system instructional manual if protection against a failure mode cannot be adequately provided.** System designers and end users are cautioned to review specific warnings found in instruction sheets packed and shipped with these products.

Pressure Actuated, Spring Return

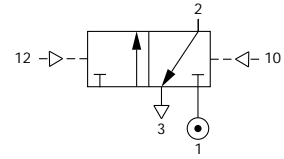
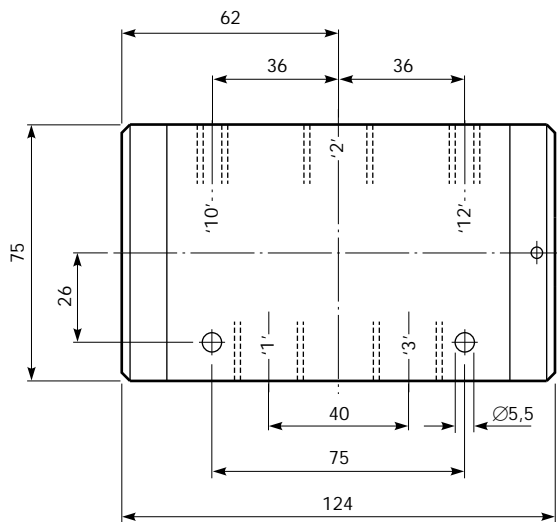
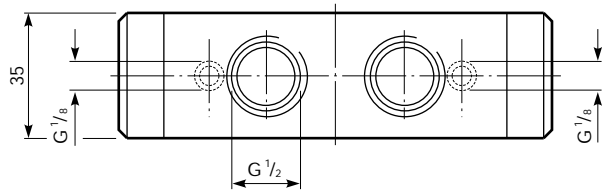


Model Number: **M/20134/40**
 Type: 3/2 Normally closed
 Pilot Pressure: 1,8 + (0,1 x supply pressure) bar





Pressure Set-reset



Model Number: **M/20134/3**

Type: 3/2 Normally closed

Pilot Pressure: 1,5 + (0,1 x supply pressure)
bar

Valve should be mounted with the axis of the
spool horizontal