



- Compact, integral flow regulator and silencer units
- Captive regulating needle will not blow out when unscrewed
- Reduced dimensions



Technical Data

Medium:

Compressed air, filtered, lubricated and non-lubricated

Mounting:

Directly in the exhaust port

Port Size:

Combined Flow Regulator/Silencer- Male Thread (BSPT)

R^{1/8} 04057100

R^{1/4} 04057200

R^{3/8} 04057300

R^{1/2} 04057400

Flow Regulator module only- Male Thread (BSPT)

R^{1/8} 04058100

R^{1/4} 04058200

R^{3/8} 04058300

R^{1/2} 04058400

Silencer module only- Female Thread (BSPP)

G^{1/4} 04059200

G^{1/2} 04059400

Operating Pressure:
0 - 10 bar

Operating Temperature:
0°C to +80°C

Consult our Technical Service for use below +2°C

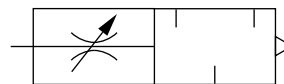
Materials:

Brass body and nut, plastic needle, sintered bronze silencer

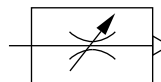
Ordering information

To order quote model number from table overleaf, e.g. 04 0574 00 for the silencer/regulator 1/2" BSP model.

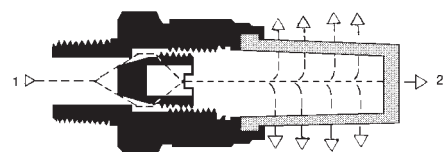
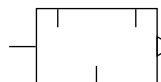
Flow Regulator/Silencer



Regulator



Silencer



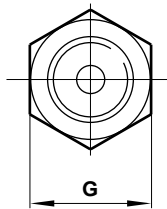
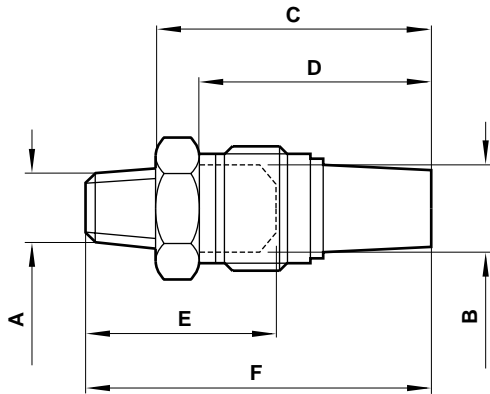


General Information

Model	Type	Thread BSP taper	Max. turns	Maximum flow factor		Critical Pressure Ratio (b)	Weight (kg)	Replacement Modules	
				*C	**Cv			Regulator	Silencer
04 0571 00	Flow Regulator/Silencer	R 1/8	6	1,78	0,44	0,5	0,03	04058100	04059200
04 0572 00	Flow Regulator/Silencer	R 1/4	6	1,78	0,44	0,5	0,04	04058200	04059200
04 0573 00	Flow Regulator/Silencer	R 3/8	10	8,95	2,2	0,5	0,10	04058300	04059400
04 0574 00	Flow Regulator/Silencer	R 1/2	10	8,95	2,2	0,5	0,12	04058400	04059400

*C :measured in dm³/(s.bar) **Cv :measured in US gal/min

Flow Regulator/Silencer



Model	A	B	C	D**	E*	F	G
04 0571 00	1/8	1/4	35,0	27,5	26,0	44,5	15
04 0572 00	1/4	1/4	35,5	27,5	27,5	46,0	15
04 0573 00	3/8	1/2	55,0	45,5	34,5	67,5	24
04 0574 00	1/2	1/2	53,5	45,5	36,5	69,5	24

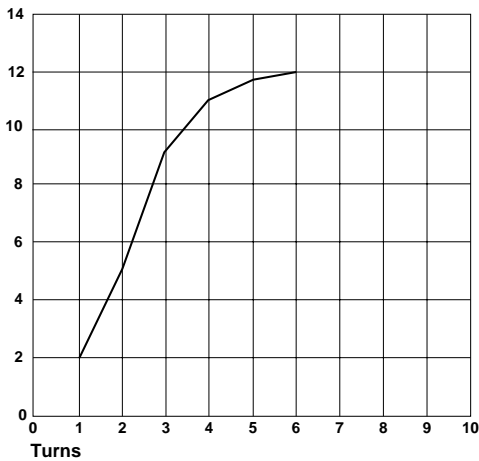
A - According to ISO - 7/1
 B - According to ISO - 228/1
 * Regular body
 ** Silencer body

Performance Characteristics

0405 7100, 0405 7200 Flowrate

Flow versus turns at 6 bar inlet pressure

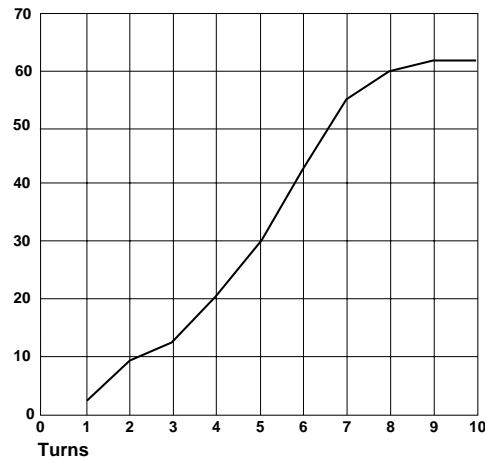
Flow measured in dm³/s (ANR)



0405 7300, 0405 7400 Flowrate

Flow versus turns at 6 bar inlet pressure

Flow measured in dm³/s (ANR)



Warning

These products are intended for use in industrial compressed air systems only. Do not use these products where pressures and temperatures can exceed those listed under 'Technical Data'.

Before using these products with fluids other than those specified, for non-industrial applications, life-support systems, or other applications not within published specifications, consult Norgren.

Through misuse, age, or malfunction, components used in fluid power systems can fail in various modes. The system designer is warned to consider the failure modes of all component parts used in fluid power systems and to provide adequate safeguards to prevent personal injury or damage to equipment in the event of such failure.

System designers must provide a warning to end users in the system instructional manual if protection against a failure mode cannot be adequately provided.

System designers and end users are cautioned to review specific warnings found in instruction sheets packed and shipped with these products where applicable.