

95100, 2/2 (stainless steel) Direct solenoid actuated poppet valves

- Port size: G1/8, G1/4, 1/4 NPT
- Working from 0 bar up
- Assembled free of oil and grease
- Suited for fine vacuum down to $1,33 \cdot 10^{-2}$ mbar
- For a.c. solenoid systems with integrated rectifier (40 ... 60 Hz)
- All valves are available with Ex-protected coils, certified according to ATEX, IECEx, or other international standards



Technical features

<p>Medium: For aggressive, gaseous and liquid fluids (with contaminated fluids, upstream installation of a dirt trap is recommended.)</p> <p>Operation: Direct solenoid operated poppet valves</p> <p>Operating pressure: 0 ... 50 bar (0 ... 725 psi)</p>	<p>Orifice: 2 ... 6 mm</p> <p>Port size: G 1/8, G 1/4, 1/4 NPT</p> <p>Mounting position: Optional, preferably with solenoid on top</p> <p>Ambient temperature: NBR: -25° ... +80°C Depending on solenoid system</p>	<p>Fluid temperature: FPM: -10°... +120°C (+14 ... +248°F) Water +95°C (+203°F) EPDM: -40°... +140°C (-40 ... +284°F) PTFE: -50°... +180°C (-58 ... +356°F) FFPM: -10°... +180°C (+14 ... +356°F)</p> <p>Depending on seal materials Air supply must be dry enough to avoid ice formation at temperatures below +2°C (+35°F).</p>	<p>Materials: Housing: Stainless steel 1.4404 (316 L) Seals: FPM, other see option selector Inner parts: stainless steel</p>
---	---	--	---

Technical data - Switching function: Normally closed

Symbol	Port size	Orifice (mm)	Operating pressure (bar)		kv factor (m ³ /h) *3)	Weight without Solenoid (kg)	Dimension No.	Solenoid group *2)	Model *1)
			min.	max.					
	G1/8	2	0	50	0,1	0,15	1	13D	9510202
	G1/8	2	0	20	0,1	0,15	1	13B	9510202
	G1/4	4	0	12	0,34	0,21	2	16D	9511402
	1/4 NPT	4	0	12	0,34	0,21	2	16D	9514402
	G1/4	4	0	5	0,34	0,21	2	16C	9511402
	1/4 NPT	4	0	5	0,34	0,21	2	16C	9514402
	G1/4	6	0	5	0,52	0,21	2	16D	9511602
	1/4 NPT	6	0	5	0,52	0,21	2	16D	9514602
	G1/4	6	0	3	0,52	0,21	2	16C	9511602
	1/4 NPT	6	0	3	0,52	0,21	2	16C	9514602

*1) When ordering please indicate solenoid, voltage and current type (frequency).
 *2) Technical data and ordering information see following pages.
 *3) Cv (US) ~ kv x 1,2

Option selector

951X★X★.★ ★ ★ ★.★ ★ ★ ★.★ ★ ★ ★

<table border="1"> <tr><th>Orifice</th><th>Substitute</th></tr> <tr><td>2</td><td>2</td></tr> <tr><td>4</td><td>4</td></tr> <tr><td>6</td><td>6</td></tr> <tr><th>Material seat seal</th><th>Substitute</th></tr> <tr><td>EPDM</td><td>1</td></tr> <tr><td>FPM</td><td>2</td></tr> <tr><td>PTFE</td><td>3</td></tr> <tr><td>FFPM</td><td>4</td></tr> </table>	Orifice	Substitute	2	2	4	4	6	6	Material seat seal	Substitute	EPDM	1	FPM	2	PTFE	3	FFPM	4	<table border="1"> <tr><th>Frequency (Hz)</th><th>Substitute</th></tr> <tr><td>At d.c.</td><td>00</td></tr> <tr><td>At a.c. (40 ... 60 Hz)</td><td>50</td></tr> <tr><th>Voltage</th><th>Substitute</th></tr> <tr><td>24 V d.c.</td><td>024</td></tr> <tr><td>230 V a.c.</td><td>230</td></tr> <tr><th>Solenoid operators</th><th>Substitute</th></tr> <tr><td>See table</td><td></td></tr> </table>	Frequency (Hz)	Substitute	At d.c.	00	At a.c. (40 ... 60 Hz)	50	Voltage	Substitute	24 V d.c.	024	230 V a.c.	230	Solenoid operators	Substitute	See table	
Orifice	Substitute																																		
2	2																																		
4	4																																		
6	6																																		
Material seat seal	Substitute																																		
EPDM	1																																		
FPM	2																																		
PTFE	3																																		
FFPM	4																																		
Frequency (Hz)	Substitute																																		
At d.c.	00																																		
At a.c. (40 ... 60 Hz)	50																																		
Voltage	Substitute																																		
24 V d.c.	024																																		
230 V a.c.	230																																		
Solenoid operators	Substitute																																		
See table																																			

Solenoids group 13B, standard voltages

	Power consumption		Rated current		Protection class IP/NEMA	Ex-Protection (ATEX-Category)	Temperature Ambient/Media (°C)	Electrical connection	Drawing No.	Circuit diagram No.	Model
	24 V d.c. (W)	230 V a.c. (VA)	24 V d.c. (mA)	230 V a.c. (mA)							
	8,0	—	331	—	IP65 (with connector)	—	-25 ... +60 Media: +80 max	Connector DIN EN 175301-803, form A *1)	1	1	0246
	—	9,2	—	40	IP65 (with connector)	—	-25 ... +60 Media: +80 max	Connector DIN EN 175301-803, form A *1)	2	7	3206
	8,0	—	331	—	IP65 (with connector)	II 3G Ex ec IIC T4 Gc II 3D Ex tc IIIB T110°C Dc	-20 ... +60	Special connector DIN EN 175301-803 Form A	1	1	3216
	—	9,2	—	40	IP65 (with connector)	II 3G Ex ec IIC T4 Gc II 3D Ex tc IIIB T120°C Dc	-20 ... +60	Special connector DIN EN 175301-803 Form A	2	6	3218
	6,9	—	289	—	IP66	II 2G Ex mb IIC T4 Gb II 2D Ex mb IIIC T110°C Db	-20 ... +60	Cable length 3 m	5	4	0292
	—	8,7	—	34	IP66	II 2G Ex mb IIC T4 Gb II 2D Ex mb IIIC T110°C Db	-20 ... +60	Cable length 3 m	5	7	0293
	3,9	—	162	—	IP66 (with cable gland)	II 2G Ex eb mb IIC T4/ T6 Gb II 2D Ex tb IIIC T130°C Db	T4: -40 ...+80 T6: -40 ... +55 -40 ...+80	M20 x 1,5 *1)	6	4	4210
	—	5,3	—	23	IP66 (with cable gland)	II 2G Ex eb mb IIC T4/ T6 Gb II 2D Ex tb IIIC T130°C Db	T4: -40 ...+80 T6: -40 ... +55 -40 ...+80	M20 x 1,5 *1)	6	7	4211
	3,9	—	162	—	IP66 (with cable gland)	II 2G Ex db mb IIC T4/ T6 Gb II 2G Ex eb mb IIC T4/ T6 Gb II 2D Ex tb IIIC T130°C Db	T4: -40 ...+80 T6: -40 ... +55 -40 ...+80	1/2 NPT *1)	7	20	4610
	—	5,3	—	23	IP66 (with cable gland)	II 2G Ex db mb IIC T4/ T6 Gb II 2G Ex eb mb IIC T4/ T6 Gb II 2D Ex tb IIIC T130°C Db	T4: -40 ...+80 T6: -40 ... +55 -40 ...+80	1/2 NPT *1)	7	21	4611
	3,9	—	162	—	IP66 (with cable gland)	II 2G Ex db mb IIC T4/ T6 Gb II 2G Ex eb mb IIC T4/ T6 Gb II 2D Ex tb IIIC T130°C Db	T4: -40 ...+80 T6: -40 ... +55 -40 ...+80	M20 x 1,5 *1)	7	20	4612
	—	5,3	—	23	IP66 (with cable gland)	II 2G Ex db mb IIC T4/ T6 Gb II 2G Ex eb mb IIC T4/ T6 Gb II 2D Ex tb IIIC T130°C Db	T4: -40 ...+80 T6: -40 ... +55 -40 ...+80	M20 x 1,5 *1)	7	21	4613
	5,5	—	228	—	4x	Cl. I, Div. 1, Gr. A - D Cl. II/III, Div. 1, Gr. E - G T3C (160°C)	-20 ... +60	Flying leads length 460 mm	8	1	3722
	—	5,9	—	26	4x	Cl. I, Div. 1, Gr. A - D Cl. II/III, Div. 1, Gr. E - G T3C (160°C)	-20 ... +60	Flying leads length 460 mm	8	5	3723

Standard voltages (±10%) 24 V d.c., 230 V a.c., other voltages on request. Design according to VDE 0580, EN 50014/50028. 100% duty cycle.

*1) Connector/cable gland is not scope of delivery, see table »Accessories«

Attention: The protection class for coil series 46xx and 48xx is determined by the choice of cable gland.





Example: if an ATEX-certified cable gland is used that has Ex d type of protection, the solenoid will have the protection class Ex db mb; if a cable gland with Ex e type of protection is used, the solenoid will have protection class Ex eb mb.

Approvals

Model	Approvals ATEX	IECEX	FM	Datasheet
029x	KEMA 02 ATEX 1347 X	IECEX DEK 13.0014X	—	N/en 7.1505
321x, 381x	EC-Declaration of Conformity	—	—	N/en 7.1570
372x, 382x	—	—	CSA-LR 57643-6	N/en 7.1575

Model	Approvals ATEX	IECEX	Datasheet
42xx	KEMA 98 ATEX 4452 X	IECEX KEM 09.0068X	N/en 7.1580
46xx	PTB 02 ATEX 2085 X	IECEX PTB 11.0094X	N/en 7.1585

Solenoids group 13D, standard voltages

	Power consumption		Rated current		Protection class IP/NEMA	Ex-Protection (ATEX-Category)	Temperature Ambient/Media (°C)	Electrical connection	Drawing No.	Circuit diagram No.	Model
	24 V d.c. (W)	230 V a.c. (VA)	24 V d.c. (mA)	230 V a.c. (mA)							
	16,9	—	703	—	IP65 (with connector)	—	-25 ... +60 Media: +80 max	Connector DIN EN 175301-803, form A *1)	3	1	0700
	—	19,5	—	75	IP65 (with connector)	—	-25 ... +60 Media: +80 max	Connector DIN EN 175301-803, form A *1)	4	6	3703
	11,4	—	475	—	IP66 (with cable gland)	II 2G Ex eb mb IIC T4/T5 Gb II 2D Ex tb IIIC T130°C Db	T4: -40 ... +50 T5: -40 ... +40 -40 ... +50	M20 x 1,5 *1)	6	4	4230
	—	15,2	—	66	IP66 (with cable gland)	II 2G Ex eb mb IIC T4/T5 Gb II 2D Ex tb IIIC T130°C Db	T4: -40 ... +50 T5: -40 ... +40 -40 ... +50	M20 x 1,5 *1)	6	7	4231
	11,4	—	475	—	IP66 (with cable gland)	II 2G Ex db mb IIC T4/T6 Gb II 2G Ex eb mb IIC T4/T6 Gb II 2D Ex tb IIIC T130°C Db	T4: -40 ... +50 T5: -40 ... +40 -40 ... +50	1/2 NPT *1)	7	20	4630
	—	15,2	—	66	IP66 (with cable gland)	II 2G Ex db mb IIC T4/T6 Gb II 2G Ex eb mb IIC T4/T6 Gb II 2D Ex tb IIIC T130°C Db	T4: -40 ... +50 T5: -40 ... +40 -40 ... +50	1/2 NPT *1)	7	21	4631
	11,4	—	475	—	IP66 (with cable gland)	II 2G Ex db mb IIC T4/T6 Gb II 2G Ex eb mb IIC T4/T6 Gb II 2D Ex tb IIIC T130°C Db	T4: -40 ... +50 T5: -40 ... +40 -40 ... +50	M20 x 1,5 *1)	7	20	4632
	—	15,2	—	66	IP66 (with cable gland)	II 2G Ex db mb IIC T4/T6 Gb II 2G Ex eb mb IIC T4/T6 Gb II 2D Ex tb IIIC T130°C Db	T4: -40 ... +50 T5: -40 ... +40 -40 ... +50	M20 x 1,5 *1)	7	21	4633
	13,6	—	567	—	4x	Cl I, Div. 1, Gr. A - D Cl II/III, Div. 1, Gr. E - G T3C (160°C)	-20 ... +60	Flying leads length 460 mm	8	1	3726
	—	15,7	—	68	4x	Cl I, Div. 1, Gr. A - D Cl II/III, Div. 1, Gr. E - G T3C (160°C)	-20 ... +60	Flying leads length 460 mm	8	5	3727

Standard voltages ($\pm 10\%$) 24 V d.c., 230 V a.c., other voltages on request. Design according to VDE 0580, EN 50014/50028. 100% duty cycle.

*1) Connector/cable gland is not scope of delivery, see table »Accessories«





Attention: The protection class for coil series 46xx and 48xx is determined by the choice of cable gland.

Example: if an ATEX-certified cable gland is used that has Ex d type of protection, the solenoid will have the protection class Ex db mb; if a cable gland with Ex e type of protection is used, the solenoid will have protection class Ex eb mb.

Approvals

Model	Approvals ATEX	IECEx	FM	Datasheet
321x, 381x	EC-Declaration of Conformity	—	—	N/en 71.570
372x, 382x	—	—	CSA-LR 57643-6	N/en 71.575
42xx	KEMA 98 ATEX 4452 X	IECEx KEM 09.0068X	—	N/en 71.580
46xx	PTB 02 ATEX 2085 X	IECEx PTB 11.0094X	—	N/en 71.585

Solenoids group 16C, standard voltages

	Power consumption		Rated current		Protection class IP/NEMA	Ex-Protection (ATEX-Category)	Temperature Ambient/Media (°C)	Electrical connection	Drawing No.	Circuit diagram No.	Model
	24 V d.c. (W)	230 V a.c. (VA)	24 V d.c. (mA)	230 V a.c. (mA)							
	6,8	—	284	—	IP65 (with connector)	—	-25 ... +60	Connector DIN EN 175301-803, form A *1)	2	1	0827
	—	10,6	—	46	IP65 (with connector)	—	-25 ... +60	Connector DIN EN 175301-803, form A *1)	3	6	3805
	8,9	—	369	—	IP66 (with cable gland)	II 2G Ex eb mb IIC T4/ T5 Gb	T4: -40 ... +65 T5: -40 ... +55 -40 ... +65	M20 x 1,5 *1)	6	4	4270
	—	10,0	—	43	IP66 (with cable gland)	II 2D Ex tb IIIC T130°C Db II 2G Ex eb mb IIC T4/ T5 Gb	T4: -40 ... +65 T5: -40 ... +55 -40 ... +65	M20 x 1,5 *1)	6	7	4271
	8,9	—	369	—	IP66 (with cable gland)	II 2G Ex db mb IIC T4/ T6 Gb II 2G Ex eb mb IIC T4/ T6 Gb II 2D Ex tb IIIC T130°C Db	T4: -40 ... +70 T6: -40 ... +40 -40 ... +70	1/2 NPT *1)	7	20	4670
	—	10,0	—	43	IP66 (with cable gland)	II 2G Ex db mb IIC T4/ T6 Gb II 2G Ex eb mb IIC T4/ T6 Gb II 2D Ex tb IIIC T130°C Db	T4: -40 ... +70 T6: -40 ... +40 -40 ... +70	1/2 NPT *1)	7	21	4671
	8,9	—	369	—	IP66 (with cable gland)	II 2G Ex db mb IIC T4/ T6 Gb II 2G Ex eb mb IIC T4/ T6 Gb II 2D Ex tb IIIC T130°C Db	T4: -40 ... +70 T6: -40 ... +40 -40 ... +70	M20 x 1,5 *1)	7	20	4672
	—	10,0	—	43	IP66 (with cable gland)	II 2G Ex db mb IIC T4/ T6 Gb II 2G Ex eb mb IIC T4/ T6 Gb II 2D Ex tb IIIC T130°C Db	T4: -40 ... +70 T6: -40 ... +40 -40 ... +70	M20 x 1,5 *1)	7	21	4673
	8,9	—	369	—	4x	Cl. I, Div. 1, Gr. A - D Cl. II/III, Div. 1, Gr. E - G T3C (160°C)	-20 ... +60	Flying leads length 460 mm	8	1	3824
	—	9,5	—	41	4x	Cl. I, Div. 1, Gr. A - D Cl. II/III, Div. 1, Gr. E - G T3C (160°C)	-20 ... +60	Flying leads length 460 mm	8	5	3825

Standard voltages (±10%) 24 V d.c., 230 V a.c., other voltages on request. Design according to VDE 0580, EN 50014/50028. 100% duty cycle.

*1) Connector/cable gland is not scope of delivery, see table »Accessories«

Attention: The protection class for coil series 46xx and 48xx is determined by the choice of cable gland.

Example: if an ATEX-certified cable gland is used that has Ex d type of protection, the solenoid will have the protection class Ex db mb; if a cable gland with Ex e type of protection is used, the solenoid will have protection class Ex eb mb.

Approvals

Model	Approvals		IECEX	FM	Datasheet
	ATEX				
372x, 382x	—	—	—	CSA-LR 57643-6	N/en 71.575
42xx	KEMA 98 ATEX 4452 X	—	IECEX KEM 09.0068X	—	N/en 71.580
46xx	PTB 02 ATEX 2085 X	—	IECEX PTB 11.0094X	—	N/en 71.585

Solenoids group 16D, standard voltages

	Power consumption		Rated current		Protection class IP/NEMA	Ex-Protection (ATEX-Category)	Temperature Ambient/Media (°C)	Electrical connection	Drawing No.	Circuit diagram No.	Model
	24 V d.c. (W)	230 V a.c. (VA)	24 V d.c. (mA)	230 V a.c. (mA)							
	16,9	—	703	—	IP65 (with connector)	—	-25 ... +60 Media: +80 max	Connector DIN EN 175301-803, form A *1)	3	1	0800
	—	17,3	—	75	IP65 (with connector)	—	-25 ... +60 Media: +80 max	Connector DIN EN 175301-803, form A *1)	4	6	3803
	16,9	—	703	—	IP65 (with connector)	II 3G Ex ec IIC T4 Gc II 3G Ex tc IIIB T130°C Dc	-20 ... +60	Special connector DIN EN 175301-803 Form A	3	1	3817
	—	17,3	—	75	IP65 (with connector)	II 3G Ex ec IIC T4 Gc II 3G Ex tc IIIB T130°C Dc	-20 ... +50	Special connector DIN EN 175301-803 Form A	4	6	3819
	11,4	—	475	—	IP66 (with cable gland)	II 2G Ex eb mb IIC T4/ T5 Gb II 2D Ex tb IIIC T130°C Db	T4: -40 ... +50 T5: -40 ... +40 -40 ... +50	M20 x 1,5 *1)	6	4	4280
	—	15,2	—	66	IP66 (with cable gland)	II 2G Ex eb mb IIC T4/ T5 Gb II 2D Ex tb IIIC T130°C Db	T4: -40 ... +50 T5: -40 ... +40 -40 ... +50	M20 x 1,5 *1)	6	7	4281
	11,4	—	475	—	IP66 (with cable gland)	II 2G Ex db mb IIC T4/ T6 Gb II 2G Ex eb mb IIC T4/ T6 Gb II 2D Ex tb IIIC T130°C Db	T4: -40 ... +50 T5: -40 ... +40 -40 ... +50	1/2 NPT *1)	7	20	4680
	—	15,2	—	66	IP66 (with cable gland)	II 2G Ex db mb IIC T4/ T6 Gb II 2G Ex eb mb IIC T4/ T6 Gb II 2D Ex tb IIIC T130°C Db	T4: -40 ... +50 T5: -40 ... +40 -40 ... +50	1/2 NPT *1)	7	21	4681
	11,4	—	475	—	IP66 (with cable gland)	II 2G Ex db mb IIC T4/ T6 Gb II 2G Ex eb mb IIC T4/ T6 Gb II 2D Ex tb IIIC T130°C Db	T4: -40 ... +50 T5: -40 ... +40 -40 ... +50	M20 x 1,5 *1)	7	20	4682
	—	15,2	—	66	IP66 (with cable gland)	II 2G Ex db mb IIC T4/ T6 Gb II 2G Ex eb mb IIC T4/ T6 Gb II 2D Ex tb IIIC T130°C Db	T4: -40 ... +50 T5: -40 ... +40 -40 ... +50	M20 x 1,5 *1)	7	21	4683
	13,6	—	567	—	4x	Cl. I, Div. 1, Gr. A - D Cl. II/III, Div. 1, Gr. E - G T3C (160°C)	-20 ... +60	Flying leads length 460 mm	8	1	3826
	—	15,7	—	68	4x	Cl. I, Div. 1, Gr. A - D Cl. II/III, Div. 1, Gr. E - G T3C (160°C)	-20 ... +60	Flying leads length 460 mm	8	5	3827

Standard voltages ($\pm 10\%$) 24 V d.c., 230 V a.c., other voltages on request. Design according to VDE 0580, EN 50014/50028. 100% duty cycle.

*1) Connector/cable gland is not scope of delivery, see table »Accessories«

Attention: The protection class for coil series 46xx and 48xx is determined by the choice of cable gland.

Example: if an ATEX-certified cable gland is used that has Ex d type of protection, the solenoid will have the protection class Ex db mb; if a cable gland with Ex e type of protection is used, the solenoid will have protection class Ex eb mb.

Approvals

Model	Approvals ATEX	IECEX		Datashheet	
		IECEX	FM		
372x, 382x	—	—	CSA-LR 57643-6	N/en 71.575	
42xx	KEMA 98 ATEX 4452 X	IECEX KEM 09.0068X	—	N/en 71.580	
46xx	PTB 02 ATEX 2085 X	IECEX PTB 11.0094X	—	N/en 71.585	

Partnumbers for international approval

Land/Approval	Coil/Code	029x	321x/381x	372x/382x	42xx	46xx	48xx
Europa/ATEX	Standard	x	x	-	x	x	x
International/IECEX	Standard	x	x	-	x	x	x
China/NEPSI	-01	-	-	-	x	x	-
Brasilien/INMETRO	-02	-	-	-	x	x	-
Korea/KOSHA (only gas approval)	-03	-	-	-	x	x	x
Russland, Kasachstan & Weißrussland/TR-CU 012	-04	x	-	-	x	x	x
Indien/CCOE	Standard	-	-	-	x	x	-
Taiwan/ITRI	Standard	-	-	-	x	x	-
USA/FM	Standard	-	-	x	-	-	-
Kanada/CSA	Standard	-	-	x	-	-	-

Example: 000000427002400-04

(Coil: 4270; Voltage: 24V DC; Approval: TR-CU 012)

Accessories

Electrical connection



Cable gland
Protection class Ex e, Ex d (ATEX).
Nickel plated brass/
Stainless steel

Page 9

For sole-noid	Thread	Cable Ø (mm)	Material	Protection class (ATEX)	Ambient temperatur limitation *1)	Model
42xx	M20 x 1,5	7,0 ... 12,0	Plastic	II 2G Ex e / II 2D Ex t	See table	0589735
42xx	M20 x 1,5	10,0 ... 14,0	Plastic	II 2G Ex e / II 2D Ex t	See table	0589736
42xx	M20 x 1,5	6,0 ... 12,0	Plastic	II 2G Ex eb / II 2D Ex tb	See table	0589737
42xx	M20 x 1,5	5,0 ... 10,0	Plastic	II 2G Ex e / II 2D Ex t	See table	0589739
46xx	M20 x 1,5	5,0 ... 14,0	Nickel plated brass	II 2G Ex e / II 2D Ex t	-	0589654
46xx	M20 x 1,5	10,0 ... 14,0	Nickel plated brass	II 2G Ex d / II 2D Ex t	-	0588851
46xx	1/2 NPT	7,5 ... 11,9	Nickel plated brass	II 2G Ex d / II 2D Ex t	-	0588925
46xx, 48xx	M20 x 1,5	7,0 ... 12,0	Stainless steel 1.4404	II 2G Ex d / II 2D Ex t	-	0589395
46xx, 48xx	M20 x 1,5	10,0 ... 14,0	Stainless steel 1.4404	II 2G Ex d / II 2D Ex t	-	0589387

*1) The limitation of the temperature range to the mentioned range is due to the self-heating of the solenoid.

For sole-noid	Ambient temperatur limitation solenoid 42xx		
	0589735 & 0589736 *2)	0589737	0589739 *2)
421x/426x	T4 & Dust Ex: -35°C ... + 80°C	T4 & Dust Ex: -40°C...+ 65°C	T4 & Dust Ex: -40...+78°C
	T6: -35°C ... + 55°C	T6: -40°C...+ 55°C	T6: -40...+55°C
422x/427x	T4 & Dust Ex: -35°C +65°C	T4 & Dust Ex: -40°C...+ 62°C	T4 & Dust Ex: -40...+65°C
	T5: -35°C + 55°C	T5: -40°C + 55°C	T5: -40...+55°C
423x/428x	T4 & Dust Ex: -35°C...+50°C	T4 & Dust Ex: -40°C...+50°C	T4 & Dust Ex: -40...+50°C
	T5: -35°C...+40°C	T5: -40°C...+40°C	T5: -40...+40°C

*2) Tested for the lower level of mechanical risk (4 joule), an additional protection against impacts might be needed.

Connector
DIN EN 175301-803



0570275 (Form A)

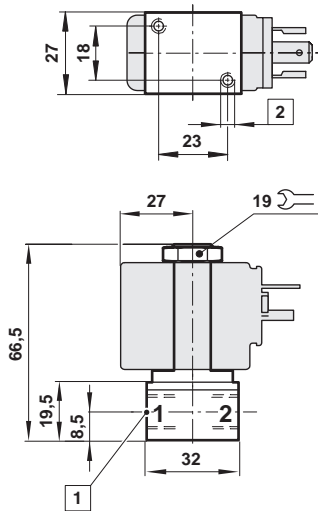
Dimensions

Valves

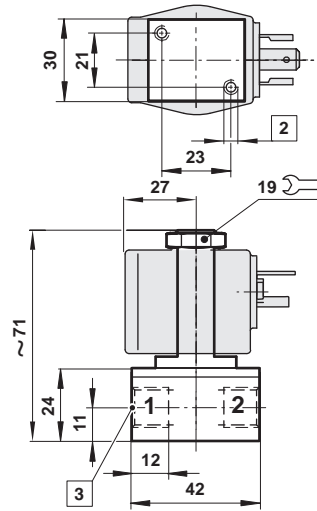
Dimensions in mm
Projection/First angle



①



②



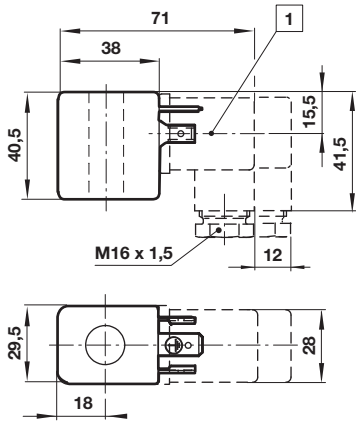
- ① Ports G1/8 or 1/8 NPT
- ② M4 x 6 mm deep
- ③ Ports G1/4 or 1/4 NPT

Drawings - Solenoid

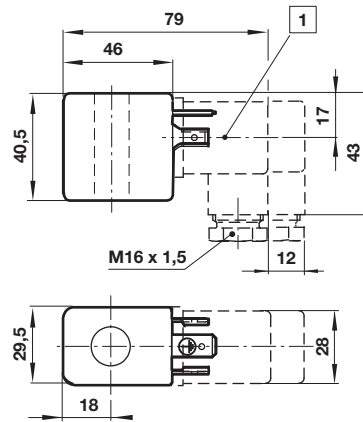
Dimensions in mm
Projection/First angle



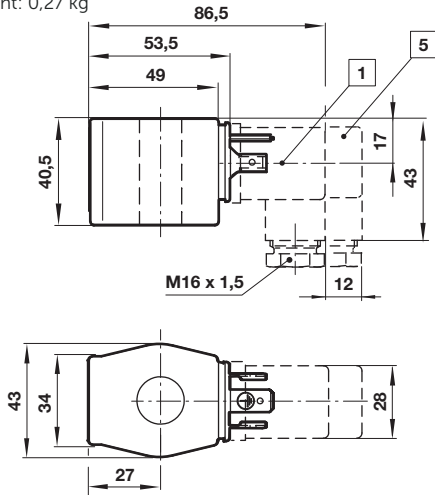
1 Weight: 0,15 kg



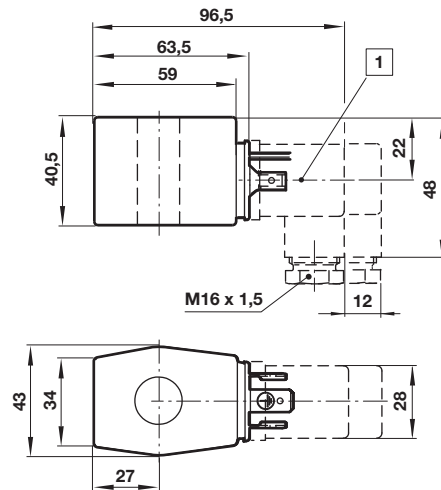
2 Weight: 0,16 kg



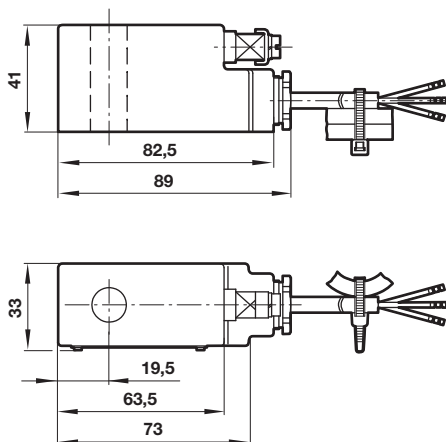
3 Weight: 0,27 kg



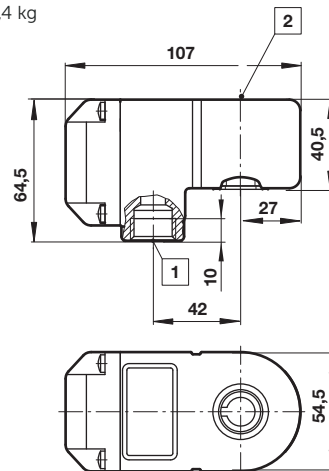
4 Weight: 0,32 kg



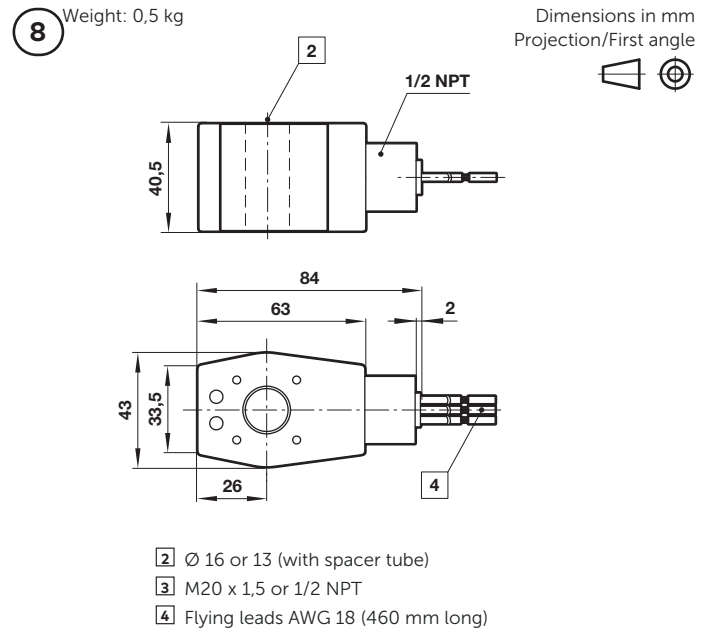
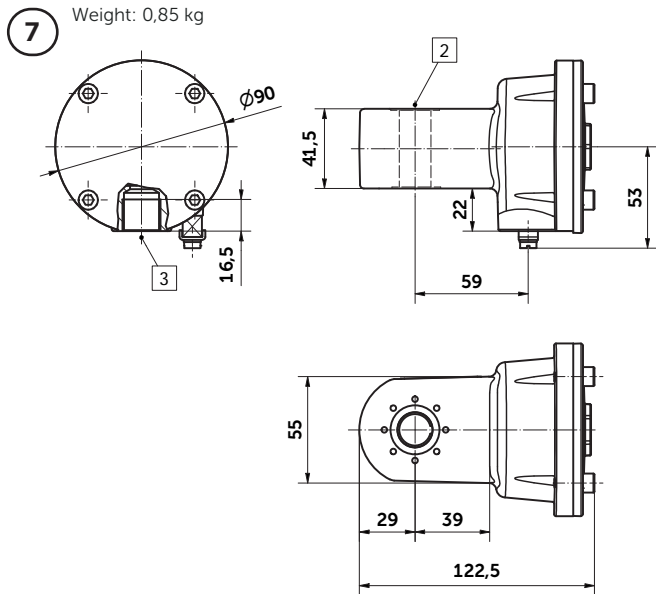
5 Weight: 0,5 kg



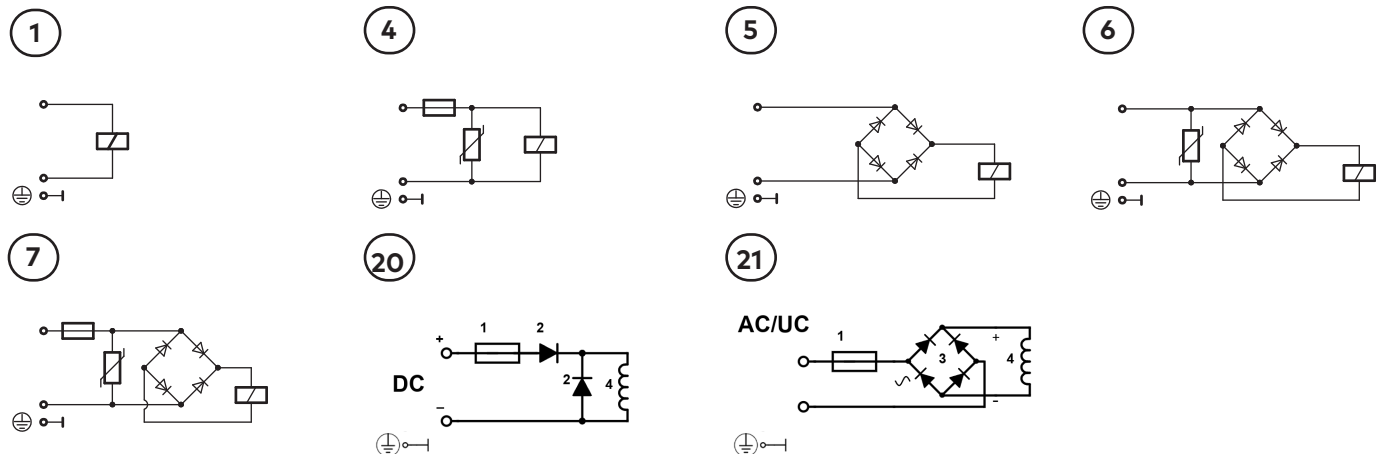
6 Weight: 0,4 kg



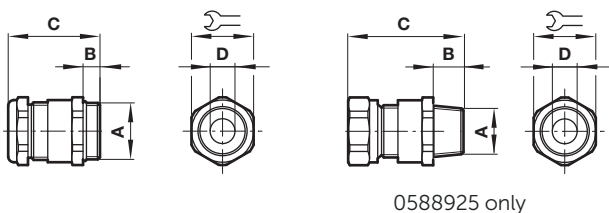
- 1** Connector can be indexed by 4x90°
- 2** Ø 16 or 13 (with spacer tube)



Circuit diagrams



Cable gland



A	B	C	ø D		Model
M20 x 1,5	10	40	7,0 ... 12,0	24	0589735
M20 x 1,5	10	43	10,0 ... 14,0	27	0589736
M20 x 1,5	10	47,8	6,0 ... 12,0	24	0589737
M20 x 1,5	10	39,5	5,0 ... 10,0	24	0589739
M20 x 1,5	6,5	35,5	5,0 ... 14,0	24	0589654
M20 x 1,5	12	37	9,0 ... 14,0	30	0588851
1/2 NPT	15	58	7,5 ... 11,9	24	0588925
M20 x 1,5	16	40	7,0 ... 12,0	24	0589395
M20 x 1,5	16	41	10,0 ... 14,0	24	0589387

Warning

These products are intended for use in industrial compressed air systems only. Do not use these products where pressures and temperatures can exceed those listed under »**Technical features/ data**«.

Before using these products with fluids other than those specified, for non-industrial applications, life-support systems or other applications not within published specifications, consult Norgren.

Through misuse, age, or malfunction, components used in fluid power systems can fail in various modes.

The system designer is warned to consider the failure modes of all component parts used in fluid power systems and to provide adequate safeguards to prevent personal injury or damage to equipment in the event of such failure.

System designers must provide a warning to end users in the system instructional manual if protection against a failure mode cannot be adequately provided.

System designers and end users are cautioned to review specific warnings found in instruction sheets packed and shipped with these products.