



**5/2 Spool Valves
Pressure Actuated
G¹/₈**

- Ideal for direct control of large cylinders
- Rugged, well proven range of valves
- Side ported, bottom ported and manifold sub-bases available
- Simple to service
- Ideal for a very wide range of applications

Technical Data

Medium:

Compressed air, filtered, lubricated and non-lubricated

Operation:

Spool valve, directly actuated

Mounting:

Through holes in sub-base, threaded

Port Size:

G¹/₈

Operating Pressure:

2 - 10 bar

Flow (to CETOP RP50P):

'C' - Conductance dm³/s/bar 0,89

'b' - Critical pressure ratio 0,48

Cv 0,24

Operating Temperature:

-20°C to +80°C

*Consult our Technical Service for use below +2°C

Materials

Pressure diecast zinc alloy body and sub-base, aluminium spool, nitrile rubber seals.

Ordering Information

To order, quote model number from table overleaf, e.g. M/1701/3 for a Pressure Set-reset model.

For manifold models, add number of valves required in manifold after 'T' suffix, e.g. CM/1701/3/T4 for four of the above models ready to be bolted together by means of tie rods supplied.

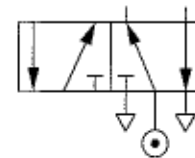
Spare valve bodies can also be supplied to assist servicing and reduce downtime by adding prefix 'Q' to the basic, side ported, valve number and '07' suffix, e.g. QM/1701/3/07.



Alternative Models

Other operator types for the M/1701 range are also available:

Section 5.4. - Solenoid actuated models (M/1761, M/1741)





General Information

Model	Sub-base	Operator	Return	Weight (kg)	Spares kit
M/1701/2	Side ported	Pressure	Air	0,46	QM/1701/00
M/1701/3	Side ported	Pressure	Pressure	0,46	QM/1701/00
M/1701/33	Side ported	Pressure Priority	Pressure	0,46	QM/1701/00
BM/1701/2	Bottom ported	Pressure	Air	0,50	QM/1701/00
BM/1701/3	Bottom ported	Pressure	Pressure	0,50	QM/1701/00
BM/1701/33	Bottom ported	Pressure Priority	Pressure	0,50	QM/1701/00
CM/1701/2/T	Manifold	Pressure	Air	0,59*	QM/1701/00
CM/1701/3/T	Manifold	Pressure	Pressure	0,59*	QM/1701/00
CM/1701/33/T	Manifold	Pressure Priority	Pressure	0,59*	QM/1701/00

*Excludes end plate, tie rods and nuts.

Warning

These products are intended for use in industrial compressed air systems only. Do not use these products where pressures and temperatures can exceed those listed under 'Technical Data'.

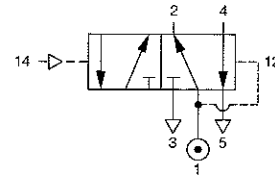
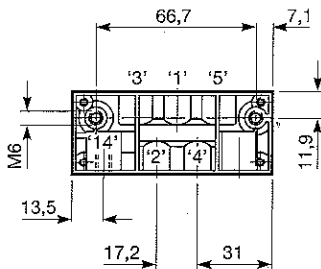
Before using these products with fluids other than those specified, for non-industrial applications, life-support systems, or other applications not within published specifications, consult NORGREN MARTONAIR.

Through misuse, age, or malfunction, components used in fluid power systems can fail in various modes. The system designer is warned to consider the failure modes of all component parts used in fluid power systems and to provide adequate safeguards to prevent personal injury or damage to equipment in the event of such failure.

System designers must provide a warning to end users in the system instructional manual if protection against a failure mode cannot be adequately provided.

System designers and end users are cautioned to review specific warnings found in instruction sheets packed and shipped with these products.

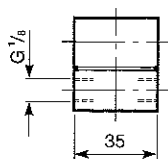
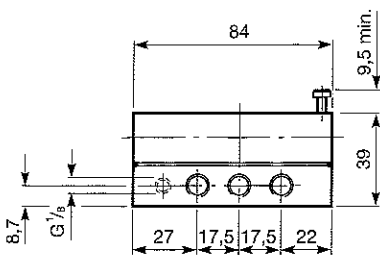
Pressure Actuated, Air Return



Model Number: M/1701/2

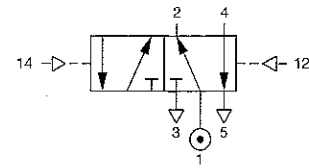
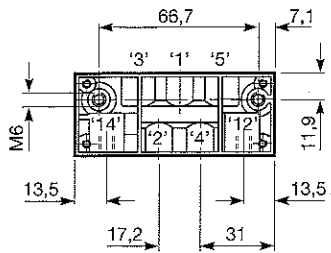
Type: 5/2

Pilot Pressure: 0,7 + (0,6 x supply pressure) bar





Pressure Set-reset

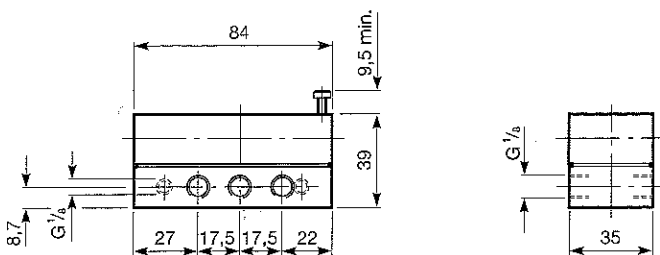


Model Number: **M/1701/3**

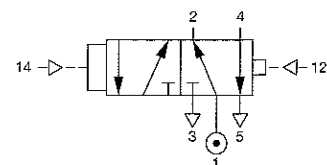
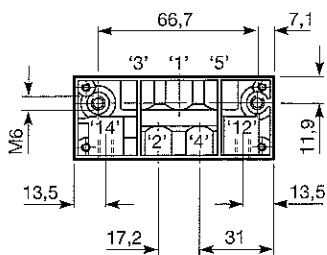
Type: 5/2

Pilot Pressure: 2,0 + (0,25 x supply pressure) bar

Valve should be mounted with the axis of the spool horizontal



Pressure Priority Set, Pressure Reset



Model Number: **M/1701/33**

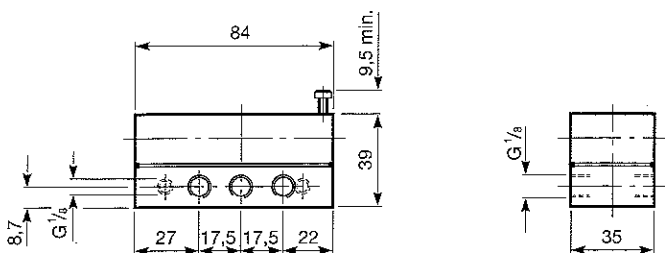
Type: 5/2

Pilot Pressure: Large end '14' 0,8 + (0,10 x supply pressure) bar, '12' at zero

Small end '12' 2,0 + (0,25 x supply pressure) bar, '14' at zero

If air is permanently applied to '12' the pilot pressure to '14' is 0,7 + (0,6 x supply pressure) bar when '12' = supply

Valve should be mounted with the axis of the spool horizontal



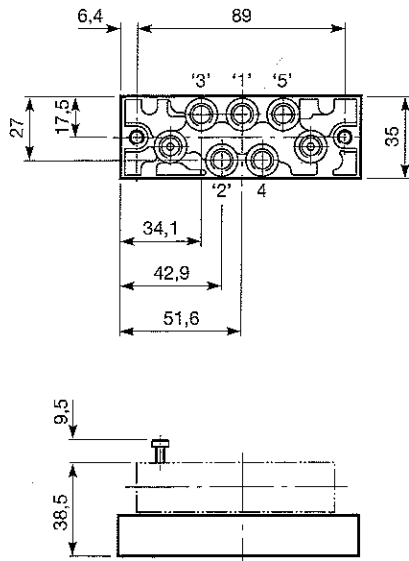


Sub-bases for M/1701 and valves

Bottom Ported Sub-base Models

Model Numbers: **BM/1701/2**
BM/1701/3

Type: Single sub-base with all ports on the bottom

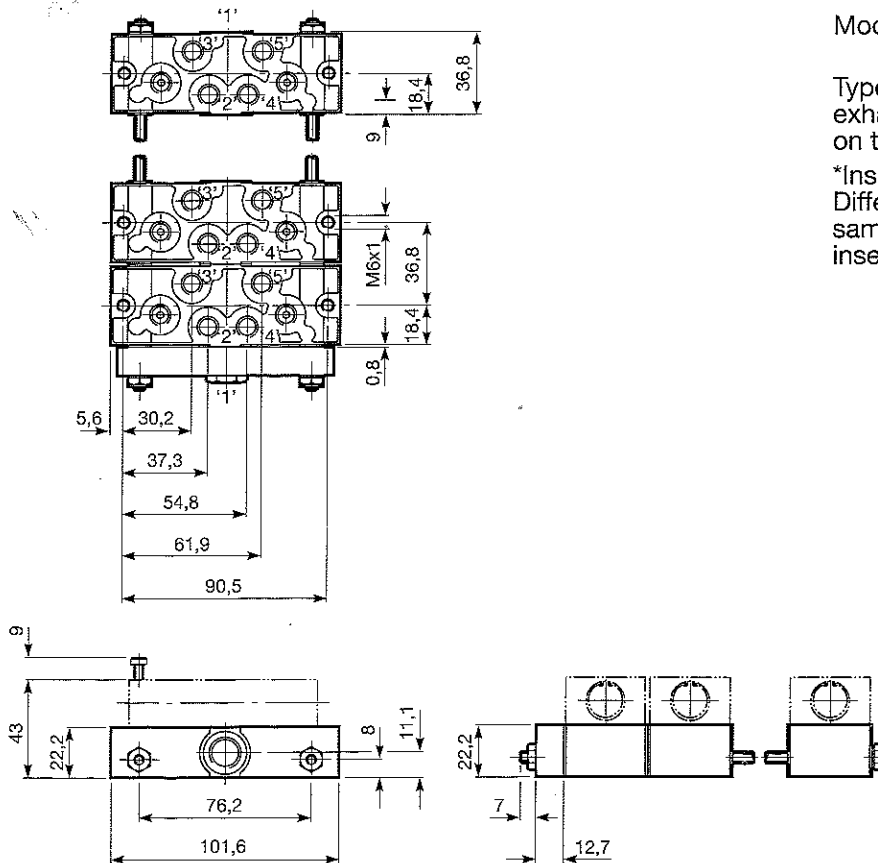


Manifold Sub-base Models

Model Numbers: **CM/1701/2/T***
CM/1701/3/T*

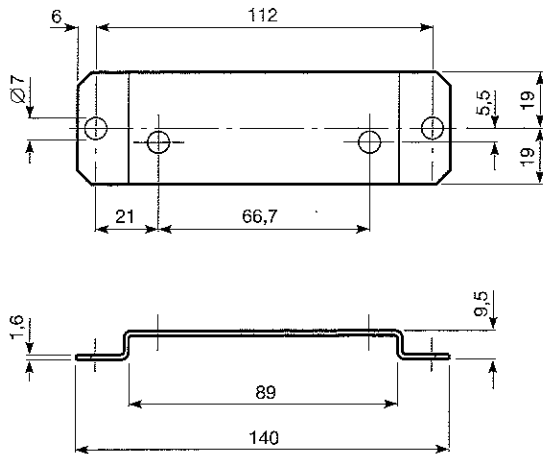
Type: Manifold sub-base with outlet and exhaust ports on the bottom and inlet port on the side for up to six valves.

*Insert number of valves required in manifold. Different models may be assembled in the same manifold. Plug for port '1' may be inserted at either end.





Accessories



Steel fixing plate, including screws and washers, is available for the side ported models, reference QM/1391.