

- Compact, robust valves for a wide variety of situations
- Latching models available, including panel mounting version
- Side ported and bottom ported sub-bases available
- Flow control possible with some models

**4/2 and 4/3 Plate Valves  
Manually Operated  
G<sup>1</sup>/<sub>2</sub>**

**Technical Data**

Medium:

Compressed air, filtered, lubricated and non-lubricated

Operation:

Plate valve, directly operated

Mounting:

Threaded holes in sub-base

Port Size:

G<sup>1</sup>/<sub>2</sub>

Operating Pressure:

1 - 10 bar

Flow (to CETOP RP50P):

'C' - Conductance dm<sup>3</sup>/s/bar 13,16

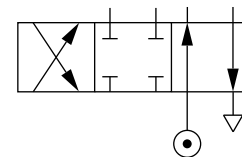
'b' - Critical pressure ratio 0,325

Cv 3,26

Operating Temperature:

-20°C\* to +80°C

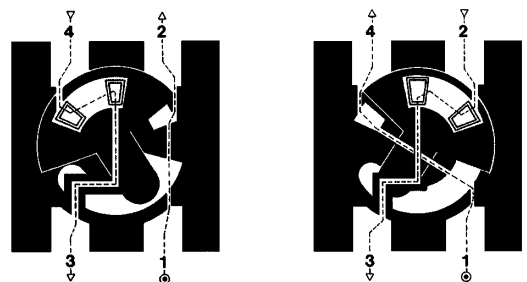
\*Consult our Technical Service for use below +2°C


**Materials**

Aluminium alloy and body, aluminium operators, nitrile rubber seals.

**Ordering Information**

To order, quote model number from table overleaf, e.g. BM/806/107 for the Rotary Lever Set-reset model with a bottom ported sub-base. Valves are supplied complete with sub-base.





## General Information

Model	Sub-base	Operator	Mid-position	Return	Weight (kg)	Spares kit
M/806/107	Side ported	Lever	-	Lever	1,08	QM/806/107/00
M/806/187	Side ported	Lever	Lever	Lever	1,08	QM/806/107/00
M/806/487	Side ported	Lever, Latching	Lever, Latching	Lever, Latching	1,16	QM/806/107/00
BM/806/107	Bottom ported	Lever	-	Lever	1,08	QM/806/107/00
BM/806/487	Bottom ported	Lever, Latching	Lever, Latching	Lever, Latching	1,16	QM/806/107/00
PBM/806/487	Bottom ported	Lever, Latching	Lever, Latching	Lever, Latching	1,16	QM/806/107/00

## Warning

These products are intended for use in industrial compressed air systems only. Do not use these products where *pressures* and *temperatures* can exceed those listed under 'Technical Data'.

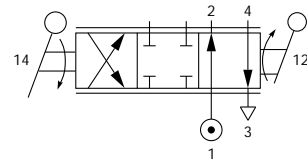
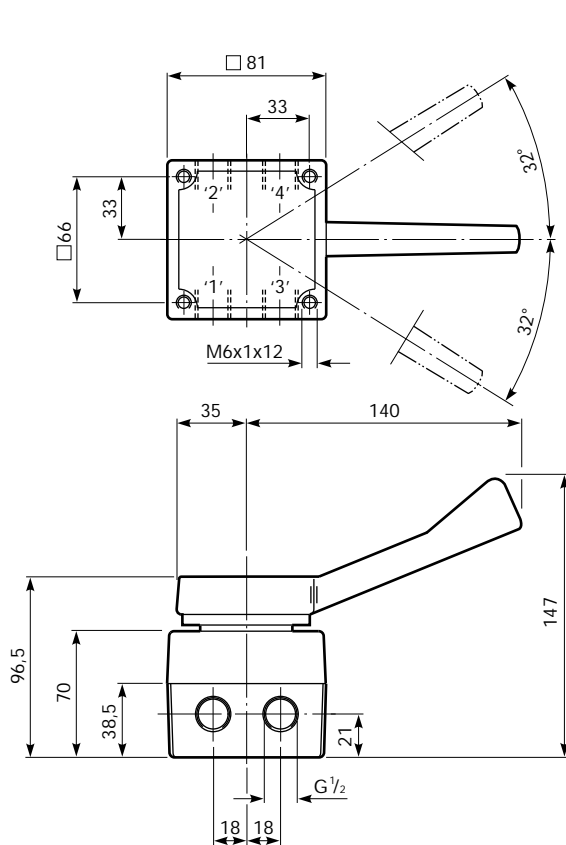
Before using these products with fluids other than those specified, for non-industrial applications, life-support systems, or other applications not within published specifications, consult NORGREN MARTONAIR.

Through misuse, age, or malfunction, components used in fluid power systems can fail in various modes. The system designer is warned to consider the failure modes of all component parts used in fluid power systems and to provide adequate safeguards to prevent personal injury or damage to equipment in the event of such failure.

**System designers must provide a warning to end users in the system instructional manual if protection against a failure mode cannot be adequately provided.**

System designers and end users are cautioned to review specific warnings found in instruction sheets packed and shipped with these products.

## Rotary Lever Set-reset



Model Number: **M/806/107**

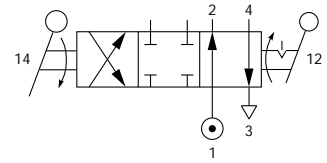
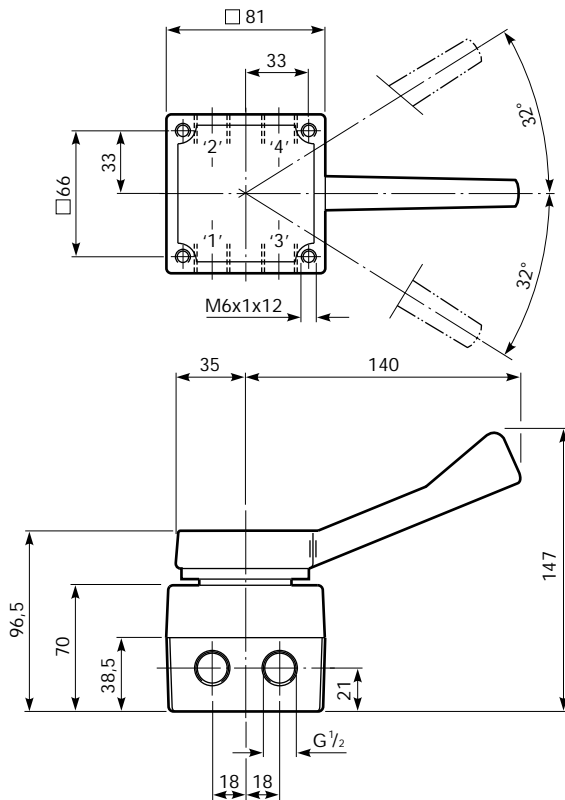
Type: 4/2

Operating Force: 3,2 Nm

By varying the angle of the lever a degree of flow control can be achieved.



### Three Position Lever Operated

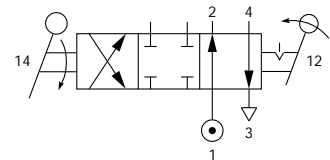
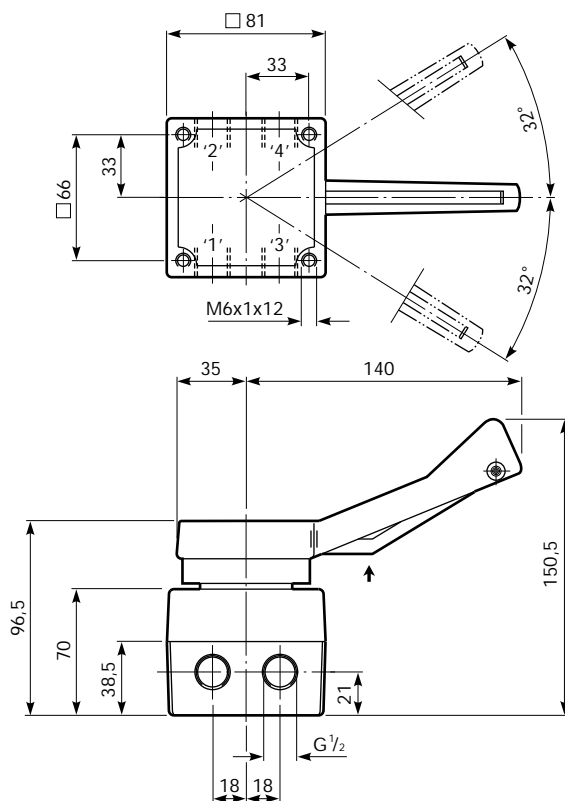


Model Number: **M/806/187**

Type: 4/3 All ports blocked mid-position

Operating Force: 3,2 Nm

### Rotary Lever Latch Operated



Model Number: **M/806/487**

Type: 4/3 All ports blocked mid-position

Operating Force: 3,2 Nm

This valve features a latching mechanism to prevent accidental movement of the lever.



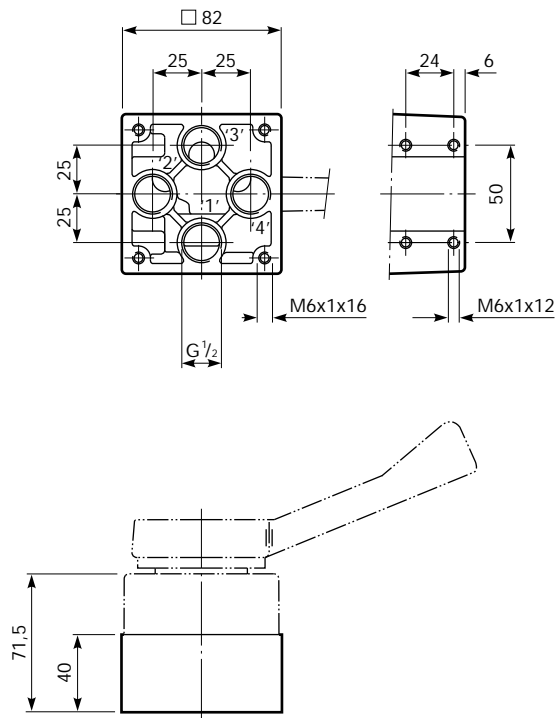
## Sub-bases for M/806 and BM/806 valves

### Bottom Ported Sub-base Models

Model Numbers: **BM/806/107**  
**BM/806/487**  
**PBM/806/487\***

Type: Single sub-base with all ports on the bottom

\*Suitable for panel mounting



### Panel Mounting

