



- Miniature, panel mounted, long life valves
- Glandless spool design gives very light operating forces
- Interchangeable electrical style operators
- Very compact with good flow characteristics

#### Technical Data

##### Medium:

Compressed air, filtered, lubricated and non-lubricated

##### Operation:

Glandless spool valve, directly actuated

##### Mounting:

Panel mounting or through-holes in valve body

##### Port Size:

M5

##### Operating Pressure:

0 - 12 bar

##### Flow (to CETOP RP50P):

'C' - Conductance  $\text{dm}^3/\text{s}/\text{bar}$  0,36

'b' - Critical pressure ratio 0,65

Cv 0,10

##### Operating Temperature:

-20°C\* to +80°C

\*Consult our Technical Service for use below +2°C

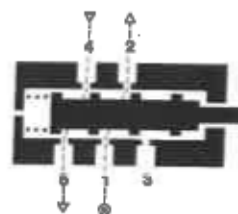
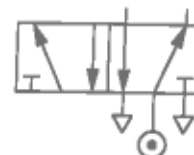
#### Materials

Hard anodised aluminium body, corrosion resistant steel spool and sleeve, zinc alloy top cover, plastic operator and bottom end cover, nitrile rubber seals.

#### Ordering Information

To order, quote model number from table overleaf, e.g. M/50550/1/N for the Button Operated, Spring Return model with a black button.

### 5/2 Glandless Spool Valves Manually Operated M5





M/50550

## General Information

Model	Type	Colour	Operator	Return	Weight (kg)	Spares kit
M/50550/1/R	Normally closed	Red	Button	Spring	0,08	Not available
M/50550/1/G	Normally closed	Green	Button	Spring	0,08	Not available
M/50550/1/N	Normally closed	Black	Button	Spring	0,08	Not available
M/50550/51	Normally closed	Black	Button, Shrouded	Spring	0,08	Not available
M/50550/83/R	Normally closed	Red	Button, Palm	Spring	0,09	Not available
M/50550/83/G	Normally closed	Green	Button, Palm	Spring	0,09	Not available
M/50550/83/N	Normally closed	Black	Button, Palm	Spring	0,09	Not available
M/50550/388	Normally closed	Red	Button	Twist Button	0,09	Not available
M/50550/349	Normally closed	Red	Button	Key	0,16	Not available
M/50550/307	Normally closed	—	Rotary Knob	Rotary Knob	0,09	Not available
M/50550/49	Normally closed	—	Key	Key	0,16	Not available

## Warning

These products are intended for use in industrial compressed air systems only. Do not use these products where pressures and temperatures can exceed those listed under 'Technical Data'.

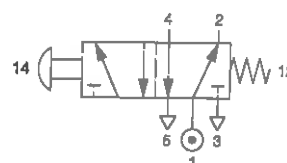
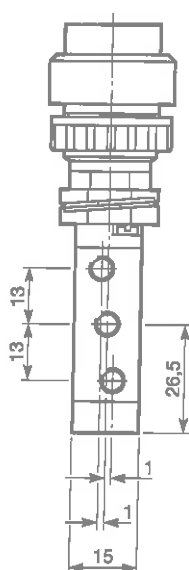
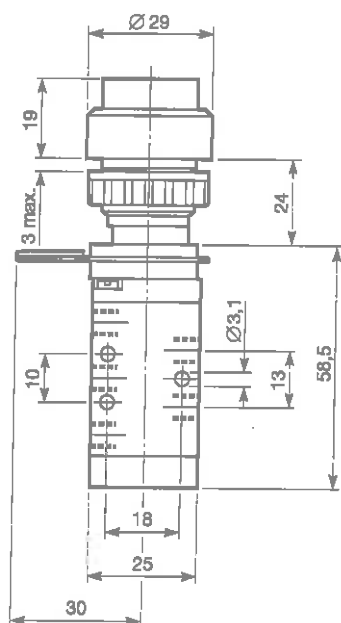
Before using these products with fluids other than those specified, for non-industrial applications, life-support systems, or other applications not within published specifications, consult NORGREN MARTONAIR.

Through misuse, age, or malfunction, components used in fluid power systems can fail in various modes. The system designer is warned to consider the failure modes of all component parts used in fluid power systems and to provide adequate safeguards to prevent personal injury or damage to equipment in the event of such failure.

System designers must provide a warning to end users in the system instructional manual if protection against a failure mode cannot be adequately provided.

System designers and end users are cautioned to review specific warnings found in instruction sheets packed and shipped with these products.

## Button Operated, Spring Return

Model Number: **M/50550/1/R**

Type 5/2

Colour: Red

Operating Force: 15 N at 6 bar

Model Number: **M/50550/1/G**

Type 5/2

Colour: Green

Operating Force: 15 N at 6 bar

Model Number: **M/50550/1/N**

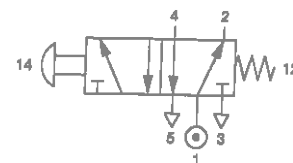
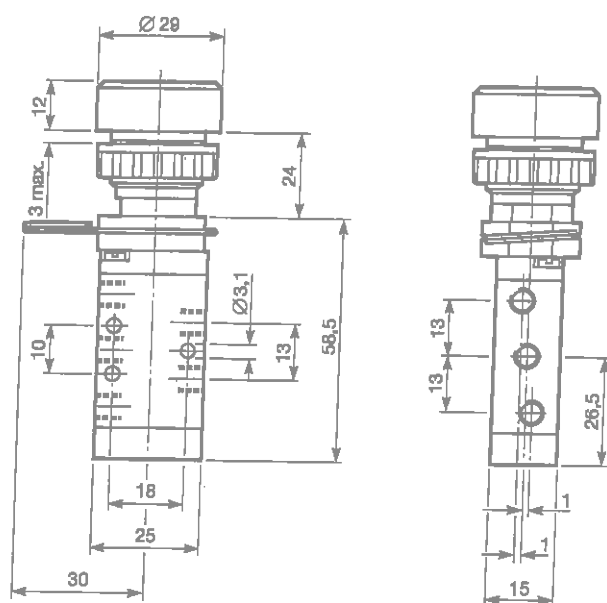
Type 5/2

Colour: Black

Operating Force: 15 N at 6 bar

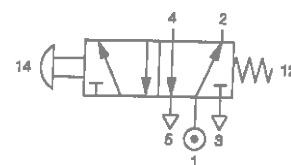
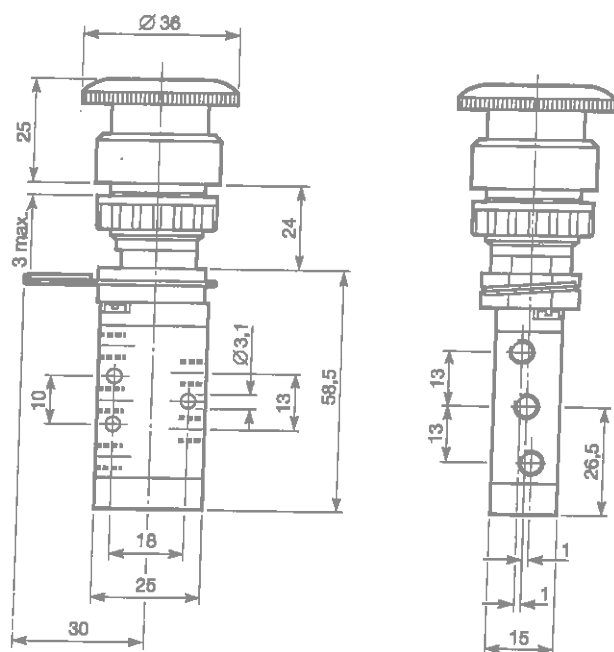


## Button (Shrouded) Operated, Spring Return



Model Number: **M/50550/51**  
 Type 5/2  
 Colour: Black  
 Operating Force: 10 N at 6 bar

## Button (Palm) Operated, Spring Return



Model Number: **M/50550/83/R**  
 Type 5/2  
 Colour: Red  
 Operating Force: 10 N at 6 bar

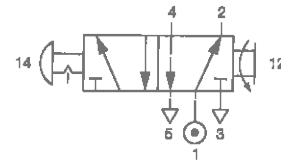
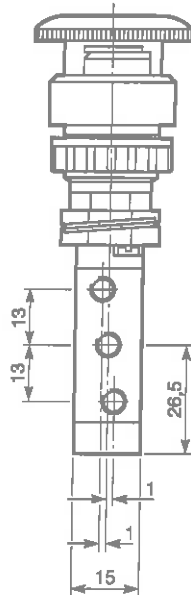
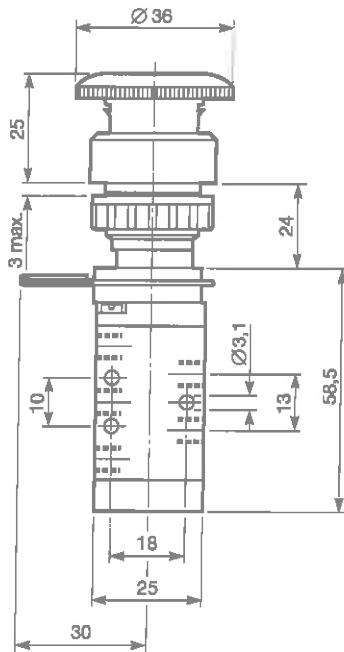
Model Number: **M/50550/83/G**  
 Type 5/2  
 Colour: Green  
 Operating Force: 10 N at 6 bar

Model Number: **M/50550/83/N**  
 Type 5/2  
 Colour: Black  
 Operating Force: 10 N at 6 bar



M/50550

## Palm Button Set, Twist Reset



Model Number: **M/50550/388**

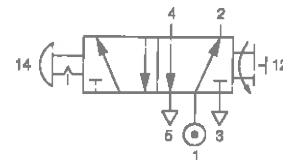
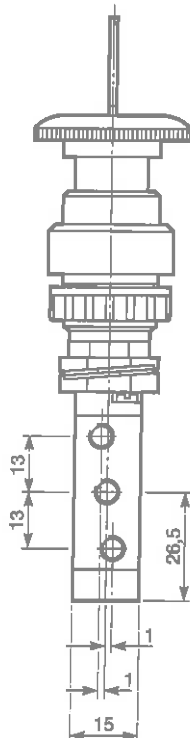
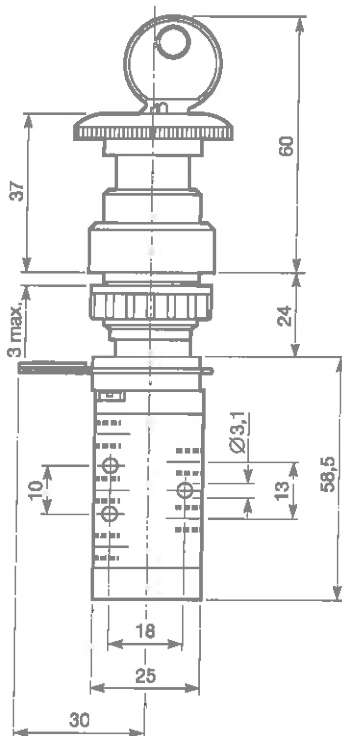
Type 5/2

Colour: Red, engraved 'STOP'

Operating Force: 40 N at 6 bar

Valve latches when button is depressed and returns when button is turned clockwise.

## Palm Button Set, Key Reset



Model Number: **M/50550/349**

Type 5/2

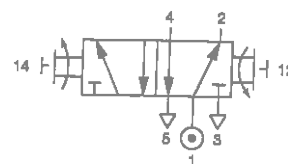
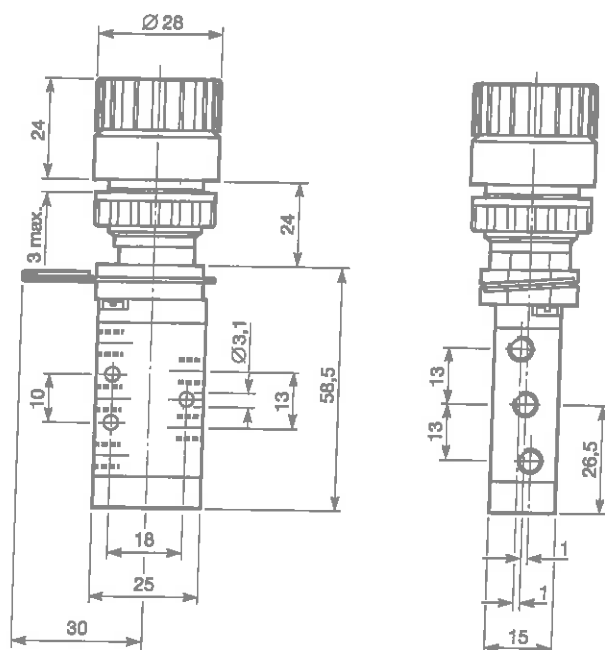
Colour: Red

Operating Force: 30 N at 6 bar

Valve latches when button is depressed. To reset, turn key 30° clockwise.



## Rotary Knob Set-reset

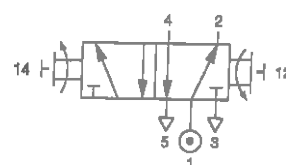
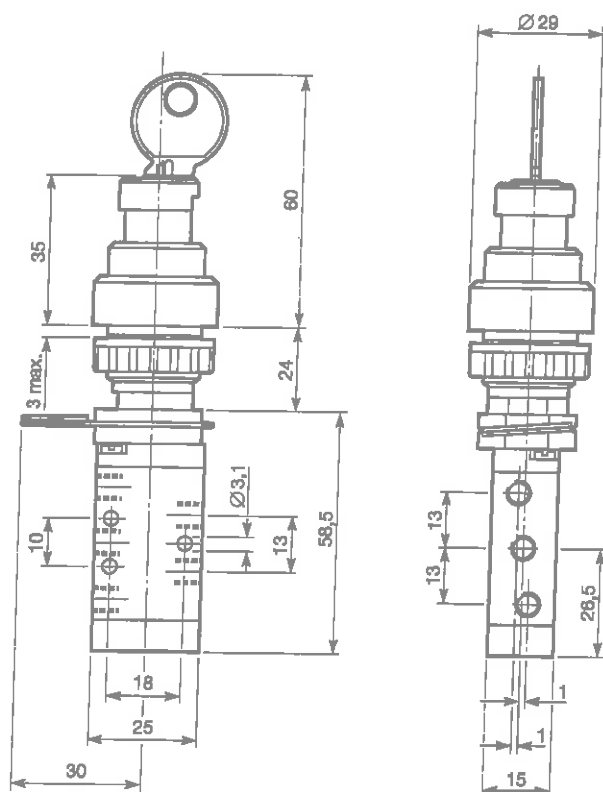


Model Number: **M/50550/307**

Type 5/2

Operating Torque: 0,2 Nm at 6 bar

## Key Set-reset



Model Number: **M/50550/49**

Type 5/2

Operating Force: 20 N at 6 bar

To operate turn key 30° clockwise, hold and push. Hold in position and turn 30° anti-clockwise to lock on. To reset, turn key 30° clockwise to release mechanism. Key can be inserted or removed with the valve in the operated or reset condition.

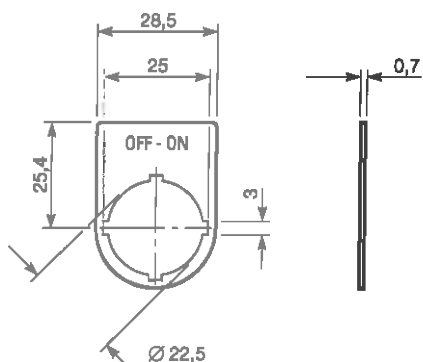


M/50550

## Panel Cut-out

Panel Thickness: 3 mm maximum excluding Legend Plate

## Legend Plates



Legend	Reference	Suitable for
OFF-ON	M/P22636/1	M/50550/307
STOP-START	M/P22636/2	M/50550/307
MAN-AUTO	M/P22636/3	M/50550/307
RESET SET	M/P22636/4	M/50550/307
STOP	M/P22636/5	M/50550/1, M/50550/49, M/50550/51, M/50550/83, M/50550/349, M/50550/388
START	M/P22636/6	M/50550/1, M/50550/49, M/50550/51, M/50550/83, M/50550/349, M/50550/388