

- > 3/2 Solenoid valves;
Port size: 1/4" (ISO G or NPT),
Manifold Mount
- > Direct acting solenoid valve
- > High flow capability
- > Low power consumption
- > Offers SIL 2 performance as 1oo1, SIL 3 as 1oo2
- > IECEx and ATEX certified, complies with ATEX directive 2014/34/EU
- > Environmental protection: NEMA 4X, IP 66



Technical features

Medium:
Water Glycol
Hydraulic Mineral Oil
Operation:
3/2 Normally Closed (Fixed)

Operating pressure:
50 ... 350 bar (725 ... 5076 psi)
(Tank Line Max 10 bar (145 psi))
Flow:
0,028 Cv (0,4 Kv)
Port size:
1/4 NPT, G1/4, Manifold mount

Mounting position:
Solenoid vertical
Ambient/media temperature:
-30 ... +90°C (-22 ... +194°F) (NBR)
-20 ... +90°C (-4 ... +194°F) (FPM)

Materials:
Body: 316L Stainless Steel
Seal: NBR, FPM

Note:
For additional technical information and application suitability and limitations, please consult product manual MIO600.

Technical data - standard models

Symbol	Port size	Cv	Conduit connection	Seal Material	Weight (kg)	(lbs)	Drawing No.	Model
	Manifold mount	0,028	M20	NBR	2,1	4,6	1	Y0X4ANHH1BS
	Manifold mount	0,028	1/2 NPT	NBR	2,1	4,6	1	Y0X4ANHH2BS
	1/4 NPT	0,028	1/2 NPT	NBR	3,0	6,6	2	Y0X4AA1H2BS
	G1/4	0,028	M20	NBR	3,0	6,6	2	Y0X4AE1H1BS

Other product and body material available for more information contact Maxseal technical service

Electrical details

Voltage:	24 V d.c., 48/50 V d.c., 110 V d.c., 125 V d.c.
Rating:	
Power consumption:	3W / 1W* / 0.5W (Exia)*
Insulation class	Class H
Conduit connection	1/2 NPT or M20 x 1,5
IP-Protection class	IP 66
EN 60529	

*1) Contact Factory Concerning Availability

ATEX details

Certification:	Ex db IIC T4/T6
Ambient temperature:	1/4 ... Manifold Mount T4: -30 ... +90°C (-22 ... +194°F) T6: -30 ... +50°C (-22 ... +122°F)
Additional Global Approvals:	In-Metro, TR CU, CCOE, NEPSI

Option selector

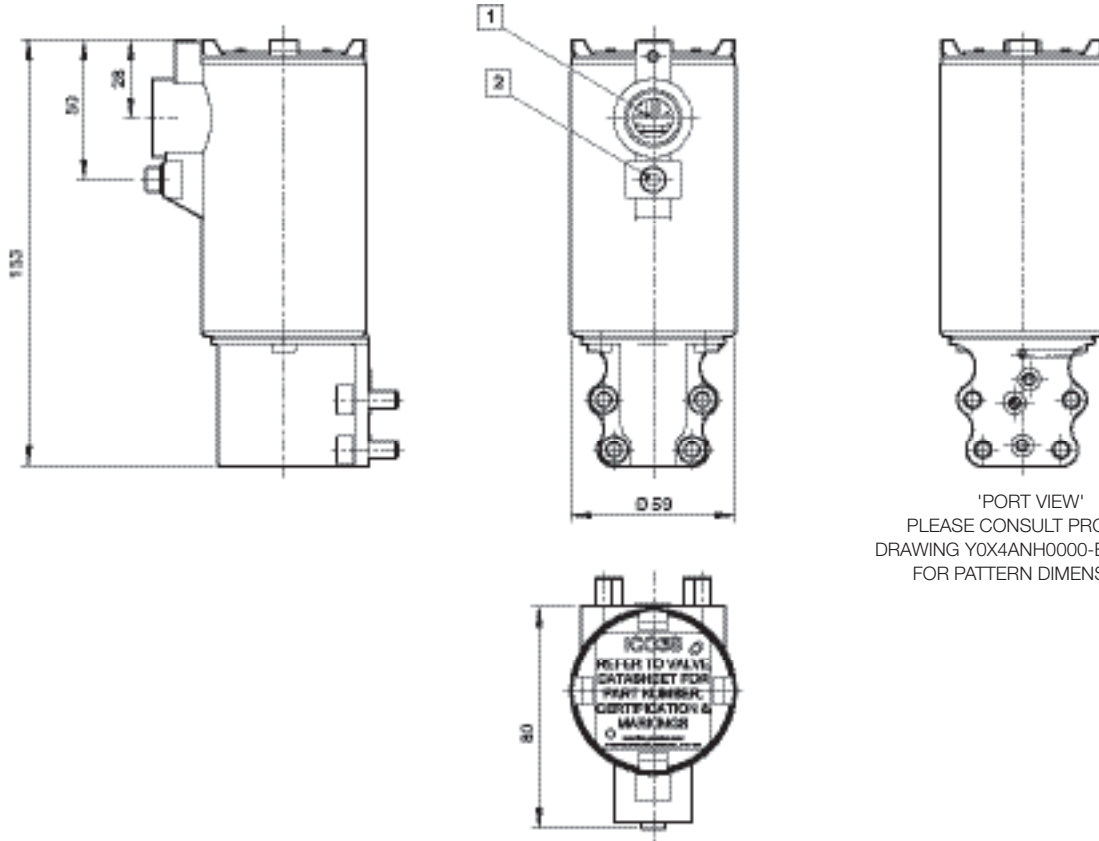
X4A**S

Valve type	Substitute	Voltage / Signal	Substitute
ICO3S Ex d	Y0	24 V d.c.	B
ICO3S Ex mbe	YZ	48/50 V d.c.	C
		110 V d.c.	D
		125 V d.c.	E
Nominal bore size & female thread	Substitute	Conduit connection	Substitute
1/4 NPT (6 mm)	A1	M20 x 1,5 mm	1
1/4 BSPP (6 mm)	E1	1/2 NPT	2
Manifold face mount	NH	Seat/seal material	Substitute
		NBR	H
		FPM	V

Dimensions

1

Dimensions shown in mm
 Projection/First angle

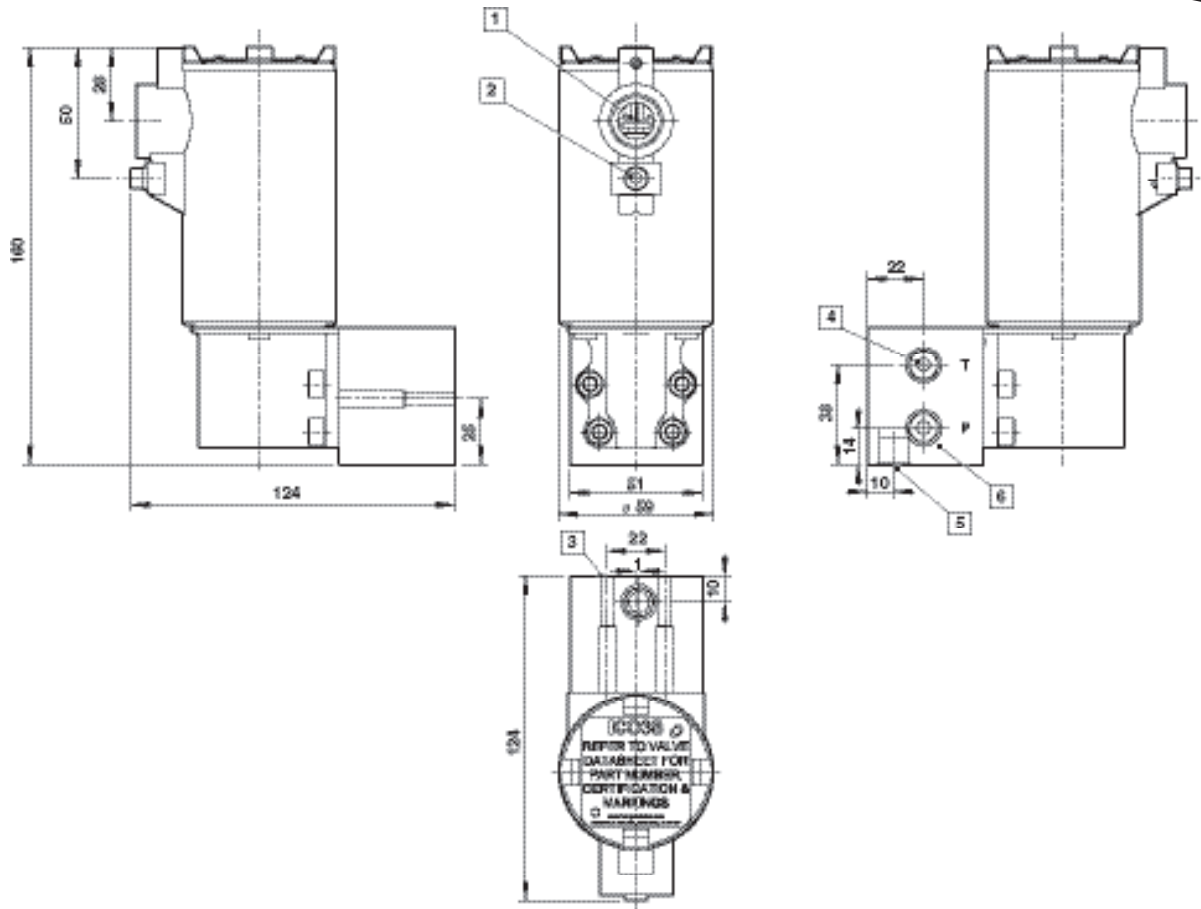


- 1 Conduit connection
 M20 x 1,5 or 1/2 NPT
- 2 External Earth

Dimensions

 Dimensions shown in mm
 Projection/First angle

2



- 1 Conduit connection
M20 x 1,5 or 1/2 NPT
- 2 External Earth
- 3 Mounting holes M5
- 4 Tank port
- 5 Actuator Port (Hidden Detail)
- 6 Pressure port

Warning

These products are intended for use in industrial hydraulic systems only. Do not use these products where pressures and temperatures can exceed those listed under »**Technical features/data**«.

Before using these products with fluids other than those specified, for non-industrial applications, life-support systems or other applications not within published specifications, consult IMI Precision Engineering, Thompson Valves Ltd.

Through misuse, age, or malfunction, components used in fluid power systems can fail in various modes. The system designer is warned to consider the failure modes of all component parts used in fluid power systems and to provide adequate safeguards to prevent personal injury or damage to equipment in the event of such failure.

System designers must provide a warning to end users in the system instructional manual if protection against a failure mode cannot be adequately provided.

System designers and end users are cautioned to review specific warnings found in instruction sheets packed and shipped with these products. For further information please see Functional Safety Manual MI0560.