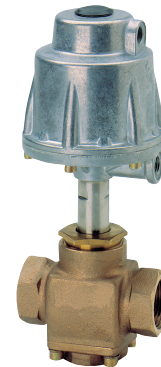


83250 3/2-way seat valves

- Port size:
DN 15 ... 50, G1/2 ... 2
- Suitable for steam
- Can be used as
Y-pattern/selector valve
(pressure connected to A)
- High flow rate
- International approvals



Technical features

Medium:
Neutral gases and liquids

Pilot fluid:
Neutral gases max. +60°C
(+140°F)

Switching function:
Normally closed from P to A,
opened from P to A
by pilot pressure

Operation:
Pressure actuated
by external fluid

Mounting position:
Optional

Flow direction:
Determined

Port size:
G1/2, G3/4, G1,
G1 1/4, G1 1/2, G2

Pilot connection:
G1/4

Operating pressure:
0 ... 10/16 bar (0 ... 145/232 psi)

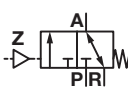
Pilot pressure:
5,5 ... 7 bar (80 ... 98 psi)

Fluid temperature:
–10 ... +180°C (+14 ... +356°F)

Ambient temperature:
max. +60°C (+140°F)

Material:
Process fluid characteristics:
Body: Gun metal
Seat seal: PTFE
Internal parts: Stainless steel,
Brass
Pilot fluid characteristics:
Spindle sealing: PTFE / EPDM
Body: Aluminium
Seal: NBR
Internal parts: Brass, Stainless
steel

Technical data – standard models

Symbol	Port size	Orifice	Flow kv value *1) Way P>A	Flow kv value *1) Way A>R	Operating pressure *2)		Weight	Model
		(mm)	(m³/h)	(m³/h)	(bar)	(psi)	(kg)	
	G1/2	15	5,8	3	0 ... 16	0 ... 232	1,6	8325200.0000.00000
	G3/4	20	11,5	7	0 ... 16	0 ... 232	1,8	8325300.0000.00000
	G1	25	18	12,5	0 ... 10	0 ... 145	2,1	8325400.0000.00000
	G1 1/4	32	25	15	0 ... 16	0 ... 232	6,6	8325500.0000.00000
	G1 1/2	40	39	27	0 ... 14	0 ... 203	6,8	8325600.0000.00000
	G2	50	64	43	0 ... 10	0 ... 145	7,9	8325700.0000.00000

*1) Cv-value (US) ≈ kv value x 1,2

*2) For gases and liquid fluids up to 400 mm²/s (cSt)



Option selector

8325***.0000.00000

Port size	Substitute
1/2	2
3/4	3
1	4
1 1/4	5
1 1/2	6
2	7

Valve options	Substitute
Electrical position indicator a.c./d.c.	57
Electrical position indicator only d.c. max. 30 V	58
Electrical position indicator ATEX labelling: Gas: II 2G Ex db eb IIC T6 Gb Dust: II 2D Ex tb IIIC T80°C Db	64

3/2-way pilot valvel

An electrical solenoid valve can be attached at the pilot connection Z.

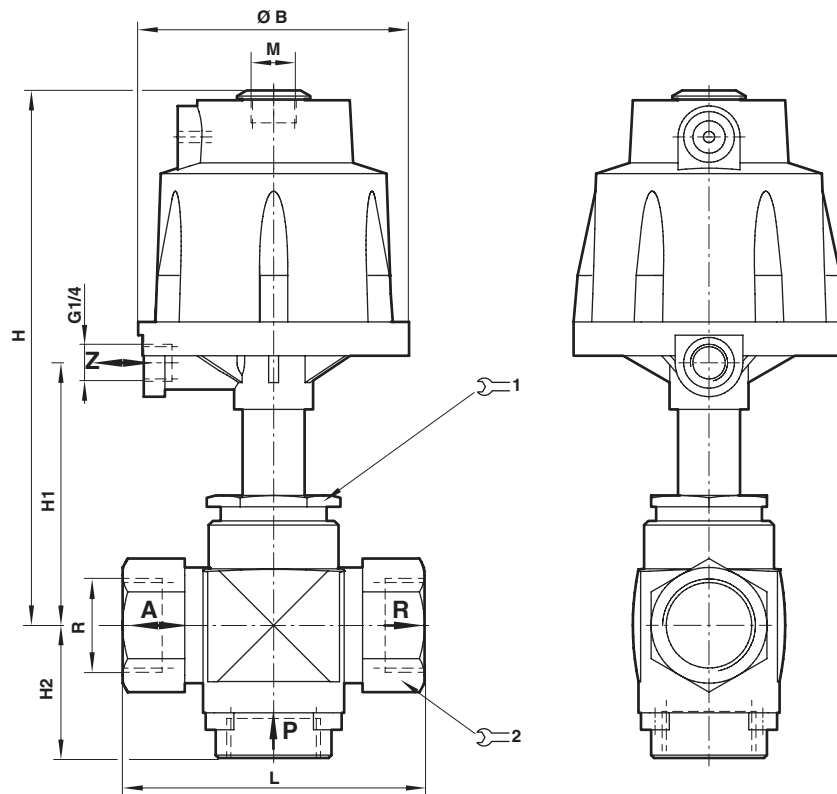
Required parts	Model
3/2-way solenoid valve	8466000.9101.xxxxx (d.c.)
	8466000.9101.xxxxx (a.c.)

Further versions on request!

Dimensions

G1/2 ... 2

Dimensions in mm
Projection/first angle



Port size R	Ø B	H	H1	H2	L	M	1	2	Model
G1/2	96	186	88	41	75	M16 x 1	36	27	8325200.0000.00000
G3/4	96	190	92	46	87	M16 x 1	36	32	8325300.0000.00000
G1	96	190	92	47	107	M16 x 1	41	41	8325400.0000.00000
G1 1/4	164	269	125	66	123	M22 x 1,5	55	50	8325500.0000.00000
G1 1/2	164	269	125	68	147	M22 x 1,5	55	58	8325600.0000.00000
G2	164	273	129	74	171	M22 x 1,5	55	70	8325700.0000.00000

Note to Pressure Equipment Directive (PED):

The valves of this series up to and including DN 25 (G1) are according to Art. 4 § 3 of the Pressure Equipment Directive (PED) 2014/68/EU. This means interpretation and production are in accordance to engineers practice wellknown in the member countries. The CE-sign at the valve does not refer to the PED. Thus the declaration of conformity is not longer applicable for this directive.

For valves > DN 25 (G1) Art. 4 § (1) Letter d) applies:

The basic requirements of the Enclosure I of the PED must be fulfilled. The CE-sign at the valve includes the PED. A certificate of conformity of this directive will be available on request.

Note to Electromagnetic Compatibility Guideline (EEC):

The valves shall be provided with an electrical circuit which ensures the limits of the harmonised standards EN 61000-6-3 and EN 61000-6-1 are observed, and hence the requirements of the Electromagnetic Compatibility Guideline (2014/30/EU) satisfied.