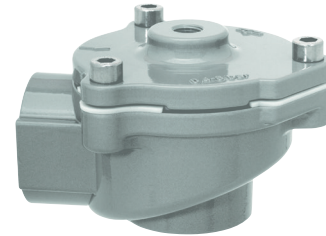


83300/83310

2/2-way diaphragm valves

- > **Port size:**
DN 20 ... 40,
G3/4 ... 1 1/2
(ISO G/NPT)
- > **High flow rate**
- > **Clear, compact design**
- > **One-piece diaphragm**

Stainless Steel



Technical features

Medium:

Air

Switching function:

Normally closed

Operation:

Remote pilot operated

Flow direction:

Determined

Mounting position:

Optional

Port size:

G3/4, G1, G1 1/2,
3/4 NPT, 1 NPT, 1 1/2 NPT

Operating pressure:

0,4 ... 8 bar (5,8 ... 116 psi)

Pilot connection:

G1/8 resp. 1/8 NPT

Dusty gas temperature:

-40 ... +85°C (-40 ... +185°F)

Ambient temperature:

-20 ... +85°C (-4 ... +185°F)

Cleaning gas temperature:

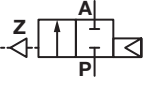
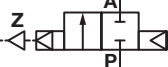
-40 ... +85°C (-40 ... +185°F)

Material:

Body: Stainless steel (1.4408)

Seat seal: TPE

Technical data - standard models

Symbol	Port size	Orifice (mm)	Valve length (mm)	Flow kv value *1) (m³/h)	Operating pressure (bar)	Operating pressure (psi)	Weight (kg)	Model
	G3/4	20	95	18	0,4 ... 8	5,8 ... 116	0,7	8330300.0000.00000
	3/4 NPT	20	95	18	0,4 ... 8	5,8 ... 116	0,7	8331300.0000.00000
	G1	25	95	22	0,4 ... 8	5,8 ... 116	0,8	8330400.0000.00000
	1 NPT	25	95	22	0,4 ... 8	5,8 ... 116	0,8	8331400.0000.00000
	G1 1/2	40	135	59	0,4 ... 8	5,8 ... 116	2,9	8330600.0000.00000
	1 1/2 NPT	40	135	59	0,4 ... 8	5,8 ... 116	2,9	8331600.0000.00000

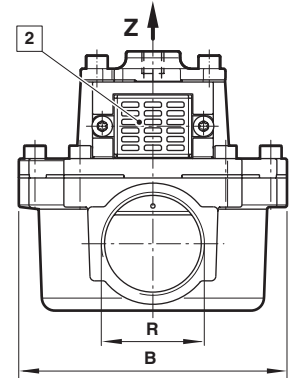
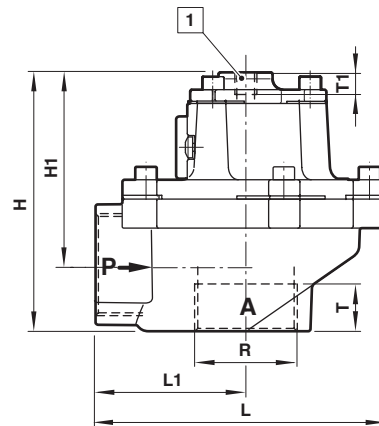
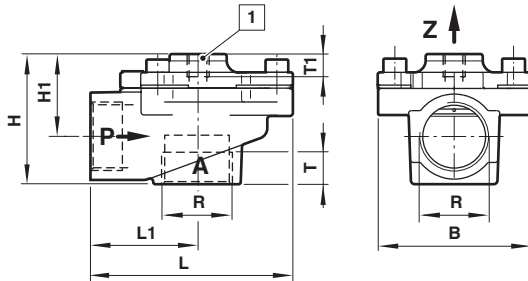
*1) Cv-value (US) = kv value x 1,2

Option selector
833**.0000.00000**

Thread form	Substitute
ISO G	0
NPT	1
Port size	Substitute
3/4	3
1	4
1 1/2	6

Valve options	Substitute
Flange version without valve body	54
Dusty gas temperature version -40 ... +100°C (-40 ... +212°F), Seat seal TPE, Ambient temperature -20 ... +85°C (-4 ... +185°F), Cleaning gas temperature -40 ... +85°C (-40 ... +185°F)	62
Dusty gas temperature version -40 ... +140°C (-40 ... +284°F), Seat seal TPE, Ambient temperature -20 ... +85°C (-4 ... +185°F), Cleaning gas temperature -40 ... +85°C (-40 ... +185°F)	63
Low temperature version Dusty gas temperature version -40 ... +85°C (-40 ... +185°F) Seat seal TPE, Ambient temperature -40 ... +85°C (-40 ... +185°F), Cleaning gas temperature -40 ... +85°C (-40 ... +185°F)	71

Dimensions
G3/4 ... 1
3/4 ... 1 NPT
G11/2
11/2 NPT

 Dimensions in mm
 Projection/First angle


- 1 Pilot connection G1/8 resp. 1/8 NPT
- 2 Silencer

Port size R	B	H	H1	L	L1	T	T1	Model
G3/4	80	61,5	39	95	50	16	10	8330300.0000.00000
3/4 NPT	80	61,5	39	95	50	14	10	8331300.0000.00000
G1	80	61,5	39	95	50	18	10	8330400.0000.00000
1 NPT	80	61,5	39	95	50	17	10	8331400.0000.00000
G11/2	124,5	122	91	135	70	22	10	8330600.0000.00000
11/2 NPT	124,5	122	91	135	70	18	10	8331600.0000.00000

Note to Pressure Equipment Directive (PED):

The valves of this series are according to Art. 4 § 3 of the Pressure Equipment Directive (PED) 2014/68/EU. This means interpretation and production are in accordance to engineers practice well-known in the member countries.

A certificate of conformity is not designated.