

83640

2/2-way valves

- > **Port size:**
Compression Fitting
DN 25 ... 40
- > **High flow rate**
- > **Clear, compact design**
- > **One-piece diaphragm**
- > **Simple mounting**



Technical features

Medium:

Air

Switching function:

Normally closed

Operation:

Remote pilot operated

Flow direction:

Determined

Mounting position:

Optional

Port size:

DN 25, DN 40

Control port:

G1/8

Operating pressure:

0,4 ... 8 bar (5,8 ... 116 psi)

Dusty gas temperature:

-20 ... +85°C (-4 ... +185°F)

Cleaning gas temperature:

-40 ... +85°C (-40 ... +185°F)

Ambient temperature:

-20 ... +85°C (-4 ... +185°F)

Material:

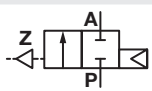
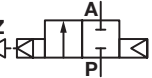
Body: Aluminium

Seat seal: TPE

Note:

Control via separate pilot valve or pilot controller.

Technical data – standard models

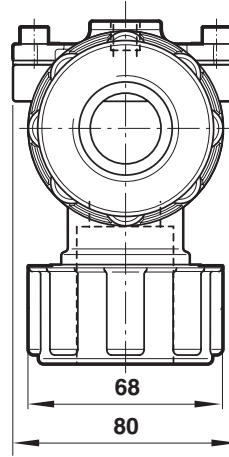
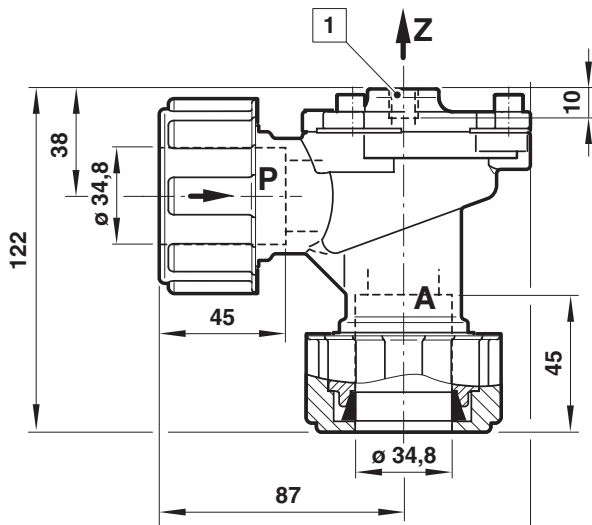
Symbol	Orifice (mm)	Flow kv value *1) (m ³ /h)	Operating pressure		Weight (kg)	Model
			(bar)	(psi)		
	25	22	0,4 ... 8	5,8 ... 116	0,7	8364400.0000.00000
	40	59	0,4 ... 8	5,8 ... 116	1,85	8364600.0000.00000

*1) Cv-value (US) = kv value x 1,2

Option selector
8364*.0000.00000**

Port size	Substitute
25	4
40	6

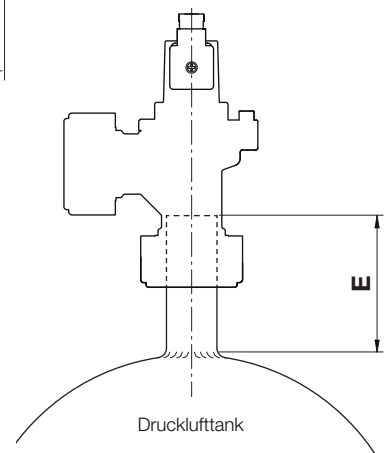
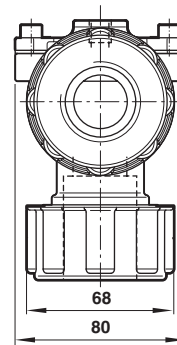
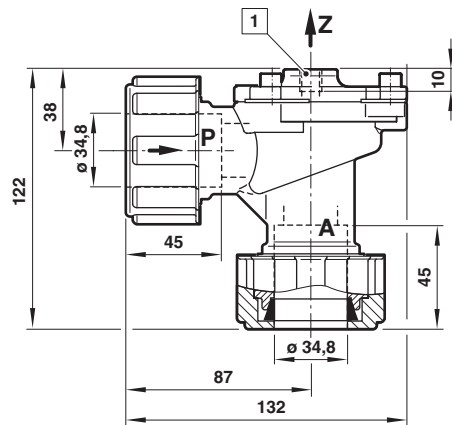
Valve options	Substitute
Dusty gas temperature version -20 ... +100°C (-4 ... +212°F), Seat seal TPE, Ambient temperature -40 ... +85°C (-40 ... +185°F), Cleaning gas temperature -20 ... +85°C (-4 ... +185°F)	62
Dusty gas temperature version -20 ... +140°C (-4 ... +284°F), Seat seal TPE, Ambient temperature -40 ... +85°C (-40 ... +185°F), Cleaning gas temperature -20 ... +85°C (-4 ... +185°F)	63
Low temperature version Dusty gas temperature version -40 ... +85°C (-40 ... +185°F), Seat seal TPE, Ambient temperature -40 ... +85°C (-40 ... +185°F), Cleaning gas temperature -40 ... +85°C (-40 ... +185°F)	71
Pilot connection 1/8 NPT	99

Section View
DN 25
DN 40


No.	Description
101	Valve body
102	Valve cover
*103	Diaphragm
104	Socket head cap screw
*105	Diaphragm
106	Valve cover
*107	Silencer
108	Silencer housing
109	Socket head cap screw
110	Gasket
111	Gasket socket
112	Retainer nut

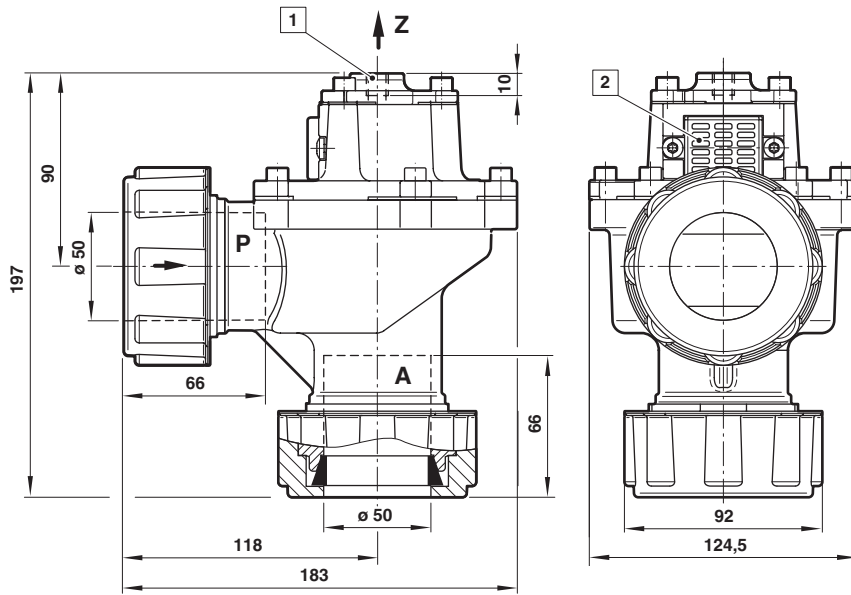
* These individual parts form a complete ring unit.
When ordering spare parts please state Model No. and Series No.

Dimensions
DN 25

 Dimensions in mm
Projection/First angle


Orifice (mm)	E
25	59
40	83

DN 40

 Dimensions in mm
 Projection/First angle


- 1 Pilot connection G1/8
- 2 Silencer

Note to Pressure Equipment Directive (PED):

The valves of this series are according to Art. 4 § 3 of the Pressure Equipment Directive (PED) 2014/68/EU. This means interpretation and production are in accordance to engineers practice well-known in the member countries.

A certificate of conformity is not designated.