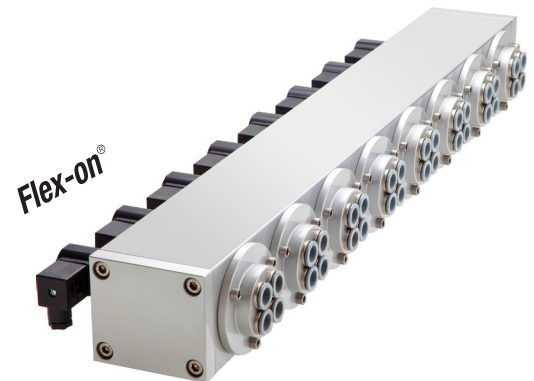


8588xxx System for Dust Collector, with integrated filter valves

- ø 75 mm for DN 25 valves
- Choice of virtually any number of valves at spacing of at least 75 mm
- Different blow-tube connections available include pipe, thread, flange socket, etc.
- Integrated filter pulse valve with TPE diaphragm
- For rapid response, high peak pressures and very good flow rates
- Pilot/Solenoid actuated valve
- International approvals



Technical features

Medium: Air	Dusty gas temperature: –20 ... +80°C (–4 ... +176°F)	Volume: 0,045 dm ³ /cm of tank length	Material: Housing: Aluminium/PA 66 Seat seal: TPE Pilot seal: TPU
Mounting position: Optional	Cleaning gas temperature: –20 ... +80°C (–4 ... +176°F)	Kv-value: 26 m ³ /h apiece valve unit	
Diameter: ø 75 mm	Ambient temperature: –20 ... +80°C (–4 ... +176°F)	Minimum spacing: 90 mm	
Working pressure: 0,4 ... 8 bar (5,8 ... 116 psi) (pulsating)			

Technical data – standard models

Further Informationen

Please contact a member of our sales team, to check the model number. (Phone +49 5731/791-0)

Standard solenoid systems

Voltage and Frequency Solenoid 8171 *1)					
Code Voltage	Code Frequency	Voltage	Frequency	Power consumption	
				Inrush	Holding
024	00	24 V d.c.	-	12 W	12 W
024	50	24 V a.c.	50 Hz	23 VA	16 VA
110	50	110 V a.c.	50 Hz	23 VA	16 VA
120	60	120 V a.c.	60 Hz	23 VA	16 VA
230	50	230 V a.c.	50 Hz	23 VA	16 VA
Voltage and Frequency Solenoid 8001 *1)					
024	00	24 V d.c.	-	12 W	12 W
024	50	24 V a.c.	50 ... 60 Hz	20 VA	16 VA
110	50	110 V a.c.	50 ... 60 Hz	20 VA	16 VA
120	60	120 V a.c.	50 ... 60 Hz	20 VA	16 VA
230	50	230 V a.c.	50 ... 60 Hz	20 VA	16 VA

*1)  US only

Electrical details for all solenoid systems

Design	DIN VDE 0580
Voltage range	±10%
Duty cycle	100% ED
Protection class	EN 60529 IP65
Socket	Form A acc. to DIN EN 175301-803 (included)

According to DIN VDE 0580 at a solenoid temperature of +20°C.

At operating state temperature the input power of a coil decreases by up to ca. 30% due to physical reasons.

Additional solenoid systems for hazardous areas

ATEX category	ATEX protection class	IP protection class	Solenoid	Standard voltages
II 3G II 3D	Ex ec IIC T4 Gc Ex tc IIIC T130°C DC	IP65	8176	24 V d.c., 110 V a.c., 230 V a.c.
II 2G II 2D	Ex eb mb IIC T4 Gb Ex mb tb IIIB T135°C Db	IP66	6176	24 V d.c., 110 V a.c., 230 V a.c.

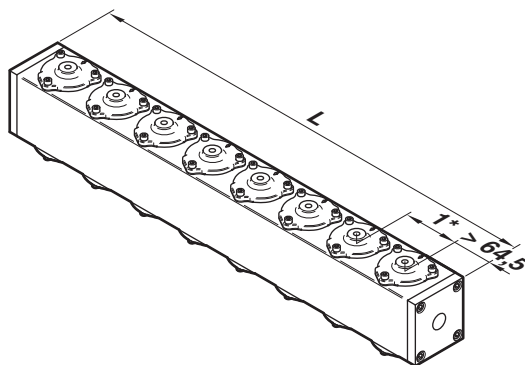
Attention!

The conditions imposed on the Ex approvals lead to reduction of the permissible standard temperature ranges in the cases of explosion protected solenoids.

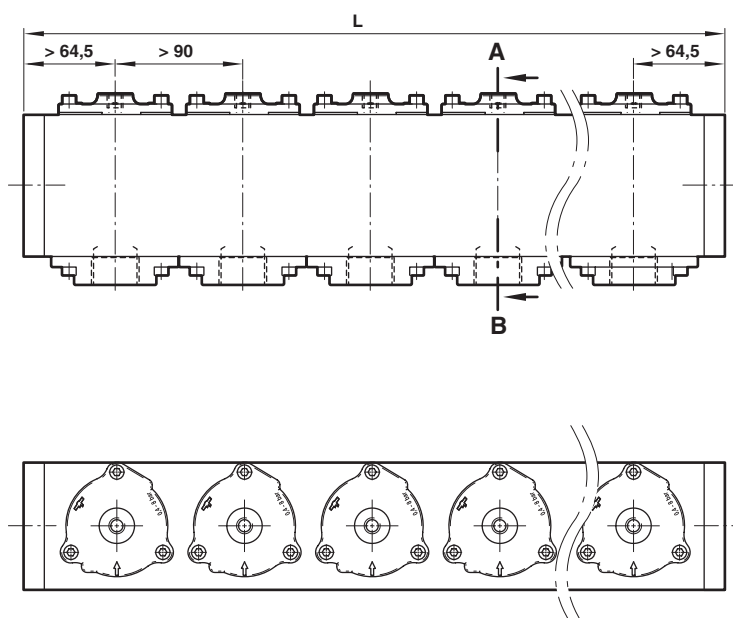
Dimensions

Pneumatic actuated valve

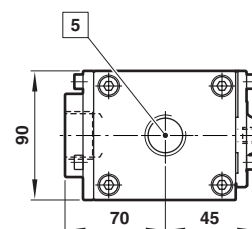
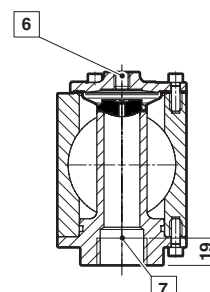
Dimensions in mm
Projection/first angle



- *1) Min. 75 mm, but max. to customer requirement
L Individual length of the filter cleaning system up to max. 1,2 m completely mounted (further dimensions on request)



A - B



- 5 Connection G1/2 resp. 1/2 NPT
- condensate drain
- pressure gauge
- pressure switch
- reading point
- compressed air supply
- input solenoid valve

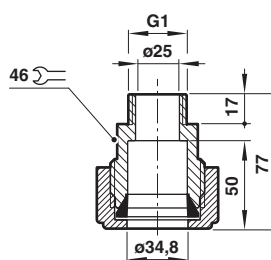
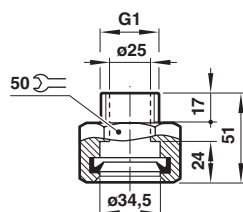
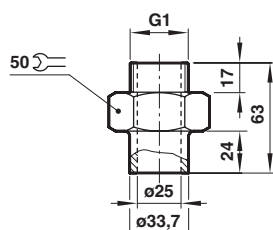
- 6 Pilot connection
G1/8 resp. 1/8 NPT

- 7 Connection thread G1
for adapters

Hose connection

Plug connection

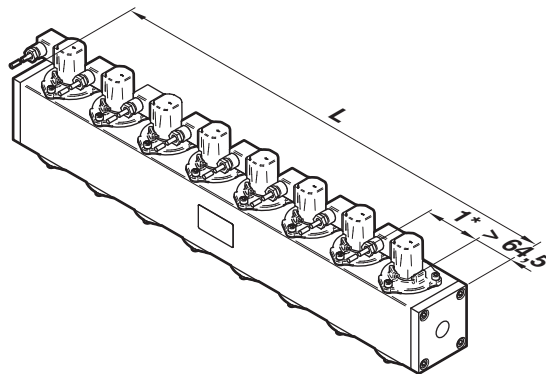
Crimp connection



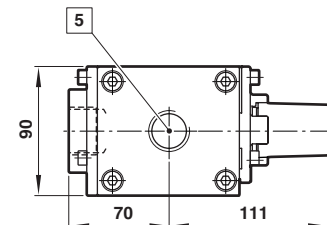
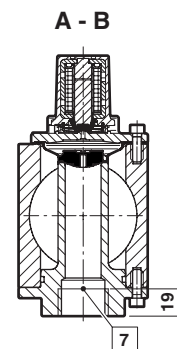
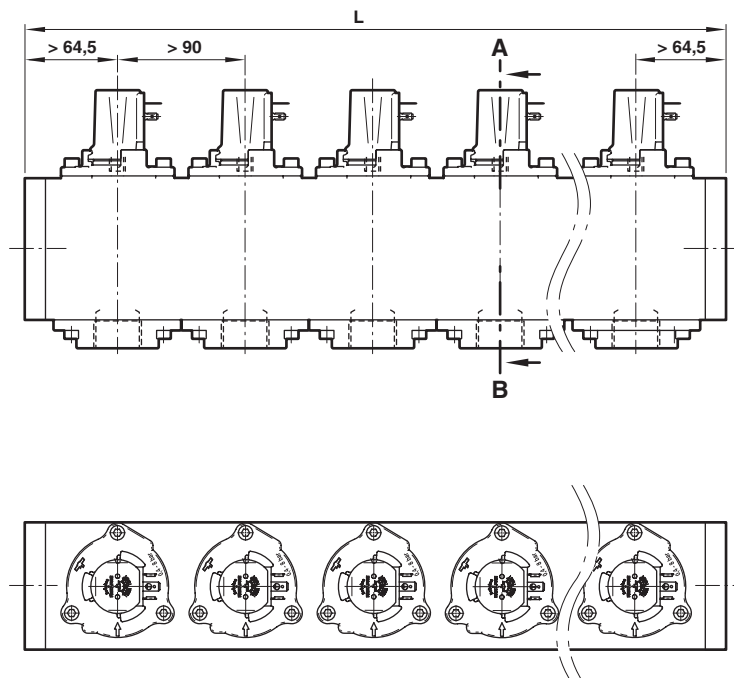
Dimensions

Solenoid actuated valve

Dimensions in mm
Projection/first angle



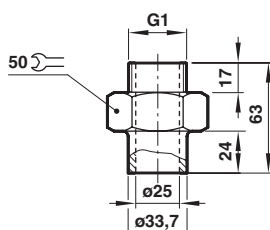
- *1) Min. 75 mm, but max. to customer requirement
L Individual length of the filter cleaning system up to max. 1,2 m completely mounted (further dimensions on request)



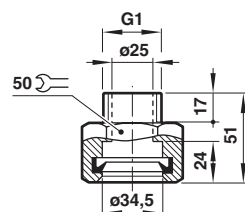
- 5 Connections
- condensate drain
- pressure gauge
- pressure switch
- reading point
- compressed air supply
- input solenoid valve

- 7 Connection thread G1 for adapters

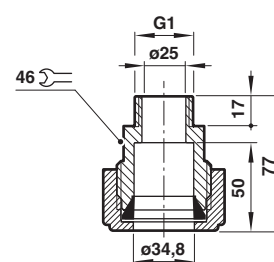
Hose connection



Plug connection



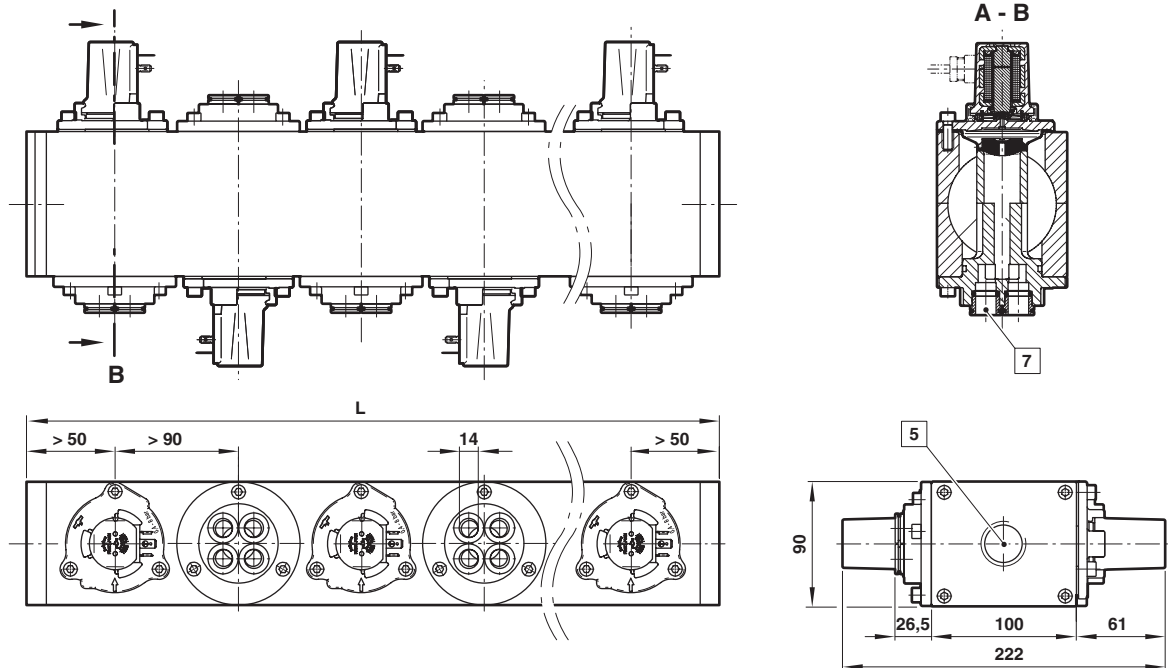
Crimp connection



Dimensions

Special solution

Dimensions in mm
Projection/first angle



L Individual length of the filter cleaning system up to max. 1,2 m completely mounted (further dimensions on request)

5 Connections

- condensate drain
- pressure gauge
- pressure switch
- reading point
- compressed air supply
- input solenoid valve

7 Push-in Connection

Note to Pressure Equipment Directive (PED):

The filter cleaning systems of this series with a pressure-volume product $PS \times V$ up to max. 50 bar * L complies with Art. 4 (3) of the Pressure Equipment Directive (PED) 2014/68 / EU. This means interpretation and production are in accordance to engineers practice wellknown in the member countries. Insofar as a CE marking is available, this does not refer to the PED but to other applicable EU directives. Thus the declaration of conformity is not longer applicable for this directive.

For systems with a pressure-volume product $PS \times V > 50 \text{ bar} * \text{Ltr. Art. 4 (1) (a) (i)}$ second indent applies:

The basic requirements of the Enclosure I of the PED must be fulfilled. The CE-sign on the filter cleaning system includes the PED.

The operating limits and the volume can be found on the nameplate and in the operating instructions. A certificate of conformity of this directive will be available on request.

Note to Electromagnetic Compatibility Guideline (EEC):

The valves shall be provided with an electrical circuit which ensures the limits of the harmonised standards EN 61000-6-3 and EN 61000-6-1 are observed, and hence the requirements of the Electromagnetic Compatibility Guideline (2014/30/EU) satisfied.