



3/2 Spool and sleeve valves

B/LR3 Series

Sub-base mounted

Port size: 1/8" BSP

Operating pressure: 930 milli-bar vacuum to 10 bar
Normal test pressure: 7 bar,
for higher pressure please
specify

Cv. factor: 0.3

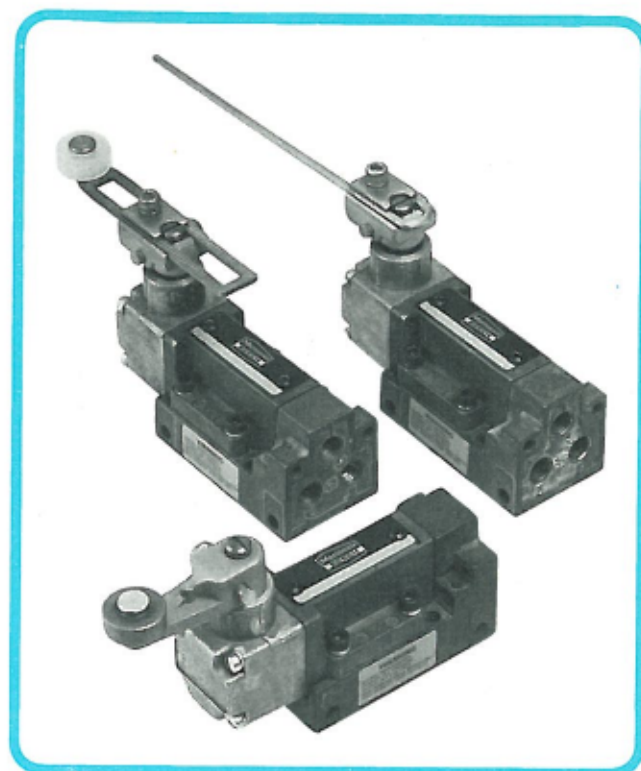
Operator torque: 0.25 Nm. full spool travel

Repeat Accuracy: $\pm 1/4^\circ$

The sub-base mounted B/LR range is a family of rugged heavy duty limit valves, employing the Beech Pneumatics stainless steel, packless floating spool and sleeve. Valve construction is of corrosion resistant aluminium, dust and splash proof. Designed to provide the ultimate in reliability versatility and trouble free life. Intended to out perform the best electrical limit switches especially under arduous wet conditions. Mechanically actuated, spring return. The operating head can be rotated into any of four positions, plus the ability to convert from a two way actuated to a one way trip in either direction. A Conduit adaptor option allows the connecting tubes to be run through a standard electrical conduit. Bottom ports have counter bores for 'O' Ring seals. Each sub-base has three different sets of mounting holes, providing a variety of mounting possibilities.

Accessories

Conduit adaptor QB/G205-100A shown in blue on dimension drawings.



Type
B/LR3/8

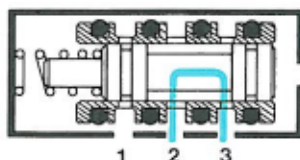
B/LR3/106
B/LR3/108

Description

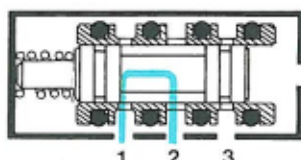
Steel roller, lever actuated, spring return

Rod antenna actuated, spring return

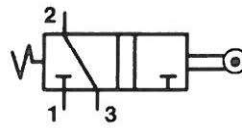
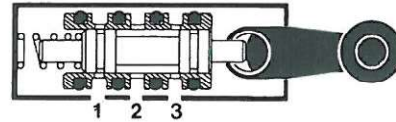
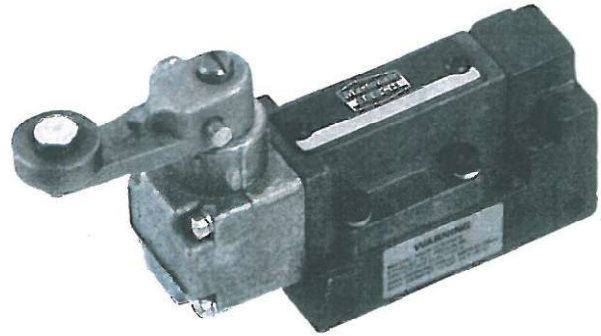
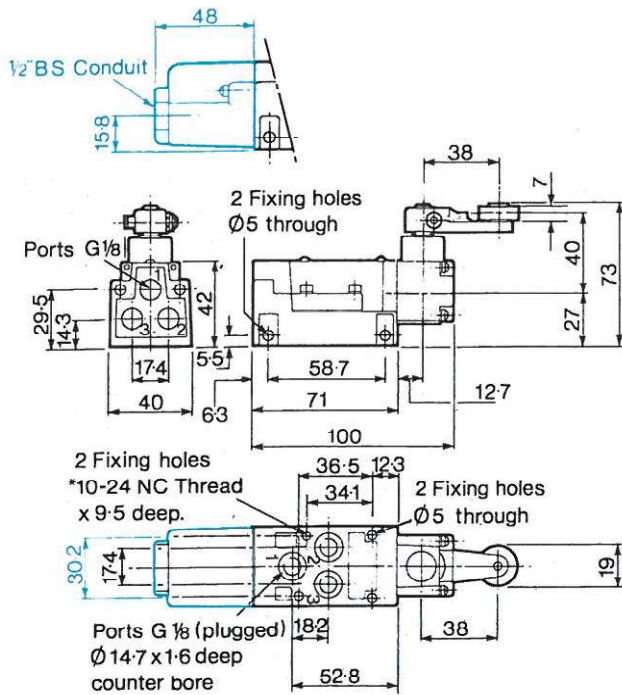
Nylon roller, adjustable lever actuated, spring return



When spool is in this position
port '2' is connected to port '3'

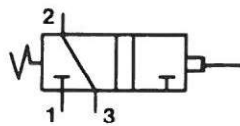
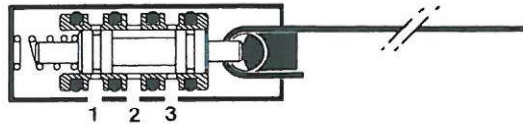
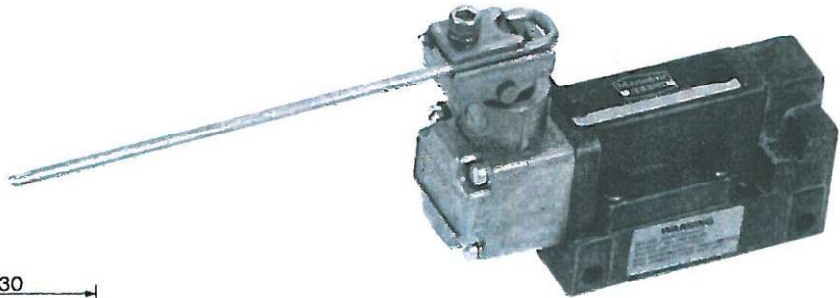
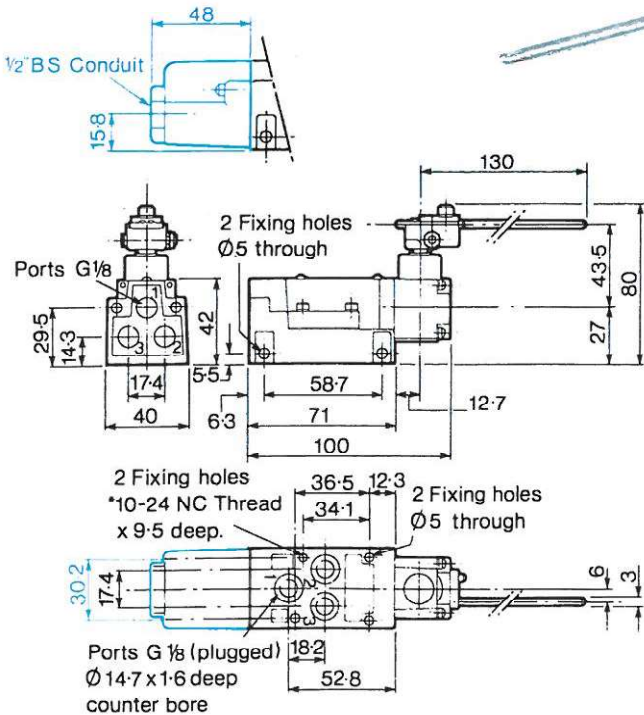


When spool is in this position
port '1' is connected to port '2'



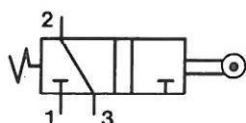
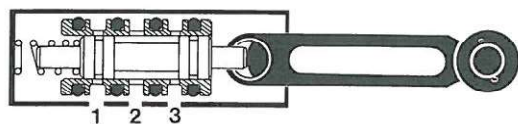
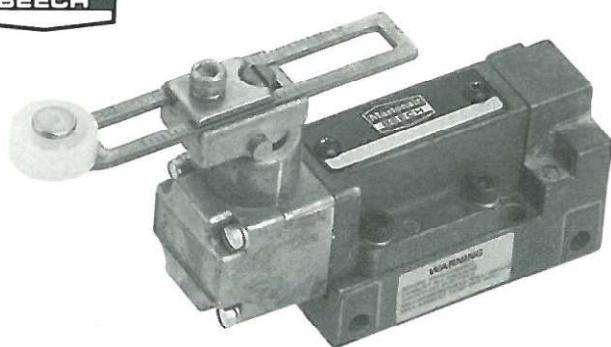
B/LR3/8

Steel roller, lever actuated, spring return



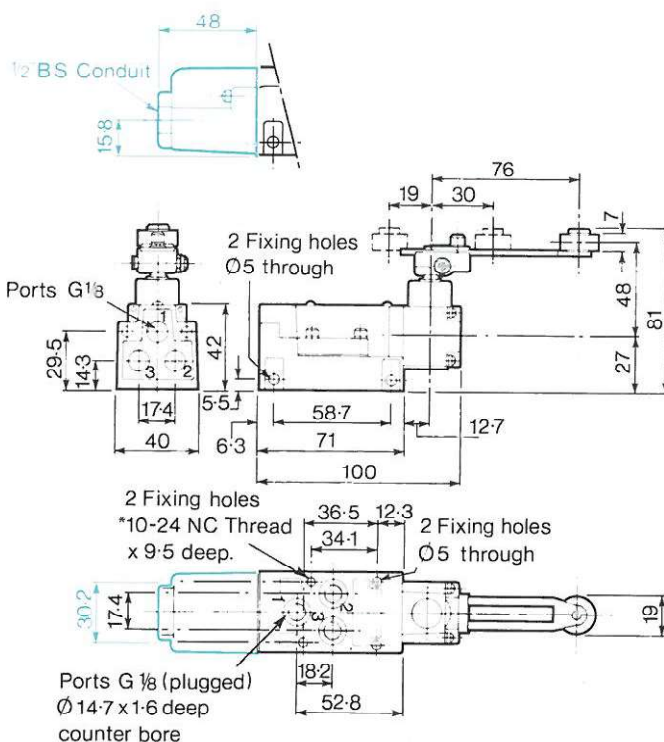
B/LR3/106

Rod antenna actuated, spring return



B/LR3/108

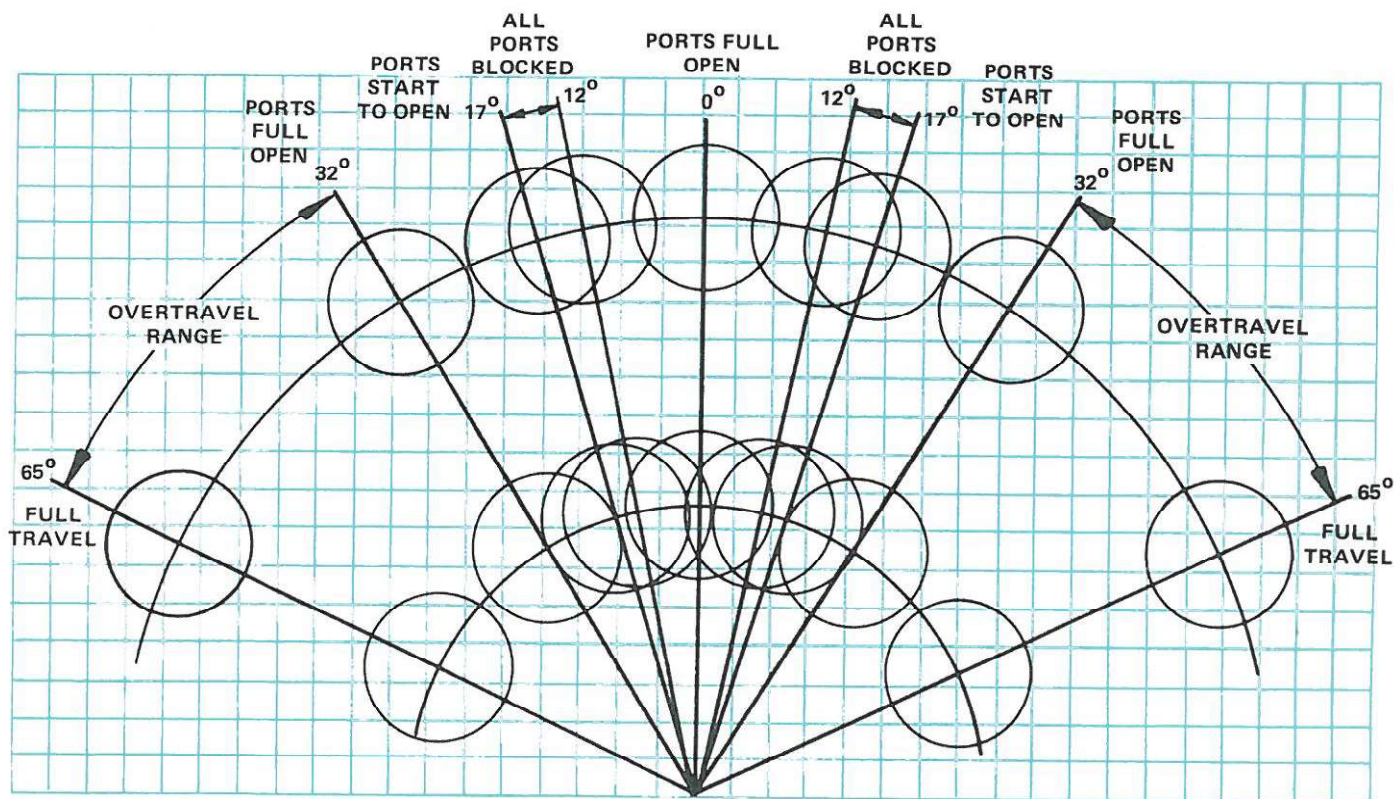
Nylon roller, adjustable lever actuated, spring return



Cam design chart

This chart is a FULL SCALE layout of the movements required to actuate a Limit Valve through the various segments of its travel, superimposed on a grid of 5mm squares. The small circles represent the 19mm diameter rollers of the standard operating levers. The inner group

of circles is the path followed by the roller of all short lever operators (38mm radius). The outer group of circles is the path followed by long lever operators (76.2mm radius).



Full size chart — 5mm square grid

Dimensions and technical information shown were correct at the time of going to Press, but due to continued improvements equipment may vary slightly from the details shown above. Certified information available on request from our Technical Sales Department

All dimensions in millimetres

7.2.41-3

Issue 1
1.3.82