

**Excelon®72
Soft Start Valves
1/4", 3/8" Port Sizes**

- **EXCELON design allows in-line or modular installation**
- **High-flow, spring return, 2 port/2 position normally closed valves**
- **Reduces rate of downstream air pressure buildup at system start up**
- **Cylinders and other air operated devices are eased into normal starting positions, reducing the possibility of equipment damage and hazards to the user.**
- **Adjustable rate of pressure increase**
- **Cushioned poppets for long service life**
- **Modular installations with EXCELON 72, 73, and 74 series can be made to suit particular applications**

Soft start valves allow a controlled increase of pressure onto downstream cylinders/machines offering protection to personnel and equipment.

Technical Data

Fluid: Compressed air

Maximum pressure: 17 bar (250 psig)

Minimum operating pressure: 3 bar (44 psig)

Temperature range*: -20° to +65°C (-0° to +150°F)

* Consult our technical service for use below +2°C (+35°F).

Ports:

PTF ports

ISO G ports

ISO Rc ports

Maximum flow with 6,3 bar (90 psig) inlet pressure and pressure drop of 0,5 bar (7 psig):

21 dm³/s (45 scfm)

Snap pressure:

Full flow when downstream pressure reaches 50 – 80% of inlet pressure

Charge time:

For 2 litre (0.53 gallon US) downstream volume and 6,3 bar (90 psig) inlet pressure

0,8 sec. minimum

76 sec. maximum

Average flow factor (Cv): 1,35

Materials:

Body: Zinc alloy

Elastomers: Synthetic materials

Internal components: Brass/steel

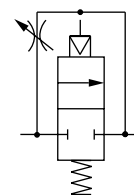
Note: Soft start valves never shut off completely, and must be installed downstream of a directional control valve such as a Norgren Poppet or Lockout Valve.



Ordering Information

See *Ordering Information* on the following pages.

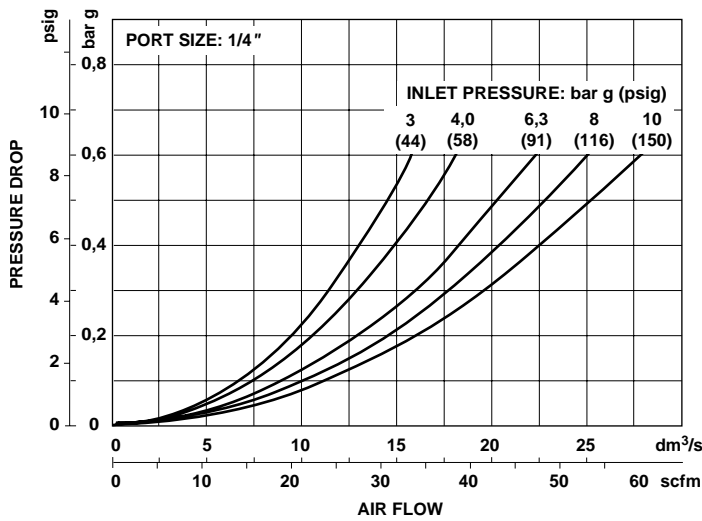
ISO Symbol



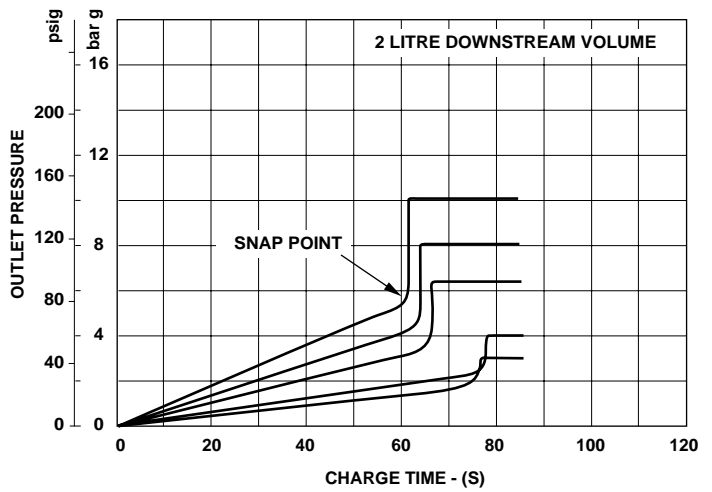


Ordering Information

FLOW CHARACTERISTICS



MAXIMUM CHARGE TIME



Ordering Information. Models listed are with ISO G threads.

Port Size	Model	Weight kg (lb)
G1/4	P72E-2GN-NNN	0,84 (1.86)
G3/8	P72E-3GN-NNN	0,82 (1.80)

* To select other solenoid type and coil voltage refer to alternative models table below.

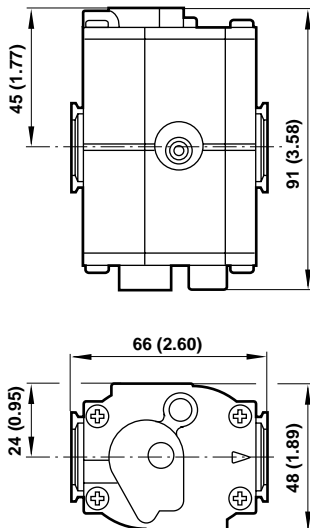
Alternative Models

P 7 2 E - ★ ★ N - N N N

Port Size	Substitute
1/4"	2
3/8"	3

Threads	Substitute
PTF	A
ISO Rc taper	B
ISO G taper	G

Dimensions



Service Kits

Item	Type	Part number
Service kit	All models	4384-520

Service kit includes all seals, valve assembly and tamper resistant plug.

Warning

These products are intended for use in industrial compressed air systems only. Do not use these products where pressures and temperatures can exceed those listed under 'Technical Data'.

Before using these products with fluids other than those specified, for non-industrial applications, life-support systems, or other applications not within published specifications, consult NORGREN.

Through misuse, age, or malfunction, components used in fluid power systems can fail in various modes. The system designer is warned to consider the failure modes of all component parts used in fluid power systems and to provide adequate safeguards to prevent personal injury or damage to equipment in the event of such failure.

System designers must provide a warning to end users in the system instructional manual if protection against a failure mode cannot be adequately provided.

System designers and end users are cautioned to review specific warnings found in instruction sheets packed and shipped with these products.

Water vapor will pass through these units and will condense into liquid if air temperature drops in the downstream system. Install an air dryer if water condensation could have a detrimental effect on the application.