

EXCELON® 72
Filter-Regulator-Lubricator Combination Units
1/4" and 3/8" Port Sizes

- **True modularity with Norgren Quikclamp™ connections**
- **Quick release bayonet bowl**
- **Lubricator flow sensor provides a nearly constant oil/air ratio over a wide range of air flows**
- **All around (360°) visibility of the lubricator sight-feed dome simplifies installation and adjustment**
- **Regulator balanced valve minimizes effect of variation in the inlet pressure on the outlet pressure**

Use Micro-Fog models in applications containing one or more points of lubrication.

Use Oil-Fog models to lubricate a single tool, cylinder, or other air driven device.

Technical Data

Fluid: Compressed air

Maximum pressure:

Transparent bowl: 10 bar (150 psig)

Metal bowl:

Manual or semi automatic drain: 17 bar (250 psig)

Automatic drain: 10 bar (150 psig)

Operating temperature*:

Transparent bowl: -20° to +50°C (0° to +125°F)

Metal bowl: -20° to +65°C (0° to +150°F)

* Air supply must be dry enough to avoid ice formation at temperatures below +2°C (+35°F).

Particle removal: 5 µm, 25 µm, or 40 µm filter element

Typical flow with 10 bar (150 psig) inlet pressure, 6,3 (90 psig) set pressure and 1 bar (15 psig) droop from set: ??? dm³/s (??? scfm)

Waiting on lab test

Manual drain connection: 1/8"

Semi automatic drain connection: Push on 8 mm (5/16") ID tube

Semi automatic drain operating conditions (pressure operated):

Bowl pressure required to close drain: Greater than 0,1 bar (1.5 psig)

Bowl pressure required to open drain: Less than 0,1 bar (1.5 psig)

Minimum air flow required to close drain: 0,5 dm³/s (1 scfm)

Manual operation: Lift stem to drain bowl

Automatic drain connection: 1/8"

Automatic drain operating conditions (float operated):

Bowl pressure required to close drain: Greater than 0,3 bar (5 psig)

Bowl pressure required to open drain: Less than 0,2 bar (3 psig)

Minimum air flow required to close drain: 0,1 dm³/s (0.2 scfm)

Manual operation: Depress pin inside drain outlet to drain bowl

Nominal bowl size:

Short bowl: 56 ml (1.9 fluid ounce)

Long bowl: 65 ml (2.2 fluid ounce)

Gauge ports:

1/8 PTF with PTF main ports

Rc1/8 with ISO Rc main ports

Rc1/8 with ISO G main ports

Recommended lubricants: See page

N/AL.8.900.935



Materials:

Body: Zinc

Bonnet: Acetal

Regulator valve: Brass

Regulator bottom plug: Acetal

Bowl:

Transparent: Polycarbonate

Transparent with guard: Polycarbonate, zinc guard

Metal: Zinc

Metal bowl liquid level indicator lens: Transparent nylon

Sight-Feed dome: Transparent nylon

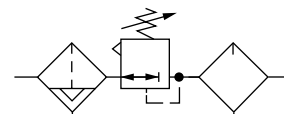
Element: Sintered polypropylene

Elastomers: Neoprene, nitrile, and Geolast®

Ordering Information

See *Ordering Information* on the following pages.

ISO Symbols



Filter with automatic drain, Regulator with relieving diaphragm, Lubricator with manual drain



Ordering information. Models listed in order table have ISO G parallel threads. Filter (F) includes a semi automatic drain, short transparent bowl without guard, and a 40µm element. Regulator (R) is relieving type with knob adjustment and a 10 bar (150 psig) regulating spring. A gauge is not included. Lubricator (L) is a Micro-Fog model with 1/4 turn manual drain and short transparent bowl without guard.

Combination Unit Type	Port Size	Model	Flow* dm ³ /s (scfm)	Weight kg (lb)
Filter-Regulator-Lubricator (F-R-L)	G1/4	C72A-2GK-ST3-RMN-QTN	?? (??) waiting on test	1,47 (3.23)
	G3/8	C72A-3GK-ST3-RMN-QTN	?? (??) waiting on test	1,47 (3.23)

* Typical flow with 10 bar (150 psig) inlet pressure, 6,3 bar (90 psig) set pressure and 1 bar (15 psig) droop from set.

Alternative Models



Shutoff/Lockout Valve, Quikmount	Substitute	Accessories	Substitute
Standard Combination (No Shutoff/Lockout Valve, no Quikmount)	C	Quikclamp wall brackets	B
With Shutoff/Lockout valve on inlet	D	No accessories	N
With Quikmount pipe adapters on inlet and outlet	E	Lubricator Reservoir	Substitute
With Shutoff/Lockout Valve on inlet and Quikmount pipe adapter on outlet	G	Short metal with liquid level indicator	D
		Short transparent without guard	T
		Long transparent without guard	L
		Long transparent with guard	W
Combination Unit Type	Substitute	Lubricator Drain	Substitute
Micro-Fog F-R-L	A	Closed bottom	E
Oil-Fog F-R-L	B	Manual, 1/4 turn	Q
Port Size	Substitute	Regulator Gauge	Substitute
1/4"	2	With gauge	G
3/8"	3	No gauge	N
Threads	Substitute	Regulation spring **	Substitute
PTF	A	0,3 to 2 bar (5 to 30 psig)	C
ISO Rc taper	B	0,3 to 4 bar (5 to 60 psig)	F
ISO G parallel	G	0,3 to 10 bar (5 to 150 psig)	M
Pressure Adjustment	Substitute	Regulator Diaphragm	Substitute
Knob	K	Non-relieving	N
T-bar	T	Relieving	R
Filter Drain	Substitute	Filter Element	Substitute
Automatic †	A	5 µm	1
Manual, 1/4 turn	Q	25 µm	2
Semi automatic	S	40 µm	3
Filter Bowl	Substitute		
Short metal with liquid level indicator	D		
Short transparent without guard	T		
Long transparent without guard	L		
Long transparent with guard	W		

** Outlet pressure can be adjusted to pressures in excess of, and less than, those specified. Do not use these units to control pressures outside of the specified ranges.

† Supplied in long bowl options only.

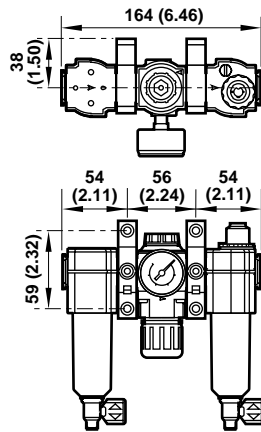
Accessories. See page N/AL.8.160.700.



Dimensions mm (inches). See pages N/AL.8.160.100, N/AL.8.160.200, N/AL.8.160.400, N/AL.8.160.600, and N/AL.8.160.700 for dimensions of individual products and the Quikclamp wall bracket.

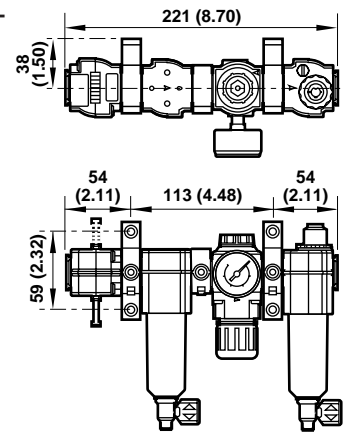
Standard Micro-Fog Type C72A-
Standard Oil-Fog Type C72B-

Shown with optional gauge and
Quikclamp wall bracket.



Alternative Micro-Fog Type D72A-
Alternative Oil-Fog Type D72B-
Includes Shutoff/Lockout valve.

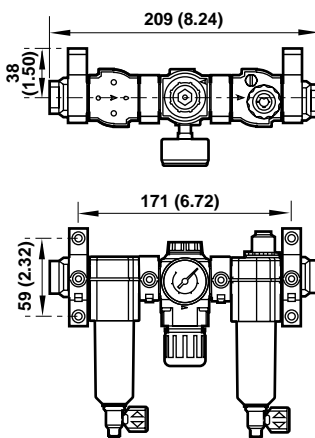
Shown with optional gauge and
Quikclamp wall brackets.



Alternative Micro-Fog Type E72A-
Alternative Oil-Fog Type E72B-

Includes Quikmount pipe adapters.

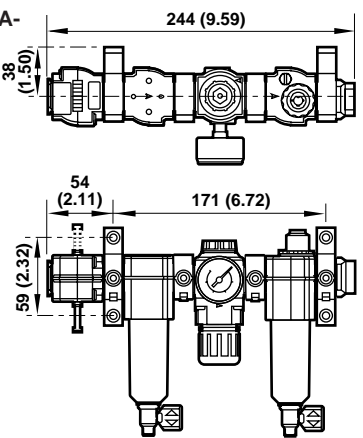
Shown with optional gauge and
Quikclamp wall brackets.



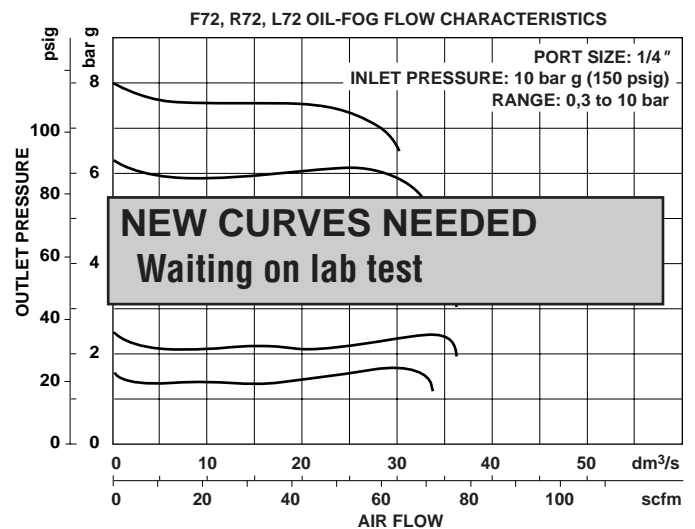
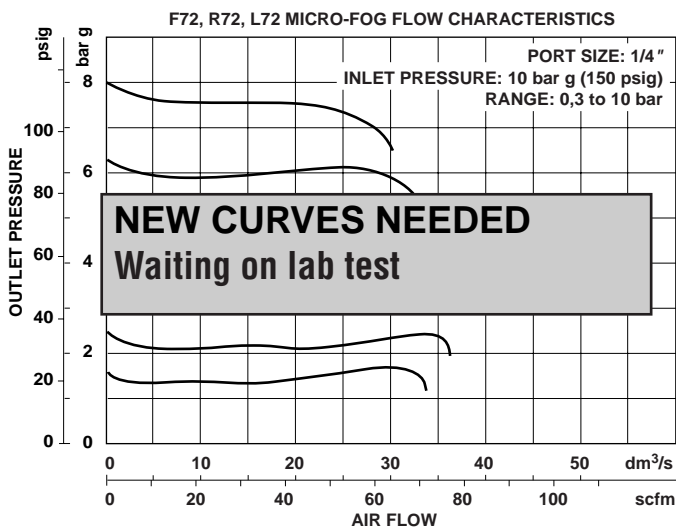
Alternative Micro-Fog Type G72A-
Alternative Oil-Fog Type G72B-

Includes Shutoff/Lockout valve
and Quikmount pipe adapter.

Shown with optional gauge and
Quikclamp wall brackets.



Typical Performance Characteristics





Warning

These products are intended for use in industrial compressed air systems only. Do not use these products where *pressures* and *temperatures* can exceed those listed under **Technical Data**.

Before using these products with fluids other than those specified, for non-industrial applications, life-support systems, or other applications not within published specifications, consult Norgren.

Through misuse, age, or malfunction, components used in fluid power systems can fail in various modes. The system designer is warned to consider the failure modes of all component parts used in fluid power systems and to provide adequate safeguards to prevent personal injury or damage to equipment in the event of such failure.

System designers must provide a warning to end users in the system instructional manual if protection against a failure mode cannot be adequately provided.

System designers and end users are cautioned to review specific warnings found in instruction sheets packed and shipped with these products.