

**Olympian
Pressure Relief Valve
3/4", 1", 1 1/4", 1 1/2", Port Sizes**

- Olympian plug in design
- Helps protect compressed air systems from over pressure by retarding excessive pressure build up
- High relief capacity, sensitive and accurate
- Integral pilot operated design, suitable for in-line or indirect mounting
- Threaded relief port for silencer or piped exhaust


Technical Data

Fluid: Compressed air

Operating temperature*:

-20° to +80°C (0° to +175°F)

* Air supply must be dry enough to avoid ice formation at temperatures below +2°C (+35°F).

Gauge ports: ISO G1/8

Exhaust port: ISO G1

Materials:

Body: Aluminium

Intermediate body: Aluminium

Bonnet: Aluminium

Bottom plug: Aluminium

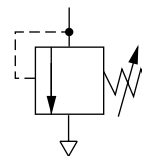
Adjusting screw: Steel

Elastomers: Synthetic rubber

Yoke: Aluminium

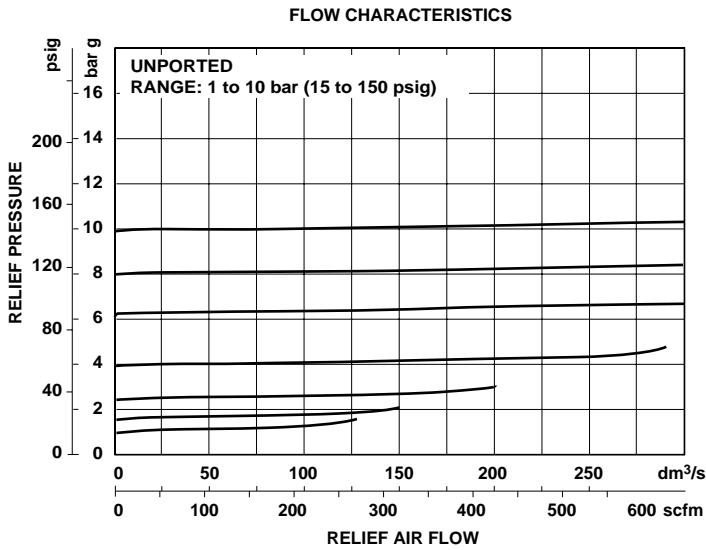
Ordering Information

See *Ordering Information* on the following pages.

ISO Symbol




Typical Performance Characteristics



Ordering Information. Models listed include ISO G threads, 1 to 10 bar (15 to 150 psig) operating adjustment range* without gauge.

Port Size	Model	Weight kg (lb)
G3/4	V15-603-NNMD	2,21 (4.91)
G1	V15-803-NNMD	2,20 (4.89)
G1 1/4	V15-A03-NNMD	2,22 (4.93)
G1 1/2	V15-B03-NNMD	2,26 (5.02)

Alternative Models

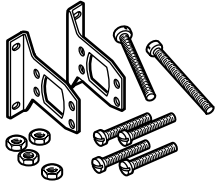

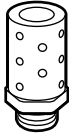
Port Size	Substitute	Thread	Substitute
3/4"	6	PTF	A
1"	8	ISO Rc taper	B
1 1/4"	A	ISO G parallel	D
1 1/2"	B		

Option	Substitute	Outlet Pressure Adjustment Range*	Substitute
Slotted screw	0 3	0,4 to 4 bar (0 to 60 psig)	F
		1 to 10 bar (15 to 150 psig)	M
		0.7 to 17 bar (10 to 250 psig)	S

Relief Pressure	Substitute	Gauge	Substitute
Not set	N	With	G
		Without	N

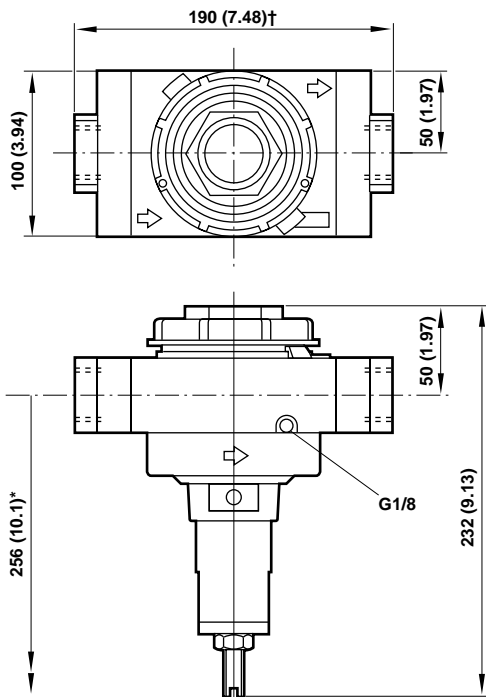
* Relief valve can be adjusted to pressures in excess of, and less than, those specified. Do not use these units to control pressures outside of the specified ranges.

Accessories

 Wall Mounting Bracket	 Ø 50 mm Pressure Gauge	 Silencer
	R1/8 Connection 1/8 PTF Connection	
G3/4 18-001-979	4 bar (60 psig): 18-013-012 18-013-202	MB008B (R1)
G1 18-001-979	10 bar (150 psig): 18-013-013 18-013-204	
G1 1/4 18-001-978	25 bar (360 psig): 18-013-014 18-013-206	
G1 1/2 N/A		



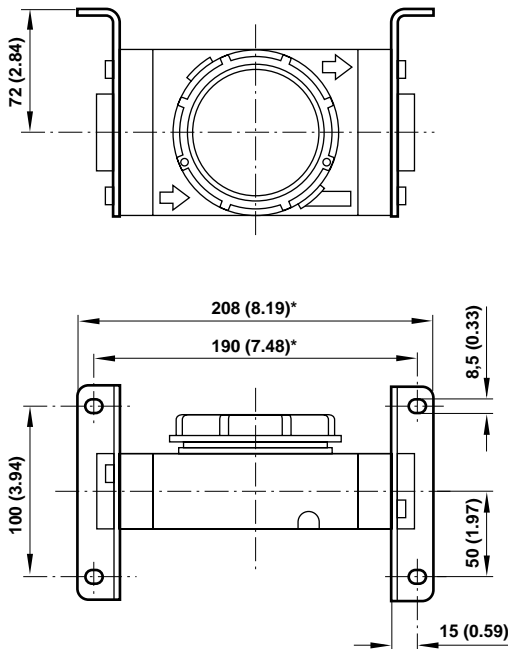
Dimensions mm (inches)



- * Minimum clearance required to remove unit.
- † 200 mm (7.87) for 1 1/4" and 1 1/2" models

Bracket Mounting

Use 4 mm (5/32") screws to mount bracket to wall.



Bracket Kit Reference

Item	Type	Part Number
Wall Bracket	3/4" model	18-001-979
	1" model	18-001-979
	1 1/4" model	18-001-978
	1 1/2" model	N/A

Service Kits

Item	Part Number
Service kit	V15-100

Service kit includes, valve spring, slip ring, valve assembly, pilot diaphragm assembly and necessary seals and o-rings.



Warning

These products are intended for use in industrial compressed air systems only. Do not use these products where pressures and temperatures can exceed those listed under "Technical Data".

Before using these products with fluids other than those specified, for non-industrial applications, life-support systems, or other applications not within published specifications, consult NORGREN.

Through misuse, age, or malfunction, components used in fluid power systems can fail in various modes. The system designer is warned to consider the failure modes of all component parts used in fluid power systems and to provide adequate safeguards to prevent personal injury or damage to equipment in the event of such failure.

System designers must provide a warning to end users in the system instructional manual if protection against a failure mode cannot be adequately provided.

System designers and end users are cautioned to review specific warnings found in instruction sheets packed and shipped with these products.

Water vapor will pass through these units and will condense into liquid if air temperature drops in the downstream system. Install an air dryer if water condensation could have a detrimental effect on the application.