

- Provides effective liquid removal and positive solid filtration
- Large filter element area for minimum pressure drop
- Automatic Drain is operated by liquid level and also opens upon depressurisation
- Spiral flange thread enables bowl to be removed quickly and easily


**Technical Data**

Medium:

Compressed air only

Maximum Pressure:

16 bar

Operating Temperature:

-20°C\* to +80°C

\*Consult our Technical Service for use below +2°C

Filter Element:

Standard - 40 µm nominal

Optional - 5 µm and 25 µm

Maximum Flow with 6,3 bar inlet pressure and pressure drop of 0,5 bar:

240 dm<sup>3</sup>/s

**Port Sizes**

G<sup>3</sup>/<sub>4</sub>, G1 to ISO 1179

Accepts ISO 228 (BS 2779) parallel or ISO 7 (BS 21) taper connectors

**Alternative Models**

Manual Drain

Other port thread forms

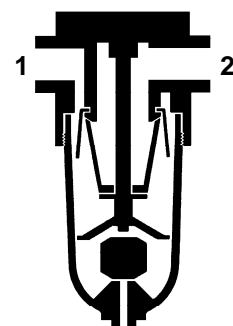
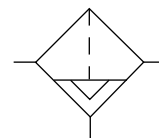
**Materials**

Aluminium alloy bowl and body. Synthetic rubber elastomeric materials. Sintered bronze filter element.

**Ordering Information**

To order a standard Filter, quote model number from tables overleaf.

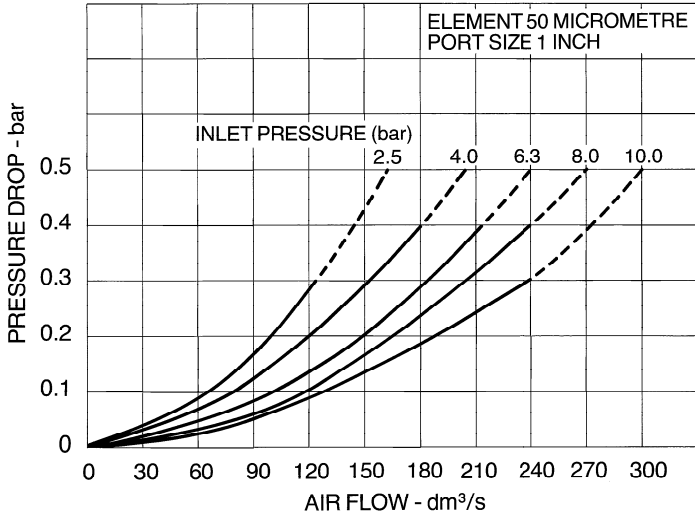
For non-standard models substitute appropriate digits as instructed.





### Typical Performance Characteristics

#### FLOW CHARACTERISTICS



### Standard Filters

Automatic Drain, 40 µm element

Type	Port Size	Model	Weight kg
Metal bowl	G <sup>3</sup> / <sub>4</sub>	F17-600-A3HD	1,60
	G1	F17-800-A3HD	1,54

Manual Drain, 40 µm element

Type	Port Size	Model	Weight kg
Metal bowl	G <sup>3</sup> / <sub>4</sub>	F17-600-M3HD	1,58
	G1	F17-800-M3HD	1,72

### Non-standard Models

For optional 5 µm and 25 µm elements, substitute '1' or '2' respectively for '3' at the 8<sup>th</sup> digit, e.g. F17-600-A1HD. For other options, please consult our Technical Service.

### Accessories

Wall Mounting Bracket Kit, see page 8.5.081.03.



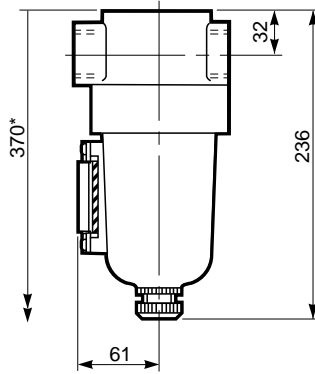
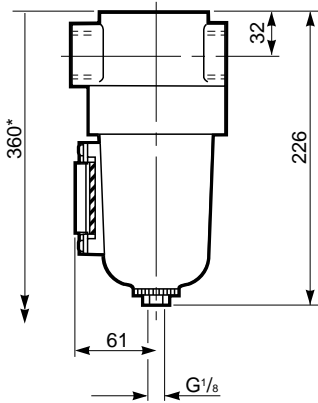
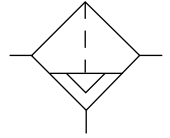
**Metal Bowl**

Automatic Drain

Manual Drain

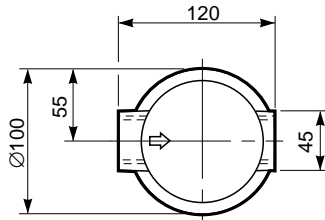
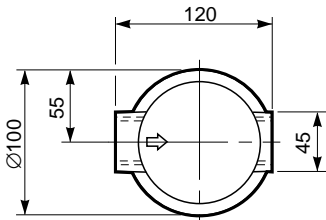
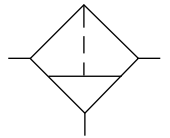
**Automatic Drain**

- F17-600-A3HD G<sup>3/4</sup>
- F17-800-A3HD G1



**Manual Drain**

- F17-600-M3HD G<sup>3/4</sup>
- F17-800-M3HD G1

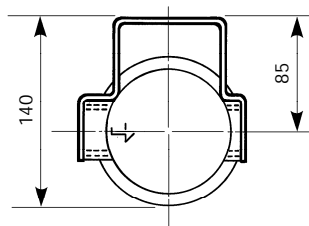
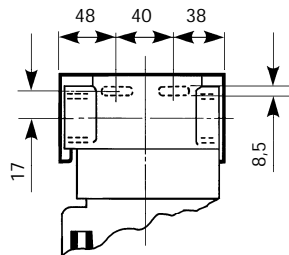


\*Minimum clearance required to remove bowl from body.

**Bracket Mounting**

**Bracket reference:**

- G<sup>3/4</sup> 18-001-960
- G1 18-001-961





## Spares Kits

Repair Kits include standard 40 µm element.  
For other elements please specify.

Drain	Gasket Kit	Repair Kit
Automatic	F17-GK	F17-100A
Manual	F17-GK	F17-100M

Repair Kit for Metal Bowl available, reference 3256-RK.

Automatic Drain Kit available, reference 3000-97. Can be used to convert Manual Drain models to Automatic Drain.

---

## Warning

These products are intended for use in industrial compressed air systems only. Do not use these products where *pressures* and *temperatures* can exceed those listed under **'Technical Data'**.

Before using these products with fluids other than those specified, for non-industrial applications, life-support systems, or other applications not within published specifications, consult NORGREN.

Through misuse, age, or malfunction, components used in fluid power systems can fail in various modes. The system designer is warned to consider the failure modes of all component parts used in fluid power systems and to provide adequate safeguards to prevent personal injury or damage to equipment in the event of such failure.

**System designers must provide a warning to end users in the system instructional manual if protection against a failure mode cannot be adequately provided.**

System designers and end users are cautioned to review specific warnings found in instruction sheets packed and shipped with these products.