

**Puraire
High Efficiency Filter
G $\frac{1}{4}$**

- Compact size, low flow unit
- Pre-filter removes dirt, coalescing element removes sub-micron particles and converts oil and water mist to liquid form to drain away
- Automatic Drain is operated by liquid level and also opens upon depressurisation
- Oil and dirt contamination in outlet air within ISO 8573.1 Quality Class 1.7.2


Technical Data

Medium:

Compressed air only

Maximum Pressure:

10 bar transparent bowl

16 bar metal bowl

Operating Temperature:

-20°C* to +50°C transparent bowl

-20°C* to +65°C metal bowl

*Consult our Technical Service for use below +2°C

Particle Removal:

0,01 µm

Maximum Remaining Oil Content:

0,01 ppm (0,01 mg/m³) at +21°C

Maximum Flow[†] with 6,3 bar inlet pressure:

6 dm³/s

[†]To maintain stated oil removal performance

Port Size

G $\frac{1}{4}$ to ISO 1179

Accepts ISO 228 (BS 2779) parallel or ISO 7 (BS 21) taper connectors

Alternative Models

Metal Bowl

Manual Drain

Other port thread forms

Materials

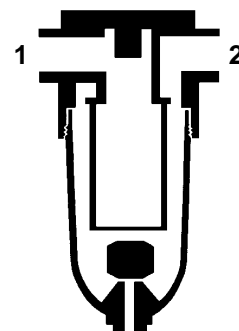
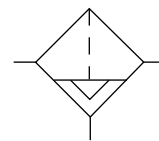
Polycarbonate bowl to BS 6005 as standard, zinc alloy bowl optional. Zinc alloy body. Synthetic rubber elastomeric materials. Composite main filter element materials. Sintered bronze pre-filter element.

Ordering Information

To order a standard Puraire Filter, quote model number from tables overleaf.

For non-standard models please consult our Technical Service.

It is recommended that an appropriate pre-filter be fitted upstream of these units to remove coarse contaminants.





Typical Performance Characteristics

Flow Characteristics

INLET PRESSURE bar	MAXIMUM FLOW dm ³ /s
1	2,4
3	4,0
5	5,3
6,3	6,0
7	6,3
9	7,2

Standard Puraire Filters

Automatic Drain

Type	Port Size	Model	Weight kg
Transparent Polycarbonate bowl	G $\frac{1}{4}$	F42-201-L0TD	0,53
Metal bowl	G $\frac{1}{4}$	F42-201-L0MD	0,67

Manual Drain*

Type	Port Size	Model	Weight kg
Transparent Polycarbonate bowl	G $\frac{1}{4}$	F42-201-M0TD	0,50

*Manual Drain Puraire Filters are not recommended in service where plant maintenance is irregular. Consult our Technical Service for further details.

Non-standard Models

For other options, please consult our Technical Service.

Accessories

Wall Mounting Bracket Kit, see page 8.5.151.04.

Bowl Guard Kits for standard Transparent bowls, reference 18-012-985 for Automatic Drain models or 18-012-984 for Manual Drain models.



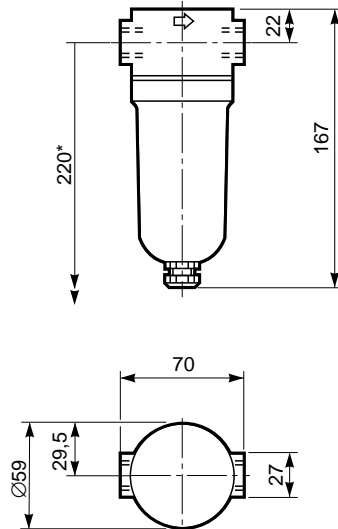
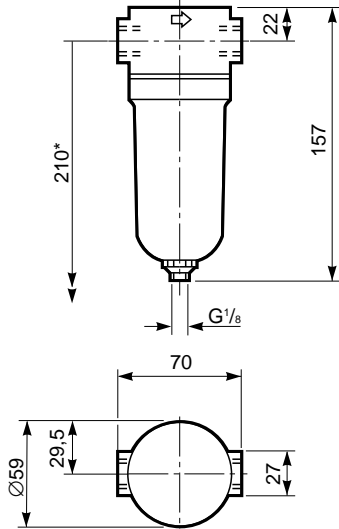
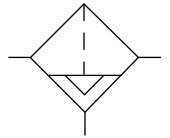
Transparent Polycarbonate Bowl

Automatic Drain

Manual Drain

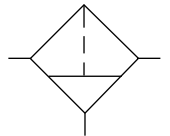
Automatic Drain

F42-201-L0TD G¹/₄



Manual Drain

F42-201-M0TD G¹/₄



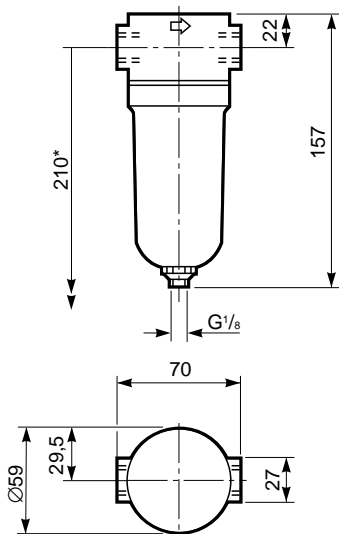
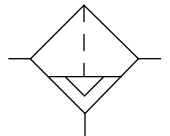
*Minimum clearance required to remove bowl from body.

Metal Bowl

Automatic Drain

Automatic Drain

F42-201-L0MD G¹/₄

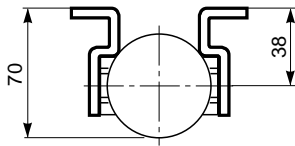
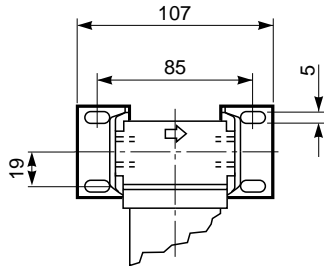


*Minimum clearance required to remove bowl from body.



Bracket Mounting

Bracket Kit reference:
18-001-984



Spares Kits

Type	Gasket Kit	Service Kit†
All models	F42-GK	F42-100

Automatic Drain Kit available, reference 3000-09. Can be used to convert Manual Drain models to Automatic Drain.

†Service Kit includes Gasket Kit and Filter Element.

Warning

These products are intended for use in industrial compressed air systems only. Do not use these products where *pressures* and *temperatures* can exceed those listed under **‘Technical Data’**.

Before using these products with fluids other than those specified, for non-industrial applications, life-support systems, or other applications not within published specifications, consult NORGREN MARTONAIR.

Through misuse, age, or malfunction, components used in fluid power systems can fail in various modes. The system designer is warned to consider the failure modes of all component parts used in fluid power systems and to provide adequate safeguards to prevent personal injury or damage to equipment in the event of such failure.

System designers must provide a warning to end users in the system instructional manual if protection against a failure mode cannot be adequately provided.

System designers and end users are cautioned to review specific warnings found in instruction sheets packed and shipped with these products.