


## P82C 3/2 Control Valve Excelon® Plus Modular System

- Port size:  
1/4" ... 3/8" (ISO G/PTF)
- Excelon® Plus design allows in-line installation or modular installation with other Excelon® Plus products
- High forward flow capacity
- Fast Exhausting
- 3 port/2 position valve, normally closed
- Solenoid and air pilot options
- For use as components in safety-related systems according to DIN EN ISO13849 up to a Performance Level (PL)c Cat. 1  
Safety function: Safe Venting.
-  DoC in accordance with 2014/34/EU/ATEX



### Technical features

**Medium:**  
Compressed air only

**Maximum supply pressure:**  
10 bar (145 psi)

**Minimum operating pressure:**  
3 bar (43 psi)

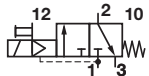
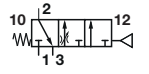
**Port size:**  
G1/4, G3/8,  
1/4 PTF, 3/8 PTF

**Flow:**  
20 dm³/s at port size 1/4"  
Full flow P1 to P2 at 6,3 bar (91 psi)  
inlet, with 0,5 bar (7 psi) pressure  
drop P2 to P3 = 20 dm³/s

**Ambient/Media temperature:**  
-20 ... +65°C (-4 ... +149°F)  
Air supply must be dry enough to avoid  
ice formation at temperatures below  
+2°C (+35°F)

**Materials:**  
Body: Aluminium  
End Caps: Aluminum  
Body covers: ABS  
Elastomers: NBR  
Valve: Brass  
Air Pilot: Aluminium

### Technical data P82C

Symbol	Port Size	Actuating/return	Voltage	Exhaust Port	Weight (kg)	Model
	G1/4	Solenoid/spring	24 V d.c.	G1/4	0,43	P82C-2GT-PFN
	G3/8	Solenoid/spring	24 V d.c.	G1/4	0,43	P82C-3GT-PFN
	G1/4	Air/spring	N/A	G1/4	0,43	P82C-2GA-NNN
	G3/8	Air/spring	N/A	G1/4	0,43	P82C-3GA-NNN

### Electrical details for solenoid operators

<b>Voltage tolerance:</b>	-10%/+15%
<b>Rating:</b>	100% continuous duty
<b>Inlet orifice:</b>	0,8mm
<b>Electrical connection:</b>	15mm DIN EN 175301-803 (DIN 43650) Form C
<b>Manual override:</b>	Shrouded push button, spring return
<b>Protection class:</b>	IP65
<b>Materials:</b>	PP5 (body), NBR (seals)

## Option selector

P82C-★-★-★-★-★N

Function	Substitute
3/2 Control Valve	C
Port Size	Substitute
1/4"	2
3/8"	3
Thread Form	Substitute
PTF	A
ISO G	G

Voltage	Substitute
24 V d.c.	F
110 V a.c.	A
220 V a.c.	B
Non	N
Solenoid Operator	Substitute
Non-Locking push button	P
Non	N
Operator *2)	Substitute
Air pilot*1)	A
Solenoid Operated	T

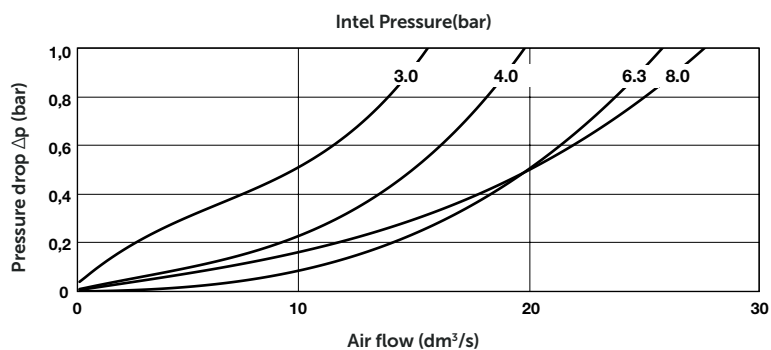
\*1) To order air pilot models, select P82C-\*\*A-NNN

\*2) ATEX statement can be found online  
[https://cdn.norgren.com/pdf/IM\\_Excelon\\_Plus\\_EN\\_final.pdf](https://cdn.norgren.com/pdf/IM_Excelon_Plus_EN_final.pdf)

## Flow characteristics

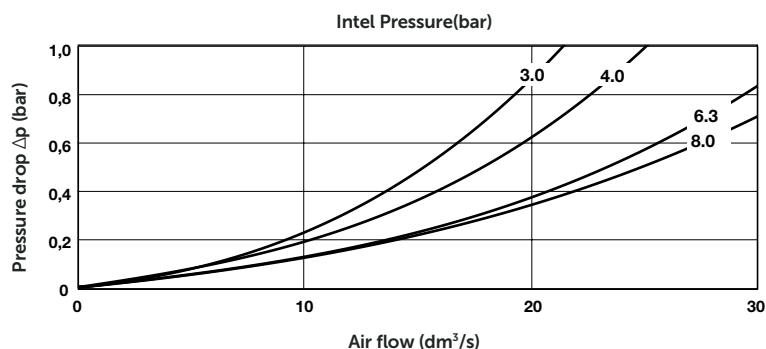
Port 1 to 2

Port size: 1/4"



Port 1 to 2

Port size: 3/8"



## Accessories

Connection cable with plug, LED and M12 Female



Description	Cable length (m)	Model
PUR-Cable; M12/ valve type C DIN connector	0,6	NC-DINCA-123MS-A
	1	NC-DINCA-123MS-1
	2	NC-DINCA-123MS-2
	5	NC-DINCA-123MS-5

Plug with with moulded cable and indicator



Voltage	Cable length (m)	Model
12 - 24 V a.c. / d.c	1	V10014-D01
12 - 24 V a.c. / d.c	3	V10014-D03
110 V a.c. / d.c.	1	V10015-D01
110 V a.c. / d.c.	3	V10015-D03
220 V a.c. / d.c	1	V10016-D01
220 V a.c. / d.c	3	V10016-D03

Plug with moulded cable



Description	Cable length (m)	Model
3 pin plug with moulded cable	1	V10013-D01
3 pin plug with moulded cable	3	V10013-D03

Light Emitting Seals ,15mm form C



Description	Model
Light Emitting Seals Circuit A (12 - 24 V d.c.)	V10037-E13
Light Emitting Seals Circuit B (110 - 120 V a.c.)	V10037-E18
Light Emitting Seals Circuit B (220 - 240 V a.c.)	V10037-E19

Plug with cable gland and indicator



Description	Model
Plug with cable gland and indicator 12-24 V a.c. / d.c., c/w LED / VDR	V10012-D13
Plug with cable gland and indicator 110 V a.c. / d.c., c/w LED / VDR	V10012-D18
Plug with cable gland and indicator 220 V a.c. / d.c., c/w LED / VDR	V10012-D19

M12 Adaptor Top - MSUP Valve Plug Form C 8MM



V13981-E01

M12 Adaptor Rear - MSUP Valve Plug Form C 8MM



V13980-E01

Plug with cable gland



V10027-D00

## Accessories

Quikclamp



Page 5

820014-51KIT

Quikclamp  
with bracket assembled



Page 5

820014-52KIT

Pressure sensing block  
1/4 PTF



Page 5

820016-50KIT

Pressure sensing block  
G1/4



Page 5

820016-51KIT

Full flow porting block  
3/8" PTF



Page 5

820028-50KIT

Full flow porting block  
G3/8



Page 5

820028-53KIT

Pressure switch interface block  
(18D pressure switch)



Page 6

0523109000000000

Pneumatic pressure switch  
18D (0,5 ... 8 bar) \*1)



Page 6

0881300

Digital pressure switch  
51D (-1 ... 10 bar) \*2)



Page 7

0860810

\*1) Flanged version. For other pressure ranges, please see data sheet 5.11.001

\*2) For other pressure ranges, please see data sheet 5.11.385

Port Adaptors  
1/4 PTF



Page 6

820015-02KIT

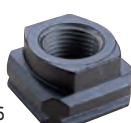
Port Adaptors  
3/8 PTF



Page 6

820015-03KIT

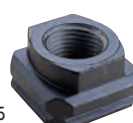
Port Adaptors  
G1/4



Page 6

820015-08KIT

Port Adaptors  
G3/8



Page 6

820015-09KIT

## Silencer

Heavy duty muffler, 1/4" NPT  
male thread, brass wire element






MB002A

Heavy duty muffler, R1/4 male  
thread, brass wire element



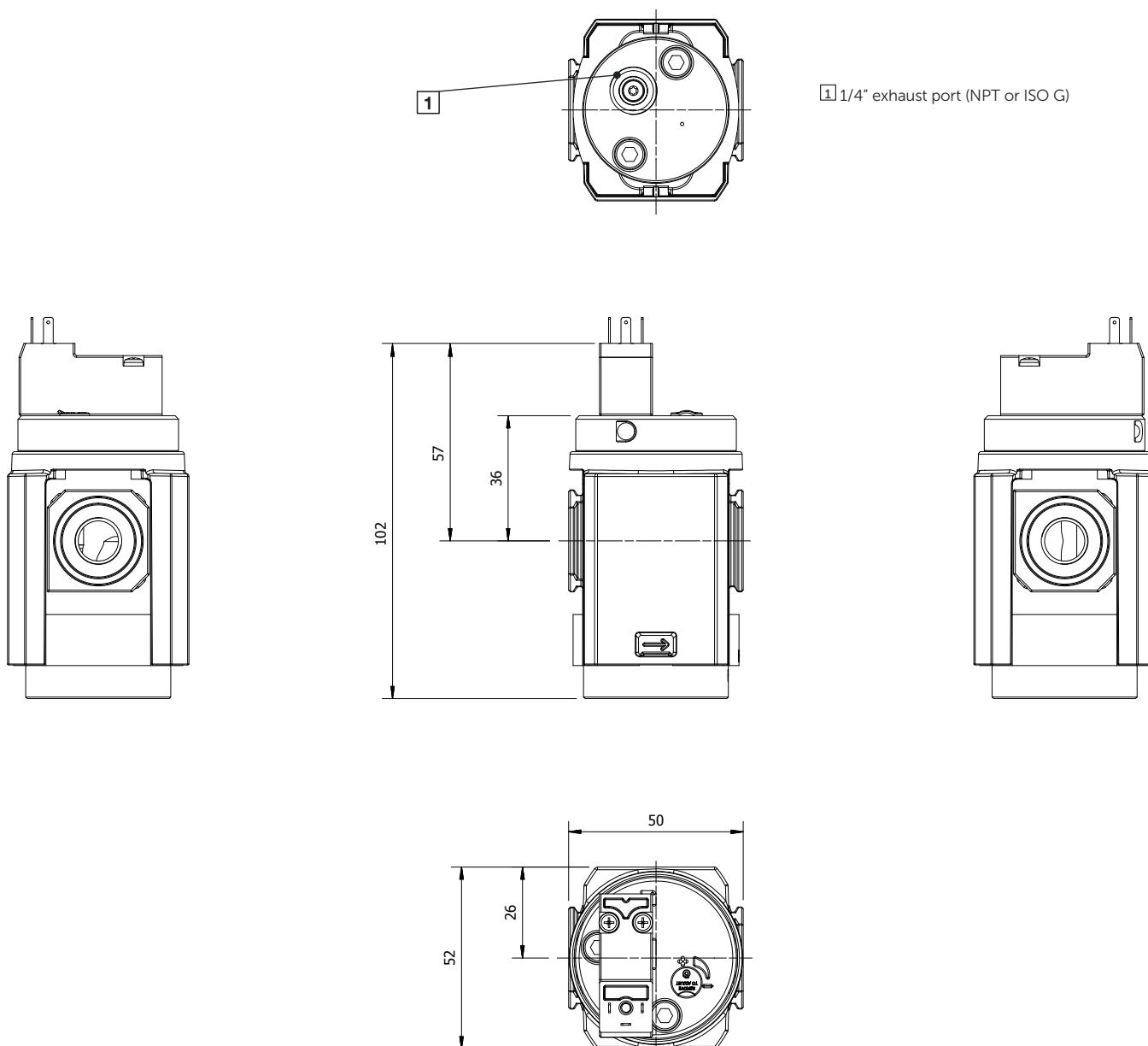
MB002B

## Voltage rating and spare coils

	Voltage	Power	Replacement
	24 V d.c.	1,2 W	840650-50KIT
	110 V a.c.	1,5 VA	840650-51KIT
	220 V a.c.	1,5 VA	840650-52KIT

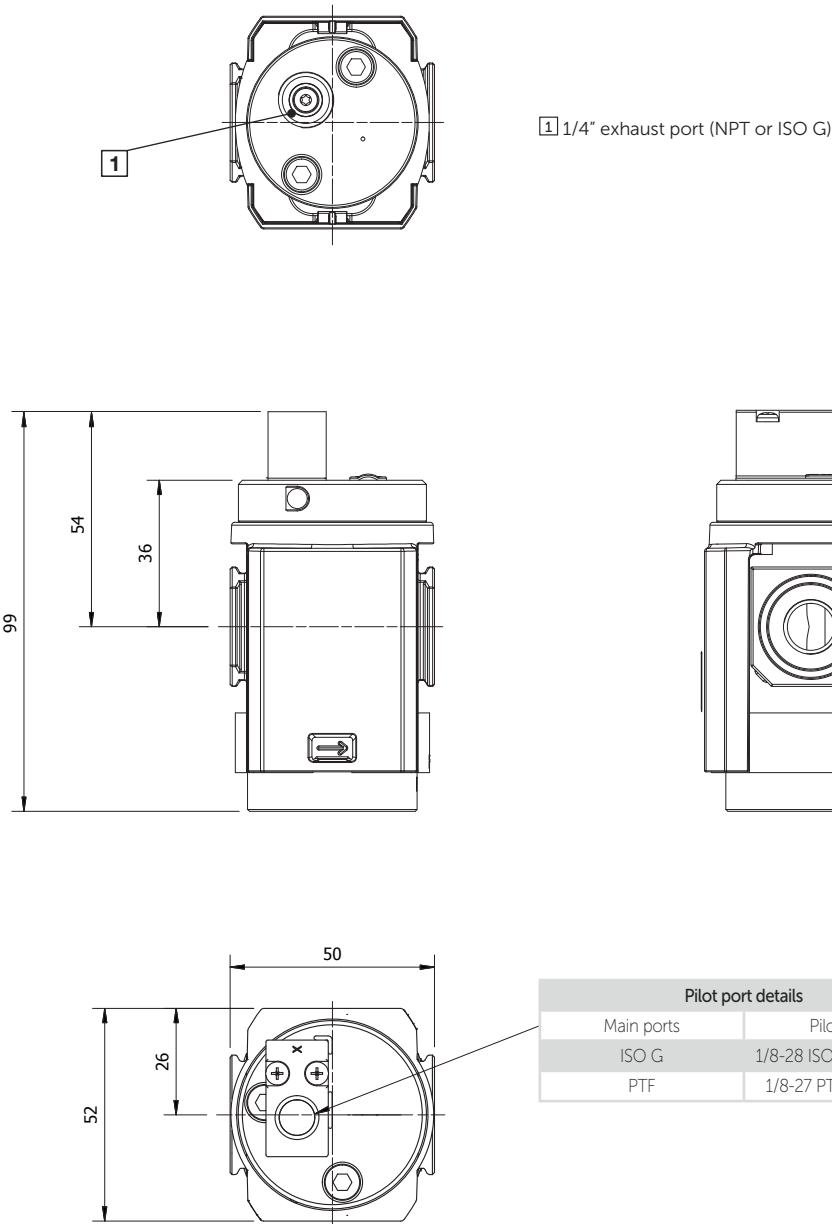
## Dimensions

Dimensions in mm  
Projection/First angle



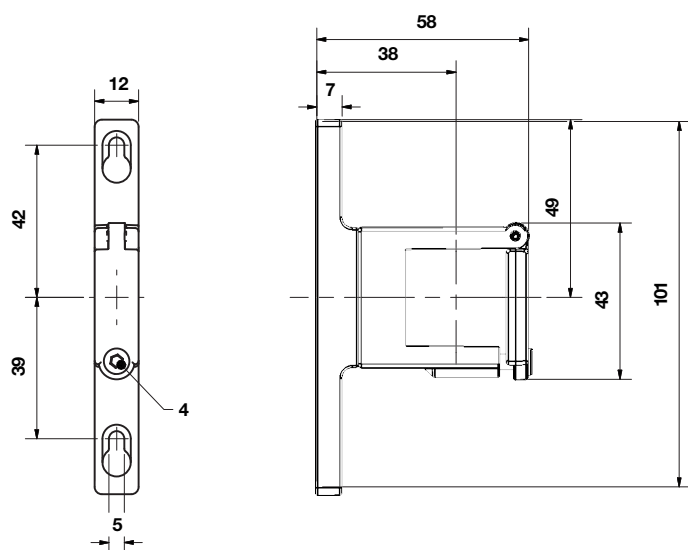
Dimensions  
Air Pilot Operator

Dimensions in mm  
Projection/First angle



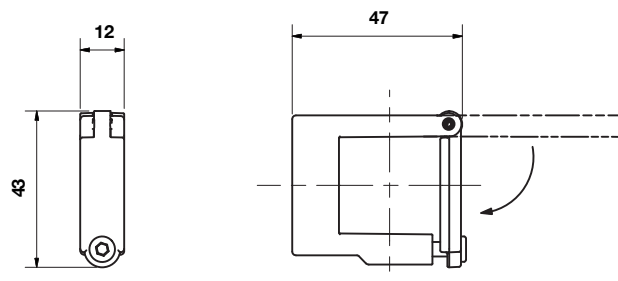
## Accessories

### Quikclamp with wall bracket

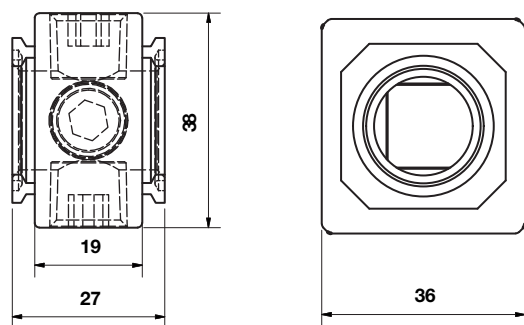


### Quikclamp

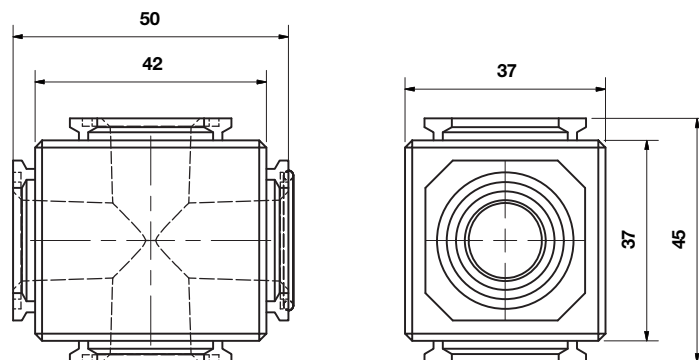
Dimensions in mm  
Projection/First angle



### Pressure sensing block



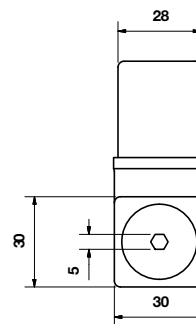
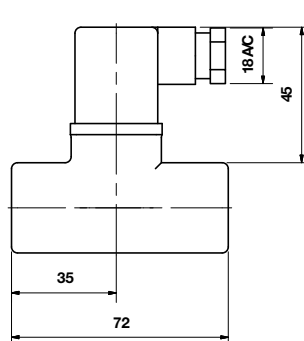
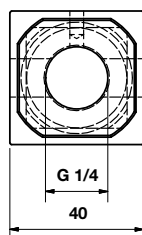
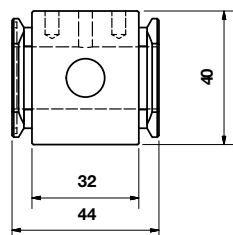
### Full flow porting block



## Porting block for 18D pressure switch

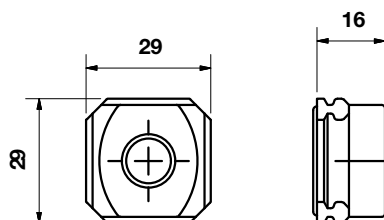
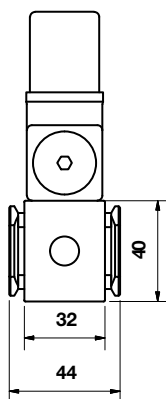
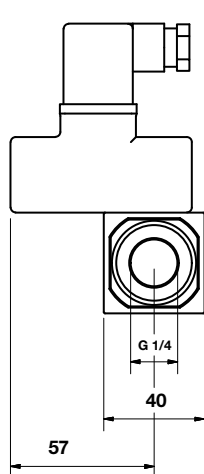
## 18D Pressure switch

Dimensions in mm  
Projection/First angle

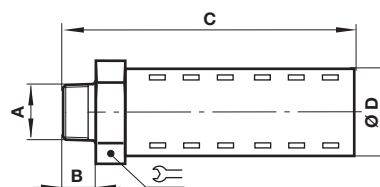


## 18D Porting block and 18D assembled

## Pipe adaptor



## Silencer

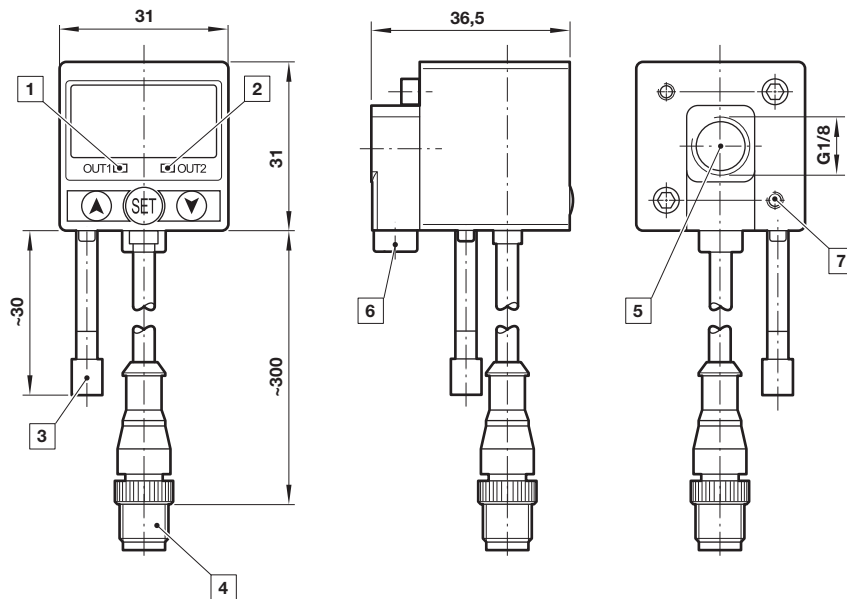


A	B	C	D		Model
R1/4	17	92	32	32	MB002B
1/4 NPT	17	92	32	32	MB002A



## 51D Pressure switch - digital

Dimensions in mm  
Projection/First angle



- 1 Switch OUT 1, green LED
- 2 Switch OUT 2, red LED
- 3 Dustproof protector
- 4 Connector M12 x 1
- 5 Inlet port
- 6 Alternative inlet port G1/8 plugged
- 7 Thread for mounting screw

## Warning

These products are intended for use in industrial compressed air systems only. Do not use these products where pressures and temperatures can exceed those listed under **»Technical features/data«**. Before using these products with fluids other than those specified, for non-industrial applications, life-support systems or other applications not within published specifications, consult Norgren Ltd. Through misuse, age, or malfunction, components used in fluid power systems can fail in various modes.

The system designer is warned to consider the failure modes of all component parts used in fluid power systems and to provide adequate safeguards to prevent personal injury or damage to equipment in the event of such failure. System designers must provide a warning to end users in the system instructional manual if protection against a failure mode cannot be adequately provided. System designers and end users are cautioned to review specific warnings found in instruction sheets packed and shipped with these products.