

- > **Port size: 1/4" or 3/8" (ISO G/PTF)**
- > **Excelon design allows in-line or modular installation**
- > **Manifold typically up to six regulators without booster signal**
- > **Balanced valve design for optimum pressure control**
- > **Push to lock adjusting knob with optional tamper resistant accessory**



### Technical features

#### Medium:

Compressed air only

#### Maximum operating pressure:

20 bar (300 psi)

#### Two inlet ports:

G1/4 or G3/8 ISO G

1/4 or 3/8 PTF

#### One outlet port:

G1/4

1/4 PTF

#### One gauge port:

Rc 1/8 with ISO G main ports

1/8 PTF with PTF main ports

#### Flow:

39 dm<sup>3</sup>/s

At port size: 1/4"

Inlet pressure 10 bar (145 psi);

6,3 bar (91 psi) set pressure and a

$\Delta p$ : 1 bar (14,5 psi) droop from set.

#### Ambient/Media temperature:

-34 ... +65°C (-30 ... +149°F)

Air supply must be dry enough

to avoid ice formation at

temperatures below +2°C (+35°F).

#### Materials:

Body: Zinc

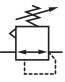
Bottom plug: Acetal

Bonnet: Acetal

Valve: PP and TPV

Elastomers: NBR

### Technical data - standard models - with diaphragm

Symbol	Inlet port (2)	Outlet port (1)	Size	Pressure range (bar)	Adjustment	Weight (kg)	Model
	G1/4	G1/4	Basic	0,3 ... 10	Knob	0,36	R72M-2GK-RMN
	G3/8	G1/4	—	0,3 ... 10	Knob	0,36	R72M-3GK-RMN

### Option selector

Port size	Substitute
1/4"	2
3/8"	3
Thread form	Substitute
PTF	A
ISO G parallel	G

R72M-★ ★ K-★ ★ ★

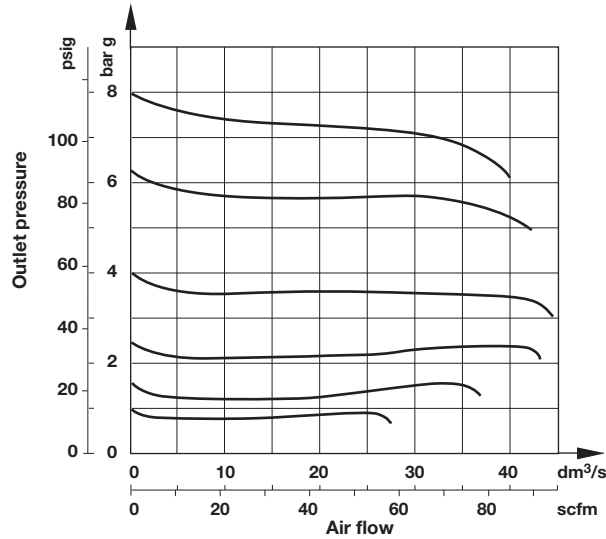
Gauge	Substitute
With	G
Without (standard)	N
Outlet pressure adjustment range *2)	Substitute
0,3 ... 2 bar	C
0,3 ... 4 bar	F
0,3 ... 10 bar (standard)	M
Diaphragm	Substitute
Relieving (standard)	R
Non relieving	N

\*2) Outlet pressure can be adjusted to pressures in excess of, and less than, those specified. Do not use these units to control pressures outside of the specified ranges.

**Flow characteristics**

Port size: 3/8"

Inlet pressure: 10 bar (145 psi)



**Accessories**

<p><b>Universal mounting bracket</b></p> <p>Page 4</p> <p>4224-50</p>	<p><b>Quikclamp®</b></p> <p>Page 3</p> <p>4214-51</p>	<p><b>Quikclamp with wall bracket®</b></p> <p>Page 3</p> <p>4214-52</p>	<p><b>Neck mounting bracket</b></p> <p>Page 4</p> <p>74316-50</p>	<p><b>Panel nut</b></p> <p>4248-89</p>
<p><b>Tamper resistant kit</b></p> <p>4255-51</p>	<p><b>Quikmount pipe adaptor *1)</b></p> <p>Page 3</p> <p>G1/4: 4215-08 G3/8: 4215-09 1/4 PTF: 4215-02 3/8 PTF: 4215-03</p>	<p><b>Porting block with three alternative 1/4" ports</b></p> <p>Page 3</p> <p>G1/4: 4216-52 1/4 PTF: 4216-50</p>	<p><b>2/2 Shut-off valves (for full technical specification see datasheet 8.160.600)</b></p> <p>Page 4</p> <p>G1/4: T72B-2GA-P1N G3/8: T72B-3GA-P1N 1/4 PTF: T72B-2AA-P1N 3/8 PTF: T72B-3AA-P1N</p>	<p><b>3/2 Shut-off valves (for full technical specification see datasheet 8.160.600)</b></p> <p>Page 4</p> <p>G1/4: T72T-2GA-P1N G3/8: T72T-3GA-P1N 1/4 PTF: T72T-2AA-P1N 3/8 PTF: T72T-3AA-P1N</p>

\*1) Please use a Quikmount pipe adaptor if the Quikclamp be mounted at inlet or outlet side.

**Pressure switch**

Porting block for pressure switch



0523109000000000

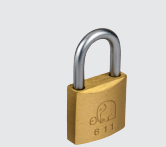
Pressure switch (0,5 ... 8 bar)



0881300000000000

**Padlock**

Padlock (brass) with two keys \*1)



0613633000000000

\*1) for shut-off valves and tamper resistant kit

**Service kit**

Service kit



R72G-KITR

**Gauge**

Bottom connection, black face (for full technical specification see datasheet 8.900.900)



Pressure range psig *1) bar	MPa	Ø	Thread size	Model
0 ... 58 0 ... 4	0 ... 0,4	40 mm	R1/8	18-015-277
0 ... 145 0 ... 10	0 ... 1	40 mm	R1/8	18-015-279

\*1) primary scale

Bottom connection, black face for North America (for full technical specification see datasheet 8.900.900) Pressure range

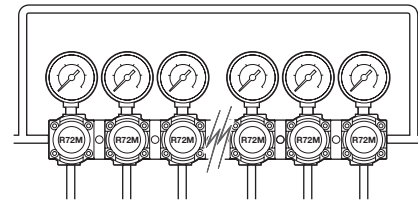
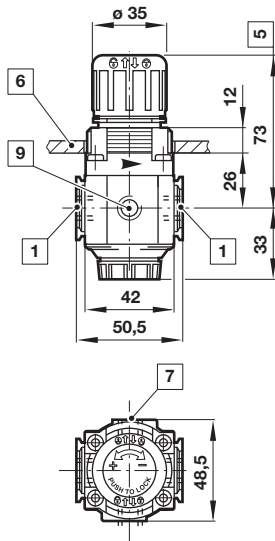


psig *1) bar	MPa	Ø	Thread size	Model
0 ... 30 0 ... 2	0 ... 0,2	1.5" (40 mm)	1/8 NPT	18-015-224
0 ... 60 0 ... 4	0 ... 0,4	1.5" (40 mm)	1/8 NPT	18-015-225
0 ... 160 0 ... 11	0 ... 1,1	1.5" (40 mm)	1/8 NPT	18-015-273

\*1) primary scale

**Drawings**

Dimensions in mm  
 Projection/First angle



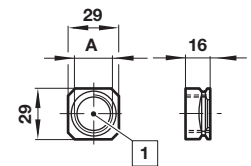
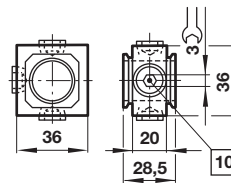
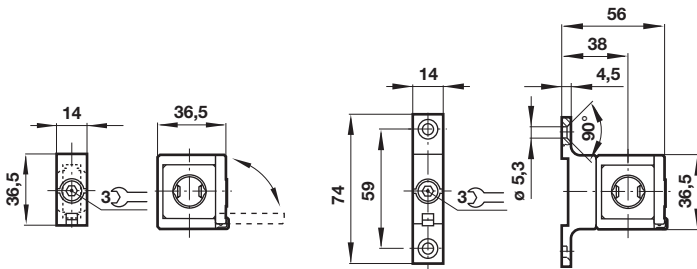
- 1 Main ports 1/4" or 3/8"
- 5 Reduces by 4 mm with knob in locked position
- 6 Panel thickness 0 ... 4 mm
- 7 Gauge port Rc1/8 or 1/8 PTF plugged
- 9 Outlet port 1/4"

**Accessories**  
**Quikclamp®**

**Quikclamp® with wall bracket**

**Porting block**

**Pipe adapter**



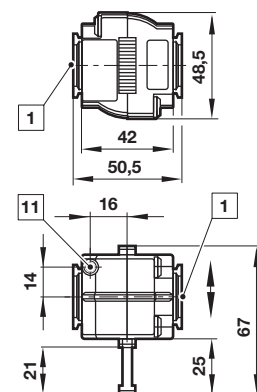
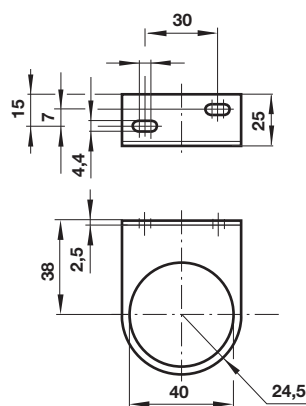
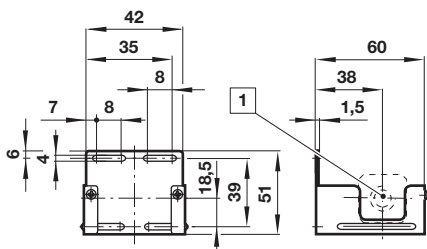
- 10 Ports (G1/4 or 1/4 NPT) plugged

- 1 Main ports 1/4" or 3/8" ISO G/PTF

**Wall mounting bracket**

**Neck mounting bracket**

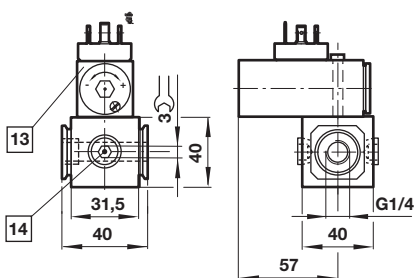
**Shut-off valves**



- 1 Main ports

**Porting block for pressure switch**

- 1 Main ports 1/4" or 3/8" ISO G/PTF
- 11 Exhaust port M5 at 3/2 valve only



- 13 Pressure switch is not in scope of delivery
- 14 Alternative G1/4 ports plugged

## Warning

These products are intended for use in industrial compressed air systems only. Do not use these products where pressures and temperatures can exceed those listed under

»**Technical features/data**«.

Before using these products with fluids other than those specified, for non-industrial applications, life-support systems or other applications not within published specifications, consult IMI Precision Engineering, Norgren GmbH.

Through misuse, age, or malfunction, components used in fluid power systems can fail in various modes.

The system designer is warned to consider the failure modes of all component parts used in fluid power systems and to provide adequate safeguards to prevent personal injury or damage to equipment in the event of such failure.

System designers must provide a warning to end users in the system instructional manual if protection against a failure mode cannot be adequately provided.

System designers and end users are cautioned to review specific warnings found in instruction sheets packed and shipped with these products.