

## P72F - EXCELRON® Modular System Soft start/dump valves

- Port size: 1/4" or 3/8" (ISO G/NPT)
- Assists machine designers in complying with the European Machineries Directive
- Excelon design allows in-line installation or modular installation with other Excelon products
- Can help existing machinery to comply with PUWER (Provision and Use of Work Equipment Regulations)
- Controlled increase of downstream pressure on start up
- High forward flow capacity
- High flow dump facility



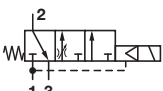
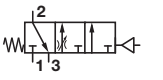
### Technical features

<p><b>Medium:</b> Compressed air only</p> <p><b>Operating pressure:</b> 17 bar (250 psi) pilot actuated 10 bar (145 psi) solenoid actuated</p> <p><b>Minimum operating pressure:</b> 3 bar (44 psi)</p> <p><b>Snap pressure:</b> Full flow when downstream pressure reaches 50 – 80% of inlet pressure</p> <p><b>Port size:</b> G1/4, G3/8, 1/4" or 3/8" PTF</p> <p><b>Air pilot port:</b></p>	<p><b>M5 with ISO G main ports</b> <b>10-32 UNF with PTF main ports</b></p> <p><b>Exhaust port:</b> Rc1/4 with ISO G main ports 1/4 PTF with PTF main ports</p> <p><b>Charge time:</b> For 2 litre downstream volume and 6,3 bar (90 psi) inlet pressure 0,8 sec. minimum 99 sec. maximum</p> <p><b>Flow:</b> 21 dm<sup>3</sup>/s at port size: G1/4 Operating pressure: 6,3 bar (91 psi) Δp: 0,5 bar (7 psi) P1 to P2 = Cv 1,59 P2 to P3 = Cv 1,72</p>	<p><b>Ambient/Media temperature:</b> Solenoid actuated: -20° ... +50°C (-4° ... +122°F) Pilot actuated: -20° ... +65°C (-4° ... +149°F) Air supply must be dry enough to avoid ice formation at temperatures below +2°C (+35°F).</p>	<p><b>Materials:</b> Body: Zinc alloy Elastomers: Synthetic materials Internal components: Brass/steel</p>
--	---	--	--

### Electrical details for solenoid operators

Voltage tolerance	± 10%
Rating	100% continuous duty
Inlet orifice	1,0 mm
Electrical connection	Industrial Standard, 22 mm
Solenoid coil mounting	Four positions x 90°
Protection class	IP 65 (with sealed plug)


### Technical data - standard models

Symbol	Port size	Size	Actuation/return	Voltage	Pilot port	Weight (kg)	Typ
	G1/4	Basic	Solenoid/spring	24 V d.c.	-	0,91	P72F-2GC-PFN *1)
	G3/8		Solenoid/spring	24 V d.c.	-	0,90	P72F-3GC-PFN*1)
	G1/4	Basic	Air/spring	-	M5	0,88	P72F-2GA-NNN
	G3/8		Air/spring	-	M5	0,87	P72F-2GA-NNN

\*1) To select other solenoid type and coil voltage refer to option selector on page 2

## Voltage codes and spare coils

22 mm coil for connector interface acc. to industrial standard

	Voltage	Power Inrush/Hold	Model	Code
	12 V d.c.	2 W	QM/48/12J/21	12J
	24 V d.c.	2 W	QM/48/13J/21	13J
	110/120 V 50/60 Hz	4/2,5 VA	QM/48/18J/21	18J
	220/240 V 50/60 Hz	6/5,0 VA	QM/48/19J/21	19J

## Connector plugs



## P72F on selector

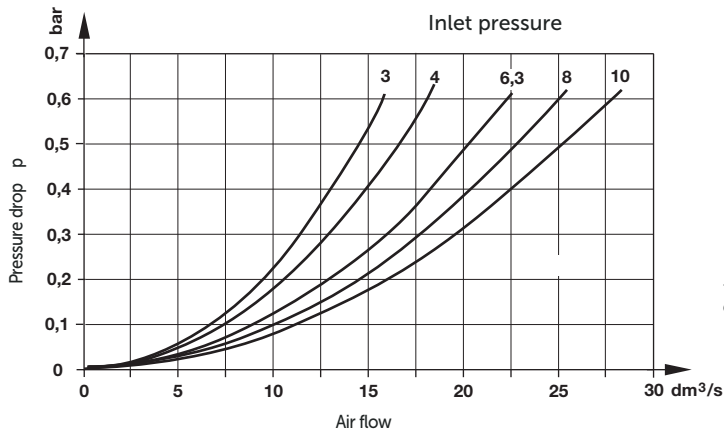
Port size	Substitute
1/4"	2
3/8"	3
Thread size	Substitute
ISO G (standard)	G
PTF	A
Operator	Substitute
Air pilot *1)	A
22 mm miniature solenoid	C
CNOMO	L

\*1)To order air pilot models also substitute 'NNN' at digits 8, 9 and 10 e.g. P72F-2GA-NNN.

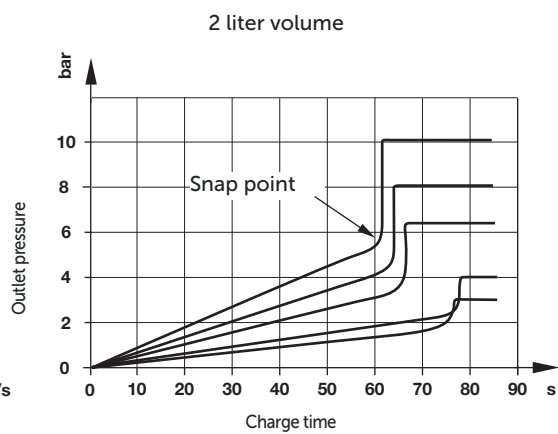
Connector plugs	Substitute
With	A
Without	N
Coil voltage	Substitute
24 V d.c.	F
12 V d.c.	E
220/240 V a.c.	B
110/120 V a.c.	A
No coil	Z
No solenoid	N
Solenoid operator	Substitute
With	P
No solenoid	N

## Flow characteristics

Port size: G1/4



## Charge time



### Accessories

<p>Quikclamp®</p> <p>Page 3</p> <p>4214-51</p>	<p>Quikclamp with wall bracket®</p> <p>Page 3</p> <p>4214-52</p>	<p>Quikmount pipe adaptor *1)</p> <p>Page 3</p> <p>G1/4: 4215-08 G3/8: 4215-09 1/4 PTF: 4215-02 3/8 PTF: 4215-03</p>	<p>Porting block with three alternative G1/4 ports</p> <p>Page 3</p> <p>G1/4: 4216-52 1/4 PTF: 4216-50</p>	<p>2/2 Shut-off valves (for full technical specification see datasheet 8.160.600)</p> <p>Page 3</p> <p>G1/4: T72B-2GA-P1N G3/8: T72B-3GA-P1N 1/4 PTF: T72B-2AA-P1N 3/8 PTF: T72B-3AA-P1N</p>	<p>3/2 Shut-off valves (for full technical specification see datasheet 8.160.600)</p> <p>Page 3</p> <p>G1/4: T72T-2GA-P1N G3/8: T72T-3GA-P1N 1/4 PTF: T72T-2AA-P1N 3/8 PTF: T72T-3AA-P1N</p>
--	--	--	--	--	--

### Pressure switch

<p>Porting block for pressure switch</p> <p>0523109000000000</p>	<p>Pressure switch (0,5 ... 8 bar)</p> <p>0881300000000000</p>	<p>Padlock (brass) with two keys *1)</p> <p>0613633000000000</p>
--	--	--

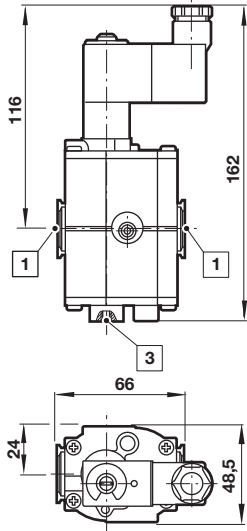
\*1) for shut-off valves

### Padlock

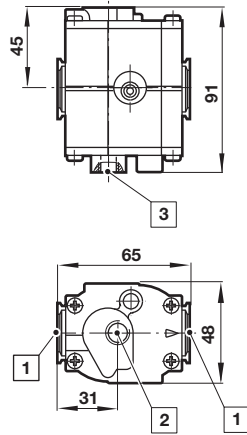
<p>Silencer</p> <p>Page 3</p> <p>R1/4: MB002B 1/4 PTF: MB002A</p>
---

## Drawings

### Solenoid actuated

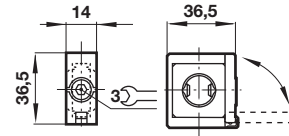


### Air pilot actuated

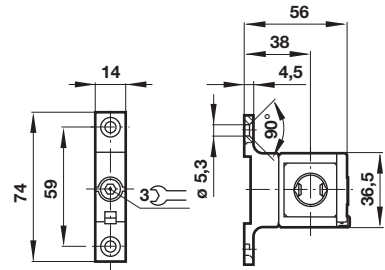


### Accessories Quikclamp®

Dimensions in mm  
Projection/First angle

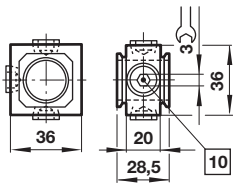


### Quikclamp® with wall bracket



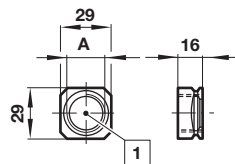
- 1 Main ports 1/4" or 3/8"
- 2 Pilot port
- 3 Exhaust port

### Porting block



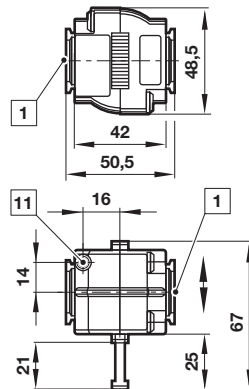
- 10 Ports (G1/4 or 1/4 NPT ) plugged

### Pipe adapter



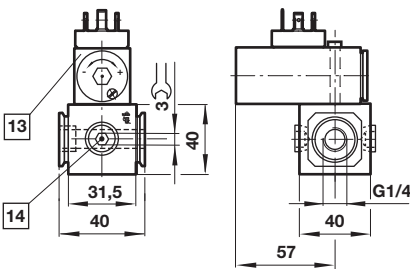
- 1 Main ports 1/4" or 3/8" ISO G/PTF

### Shut-off valves



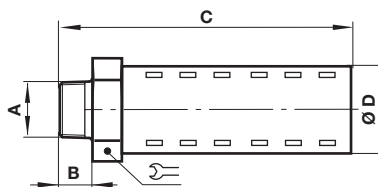
- 1 Main ports 1/4" or 3/8" ISO G/PTF
- 11 Exhaust port M5 at 3/2 valve only

### Porting block for pressure switch



- 13 Pressure switch is not in scope of delivery
- 14 Alternative G1/4 ports plugged

### Silencer



A	B	C	D	Model
R1/4	17	92	32	MB002B
1/4 NPT	17	92	32	MB002A

## Warning

These products are intended for use in industrial compressed air systems only. Do not use these products where pressures and temperatures can exceed those listed under »Technical features/data«.

Before using these products with fluids other than those specified, for non-industrial applications, life-support systems or other applications not within published specifications, consult IMI Precision Engineering. Through misuse, age, or malfunction, components used in fluid power systems can fail in various modes.

The system designer is warned to consider the failure modes of all component parts used in fluid power systems and to provide adequate safeguards to prevent personal injury or damage to equipment in the event of such failure.

System designers must provide a warning to end users in the system instructional manual if protection against a failure mode cannot be adequately provided.

System designers and end users are cautioned to review specific warnings found in instruction sheets packed and shipped with these products.