

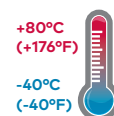
HR84G - Pressure regulator

For Extreme Temperature applications

Excelon® Plus Modular System



- > Port size: 3/8" ... 3/4" (ISO G/PTF)
- > ABS cover with High impact properties
- > Excelon® Plus design allows in-line installation or modular installation with other Excelon® Plus products
- > Salt Spray compliant to ISO 9227



Technical features pressure regulator

Medium:

Compressed air only

Maximum supply pressure:

20 bar (290 psi)

Outlet pressure ranges:

0.3 ... 10 bar (4 ... 145 psi),

0.3 ... 4 bar (4 ... 58 psi) optional,

0.7...17bar (10...247psi) optional

Gauge:

Gauge port as standard

(Rc 1/8 or 1/8 PTF)

Integrated gauge as option

Port size:

G3/8, G1/2, G3/4,
3/8 PTF, 1/2 PTF, 3/4 PTF

Diaphragm Type:

Relieving & Non-Relieving

Flow:

116 dm³/s at port size: 1/2",
Inlet pressure 10 bar (145 psi),
6.3 bar (91 psi) set pressure and
a Δp: 1 bar (14.5 psi) drop from
set.

Ambient/Media temperature:

Unit with gauge port without
integrated gauge :

-40 ... +80°C (-40 ... +176°F)

Air supply must be dry enough
to avoid ice formation at
temperatures below +2°C (+35°F).

Atex:

Regulators HR84 are in conform-
ity with Atex 2014/34/EU



II 2 GD

Ex h IIC T6 Gb

EX h IIIC T85°C Db

Materials:

Body: Die cast aluminium

Body covers:

ABS (Magnum 3904)

Bonnet: Die cast Aluminium

Valve: Brass and

Low temperature Nitrile

Elastomers: Low temperature
Nitrile

Diaphragm: Low temperature

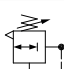
Silicone, polyester reinforced

Lower spring rest and dia-

phragm retainer:

Aluminium

Technical data HR84G - standard models with gauge port Rc1/8 (without gauge)

Symbol	Port size	Pressure range (bar)	Adjustment	Diaphragm Type	Weight (kg)	Model*)
	G3/8	0.3 ... 10	T-bar	Relieving	0.75	HR84G-3GT-RMN
	G1/2	0.3 ... 10	T-bar	Relieving	0.75	HR84G-4GT-RMN
	G3/4	0.3 ... 10	T-bar	Relieving	0.73	HR84G-6GT-RMN

*) All models shown here are supplied with gauge port applicable for flow direction left to right.

With flow direction right to left please use the online configurator www.norgren.com/air-preparation-configurator or contact Norgren

Option selector *1)

Port size	Substitute
3/8"	3
1/2"	4
3/4"	6
Thread form	Substitute
PTF	A
ISO G	G
Adjustment	Substitute
T-bar	T

HR84G-★★T-★★★

Gauge	Substitute
Without integrated gauge but with gauge port 1/8"	N
With integrated gauge *3)	G
Pressure range *2)	Substitute
0.3 ... 4 bar	F
0.3 ... 10 bar (standard)	M
0.7 ... 17 bar	S
Diaphragm Type	Substitute
Relieving	R
Non-Relieving	N

*1) All models shown here are applicable for flow direction left to right.

With flow direction right to left please use the online configurator

www.norgren.com/air-preparation-configurator or contact Norgren

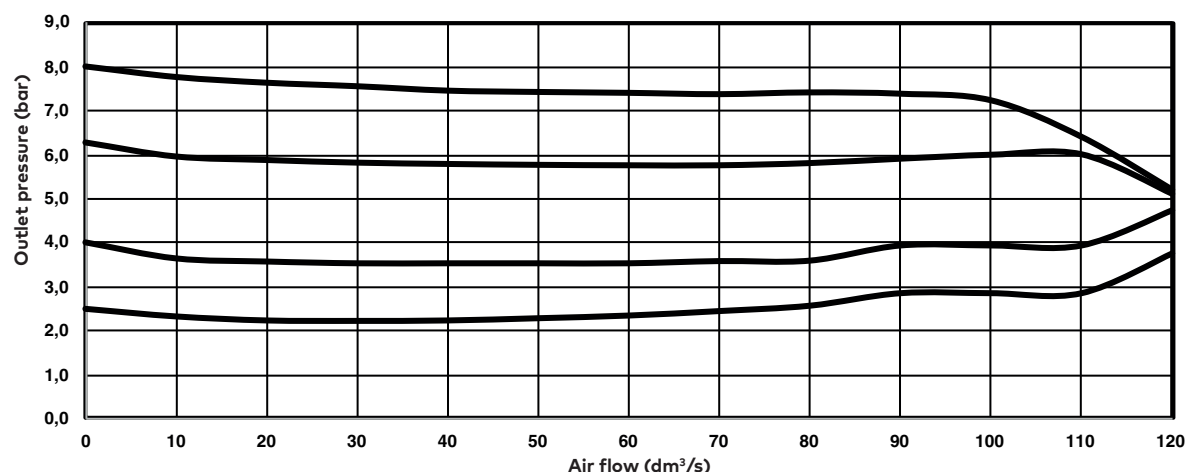
*2) Outlet pressure can be adjusted to pressures in excess of, and less than, those specified. Do not use these units to control pressures outside of the specified ranges.

*3) Attention : With integrated gauge temperature range of the unit changes to -20°C ... +65°C

Flow characteristics

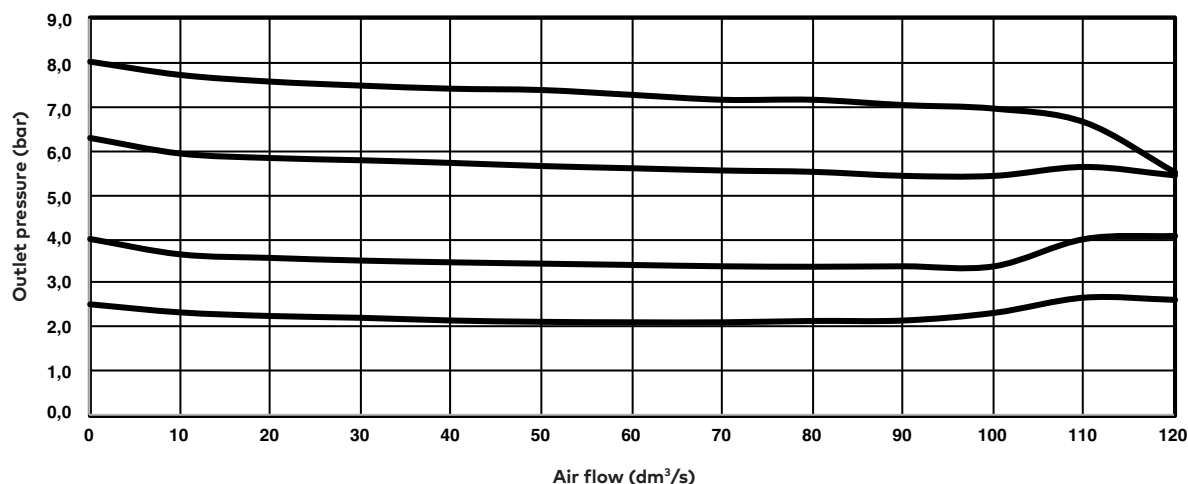
Inlet pressure: 10 bar (145 psi)

Port size: 1/2"



Inlet pressure: 10 bar (145 psi)

Port size: 3/8"



Accessories

Quickclamp®



Page 5

H840014-51KIT

Quickclamp® with bracket assembled



Page 5

H840014-52KIT

Neck mounting bracket and panel nut



Page 5

840068-51KIT

Panel mounting nut



Page 5

840048-89KIT

Mounting bracket



Page 5

840024-50KIT

Gauge adaptor kit 1/8 PTF



H840143-01KIT

Gauge adaptor kit R 1/8



H840143-02KIT

Full flow porting block horizontal, 3/4 PTF



Page 6

H840028-50KIT

Full flow porting block horizontal, G3/4



Page 6

H840028-53KIT

Full flow porting block vertical, 3/4"PTF



Page 6

H840028-68KIT

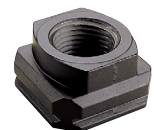
Full flow porting block vertical, G3/4"



Page 6

H840028-69KIT

Port Adaptors



Page 6

3/8 PTF	H840015-02KIT
1/2 PTF	H840015-03KIT
3/4 PTF	H840015-04KIT
G3/8	H840015-10KIT
G1/2	H840015-11KIT
G3/4	H840015-12KIT

Pressure sensing block 1/4 PTF



Page 6

H840016-50KIT

Pressure sensing block G1/4



Page 6

H840016-51KIT

Pressure switch interface block (18D pressure switch) G1/4



Page 6

0337717000000000

Pressure switch 18D (0,5 ... 8bar) *4



Page 7

0881300

Digital pressure switch 51D (-1 ... 10 bar) *2



Page 7

0860810

*2) -20 ... +60°C (-4 ... +140°F)

*4) -10°... +85°C (-14° ... +185°F)

HR84 / HB84 Elastomer Kit, relieving



HFRLB84-KIT

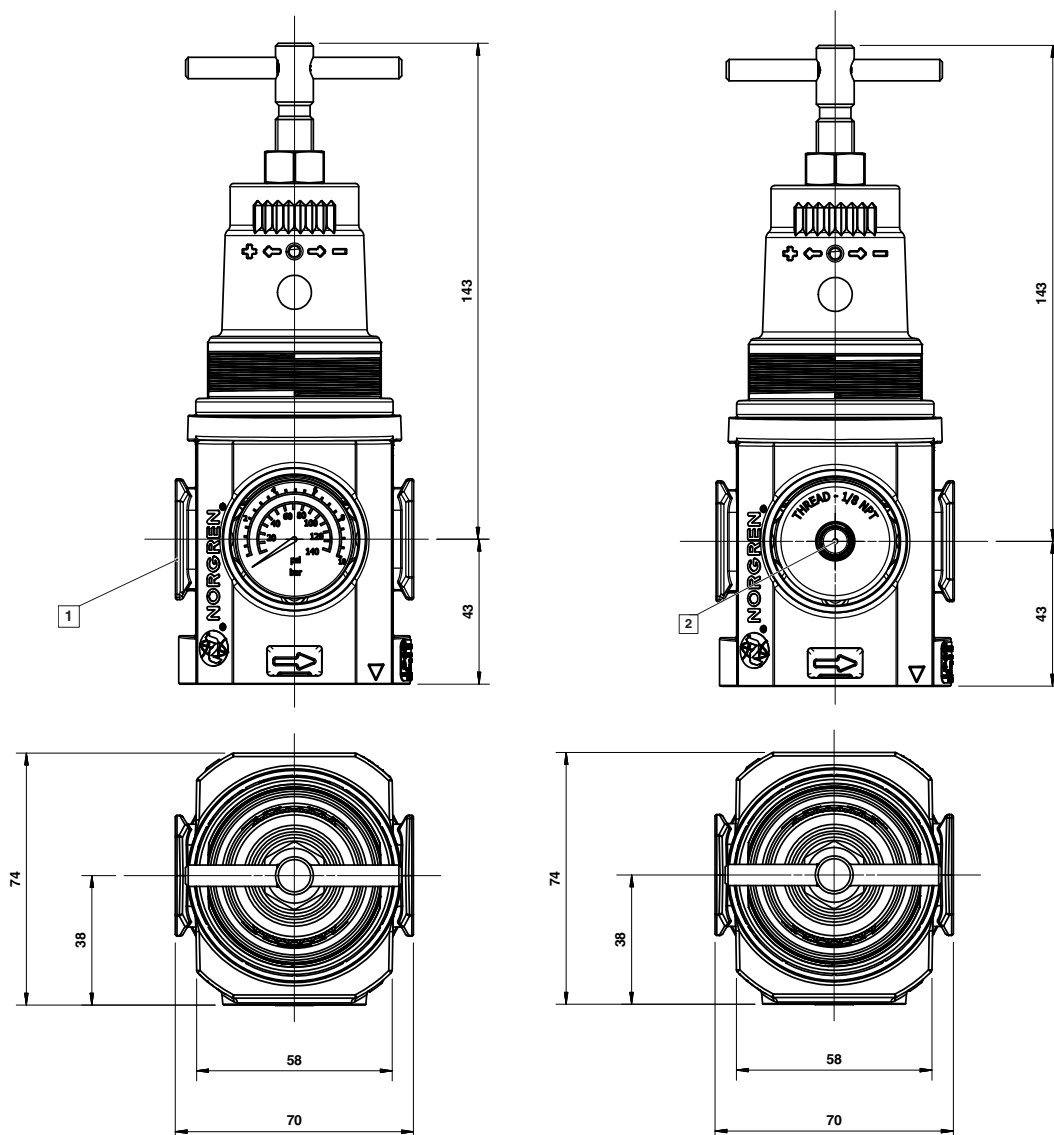
HR84 / HB84 Elastomer kit, Non-relieving



FRLB84NR-KIT

Dimensions

Dimensions in mm
Projection/First angle



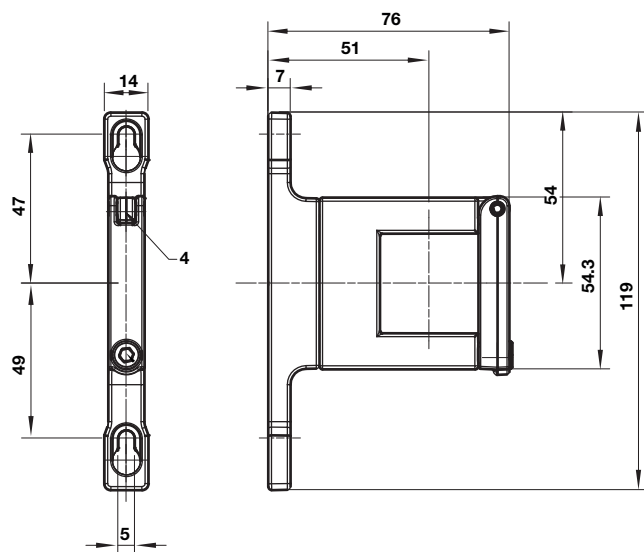
- 1 Main ports 3/8", 1/2" or 3/4"
(ISO G/PTF)
- 2 Gauge Port Rc 1/8 for ISO G and
1/8 PTF for PTF main ports

Accessories

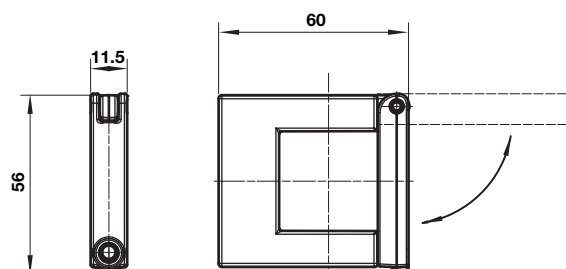
Dimensions in mm
Projection/First angle



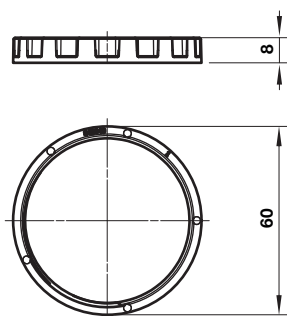
Quikclamp® with wall bracket



Quikclamp®

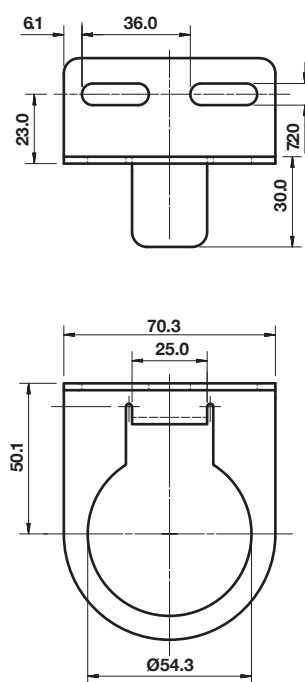


Panel mounting nut

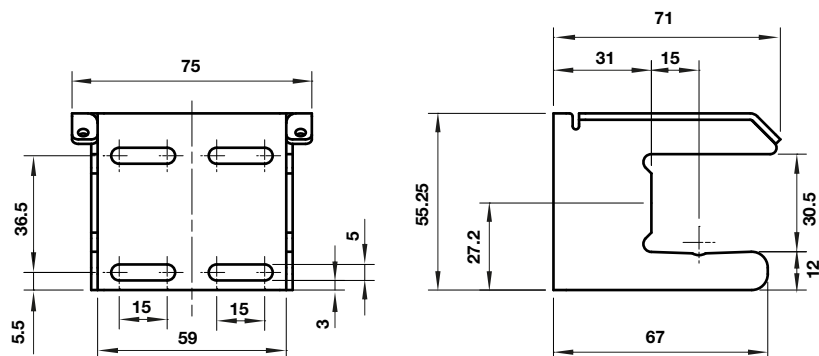


Recommended panel hole size:
ø 55 mm ... 57 mm
Panel thickness:
2 ... 6 mm

Neck mounting bracket



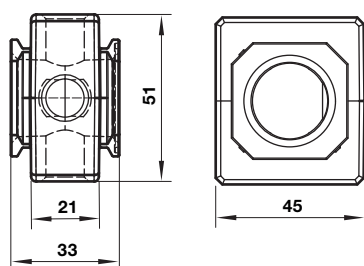
Mounting bracket



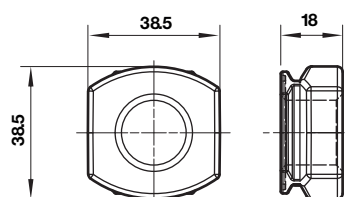
Dimensions in mm
Projection/First angle



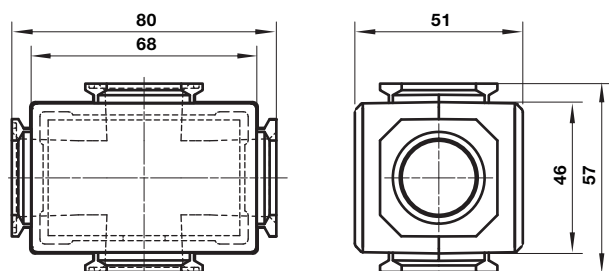
Pressure sensing block



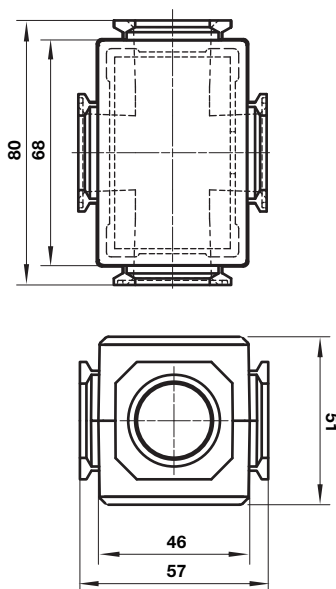
Pipe adaptor



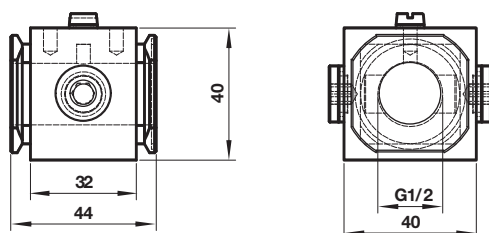
Full flow porting block horizontal



Full flow porting block vertical

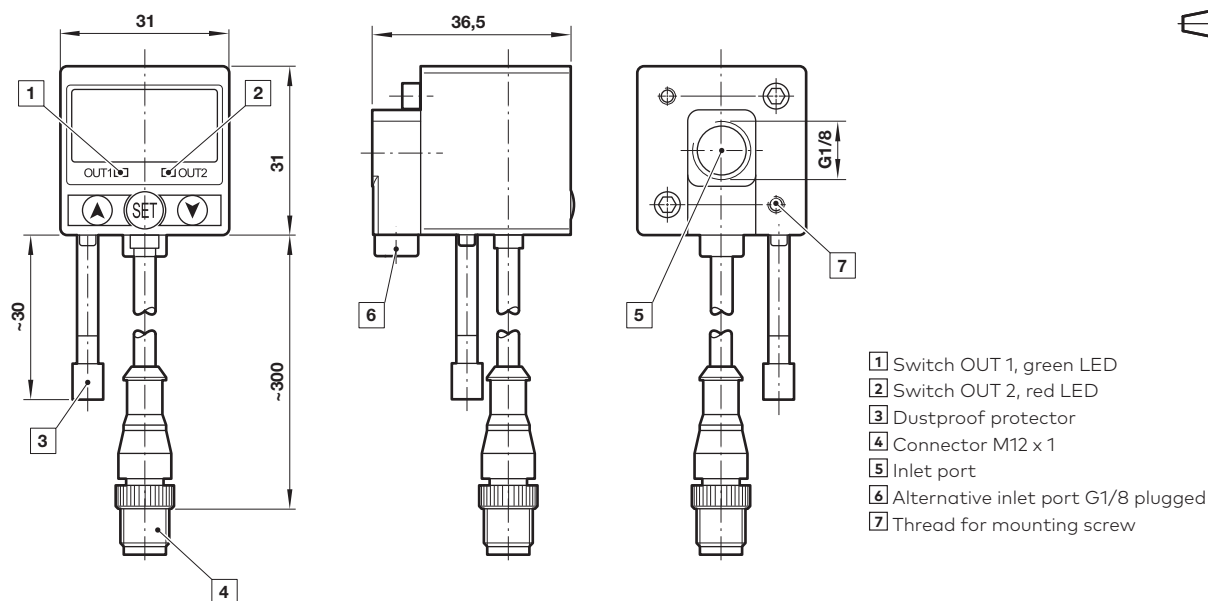


Porting block for 18D pressure switch



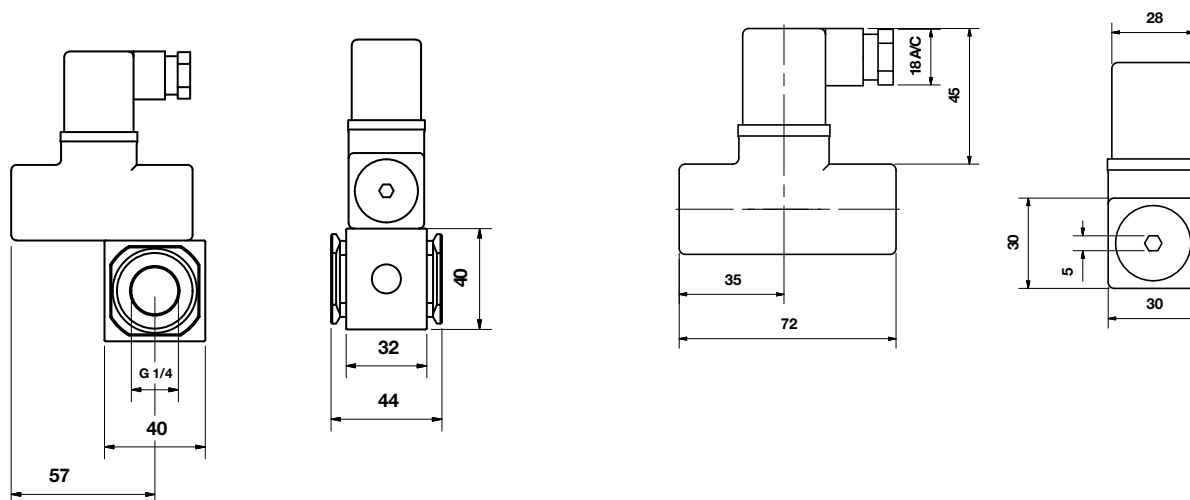
51D Pressure switch - digital

Dimensions in mm
Projection/First angle



18D Porting block and 18D assembled

18D Pressure switch



Warning

These products are intended for use in industrial compressed air systems only. Do not use these products where pressures and temperatures can exceed those listed under »**Technical features/data**«. Before using these products with fluids other than those specified, for non-industrial applications, life-support systems or other applications not within published specifications, consult IMI Precision Engineering, Norgren Ltd.

Through misuse, age, or malfunction, components used in fluid power systems can fail in various modes. The system designer is warned to consider the failure modes of all component parts used in fluid power systems and to provide adequate safeguards to prevent personal injury or damage to equipment in the event of such failure.

System designers must provide a warning to end users in the system instructional manual if protection against a failure mode cannot be adequately provided.

System designers and end users are cautioned to review specific warnings found in instruction sheets packed and shipped with these products.