

# P64S - Olympian Plus plug-in system

## Soft start monitored dump valves

- > Port size: 1/4" & 3/4" (ISO G/PTF)
- > Olympian Plus plug in design or controlled increase of downstream pressure on start up
- > The positively driven micro switch ensures a monitored dump function
- > High forward flow and dump facility



### Technical features

#### Medium:

Compressed air only

#### Operating pressure:

3 bar (43 psi) minimum  
10 bar (145 psi) maximum

#### Snap pressure:

Full flow when downstream pressure reaches 35 ... 60% of inlet pressure

#### Charge time:

For 2 litre downstream volume and 6,3 bar (90 psi) inlet pressure  
0,2 sec. minimum  
75 sec. maximum

#### Flow:

See diagram on page 2

#### Port sizes:

1/4", 3/8", 1/2" or 3/4"

#### Exhaust port:

G1/2 with ISO G main ports  
1/2" PTF with PTF main ports

#### Gauge Ports:

Rc1/8

#### Ambient/Media temperature:

0 ... +50°C (+32 ... +122°F)  
Air supply must be dry enough to avoid ice formation at temperatures below +2°C (+35°F).

**Note: Soft start valves never shut off completely, and must be installed downstream of a directional control valve such as a Norgren Poppet or Lockout Valve.**

#### Materials:

Body: Zinc alloy  
Intermediate body: Aluminium  
Filter discs: Sintered plastic  
Internal components: Brass; steel or stainless steel  
Top plate: Aluminium  
Exhaust Bonnet: Zinc alloy  
Yoke: Zinc alloy  
Elastomers: NBR

### Electrical details for solenoid operators

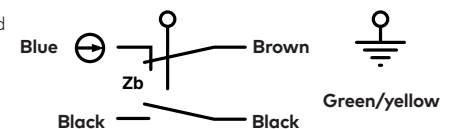
Voltage tolerance	± 10%
Rating	100% continuous duty
Inlet orifice	1,0 mm
Electrical connection	Industrial Standard, 22 mm
Solenoid coil mounting	Four positions x 90°
Protection class	IP 65 (with sealed plug)

### Electrical details for monitoring switch

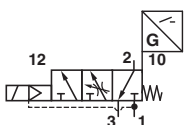
Voltage	240 V a.c.
Current	1,5 A
Connection cable	Harmonised CENELEC 5 x 0,75 mm²
Cable length	2 m
Protection class	IP 66

#### Switch details

All electrical connections to be made by a competent licensed electrician  
Break - before - Make contact  
Normally Open/Normally Closed




### Technical data - standard models

Symbol	Port size	Size	Actuation/return	Voltage	Weight (kg)	Typ *1)
	G1/4	—	Solenoid/spring	24 V d.c.	~ 2,3	P64S-2GC-N1N
	G3/8	—	Solenoid/spring	24 V d.c.	~ 2,3	P64S-3GC-N1N
	G1/2	Basic	Solenoid/spring	24 V d.c.	~ 2,3	P64S-4GC-N1N
	G3/4	—	Solenoid/spring	24 V d.c.	~ 2,3	P64S-6GC-N1N
	Without yoke	—	Solenoid/spring	24 V d.c.	~ 1,8	P64S-NNC-N1N

\*1) Units with PTF threads on main port therefore substitute 'G' at the 7th digit changed into 'A'

## Voltage codes and spare coils

22 mm coil for connector interface acc. to industrial standard

	Voltage	Power Inrush/Hold	Model	Code
	24 V d.c	2 W	QM/48/13J/21	13J

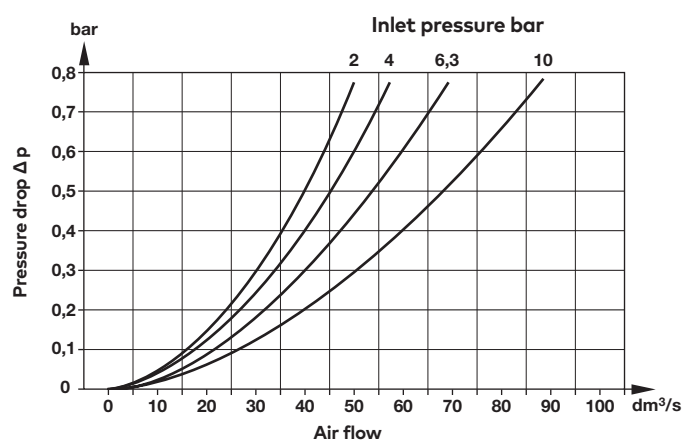
## Connector plugs

Industrial standard  
22 mm 2-pole + PE

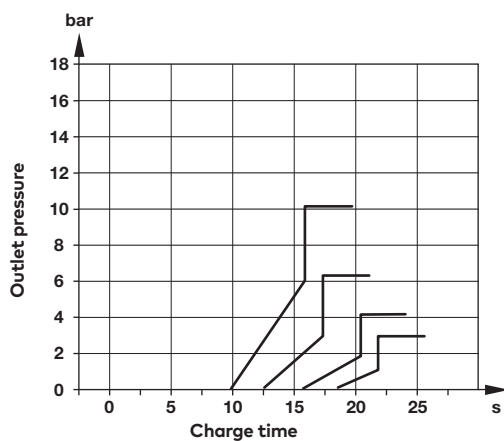


0657868


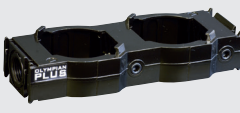



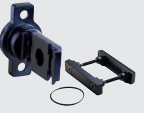
## Flow characteristics









## Maximum charge time



## Accessories

	Models with G-thread Single yoke	Double yoke	3/2 Shut-off valve Threaded inlet only	Threaded outlet only	End connector kit	Rear entry bracket kit
						
<b>Thread</b>						
G1/4	Y64A-2GA-N1N	Y64A-2GA-N2N	T64T-2GB-P1N	T64T-2GC-P1N	—	—
G3/8	Y64A-3GA-N1N	Y64A-3GA-N2N	T64T-3GB-P1N	T64T-3GC-P1N	—	—
G1/2	Y64A-4GA-N1N	Y64A-4GA-N2N	T64T-4GB-P1N	T64T-4GC-P1N	74505-50	—
G3/4	Y64A-6GA-N1N*	Y64A-6GA-N2N*	T64T-6GB-P1N	T64T-6GC-P1N	74505-53	18-026-981
1/4 PTF	Y64A-2AA-N1N	Y64A-2AA-N2N	T64T-2AB-P1N	T64T-2AC-P1N	—	—
3/8 PTF	Y64A-3AA-N1N	Y64A-3AA-N2N	T64T-3AB-P1N	T64T-3AC-P1N	—	—
1/2 PTF	Y64A-4AA-N1N	Y64A-4AA-N2N	T64T-4AB-P1N	T64T-4AC-P1N	74505-52	—
3/4 PTF	Y64A-6AA-N1N*	Y64A-6AA-N2N*	T64T-6AB-P1N	T64T-6AC-P1N	74505-55	—

\*These yokes are supplied with two end connector kits as standard.

Bracket mounting	Nut	Silencer	Yoke connector kit	Porting block	Padlock with two keys
					
74504-50	74502-89	MB004B (R1/2) MB004A (1/2 NPT)	74503-51	74507-50	0613633 (brass)

## Gauges

Center back  
connection, white face  
(full technical  
specification  
see datasheet  
8.900.900)



Pressure range bar *1	MPa	psi	Ø	Thread size	Model
0 ... 10	0 ... 1	0 ... 145	50 mm	R1/8	18-015-013
0 ... 25	0 ... 2,5	0 ... 362	50 mm	R1/8	18-015-014

\*1) primary scale

Center back  
connection, black face  
for North America (full  
technical specification  
see datasheet  
8.900.900)

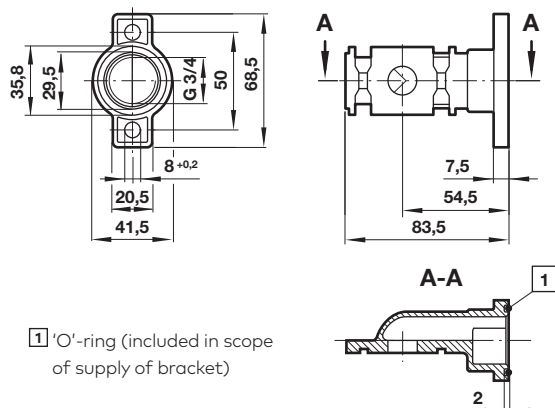


Pressure range psig *1	bar	MPa	Ø	Thread size	Model
0 ... 160	0 ... 11	0 ... 1.1	2" (50 mm)	1/8 NPT	18-015-204
0 ... 400	0 ... 28	0 ... 2.8	2" (50 mm)	1/8 NPT	18-015-206

\*1) primary scale

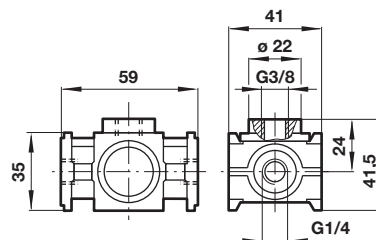


### Rear entry bracket 18-026-981

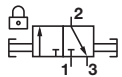


### Porting block 74507-50

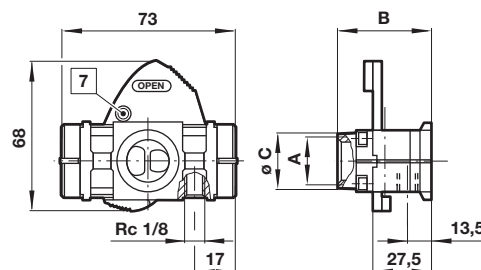
Dimensions in mm  
Projection/First angle



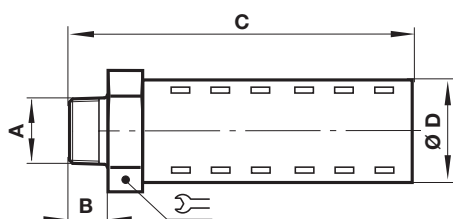
### 3/2 Shut-off valve

Symbol	A	B	ø C	Model
	G1/4	48	27	T64T-2G*-P1N
	G3/8	48	27	T64T-3G*-P1N
	G1/2	48	27	T64T-4G*-P1N
	G3/4	51	33	T64T-6G*-P1N

\* B = Threaded inlet only, C = Threaded outlet only



### Silencer



A	B	C	D	Symbol	Model
R1/2	17	92	32		MB004B
1/2 NPT	17	92	32		MB004A

### Warning

These products are intended for use in industrial compressed air systems only. Do not use these products where pressures and temperatures can exceed those listed under »Technical features/data«.

Before using these products with fluids other than those specified, for non-industrial applications, life-support systems or other applications not within published specifications, consult IMI Precision Engineering.

Through misuse, age, or malfunction, components used in fluid power systems can fail in various modes.

The system designer is warned to consider the failure modes of all component parts used in fluid power systems and to provide adequate safeguards to prevent personal injury or damage to equipment in the event of such failure.

System designers must provide a warning to end users in the system instructional manual if protection against a failure mode cannot be adequately provided.

System designers and end users are cautioned to review specific warnings found in instruction sheets packed and shipped with these products.