

R06

Water or compressed air regulator



- > Port size: G1/8 & G1/4
- > Compact design
- > Suitable for use on general duty water systems, (not potable/ drinking water applications).
- > Panel mounting facility



Technical features

Medium:

Water or compressed air

Maximum inlet pressure:

27 bar (391 psi)

Pressure range:

0,3 ... 7 bar (4 ... 101 psi)
 0,1 ... 0,7 bar (1 ... 10 psi),
 0,3 ... 3,5 bar (4 ... 50 psi),
 0,3 ... 8,6 bar (4 ... 124 psi)

Typical flow:

See below

Gauge ports:

Rc 1/8

Ambient/Media temperature:

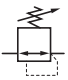
-2 ... +65°C (+28,4 ... 149 °F)

Air supply must be dry enough to avoid ice formation at temperatures below +2°C (+35°F)

Materials:

Body: Brass
 Bonnet: Brass, Acetal resin
 adjusting knob/bonnet optional
 Adjusting screw: Steel
 Elastomers: NBR

Technical data, standard models

Symbol	Port size	Pressure range (bar)	Flow *1) (dm ³ /s)	Flow *2) (dm ³ /min)	Weight (kg)	Model
	G1/8	0,3 ... 7	5,7	4,9	0,09	R06-170-NNKG
	G1/4	0,3 ... 7	5,7	4,9	0,09	R06-270-NNKG

*1) Typical flow for compressed air service at 7 bar inlet pressure, 6,3 outlet pressure and a 1 bar droop from set.

*2) Typical flow for water service at 7 bar inlet pressure, 4 outlet pressure and a 1 bar droop from set.

Option selector

R06-***-★N★G

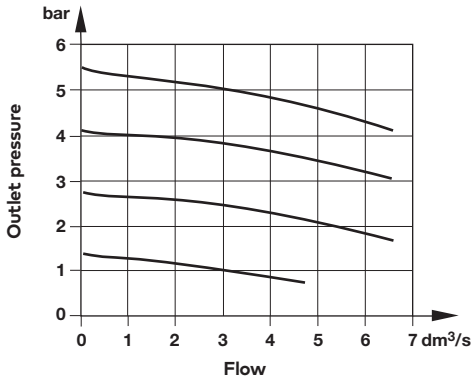
Port size	Substitute
G1/8	1
G1/4	2
Option	Substitute
Standard brass bonnet/steel adjusting screw (standard)	70
Acetal resin adjusting knob/ bonnet	69
Diaphragm	Substitute
Relieving	R
Non-relieving (standard)	N

Outlet pressure adjustment ranges *	Substitute
0,1 ... 0,7 bar	A
0,3 ... 3,5 bar	E
0,3 ... 7 bar (standard)	K
0,3 ... 8,6 bar	L

* Outlet pressure can be adjusted to pressures in excess of, and less than, those specified. Do not use these units to control pressures outside of the specified ranges.

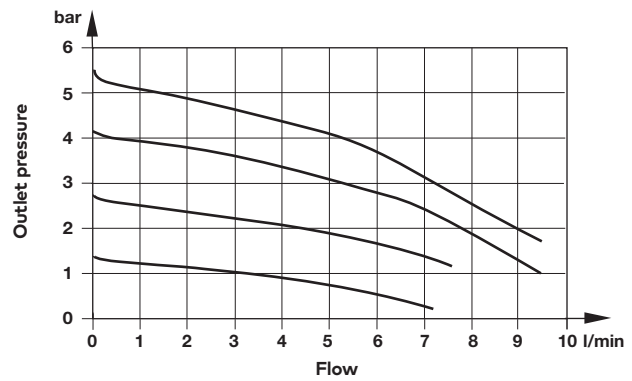
Air flow characteristics

R06 – Port size: G1/8, inlet pressure: 7 bar, pressure range: 0,3 ... 7 bar



Water flow characteristics

R06 – Port size: G1/8, inlet pressure: 7 bar, pressure range: 0,3 ... 7 bar



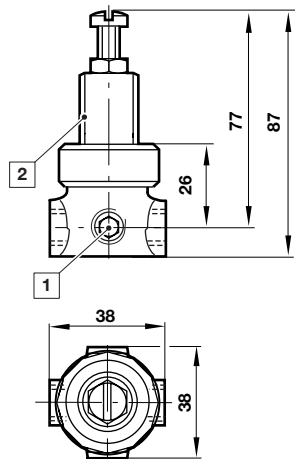
Accessories

Wall mounting bracket and panel nut	Panel nut	Adjusting screw	Service kit
			
18-001-021 (for brass model) 18-001-053 (for acetal model)	18-003-038 (for brass model) 2962-89 (for acetal model)	618-99 (knurled)	3407-17

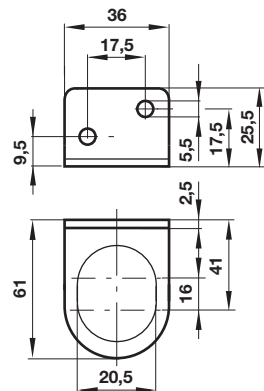
Dimensions in mm
Projection/First angle



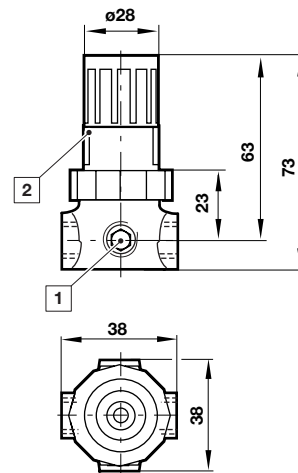
Regulator with brass bonnet



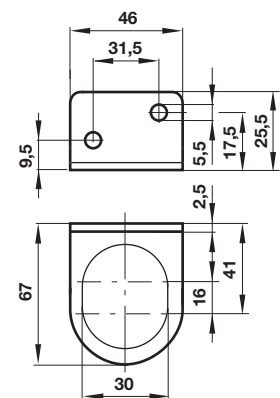
Wall mounting bracket for brass bonnet



Regulator with Acetal bonnet



Wall mounting bracket for Acetal bonnet



- 1 Gauge port
- 2 Panel mounting hole diameter
for brass models 21 mm, Panel thickness 0 ... 6 mm
for Acetal models 30 mm, Panel thickness 0 ... 6 mm

Warning

These products are intended for use in industrial compressed air systems only. Do not use these products where pressures and temperatures can exceed those listed under

»Technical features/data«

Before using these products with fluids other than those specified, for non-industrial applications, life-support systems or other applications not within published specifications, consult IMI Precision Engineering.

Through misuse, age, or malfunction, components used in fluid power systems can fail in various modes.

The system designer is warned to consider the failure modes of all component parts used in fluid power systems and to provide adequate safeguards to prevent personal injury or damage to equipment in the event of such failure.

System designers must provide a warning to end users in the system instructional manual if protection against a failure mode cannot be adequately provided.

System designers and end users are cautioned to review specific warnings found in instruction sheets packed and shipped with these products.