

- > Port size: 1/4 PTF
- > Metallic parts meet NACE*
- > Designed for use in corrosive environments
- > Adjusting knob has snap-action lock

- > Applications include marine environment, oil and gas production, chemical and industrial compressed air systems

* National Association of Corrosion Engineers (NACE) MR-01-75 defines requirements for sulphide stress cracking resistant materials used in well-head and other corrosive environments.



Technical features

Medium:

Compressed air or neutral gases
Other media on request

Operating pressure:

20 bar max (290 psi)

Pressure range:

0,3 ... 8,5 bar (4 ... 123 psi),
0,3 ... 3,5 bar (4 ... 50 psi)

Diaphragm:

With or without relieving

Typical flow:

see below

Gauge ports:

1/8 PTF

Ambient/Media temperature:

Acetal bonnet

-25 ... +66°C (-13 ... 150°F)

T-handle

-25 ... +80°C (-13 ... 176 °F)

- 40°C (-40°F) version on request

Air supply must be dry enough to avoid ice formation at temperatures below +2°C (+35 °F).

Materials:

Body and valve: 1.4104 (316)

stainless steel

Bonnet: 1.4104 (316) stainless steel with T-handle or Acetal with stainless steel adjusting screw

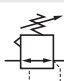
Valve seat: Acetal

Springs: 1.4319 (302) Stainless steel

stainless steel

Elastomers: FPM

Technical data, Standard models

Symbol	Port size	Outlet pressure range (bar)	Flow *1) (dm³/s)	Diaphragm	Bonnet type	Weight (kg)	Model
	1/4 PTF	0,3 ... 8,5	7	Relieving	Knob (Acetal)	0,15	R05-200-RNLA
	1/4 PTF	0,3 ... 8,5	7	Relieving	T-handle (stainless steel)	0,26	R05-232-RNLA

*1) Typical flow with 10 bar inlet pressure, 6,3 bar set pressure and 1 bar droop form set.

Option selector

Bonnet	Substitute
Standard knob (Acetal)	00
T-handle (Stainless steel)	32

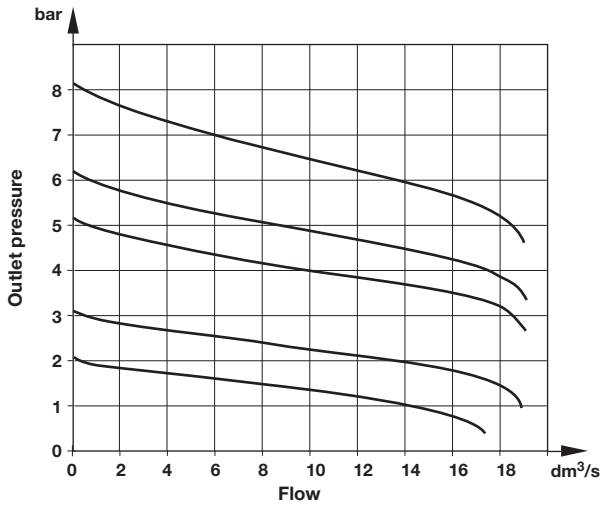
R05-2★★-★N★A

Outlet pressure adjustment ranges *	Substitute
0,3 ... 3,5 bar	E
0,3 ... 8,5 bar	L
Diaphragm	Substitute
Relieving	R
Non relieving	N

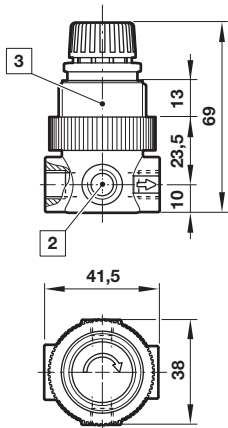
* Outlet pressure can be adjusted to pressures in excess of, and less than, those specified. Do not use these units to control pressures outside of the specified ranges.

Air flow characteristics

R05 – Port size: 1/4 PTF, inlet pressure: 12 bar, pressure range: 0,3 ... 8,5 bar



Regulator with Acetal bonnet



- 2 Gauge port: 1/8 PTF, standard units are shipped with two plugs for sealing gauge ports.
- 3 Panel mounting hole diameter 30 mm, Panel thickness 0 ... 6 mm

Warning

These products are intended for use in industrial compressed air systems only. Do not use these products where pressures and temperatures can exceed those listed under »Technical features/data«.

Before using these products with fluids other than those specified, for non-industrial applications, life-support systems or other applications not within published specifications, consult IMI Precision Engineering, Norgren GmbH. Through misuse, age, or malfunction, components used in fluid power systems can fail in various modes.

Accessories



*1) Stainless steel items not strictly to NACE standard MR-01-75.

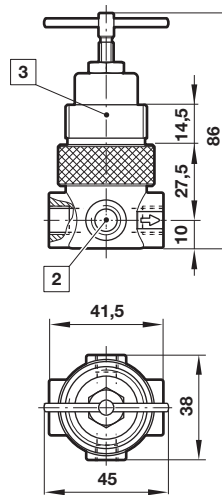
Spares kit



Dimensions in mm
 Projection/First angle



Regulator with stainless steel T-handle



The system designer is warned to consider the failure modes of all component parts used in fluid power systems and to provide adequate safeguards to prevent personal injury or damage to equipment in the event of such failure.

System designers must provide a warning to end users in the system instructional manual if protection against a failure mode cannot be adequately provided.

System designers and end users are cautioned to review specific warnings found in instruction sheets packed and shipped with these products.