

Redimount Filter
G³/₄ to G1¹/₂
Olympian

- Olympian plug-in design
- Provides effective liquid removal and positive solid filtration
- Large filter element area for minimum pressure drop
- Automatic Drain is operated by liquid level and also opens upon depressurisation


Technical Data

Medium:

Compressed air only

Maximum Pressure:

16 bar

Operating Temperature:

-20°C* to +80°C

*Consult our Technical Service for use below +2°C

Filter Element:

Standard - 40 µm nominal

Optional - 5 µm and 25 µm

Auxiliary/Gauge Ports:

G¹/₈

Maximum Flow with 6,3 bar inlet pressure and pressure drop of 0,5 bar:

210 dm³/s

Port Sizes

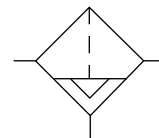
G³/₄, G1, G1¹/₄, G1¹/₂ to ISO 1179

Accepts ISO 228 (BS 2779) parallel or ISO 7 (BS 21) taper connectors

Alternative Models

Manual Drain

Other port thread forms

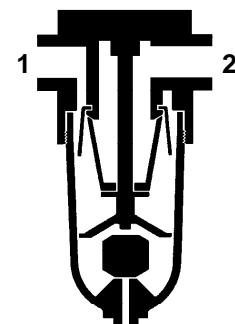

Materials

Aluminium alloy bowl and body. Synthetic rubber elastomeric materials. Sintered bronze filter element.

Ordering Information

To order a standard Redimount Filter, quote model number from tables overleaf.

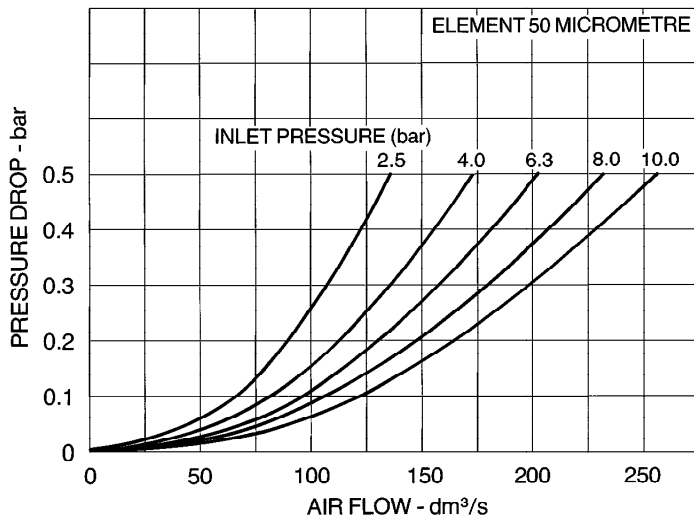
For non-standard models substitute appropriate digits as instructed.





Typical Performance Characteristics

FLOW CHARACTERISTICS



Standard Redimount Filters

Automatic Drain, 40 µm element

Type	Port Size	Model	Weight kg
Metal bowl	G ³ / ₄	F15-600-A3HD	2,72
	G1	F15-800-A3HD	2,60
	G1 ¹ / ₄	F15-A00-A3HD	2,70
	G1 ¹ / ₂	F15-B00-A3HD	2,54

Manual Drain, 40 µm element

Type	Port Size	Model	Weight kg
Metal bowl	G ³ / ₄	F15-600-M3HD	2,52
	G1	F15-800-M3HD	2,46
	G1 ¹ / ₄	F15-A00-M3HD	2,50
	G1 ¹ / ₂	F15-B00-M3HD	2,54

Non-standard Models

For replacement Filters, substitute '0' and 'O' at the 4th and 10th digits respectively, e.g. F15-000-A3HO. Supplied without Unidaptors as replacement units or for the build-up of Combination Units. Please consult our Technical Service for further details.

For optional 5 µm and 25 µm elements, substitute '1' or '2' respectively for '3' at the 8th digit, e.g. F15-600-A1HD.

Specify if unit is required complete with T15 Shut-Off Valve fitted upstream. For details of Shut-Off Valves, see page 8.11.021.01.

For other options, please consult our Technical Service.

Accessories

Wall Mounting Bracket Kit, see page 8.5.041.03.

Pressure Gauges, see page 8.11.031.01.



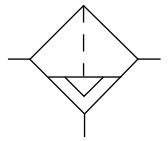
Metal Bowl

Automatic Drain

Manual Drain

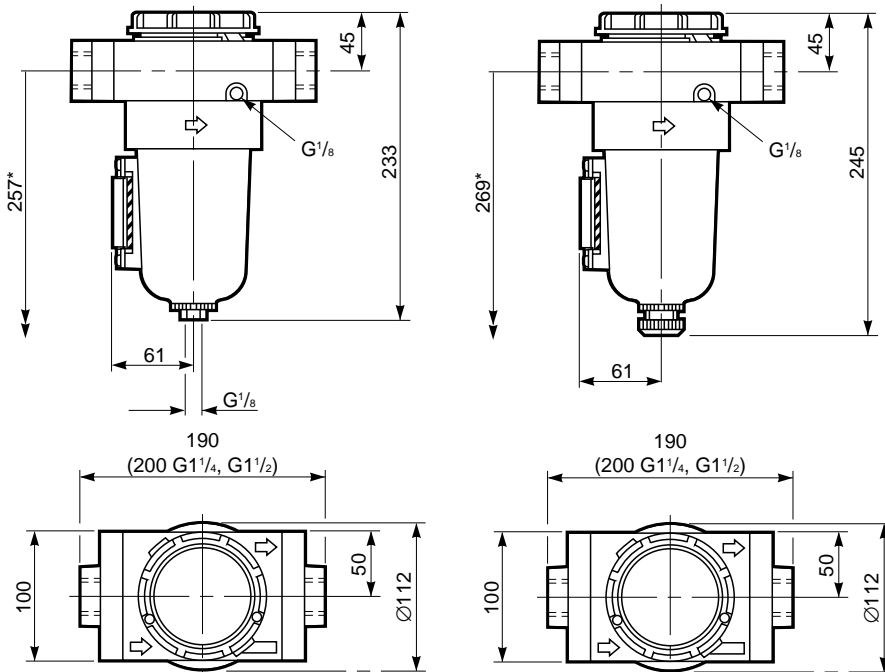
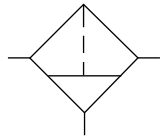
Automatic Drain

- F15-600-A3HD G³/₄
- F15-800-A3HD G1
- F15-A00-A3HD G1¹/₄
- F15-B00-A3HD G1¹/₂



Manual Drain

- F15-600-M3HD G³/₄
- F15-800-M3HD G1
- F15-A00-M3HD G1¹/₄
- F15-B00-M3HD G1¹/₂

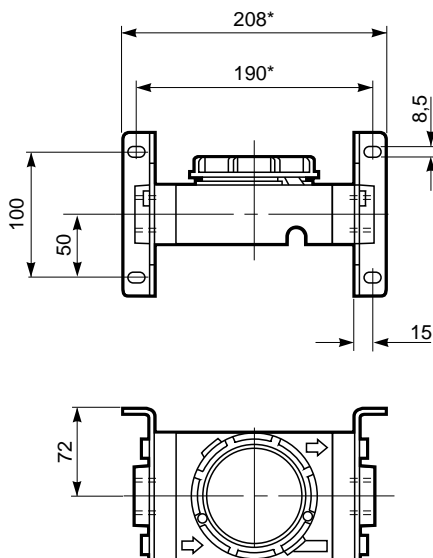


*Minimum clearance required to remove unit from yoke.

Bracket Mounting

Bracket Kit reference:

- G³/₄ 18-001-979
- G1 18-001-979
- G1¹/₄ 18-001-978
- G1¹/₂ N/A



*If Shut-Off Valve fitted add 46 mm to dimensions.



Spares Kits

Repair Kits include standard 40 µm element.
For other elements please specify.

Drain	Gasket Kit	Repair Kit
Automatic	F15-GK	F15-100A
Manual	F15-GK	F15-100M

Repair Kit for Metal Bowl available, reference 3256-RK.

Automatic Drain Kit available, reference 3000-97. Can be used to convert Manual Drain models to Automatic Drain.

Warning

These products are intended for use in industrial compressed air systems only. Do not use these products where *pressures* and *temperatures* can exceed those listed under **'Technical Data'**.

Before using these products with fluids other than those specified, for non-industrial applications, life-support systems, or other applications not within published specifications, consult NORGREN MARTONAIR.

Through misuse, age, or malfunction, components used in fluid power systems can fail in various modes. The system designer is warned to consider the failure modes of all component parts used in fluid power systems and to provide adequate safeguards to prevent personal injury or damage to equipment in the event of such failure.

System designers must provide a warning to end users in the system instructional manual if protection against a failure mode cannot be adequately provided.

System designers and end users are cautioned to review specific warnings found in instruction sheets packed and shipped with these products.