

Pneufit S

Stainless steel Push-in fittings



- > Developed to carry corrosive fluids or to be used in aggressive environments
- > Ideal for direct contact with food fluids
- > Can be used in salty environments and on machines that need frequent washing with aggressive detergents
- > Certified NSF 169 and conforming to NSF 61 & NSF 372 standards
- > Compliant with Food Contact Materials - Regulation (EC) 1935/2004
- > Tube size: Ø 4 ... 12 mm O/D
- > ISO G and ISO R threads
- > Swivel function on all elbows and tees
- > Quick connection and disconnection
- > Silicon free



Technical features

Medium:

Compressed air
(For other media please consult Technical Department)

Operating pressure:

Vacuum ... 20 bar (... 290 psi)
(Dependent upon operating specification of tubing)

Vacuum:

-750 mm of Hg i.e. 99%

Tube sizes:

4, 6, 8, 10, 12 mm O/D

Thread sizes:

ISO R, ISO G, Metric M5

Standard:

Conforms to BS EN 14743 -
Pneumatic fluid power - Push-in
connectors for thermoplastic tubes

Tubing types:

PA6, PA11, PA12, Polyethylene,
Polyurethane*, PTFE, FEP.

*Use from 90 to 98 Shore, for maximum
performance 98 Shore A is recommended.

Ambient/Media temperature:

-15°C ... +225°C (+5 ... 437°F)

Materials:

Body, release sleeve and grab
ring: AISI 316L stainless steel
'O'-ring & thread seal (BSPP):
FKM

Lubricants: FDA approved

Note: All raw materials and manufacturing
processes are Silicon free. To guarantee
sealed packaging please contact Norgren
technical support.

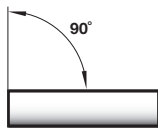
Typical applications:

Food and Beverage, Automation with Washing, Farming, Mining, Chemical, Petrolchemical, Pharmaceutical, Medical, Life Sciences, Vacuum

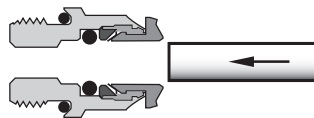
Food and beverage compliance:

NSF 169, NSF 61 and NSF 372
EC 1935/2004

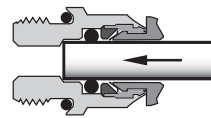
Method of assembly



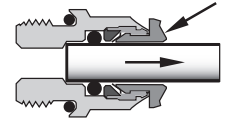
1. Ensure that the end of the tube is cleanly cut and square.



2. Push the tube through the release sleeve into the fitting.

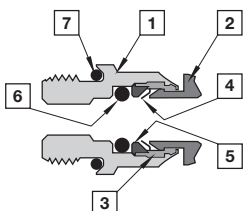


3. Continue pushing the tube through the 'O'-ring until it bottoms on the tube stop then pull back.



4. To disconnect push the tube into the fitting, hold down the release sleeve and withdraw the tube.

Components



- 1 Body
- 2 Release sleeve
- 3 Retainer
- 4 Grab ring
- 5 Bracking ring
- 6 'O'-ring
- 7 'O'-ring

Straight adaptors and connectors

Straight adaptor ISO R S0125  Page 3	Straight adaptor, ISO G S0225  Page 3	Straight female adaptor ISO G S0226  Page 3	Straight connector S0020  Page 3	Straight stem adaptor ISO G S0215  Page 3	Reducing connector S0023  Page 3	Bulkhead connector S0029  Page 4
---	---	---	--	---	--	--

Elbow adaptors and connectors

Swivel elbow adaptor ISO R S0147  Page 4	Swivel elbow adaptor ISO R S0147****L  Page 4	Swivel elbow adaptor ISO G S0247  Page 4	Swivel elbow adaptor ISO G S0247****L  Page 4	Elbow connector S0040  Page 5	Elbow connector S0040****L  Page 5
---	---	--	---	---	--

Tee, Y adaptors and connectors

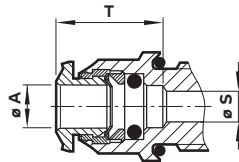
Swivel tee adaptor ISO R S0167  Page 5	Swivel tee adaptor ISO R S0167****L  Page 5	Swivel tee adaptor ISO G S0267  Page 5	Swivel tee adaptor ISO G S0267****L  Page 5	Tee connector S0060  Page 6	Tee connector S0060****L  Page 6
--	--	---	--	--	---

Accessories

Plug ISO G 66005  Page 6	Sleeve adaptor ISO G 66022  Page 6	Tee connector ISO G 66062  Page 6
---	--	---

Technical data

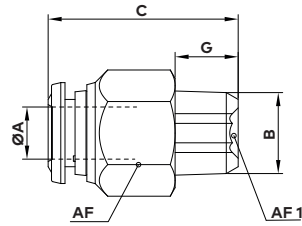
Ø A O/D tube	Ø S	T *2)
4	3,1	14
6	4,1	16
8 (1/8" thread *1))	5,1	16
8 (1/4" thread *1))	8,1	16
10	8,1	20,5
12 (3/8" thread *1))	8,1	22,5
12 (1/2" thread *1))	10,1	22,5



*1) Straight fittings with threads have an internal hexagon to suit an Allen key - refer to tables below for sizes

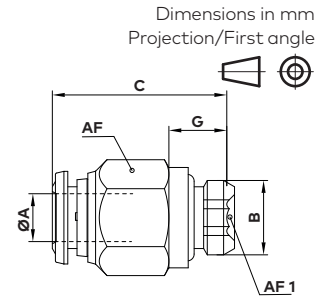
*2) Dimension with the release sleeve in the "IN" position

Straight adaptor, ISO R S0125



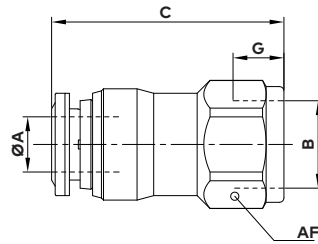
Ø A	B	C	G	AF	AF1	Weight (g)	Model
4	R1/8	19	7,5	10	3	8	S01250418
4	R1/4	23	11	14	3	18	S01250428
6	R1/8	22,5	7,5	13	4	12	S01250618
6	R1/4	24,5	11	14	4	18	S01250628
8	R1/8	25,5	7,5	14	5	15	S01250818
8	R1/4	25	11	14	6	15	S01250828
10	R1/4	30,5	11	17	7	25	S01251028
10	R3/8	28	11,5	17	8	26	S01251038
12	R3/8	33,5	11,5	21	9	43	S01251238
12	R1/2	32	14	22	10	50	S01251248

Straight adaptor, ISO G S0225



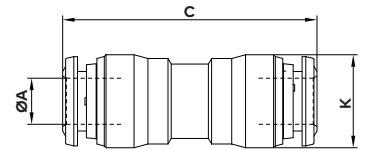
Ø A	B	C	G	Ø K	AF	AF1	Weight (g)	Model
4	M5	20	4	8	10	2	9	S02250405
4	G1/8	19,5	6	13	10	3	8	S02250418
4	G1/4	19,5	8	15	15	3	15	S02250428
6	G1/8	23,5	6	13	13	4	13	S02250618
6	G1/4	23,5	8	15	15	4	18	S02250628
8	G1/8	25,5	6	13	14	5	15	S02250818
8	G1/4	23,5	8	15	15	6	16	S02250828
10	G1/4	30	8	16	17	8	26	S02251028
10	G3/8	27	9	20	17	8	26	S02251038
12	G3/8	34	9	21	21	8	47	S02251238
12	G1/2	31	10	25	22	10	49	S02251248

Straight female adaptor ISO G S0226



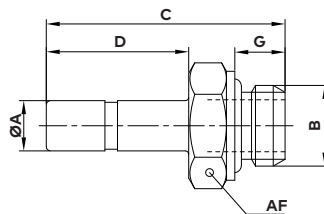
Ø A	B	C	G	AF	Weight (g)	Model
4	G1/8	13	8.5	13	12	S02260418
6	G1/8	13	8.5	13	14	S02260618
8	G1/8	15	11	15	19	S02260628
6	G1/4	16	8.5	16	19	S02260818
8	G1/4	17	11	17	23	S02260828

Straight connector S0020



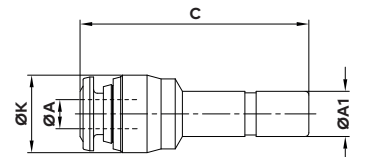
Ø A	C	Ø K	Weight (g)	Model
4	31	10,5	10	S00200400
6	35	12,5	15	S00200600
8	36,5	14,5	19	S00200800
10	42	17,5	32	S00201000
12	48	20,5	49	S00201200

Straight stem adaptor ISO G S0215

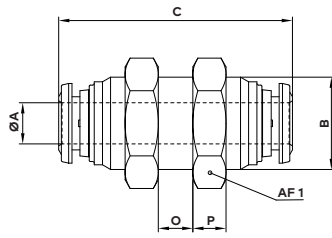


Ø A	B	C	D	G	AF	Weight (g)	Model
6	G1/8	28,5	17	6	13	9	S02150618
8	G1/4	31,5	18	8	16	23	S02150828
10	G3/8	37,5	22	9	20	26	S02151038
12	G1/2	42,5	24,5	10	24	42	S02151248

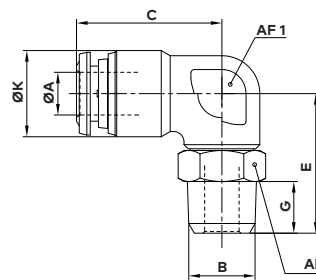
Reducing connector S0023



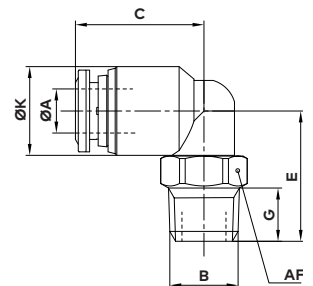
Ø A	Ø A1	Ø K	C	Weight (g)	Model
6	4	10,5	30,5	7	S00230604
8	6	12,5	34	11	S00230806
10	8	14,5	38	15	S00231008
12	10	17,5	42	23	S00231210

**Bulkhead connector
S0029**


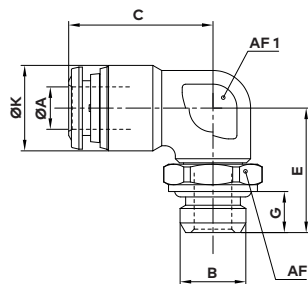
Ø A	B	C	O max.	P	AF	Weight (g)	Model
4	M12x1	31	7	4,5	17	24	S00290400
6	M14x1	35	9,5	5	17	28	S00290600
8	M16x1	37	10,5	5,5	19	37	S00290800
10	M20x1	42	12,5	6	24	67	S00291000
12	M22x1	48	16,5	6	26	88	S00291200

**Swivel elbow adaptor, ISO R
S0147**


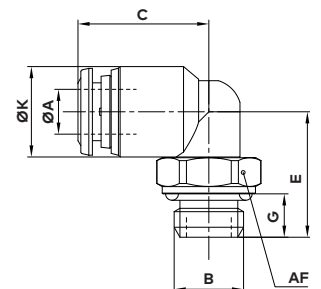
Ø A	B	C	E	G	Ø K	AF	AF1	Weight (g)	Model
4	R1/8	18	17,5	7,5	10	11	9	14	S01470418
4	R1/4	18	21,5	11	10	14	9	19	S01470428
6	R1/8	21	19,5	7,5	12,5	11	11	19	S01470618
6	R1/4	21	23,5	11	12,5	14	11	23	S01470628
8	R1/8	22,5	20	7,5	14,5	11	12	22	S01470818
8	R1/4	22,5	24	11	14,5	14	12	27	S01470828
10	R1/4	26	25,5	11	17,5	17	16	44	S01471028
10	R3/8	26	27	11,5	17,5	17	16	51	S01471038
10	R1/2	26	30,5	14	17,5	22	16	60	S01471048
12	R3/8	30,5	30,5	11,5	20,5	18	19	72	S01471238
12	R1/2	30,5	33	14	20,5	22	19	81	S01471248

**Swivel elbow adaptor, ISO R
S0147****L**


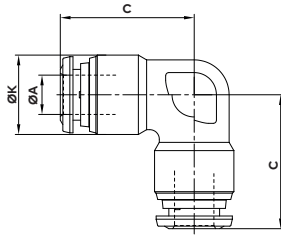
Ø A	B	C	E	G	Ø K	AF	Weight (g)	Model
4	R1/8	15,5	17	7,5	10	11	12	S01470418L
4	R1/4	15,5	21	11	10	14	20	S01470428L
6	R1/8	18	18,5	7,5	12,5	11	16	S01470618L
6	R1/4	18	22,5	11	12,5	14	24	S01470628L
8	R1/8	20	23	7,5	14,5	12	22	S01470818L
8	R1/4	20	23,5	11	14,5	14	27	S01470828L
10	R1/4	23,5	28,5	11	17,5	15	38	S01471028L
10	R3/8	23,5	26	11,5	17,5	17	42	S01471038L
10	R1/2	23,5	29,5	14	17,5	22	61	S01471048L
12	R3/8	27,5	32,5	11,5	20,5	17	64	S01471238L
12	R1/2	27,5	31,5	14	20,5	22	74	S01471248L

**Swivel elbow adaptor, ISO G
S0247**


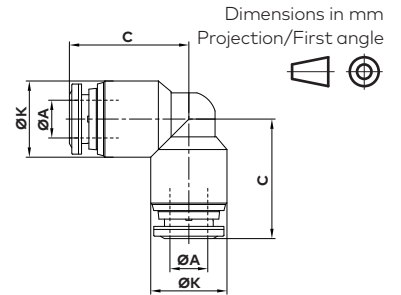
Ø A	B	C	E	G	Ø K	AF	AF1	Weight (g)	Model
4	M5	18	15	4	10	8	9	11	S02470405
4	G1/8	18	17	6	10	13	9	15	S02470418
4	G1/4	18	19,5	8	10	15	9	18	S02470428
6	G1/8	21	19	6	12,5	13	11	20	S02470618
6	G1/4	21	21,5	8	12,5	15	11	23	S02470628
8	G1/8	22,5	19,5	6	14,5	13	12	24	S02470818
8	G1/4	22,5	21,5	8	14,5	15	12	27	S02470828
10	G1/4	26	23	8	17,5	15	16	43	S02471028
10	G3/8	26	26,5	9	17,5	21	16	60	S02471038
10	G1/2	26	29	10	17,5	22	16	71	S02471048
12	G3/8	30,5	29	9	20,5	21	19	80	S02471238
12	G1/2	30,5	31,5	10	20,5	22	19	92	S02471248

**Swivel elbow adaptor, ISO G
S0247****L**


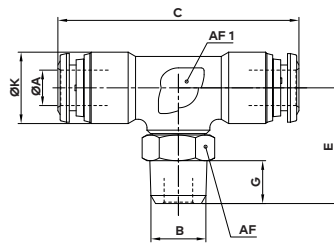
Ø A	B	C	E	G	Ø K	AF	Weight (g)	Model
4	M5	15,5	16	4	10	8	8	S02470405L
4	G1/8	15,5	16	6	10	13	12	S02470418L
4	G1/4	15,5	18,5	8	10	15	17	S02470428L
6	G1/8	18	17,5	6	12,5	13	16	S02470618L
6	G1/4	18	20	8	12,5	15	22	S02470628L
8	G1/8	20	23	6	14,5	13	23	S02470818L
8	G1/4	20	21	8	14,5	15	24	S02470828L
10	G1/4	23,5	27,5	8	17	15	36	S02471028L
10	G3/8	23,5	25	9	17	20	45	S02471038L
10	G1/2	23,5	26,5	10	17	25	60	S02471048L
12	G3/8	27,5	30,5	9	20,5	20	65	S02471238L
12	G1/2	27,5	28,5	10	20,5	25	73	S02471248L

**Elbow connector
S0040**


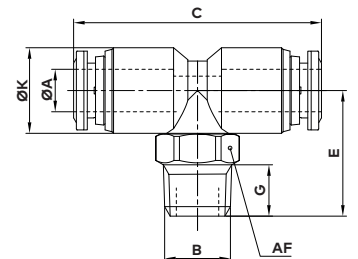
Ø A	C	Ø K	Weight (g)	Model
4	18	10	13	S00400400
6	21	12,5	20	S00400600
8	22,5	14,5	25	S00400800
10	24,55	17	48	S00401000
12	30,5	20,5	75	S00401200

**Elbow connector
S0040****L**


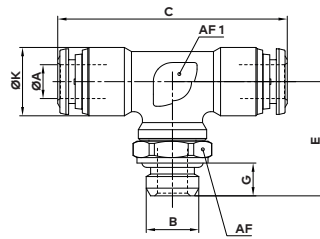
Ø A	C	Ø K	Weight (g)	Model
4	16	10	8	S00400400L
6	19,5	12,5	15	S00400600L
8	21	14,5	20	S00400800L
10	24,5	17	30	S00401000L
12	29	20,5	52	S00401200L

**Swivel tee adaptor, ISO R
S0167**


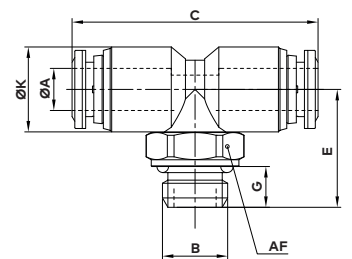
Ø A	B	C	E	G	Ø K	AF	AF1	Weight (g)	Model
4	R1/8	36	18,5	7,5	10	9	11	19	S01670418
6	R1/8	42	19,5	7,5	12,5	11	11	27	S01670618
6	R1/4	42	23,5	11	12,5	11	14	31	S01670628
8	R1/8	45	20,5	7,5	14,5	12	11	32	S01670818
8	R1/4	45	24,5	11	14,5	12	14	37	S01670828

**Swivel tee adaptor, ISO R
S0167****L**


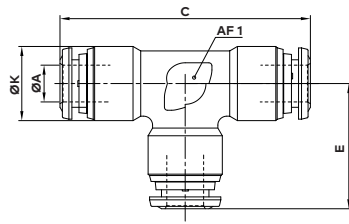
Ø A	B	C	E	G	Ø K	AF	Weight (g)	Model
4	R1/8	30,5	17	7,5	10	11	14	S01670418L
6	R1/8	36	20,5	7,5	12,5	11	20	S01670618L
6	R1/4	36	22,5	11	12,5	14	28	S01670628L
8	R1/8	40	23	7,5	14,5	12	28	S01670818L
8	R1/4	40	23,5	11	14,5	14	32	S01670828L

**Swivel tee adaptor, ISO G
S0267**


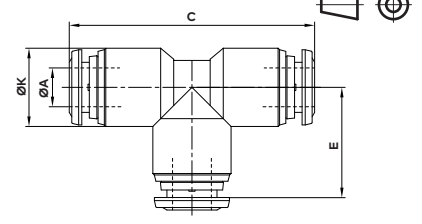
Ø A	B	C	E	G	Ø K	AF	AF1	Weight (g)	Model
4	G1/8	36	18	6	10	9	13	20	S02670418
6	G1/8	42	19	6	12,5	11	13	28	S02670618
6	G1/4	42	21,5	8	12,5	11	15	31	S02670628
8	G1/8	45	20	6	14,5	12	13	33	S02670818
8	G1/4	45	22	8	14,5	12	15	36	S02670828
10	G1/4	52	23,5	8	17,5	16	15	59	S02671028
10	G3/8	52	27	9	17,5	16	21	76	S02671038

**Swivel tee adaptor, ISO G
S0267****L**


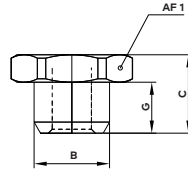
Ø A	B	C	E	G	Ø K	AF	Weight (g)	Model
4	G1/8	30,5	16	6	10	13	14	S02670418L
6	G1/8	36	17,5	6	12,5	13	20	S02670618L
6	G1/4	36	20	8	12,5	15	26	S02670628L
8	G1/8	40	23	6	14,5	13	29	S02670818L
8	G1/4	40	21	8	14,5	15	30	S02670828L
10	G1/4	47	27,5	8	17	15	44	S02671028L
10	G3/8	47	25	9	17	20	52	S02671038L

**Tee connector
S0060**


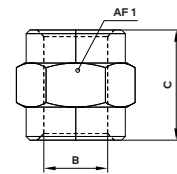
Ø A	C	E	Ø K	Weight (g)	Model
4	36	18	10	17	S00600400
6	42	21	12,5	27	S00600600
8	45	22,5	14,5	35	S00600800
10	52	26	17,5	63	S00601000
12	61	30,5	20,5	101	S00601200

**Tee connector
S0060****L**


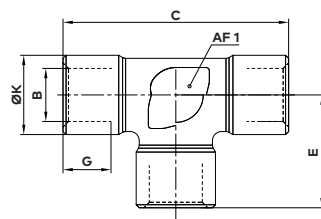
Ø A	C	E	Ø K	Weight (g)	Model
4	32	16	10	10	S00600400L
6	39	19,5	12,5	19	S00600600L
8	42	21	14,5	26	S00600800L
10	49	24,5	17	38	S00601000L
12	57,5	29	20,5	67	S00601200L

**Plug
66005**


B	C	G	AF	Weight (g)	Model
G 1/8	10	6,5	14	7	660050018
G 1/4	13	9	17	14	660050028
G 3/8	13,5	9,5	19	17	660050038
G 1/2	14,5	10	24	26	660050048

**Sleeve adaptor
66022**


B	C	Ø K	AF	Weight (g)	Model
G 1/8	15	13,5	14	11	660221818
G 1/4	22	16,5	17	21	660222828
G 3/8	24	21,5	22	33	660223838
G 1/2	30	25,5	27	62	660224848

**Tee connector
66062**


B	C	E	G	Ø K	Ø S	AF	Weight (g)	Model
G 1/8	37	18,5	8,5	18,5	6	12	32	660620018
G 1/4	49	24,5	11	24,5	8	12	50	660620028
G 3/8	54	27	12	27	11	15	77	660620038
G 1/2	64	32	15	32	15	20	146	660620048

Warning

These products are intended for use in industrial compressed air systems only. Do not use these products where pressures and temperatures can exceed those listed under »**Technical features/data**«.

Before using these products with fluids other than those specified, for non-industrial applications, life-support systems or other applications not within published specifications, consult Norgren.

Through misuse, age, or malfunction, components used in fluid power systems can fail in various modes.

The system designer is warned to consider the failure modes of all component parts used in fluid power systems and to provide adequate safeguards to prevent personal injury or damage to equipment in the event of such failure.

System designers must provide a warning to end users in the system instructional manual if protection against a failure mode cannot be adequately provided.

System designers and end users are cautioned to review specific warnings found in instruction sheets packed and shipped with these products.