



- > Precision Built
- > Lightweight
- > Compact



Technical Data

Medium

Hydraulic

Operation

Double acting (non-shock)

Operating Pressure

500 PSI

Operating Temperature

-20° F to 200° F

Cylinder Diameters

1-1/16" - 2"

Strokes

1" or greater

Ports

1/8 NPT, 1/4 NPT

Lubrication

Oil

Materials

Barrel: 304 stainless steel

End Caps & Piston: High strength aluminum alloy

Piston Rod: Hard chrome plated

Seals: Buna N hydraulic service seals with back up washers

Mounting

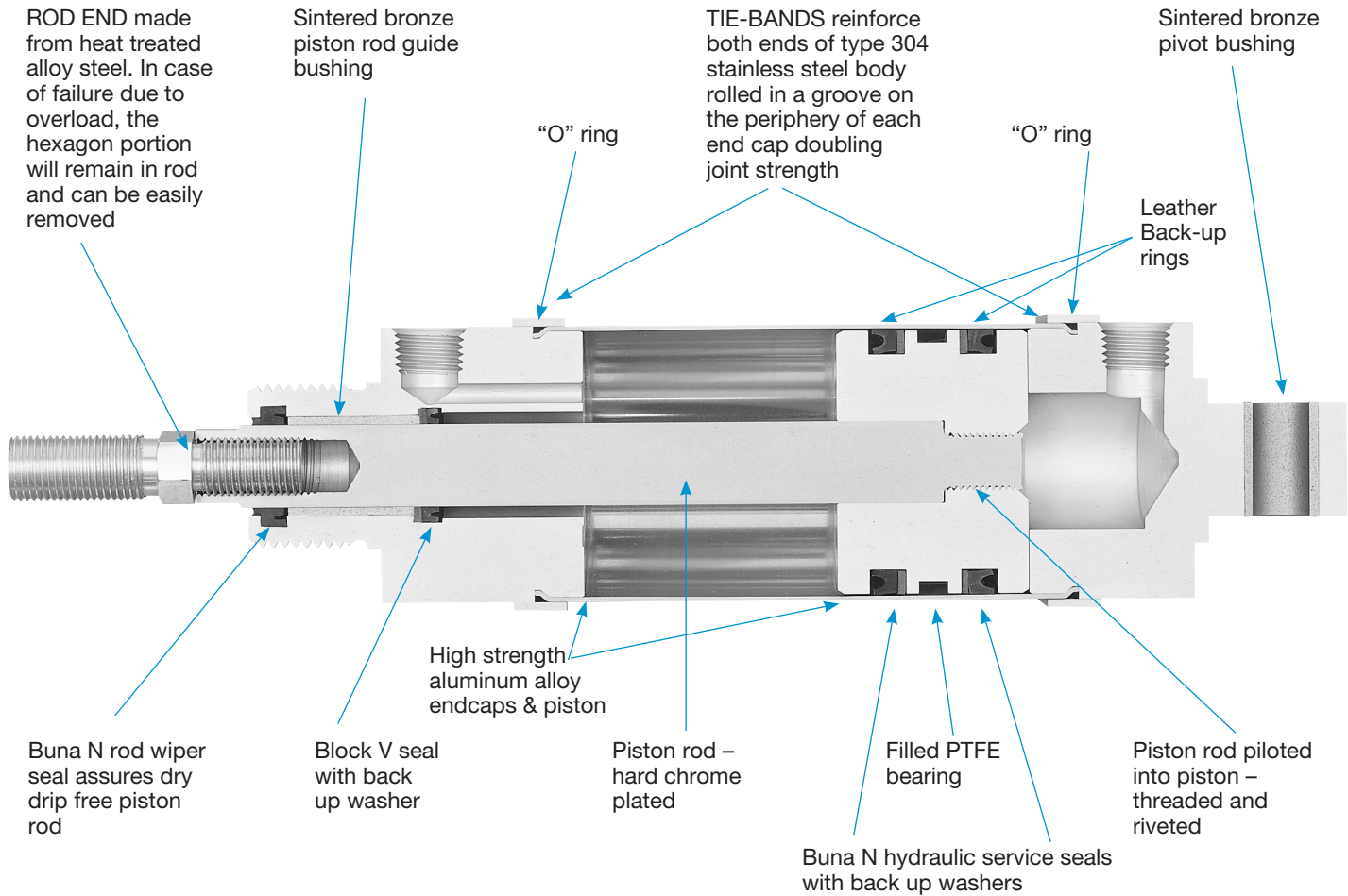
Nose, Universal, Block

Order

Type	
500 PSI Hydraulic Roundline	HR
Bore	Substitute
1-1/16"	106
1-1/2"	150
2"	200
Stroke	
In inches and decimal fractions	

HR150X10-DBR2.5

Options	Substitute
Ports rotated 90°	PL
Magnet	M
Fluoroelastomer seals for compatibility	V
Extra rod extension. Specify total additional rod extension in inches. For example, a cylinder with an extra extension of 1-1/2" would have option R1.5	RX.XX
*Enter options in alphabetical order	
Mounting	Substitute
Double Acting Nose Mount	DN
Double Acting Universal Mount	DP
Double Acting Block Mount	DB



The Hydraulic Roundline is a precision built, compact, lightweight hydraulic cylinder designed specifically for hydraulic use only, at pressures up to 500 psi.

- Rated 500 PSI Hydraulic (non-shock), Double Acting

Options

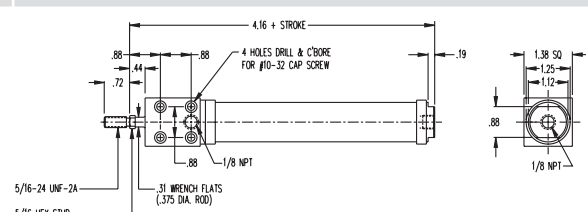
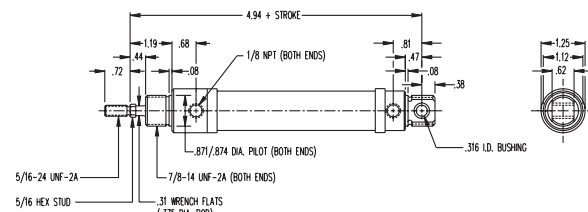
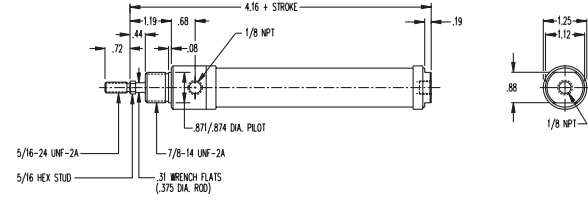
- Extra Extension (R), per inch of extension:
- Ports rotated 90 degrees (PL)
- Magnet (M)
4" stroke or greater required
Overall length increases by 0.25"
- Fluoroelastomer Seals (V)
Specify for compatibility

Dimensions

1-1/16" Bore Hydraulic Cylinders

☐ Enter Stroke Length

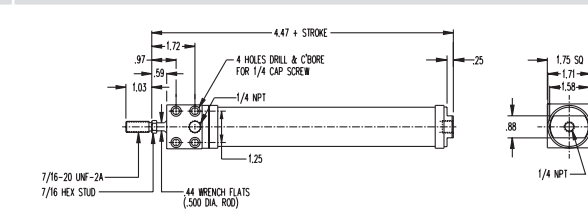
$$\text{Push Force} = .886 \times \text{PSI} \cdot \text{Pull Force} = .776 \times \text{PSI}$$

Model	Description/Weight (Lbs)	Dimensions
HR106 <input type="checkbox"/> -DB	<p>Front Block Mount</p> <p>Standard Stroke Lengths: 1", 2", 3", 4", 5", 6"</p> <p>Maximum Stroke – 12"</p> <p>Base Weight: .57</p> <p>Adder Per Inch of Stroke: .06</p>	
HR106 <input type="checkbox"/> -DP	<p>Universal Mount – Double End or Rear Pivot</p> <p>Standard Stroke Lengths: 1", 2", 3", 4", 5", 6", 7", 8", 9", 10", 11", 12"</p> <p>Maximum Stroke – 32"</p> <p>Base Weight: .50</p> <p>Adder Per Inch of Stroke: .06</p>	
HR106 <input type="checkbox"/> -DN	<p>Nose Mount</p> <p>Standard Stroke Lengths: 1", 2", 3", 4", 5", 6", 7"</p> <p>Maximum Stroke – 12"</p> <p>Base Weight: .43</p> <p>Adder Per Inch of Stroke: .06</p>	

1-1/2" Bore Hydraulic Cylinders

☐ Enter Stroke Length

$$\text{Push Force} = 1.77 \times \text{PSI} \cdot \text{Pull Force} = 1.57 \times \text{PSI}$$

Model	Description/Weight (Lbs)	Dimensions
HR150 <input type="checkbox"/> -DB	<p>Front Block Mount</p> <p>Standard Stroke Lengths: 1", 2", 3", 4", 5", 6"</p> <p>Maximum Stroke – 12"</p> <p>Base Weight: 1.00</p> <p>Adder Per Inch of Stroke: .10</p>	

1-1/2" Bore Hydraulic Cylinders

☐ Enter Stroke Length

$$\text{Push Force} = 1.77 \times \text{PSI} \cdot \text{Pull Force} = 1.57 \times \text{PSI}$$

Model	Description/Weight (Lbs)	Dimensions
HR150 <input type="checkbox"/> -DP	<p>Universal Mount – Double End or Rear Pivot</p> <p>Standard Stroke Lengths: 1", 2", 3", 4", 5", 6", 7", 8", 9", 10", 11", 12"</p> <p>Maximum Stroke – 32"</p> <p>Base Weight: .95</p> <p>Adder Per Inch of Stroke: .10</p>	<p>Side view dimensions: 5.41 + STROKE, .94, .56, .43, .1.03, .59, .41, .59, .09, 1/4 NPT (BOTH ENDS), 1.121/1.124 DIA. PILOT (BOTH ENDS), 1 1/8-12 UNF-2A (BOTH ENDS), 44 WRENCH FLATS (.500 DIA. ROD), 7/16-20 UNF-2A, 7/16 HEX STUD, .379 I.D. BUSHING.</p> <p>End view dimensions: 1.71, 1.58, .75.</p>
HR150 <input type="checkbox"/> -DN	<p>Nose Mount</p> <p>Standard Stroke Lengths: 1", 2", 3", 4", 5", 6", 7", 8", 9", 10", 11", 12"</p> <p>Maximum Stroke – 12"</p> <p>Base Weight: .84</p> <p>Adder Per Inch of Stroke: .10</p>	<p>Side view dimensions: 4.47 + STROKE, .25, .1.03, .59, .41, .59, .09, 1/4 NPT, 1.121/1.124 DIA. PILOT, 1 1/8-12 UNF-2A, 44 WRENCH FLATS (.500 DIA. ROD), 7/16-20 UNF-2A, 7/16 HEX STUD.</p> <p>End view dimensions: 1.71, 1.58, .88, 1/4 NPT.</p>

2" Bore Hydraulic Cylinders

☐ Enter Stroke Length

$$\text{Push Force} = 3.14 \times \text{PSI} \cdot \text{Pull Force} = 2.83 \times \text{PSI}$$

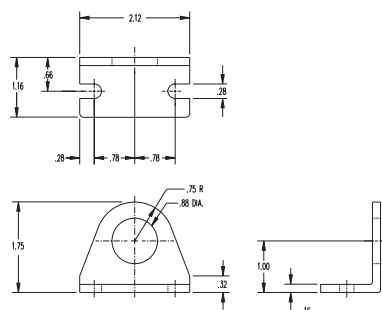
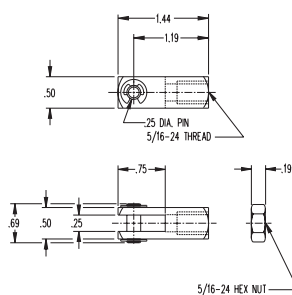
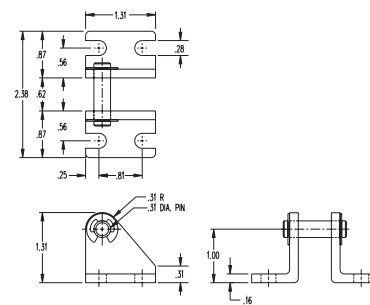
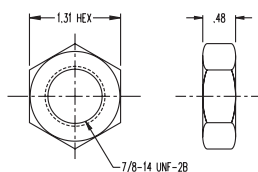
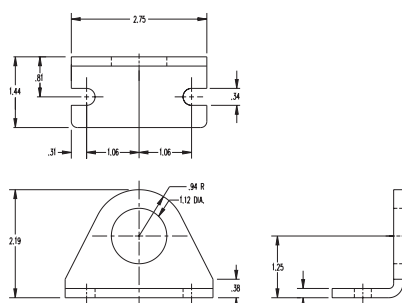
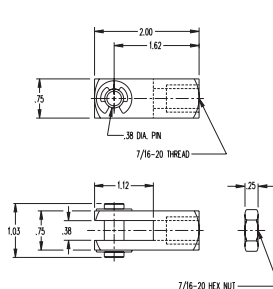
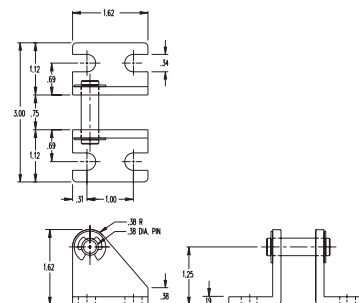
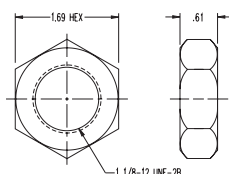
Model	Description/Weight (Lbs)	Dimensions
HR200 <input type="checkbox"/> -DB	<p>Front Block Mount</p> <p>Standard Stroke Lengths: 1", 2", 3", 4", 5", 6"</p> <p>Maximum Stroke – 12"</p> <p>Base Weight: 1.90</p> <p>Adder Per Inch of Stroke: .24</p>	<p>Side view dimensions: 5.47 + STROKE, .31, 1.00, .62, 1.12, 1/4 NPT, 1.44, 1/2-20 UNF-2A, 1/2 HEX STUD, 56 WRENCH FLATS (.625 DIA. ROD).</p> <p>End view dimensions: 2.25, .50, 2.21, 2.09, 1.25, 1/4 NPT.</p>
HR200 <input type="checkbox"/> -DP	<p>Universal Mount – Double End or Rear Pivot</p> <p>Standard Stroke Lengths: 1", 2", 3", 4", 5", 6", 7", 8", 9", 10", 11", 12"</p> <p>Maximum Stroke – 32"</p> <p>Base Weight: 1.75</p> <p>Adder Per Inch of Stroke: .24</p>	<p>Side view dimensions: 6.50 + STROKE, .1.09, .66, .11, .50, .1.62, .72, .11, 1/4 NPT (BOTH ENDS), 1.246/1.250 DIA. PILOT (BOTH ENDS), 1 1/4-12 UNF-2A (BOTH ENDS), 56 WRENCH FLATS (.625 DIA. ROD), 1/2-20 UNF-2A, 1/2 HEX STUD, .438 I.D. BUSHING.</p> <p>End view dimensions: 2.21, 2.09, .88, 1/4 NPT.</p>

2" Bore Hydraulic Cylinders

☐ Enter Stroke Length

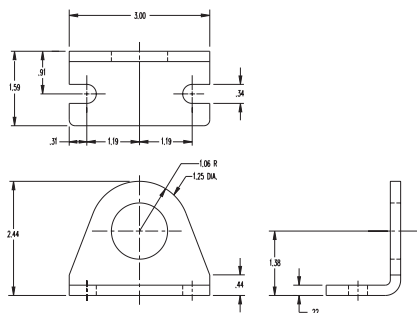
$$\text{Push Force} = 3.14 \times \text{PSI} \cdot \text{Pull Force} = 2.83 \times \text{PSI}$$

Model	Description/Weight (Lbs)	Dimensions
HR200 <input type="checkbox"/> -DN	<p>Nose Mount</p> <p>Standard Stroke Lengths: 1", 2", 3", 4", 5", 6"</p> <p>Maximum Stroke – 12"</p> <p>Base Weight: 1.63</p> <p>Adder Per Inch of Stroke: .24</p>	<p>Side view dimensions: 5.47 + STROKE, .31, .1.62, .72, .11, 1/4 NPT, 1.246/1.249 DIA. PILOT, 1 1/4-12 UNF-2A, 56 WRENCH FLATS (.625 DIA. ROD), 1/2-20 UNF-2A, 1/2 HEX STUD.</p> <p>End view dimensions: 2.21, 2.09, 1.25, 1/4 NPT.</p>

1-1/16" Bore Accessories
ZRE-FB-106

Mounting Bracket
ZRE-RC-106

Rod Clevis
ZRE-PB2-106

Pivot Bracket
RE-MN-106

Mounting Nut
1-1/2" Bore Accessories
ZRE-FB-150

Mounting Bracket
ZRE-RC-150

Rod Clevis
ZRE-PB2-150

Pivot Bracket
ZRE-MN-150

Mounting Nut

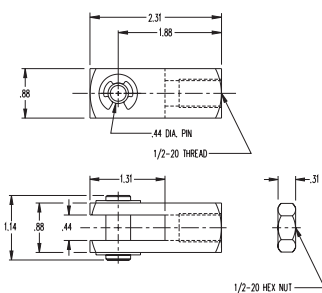
2" Bore Accessories

ZRE-FB-200



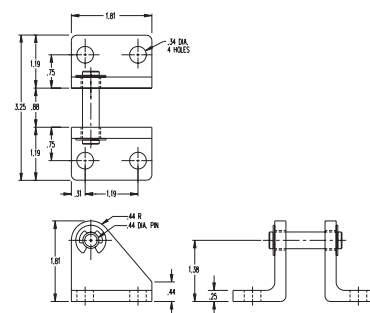
Mounting Bracket

ZRE-RC-200



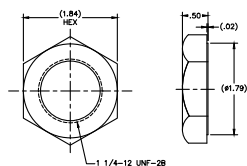
Rod Clevis

ZRE-PB2-200



Pivot Bracket

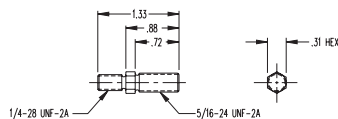
RE-MN-200



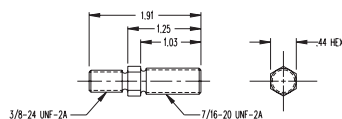
Mounting Nut

Hex-Stud

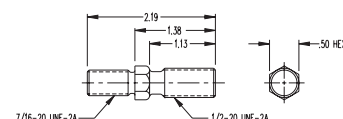
**1-1/16" Bore
ZRE-RS-106**



**1-1/2" Bore
ZRE-RS-150**



**2" Bore
ZRE-RS-200**



Warning

Improper selection, misuse, age or malfunction of components used in systems can cause failure in various modes. The system designer is warned to consider the failure modes of all component parts and to provide adequate safeguards to prevent personal injury or damage to equipment or property in the event of such failure modes. System designers and end users are cautioned to consult instruction sheets and specifications available from the factory. The system designer/end user is responsible for verifying that all requirements for the application are met.

Warranty

The products described herein are warranted subject to seller's Standard Terms and Condition of Sale, available at seller's website.

⚠ WARNING: This product can expose you to chemicals including lead, which is known to the State of California to cause cancer. For more information, go to www.p65warnings.ca.gov.