

# 5/2 and 5/3 Directional Control Valves



Nominal size 4  
 Solenoid pilot operated spool valves  
 Port size G 1/8  
 Manifold plate system G 1/4

**OBSOLETE DOCUMENT**  
 Technical Reference Only

## Description

Solenoid valves for filtered, lubricated or non-lubricated air

Flow direction: Fixed  
 Temperature range: -10 to +60 °C  
 Material  
 – Valve body: Anodized aluminium  
 – Seals: NBR

## Features

- Standard manual override
- Low power consumption (2 W)
- Mounting position optional
- Compact design
- Non-overlapping switching system
- Manifold system provided with ducted exhaust and pilot air
- Easy to mount
- Sturdy aluminium body
- Throttleable at ports 3 and 5



## Parameters



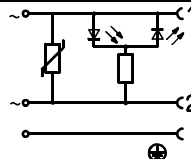

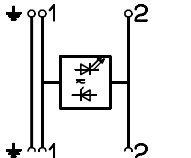
Symbol	Nom. size	Port size	Operating pressure [bar]		Flow volume <sup>1)</sup> Q <sub>v</sub> [l/min]	Switching time <sup>1)</sup> approx. [ms]		Total weight [kg]	Dimensional drawing No.	Cat. No. <sup>2)</sup>	
			min.	max.		ON	OFF			Valve	Solenoid <sup>3)</sup>
	4	G 1/8	2	10	500	12	12	0.12	01	<b>2621000.9000</b>	
	4	G 1/8	1.5	10	500	12	12	0.17	02	<b>2621200.9000</b>	
	4	G 1/8	2.2	10	250	12	12	0.19	02	<b>2621300.9000</b>	
	4	G 1/8	2.2	10	400	12	12	0.19	02	<b>2621400.9000</b>	

<sup>1)</sup> At 6 bar with DC solenoid acc. VDI 3290  
<sup>2)</sup> Connector to be ordered separately  
<sup>3)</sup> Voltage [V] and frequency [Hz] to be stated in order  
<sup>4)</sup> At 6 bar Δp = 1 bar

**Further versions available on request**

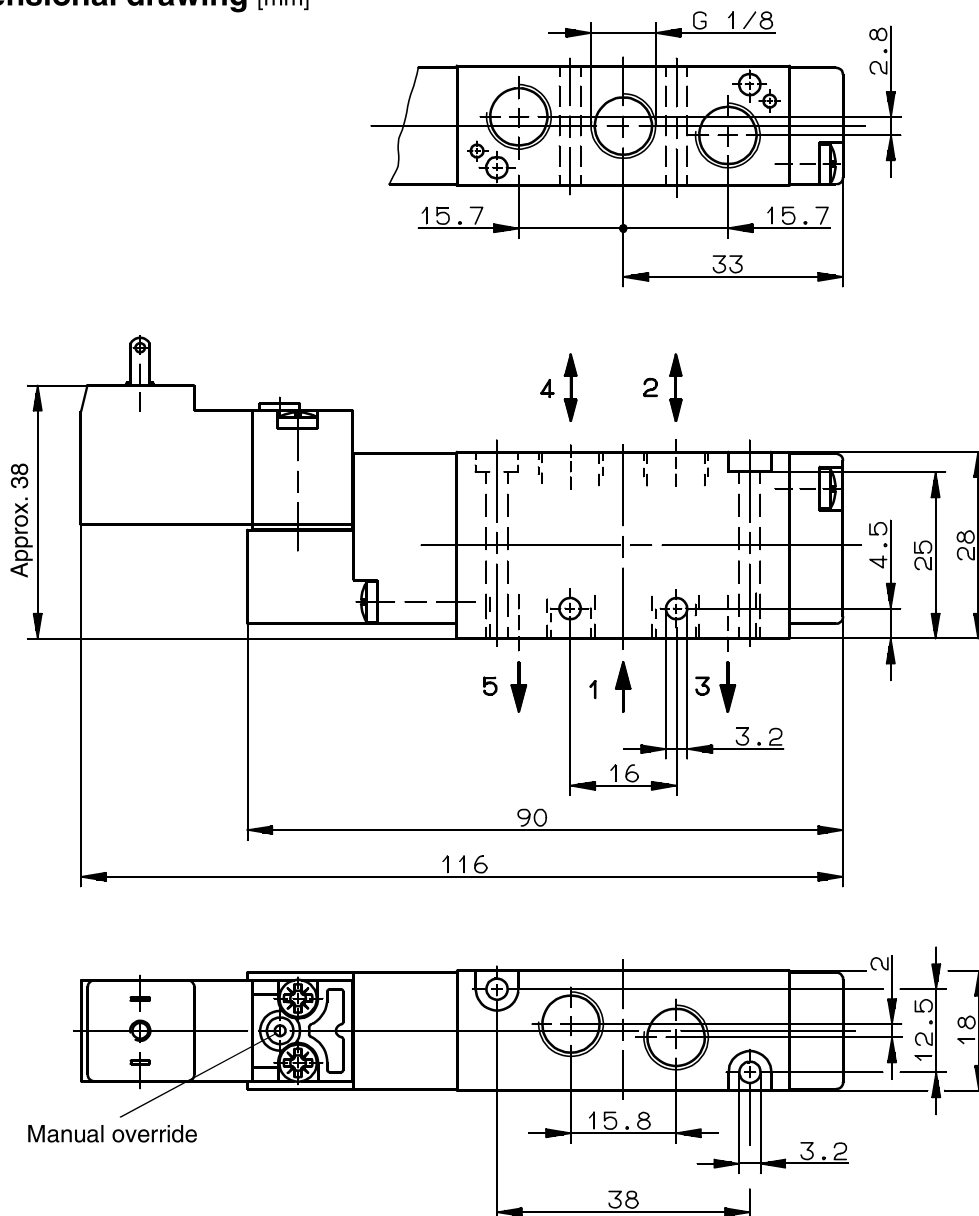
Power consumption 1 W max. 8 bar

## Connectors for solenoids acc. to industrial standards. Degree of protection: IP 65

Picture	Description	Electrical circuit diagram	Operating temperature [°C]	Operating voltage [V]	Cat. No.
	Connector acc. to industrial standards Space between contacts: 9.4 mm Without cable Without LED		-40 ... +90	12 ... 110 AC 12 ... 130 DC	<b>0664974</b>
	Connector acc. to industrial standards Space between contacts: 9.4 mm With LED With varistor		-40 ... +90	15 ... 30 AC/DC	<b>0680717</b>
	Connector acc. to industrial standards Space between contacts: 9.4 mm With cable, 3 m With LED and Zener diode		-5 ... +60	24 AC/DC	<b>0681415</b>

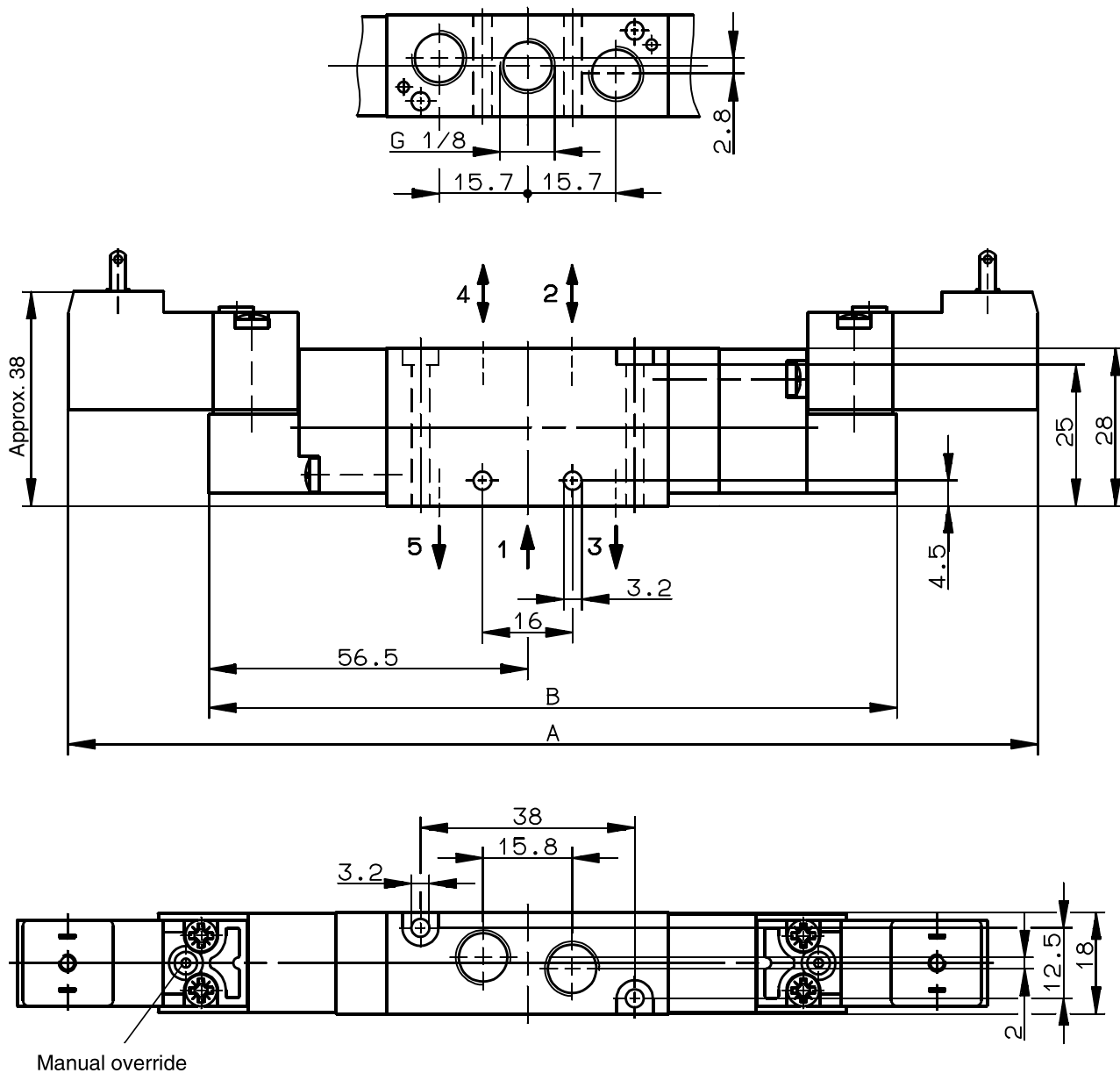
### Dimensional drawing [mm]

01



# Dimensional drawing [mm]

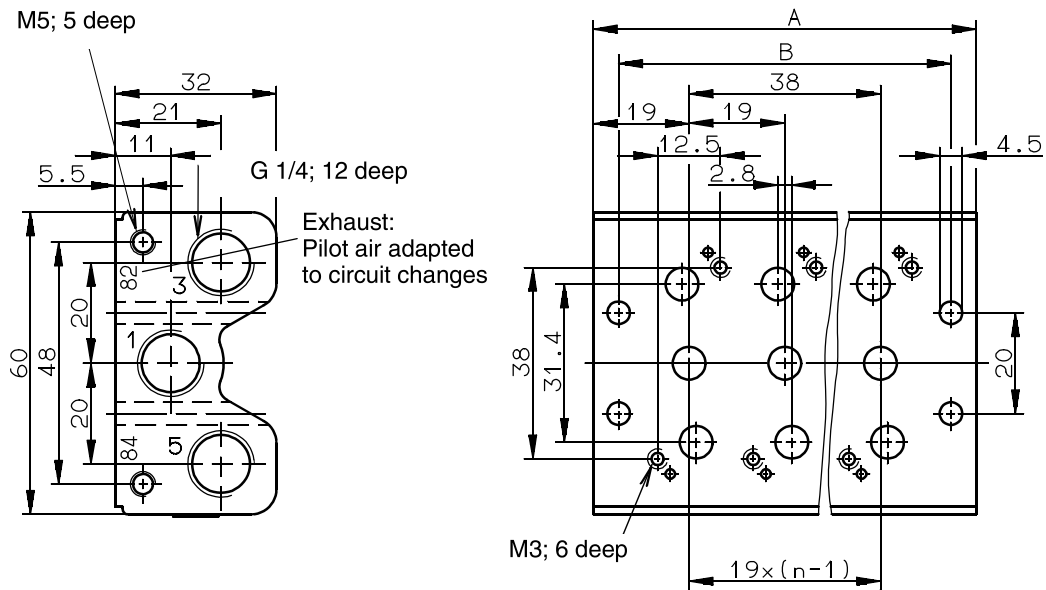
02



## Dimensional table [mm]

Cat. No.	A	B
<b>2621200.9000</b>	165	113
<b>2621300.9000</b>	172	122
<b>2621400.9000</b>	172	122

## Manifold plates [mm]



## Dimensional table [mm]

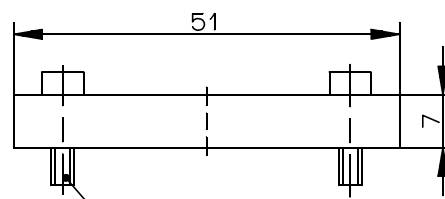
Cat. No.	for n valves <sup>1)</sup>	A	B
<b>2629322</b>	2	57	47
<b>2629323</b>	3	76	66
<b>2629324</b>	4	95	85
<b>2629325</b>	5	114	104
<b>2629326</b>	6	133	123
<b>2629327</b>	7	152	142
<b>2629328</b>	8	171	161
<b>2629329</b>	9	190	180
<b>2629330</b>	10	209	199

<sup>1)</sup> n = Number of valve locations

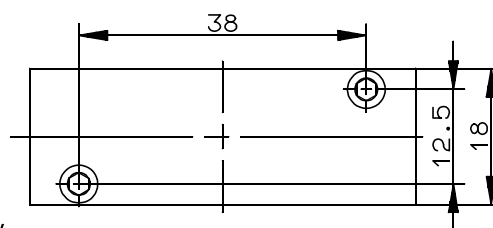
Seals and mounting parts included in delivery (unpacked)

## Blanking plate assly.

Cat. No.: **0544439**



2 socket head screws DIN 912 M3 x 12



Socket head screws included in delivery.