

Check Valves



Nominal sizes 2 to 25
 Pneumatically actuated
 Port sizes M 5 and G 1/8 to G 1
 Operating pressure: (see parameters)

Catalog Register
P 12

Publication 7501062.06.02.81



Description

Check valves for filtered, lubricated or non-lubricated air

Temperature range: -10 to +60°C



Features

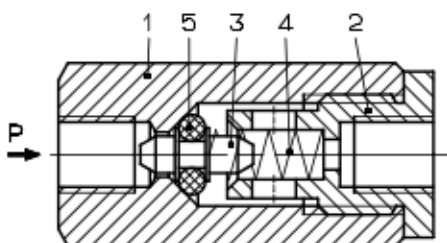
- Time-tested sealing system
- Low opening pressure
- High flow rate

Parameters

Symbol	Nominal size	Port size	Operating pressure [bar]		k_v value (c_v(US) = $k_v \times 1.2$)	Sectional drawing No.	Dimensional drawing No.	Weight [kg]	Cat. No.
			min.	max.					
	2	M 5	0.1	10	0.03	01	01	0.01	4055600
	4	G 1/8	0.1	16	0.53	02	01	0.03	4055101
	6	G 1/4	0.1	16	1.0	02	01	0.06	4055201
	15	G 1/2	0.1	16	4.3	02	01	0.18	4055301
	20	G 3/4	0.1	16	5.0	02	01	0.34	4055401
	25	G 1	0.1	16	14.9	02	01	0.55	4055501

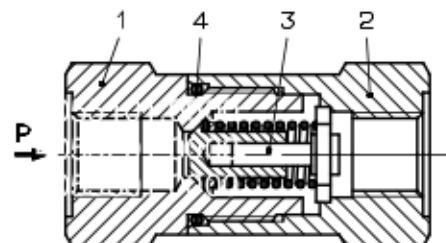
Sectional drawings

01



- 1 Body
- 2 Threaded connection
- 3 Seal retainer
- 4 Spring
- 5 O-ring

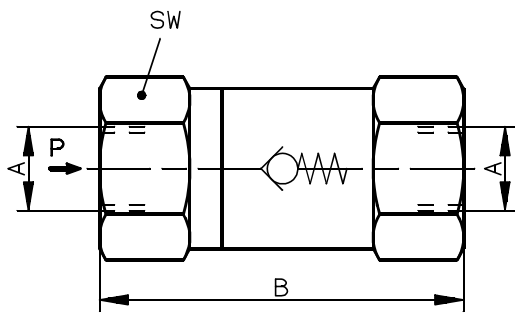
02



- 1 Threaded connection
- 2 Threaded connection
- 3 Inner parts
- 4 O-ring

Dimensional drawing

01



Dimensional table [mm]

Cat. No.	A	B	SW
4055600	M 5	25	10
4055101	G 1/8	43	19
4055201	G 1/4	59	24
4055301	G 1/2	80	36
4055401	G 3/4	90	46
4055501	G 1	107	55