

# Exhaust Throttles



With and without silencer  
 External thread G 1/8 to G 1/2  
 Operating pressure 0 to 10 bar

Catalog Register  
 P 12

Publication 7501069.06.03.81



## Description (standard unit)

Exhaust throttle for filtered lubricated or dry air

Temperature range: - 10 to + 60 °C



## Features

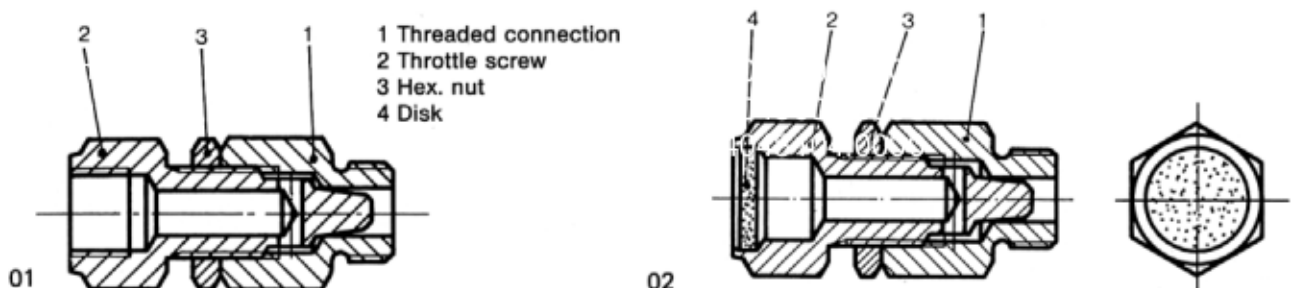
- Inexpensive speed control
- For separate forward- and return stroke
- Simple installation
- Integrated noise protection

## Parameters

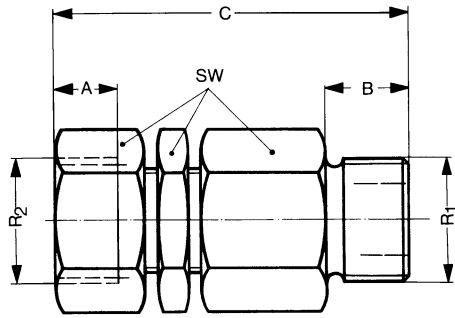
Nominal size	Port size	Operating pressure [bar]		Weight [kg]	Sectional drawing No.	Dimensional drawing No.	Cat. No.
		min.	max.				
4	G 1/8	0	10	0.025	01	03	4048004
6	G 1/4	0	10	0.060	01	03	4048104
12	G 1/2	0	10	0.190	01	03	4048204
4	G 1/8	0	10	0.025	02	03	4048005
6	G 1/4	0	10	0.060	02	03	4048105

The threads, here characterized by R to DIN 259, correspond to the straight threads G to ISO 228/1.

## Sectional drawings



## Dimensional drawings



Cat. No.	R <sub>1</sub>	R <sub>2</sub>	SW	A	B	C
Without silencer						
<b>4048004</b>	G1/8	G1/8	12	6	6,5	37
<b>4048104</b>	G1/4	G1/4	17	8,5	8	42
<b>4048204</b>	G1/2	G1/2	27	10,5	10	61
With silencer						
<b>4048005</b>	G1/8	—	12	—	6,5	37
<b>4048105</b>	G1/4	—	17	—	8	42