

# Throttle check valves Nominal sizes 4 and 6



Manually actuated  
Port sizes R 1/8 and R 1/4  
Operating pressure 0 to 10 bar

Sales range Pneumatics  
P 417 MD  
Series 40400

Publication 7501100.06.09.82



## Description

Throttle check valves for filtered, lubricated or non-lubricated air

Temperature range: -10 to +60 °C



Mounts on cylinder



Mounts on valve

## Features

- Precise adjustment
- Large control range
- Small design
- High flow rate

## Parameters

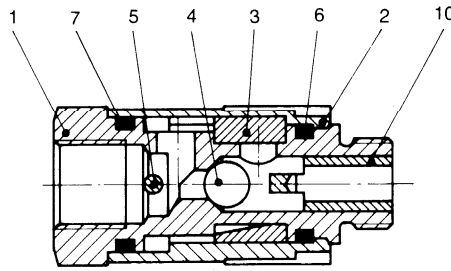
Symbol	Nominal size	Port size	Operating pressure [bar]		Weight [kg]	Sectional drawing No.	Dimensional drawing No.	Cat. No.
			min.	max.				
	Mounting on cylinder							
	4	R 1/8	0	10	0,030	01	03	<b>4040135</b>
	6	R 1/4	0	10	0,030	01	03	<b>4040235</b>
	Mounting on valve							
	4	R 1/8	0	10	0,030	02	03	<b>4040130</b>
	6	R 1/4	0	10	0,030	02	03	<b>4040230</b>

The threads, here characterized by R to DIN 259, correspond to the straight threads G to ISO 228/.

Additional designs with plug-in connection on request

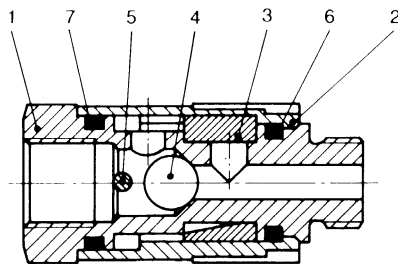
## Sectional drawings

**01 (Mounting on cylinder)**



- 1 Hollow screw
- 2 Body
- 3 Ring
- 4 Ball
- 5 Pin
- 6 O-ring
- 7 O-ring
- 10 Bush

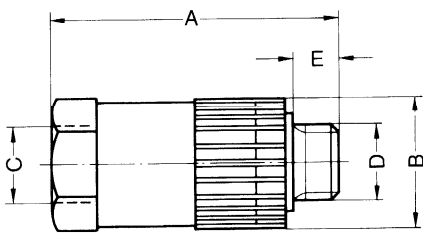
**02 (Mounting on valve)**



- 1 Hollow screw
- 2 Body
- 3 Ring
- 4 Ball
- 5 Pin
- 6 O-ring
- 7 O-ring

## Dimensional drawing

**03**



Cat. No.	A	B	C	D	E
<b>4040130</b>	38	17,4	R 1/8	R 1/8	6
<b>4040135</b>	38	17,4	R 1/8	R 1/8	6
<b>4040230</b>	50	22,2	R 1/4	R 1/4	8
<b>4040235</b>	50	22,2	R 1/4	R 1/4	8