

# Rapid Pressure Release Module



Nominal sizes 8 and 12  
Pneumatically operated  
NAMUR pattern connection/internal thread  
Operating pressure 0.5 to 10 bar

Catalog Register  
**A21, P12**

Publication 7502144.06.06.94

**OBSOLETE  
DOCUMENT**

Technical  
Reference  
Only

## Description

Rapid pressure release module for filtered, lubricated<sup>1)</sup> or oilfree compressed air, instrument air, nitrogen or other neutral fluids.

Temperature range: -25 to +60 °C

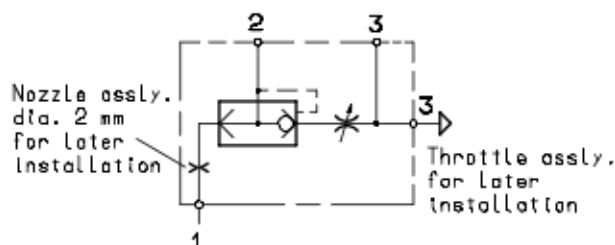
Material: Aluminium with  
hardcoat exterior coating

Seals: NBR (Perbunan)



## Features

- Integrated exhaust air feedback
- Optional throttle for use as throttle check valve module
- For outdoor use and extreme environmental conditions



## Parameters

Nom. size	Pressure connection			Operating pressure[bar]		Weight [kg]	Sectional drawing No.	Dimensional drawing No.	Cat. No.
	Air inlet	Work pressure	Air outlet	min.	max.				
8	G 1/4 NAMUR pattern	NAMUR pattern flange	G 3/8	0.5	10	0.32	01	01	<b>4050218<sup>2)</sup></b>
12	G 1/4 NAMUR pattern	NAMUR pattern flange	G 1/2	0.5	10	0.72	02	02	<b>4050318<sup>3)</sup></b>

## Accessories

Description	for size	Cat. No.
Nozzle dia. 2mm for inlet throttling	8 and 12	<b>0542169</b>
Throttle assly. for outlet throttling	8	<b>0542250</b>
Union for outlet throttling (Nozzle dia. 1.5mm can be bored to suit the specific application)	12	<b>0544666</b>

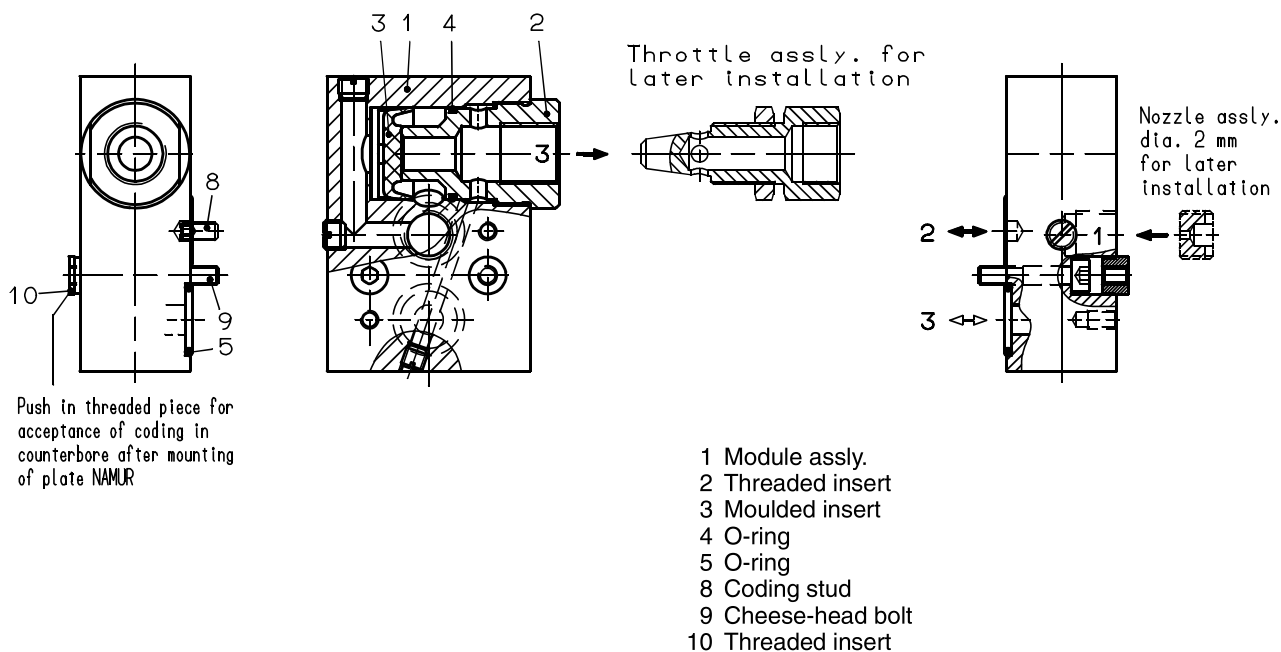
<sup>1)</sup> Oil recommendation: Shell Hydrol DO 32, ESSO Febis K 32 (as of July 1992) or comparable oils with DVI values < 8 (DIN 53521) and ISO viscosity class 32-46 (DIN 51519).

<sup>2)</sup> Combined with valves 2401190 or 2401191 the module has been approved by DVGW.

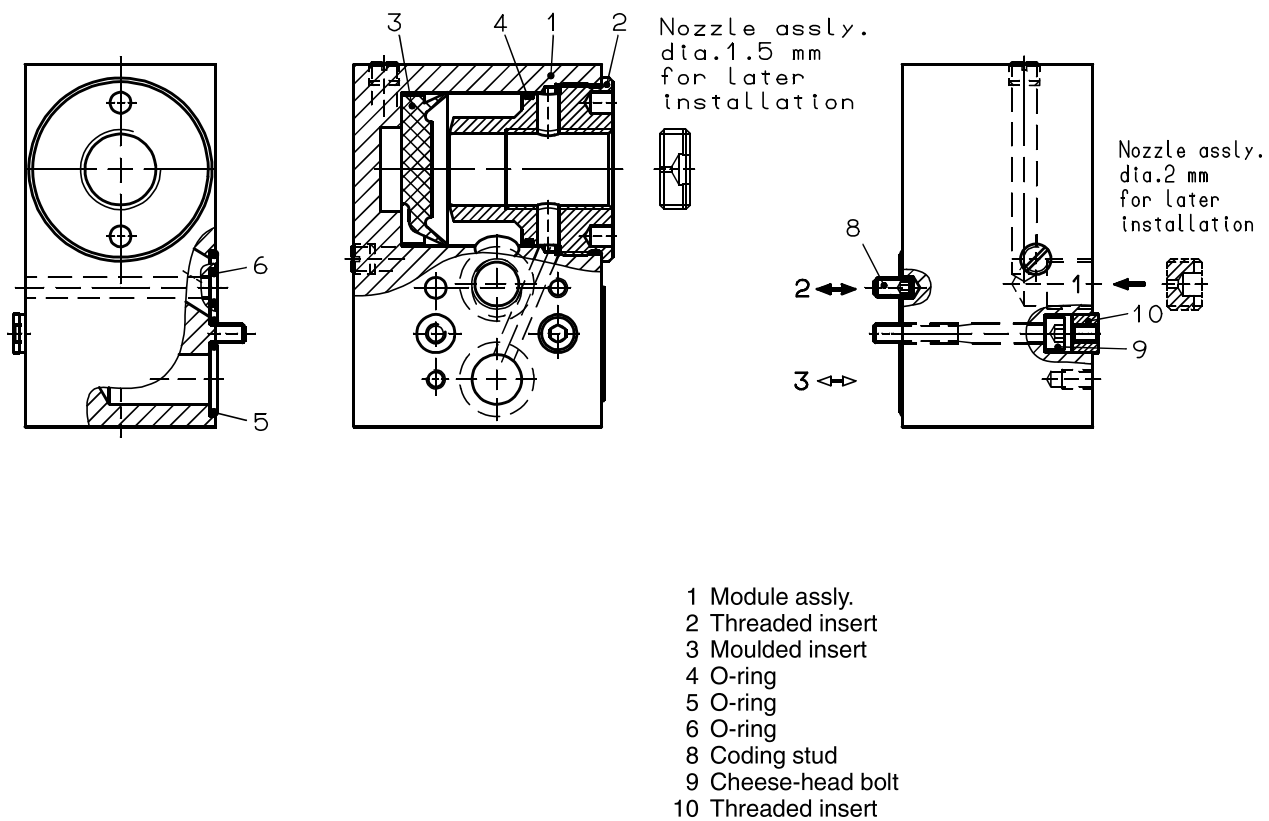
<sup>3)</sup> Combined with valve 2401109 integrated air inlet supply.

## Sectional drawings

01

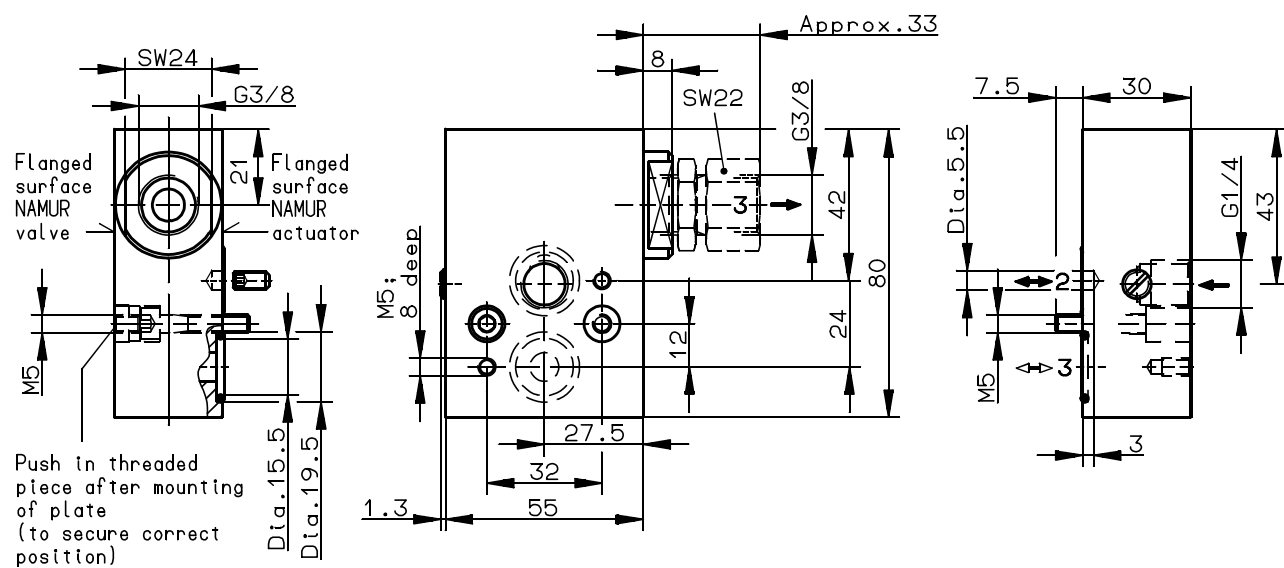


02

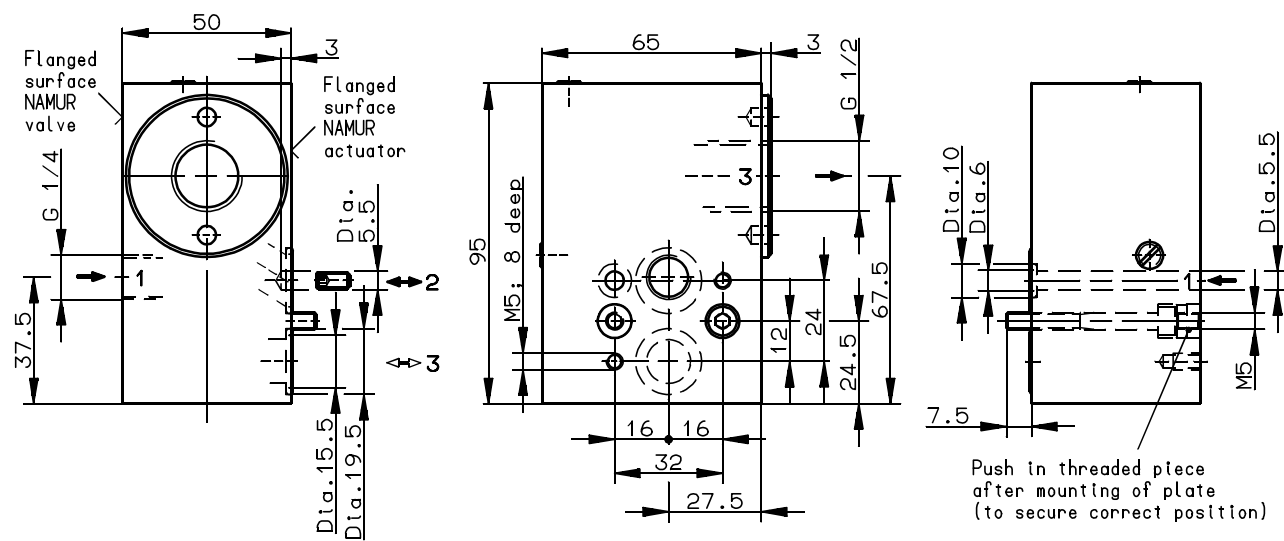


## Dimensional drawings

01



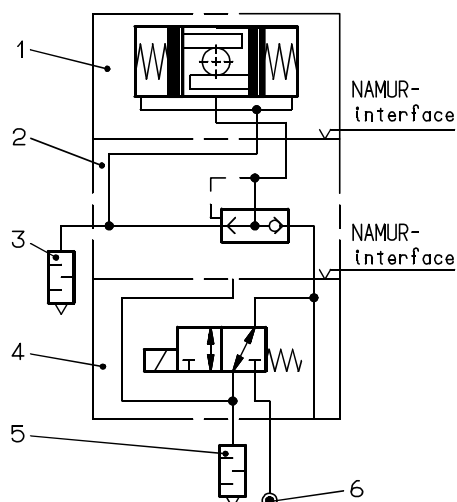
02



## Applications

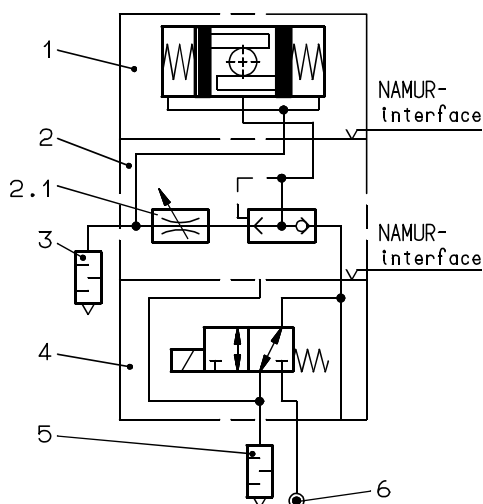
### As rapid pressure release module

Control of a pneumatic swivel drive by means of a NAMUR 3/2 directional control solenoid valve, rapid pressure release module as intermediate unit. Exhaust air feedback into spring chamber via the NAMUR rapid pressure release module.



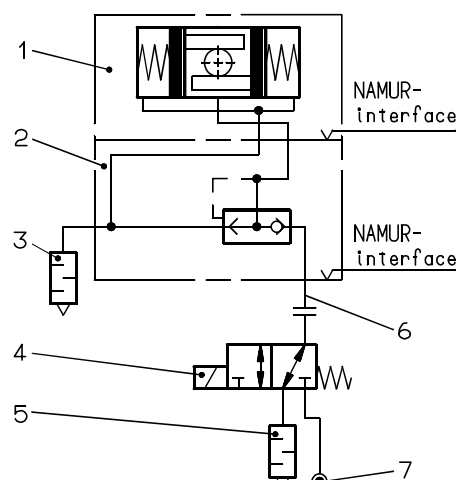
### As throttle check valve module

Control of a pneumatic swivel drive by means of a NAMUR 3/2 directional control solenoid valve, rapid pressure release module as intermediate unit. Exhaust air feedback into spring chamber via the NAMUR rapid pressure release module. Additional option of exhaust air throttling with add-on throttle set.

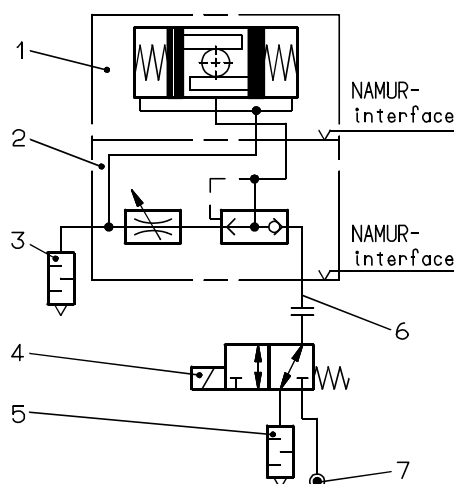


Item	Description	Cat. No.
1	Swivel drive	
2	NAMUR rapid pressure release module	<b>4050218</b>
2.1	Throttle insert assly.	<b>0542250</b>
3	Silencer G 3/8	<b>0014700</b>
4	NAMUR 3/2 directional control valve, electromagnetically controlled	<b>2401190/91</b>
5	Silencer G 1/4	<b>0014600</b>
6	Compressed air supply	

Control of a pneumatic swivel drive by means of a NAMUR rapid pressure release module, externally mounted solenoid control valve. Exhaust air feedback into spring chamber via the NAMUR rapid pressure release module.



Control of a pneumatic swivel drive by means of NAMUR rapid pressure release module, externally mounted solenoid control valve. Exhaust air feedback into the spring chamber via the NAMUR rapid pressure release module. Additional option of exhaust air throttling by means of add-on throttle insert.



Item	Description	Cat. No.
1	Swivel drive	
2	NAMUR rapid pressure release module	<b>4050218</b>
2.1	Throttle insert assly.	<b>0542250</b>
3	Silencer G 3/8	<b>0014700</b>
4	3/2 directional control valve, electromagnetically controlled	<b>2401149</b>
5	Silencer G 1/4	<b>0014600</b>
6	External supply line	
7	Compressed air supply	