

Pilot Operated Check Valves



Nominal sizes 4, 6 and 8

Poppet valve

Connection: Internal thread or quick-acting plug connection

Control pressure: 4.5 to 8 bar

Operating pressure: – 0.9 to 10 bar

Catalog Register

P 12

Publication 7502186.06.08.97



Description

Pilot operated check valve for filtered, lubricated¹⁾ or non-lubricated air

Temperature range: –15 to +60°C

Material:

– Body: Nonferrous alloy

– Seal: PU/NBR



Features

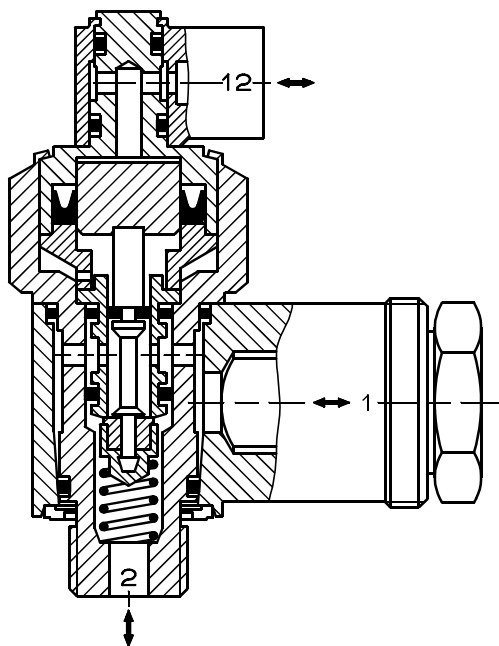
- Immediate shut-off of cylinder in the event of pressure loss
- Can be directly mounted on cylinder
- High operational safety
- Poppet valve
- Pressure-assisted reset
- Swivelling connection of control and working pressure ports

Parameters

Symbol	Size	Port size	Swivelling connection		Control air connection		Operating pressure [bar]		Control pressure [bar]		Flow rate Q _v [l/min]	Weight [kg]	Cat. No.	
			Internal thread	Hose OD [mm]	Internal thread	Hose OD [mm]	min.	max.	min.	max.				
	4	G 1/4	G 1/4	–	M5	–	–0.9	10	4.5	8	550	0.18	4055227	
	6	G 3/8	G 3/8	–	M5	–	–0.9	10	4.5	8	1300	0.26	4055627	
	8	G 1/2	G 1/2	–	M5	–	–0.9	10	4.5	8	2300	0.42	4055327	
	4	G 1/4	–	8	–	4	–	–0.9	10	4.5	8	550	0.18	4055226
	6	G 3/8	–	10	–	4	–	–0.9	10	4.5	8	1300	0.26	4055626
	8	G 1/2	–	12	–	4	–	–0.9	10	4.5	8	2300	0.42	4055326

¹⁾ Oil recommendation: Shell Hydrol DO 32, ESSO Febis K 32 (as of July 1992) or comparable oils with DVI values < 8 (DIN 53521) and ISO viscosity class 32-46 (DIN 51519).

Sectional drawing



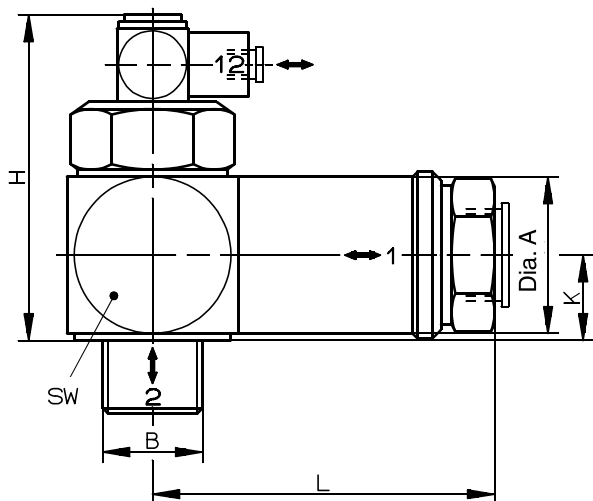
Mode of operation

Initial position

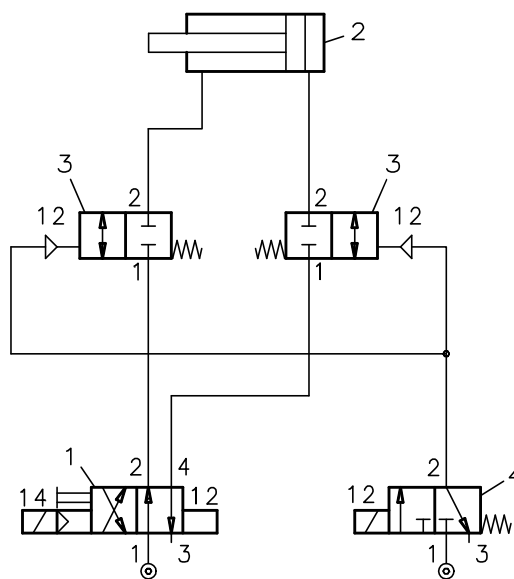
The pilot controlled check valves are screwed onto the cylinder. The connections between main valve (1) and cylinder (2), and between control valve (4) and check valve (3) are pressurized. The cylinder (2) can be advanced or retracted by means of the main valve (1).

By switching the control valve (4) or in the event of pressure loss, the diaphragm in the check valve is depressurized and the valve closes. The air is locked in the cylinder.

Dimensional drawing [mm]



Example of use



Dimensional table [mm]

Cat. No.	Dia. A	B	H	K	L	SW
4055227	22	G 1/4	53	13.5	43.5	24
4055627	27	G 3/8	53	16.5	55.5	24
4055327	31	G 1/2	66	24	63	33
4055226	22	G 1/4	53	13.5	39	24
4055626	27	G 3/8	53	16.5	50	24
4055326	31	G 1/2	66	24	66	33

- 1 Main valve
- 2 Cylinder
- 3 Pilot controlled check valve
- 4 Control valve