

Pilot Operated Check Valves in Nominal Sizes 4 to 12



Pneumatically operated seat valves

Internal thread G 1/8 to G 1/2
Operating pressure 1 to 12 bar

Catalog Register
P12

Publication 7502963.06.05.93



Description

Check valves for filtered, lubricated¹⁾
or nonlubricated air

Flow direction: Fixed
Temperature range: -10 to +60°C
Material: Body: Zink die-casting
Seals: NBR (Perbunan)
Spring: Steel



Features

- Reliable sealing system
- High flow rate
- Choice of mounting positions
- Opening pressures according to following table

Nominal sizes

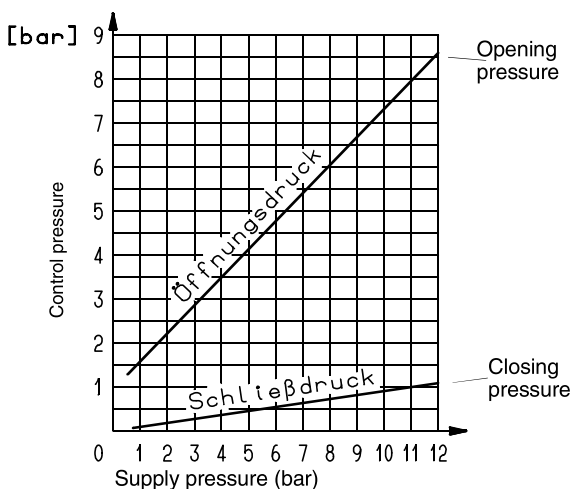
Symbol	Port size	Operating pressure [bar]		Opening pressure [bar] Table No.	Total weight [kg]	Nominal flow rate [l/min]		Cat. No.
		min.	max.			1 - 2	2 - 1	
	G 1/8	1	12	01	0.095	480	400	4055128
	G 1/4	1	12	02	0.095	510	400	4055228
	G 3/8	1	12	03	0.230	2200	2200	4055628
	G 1/2	1	12	04	0.230	2300	2200	4055328

¹⁾ Oil recommendation: Shell Hydrol DO 32, ESSO Febis K 32 (as of July 1992) or comparable oils with DVI values < 8 (DIN 53521) and ISO viscosity class 32-46 (DIN 51519).

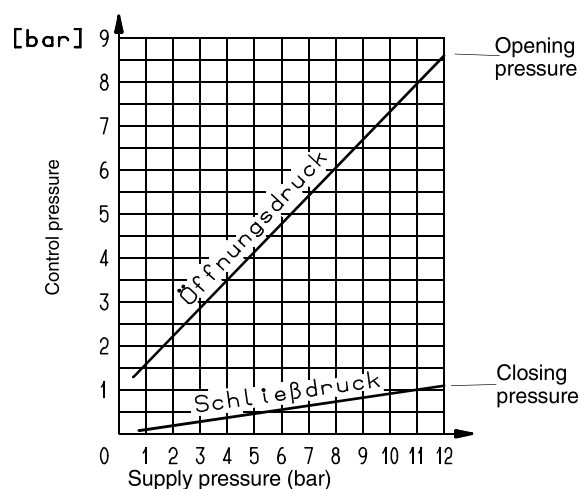
Characteristic curves

Table of opening pressures

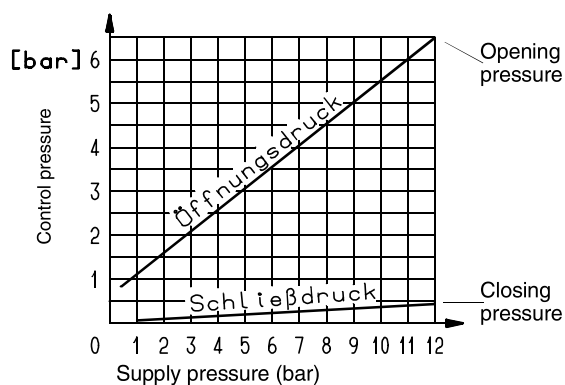
01



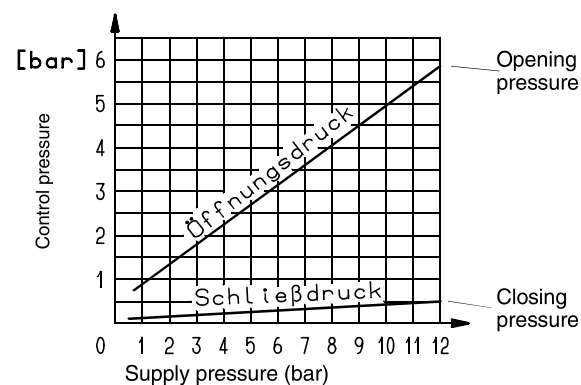
02



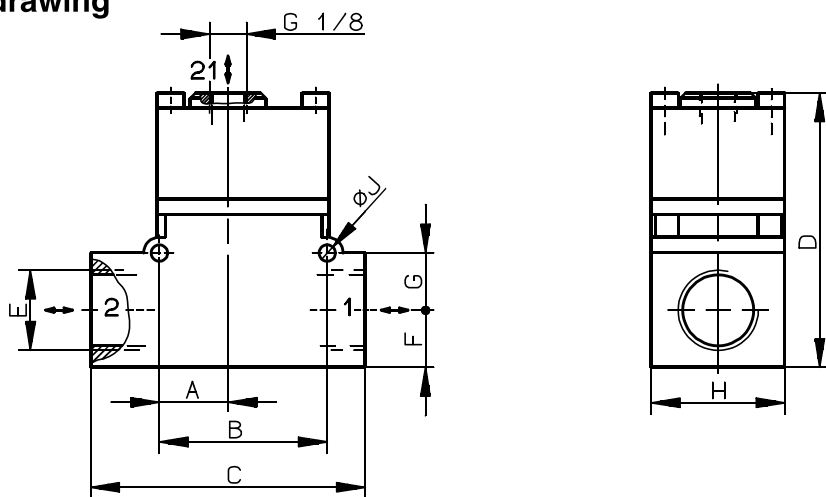
03



04



Dimensional drawing



Dimensional table [mm]

Cat. No.	A	B	C	D	E	F	G	H	ØJ
4055128	17.5	35	48	51	G 1/8	10	11	24	6.1
4055228	17.5	35	48	51	G 1/4	10	11	24	6.1
4055628	18.0	44	72	72	G 3/8	15	15	35	4.3
4055328	18.0	44	72	72	G 1/2	15	15	35	4.3