

Solenoids 08XX





Catalog Register
A17, P17

Publication 7500784.06.04.96



Standard voltages: 24 V DC, 230 V 50 Hz, other voltages on r
Design to VDE Reg. VDE 0580. 100% duty cycle.
Max. wire cross section of connection cable:
Solenoid 080X: 1.5 mm²,
Solenoid 084X: 2.5 mm²

	Rated power			Degree of protection to DIN 40050 ¹⁾	Perm. relative air humidity [%]	Temperatures ²⁾			Weight [kg]	Voltage	Circuit diagram	Cat. No. Solenoids	Constructional features
	DC	AC Inrush	AC Holding			Fluid max. [°C]	Ambience [°C]	Max. temp. sum [°C]					
	16W	50VA	27VA	IP00	<80	+80	-25 to +60	120	0.3	O	01	0800	Epoxy encapsulated solenoid
	16W	50VA	27VA	IP65	<80	+80	-25 to +60	120	0.33	O	01	0801	Epoxy encapsulated solenoid, connector (black) to solenoid, DIN 43650 A
		18VA	18VA	IP65	<80	+80	-25 to +60	120	0.34	AC	06	0807	Epoxy encapsulated solenoid, connector (black) DIN 43650 A, with rectifier
	15W	50VA	22VA	IP65	<80	+120	-5 to +60	140	0.5	O	01	0840	Steel housing, cable gland Pg 11, for M15x1 mounting thread
		17VA	17VA	IP65	<80	+100	-5 to +60	140	0.5	AC	06	0841	Steel housing, cable gland Pg 11, for M15x1 mounting thread, with rectifier, varistor
	15W	50VA	22VA	IP66	<95	+130	-5 to +70	150	0.5	O	01	0842	Steel housing, cable gland Pg 11, coil- and terminal space epoxy sealed, for M15x1 mounting thread, cable +140 °C 3x1.5mm ² , 3m long or as specified

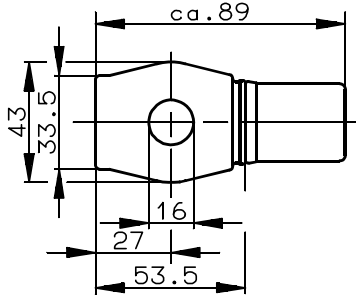
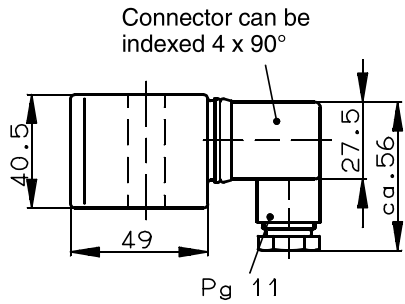
O – DC or AC,
depending on winding

¹⁾ Degree of protection applies to complete assembly composed of valve and coil, with electrical wiring according to regulations.

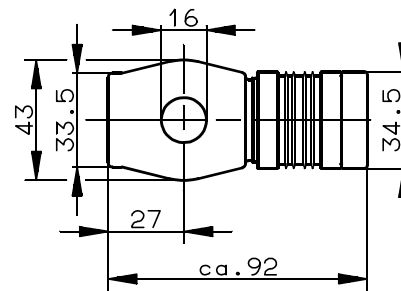
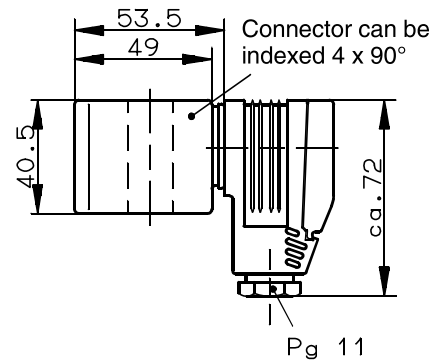
²⁾ Temperatures mentioned refer to solenoids only. Permissible valve temperatures are not considered here. The max. temperature sum composed of the ambient- and fluid temperature must not be exceeded.

Dimensional drawings

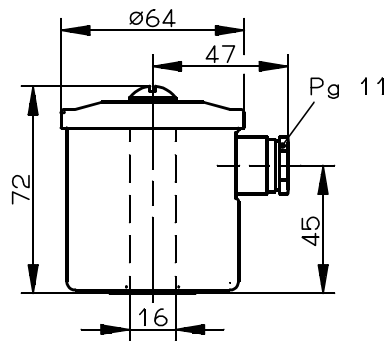
Cat. No. Solenoid
0801



Cat. No. Solenoid
0807

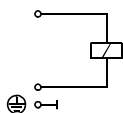


Cat. No. Solenoid
0840, 0841, 0842

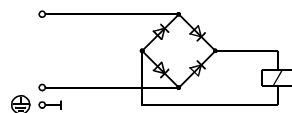


Circuit diagrams

01



06



Connection possibilities for epoxy encapsulated solenoids

Picture	Description	Cat. No. (cpl. part)	Remarks
	Connector to DIN 43650 A (black) (grey)	0570275 0657859	12...250 VDC/VAC
	Connector to DIN 43650 A with knurled-head screw (black) (grey)	0659295 0660135	12...250 VDC/VAC
	Connector to DIN 43650 A with rectifier (small design) (black) (grey)	0663303 0664633	12...250 VDC/VAC 
	Connector to DIN 43650 A with LED (black) (grey)	0664031 0664030	15...30 VDC 
	Connector to DIN 43650 A with lamp (black) (grey)	0663034 0663860	150...250 VDC/VAC 
	Connector with rectifier, symbol to DIN 43650 A (black) (grey)	0570819 0570322	15...250 VDC/10...250 VAC 
	Connector to DIN 43650 A with cable 3x1 mm ² , 3 m long	0681493	250 VDC/VAC
	Connector to DIN 43650 A with cable 3x1 mm ² , 3 m long, with LED and Zener diode	0664363	24 VDC/VAC 
	Adapter with varistor and indicating light for connectors to DIN 43650 A, degree of protection IP 54	0662804	24 VDC/VAC 
	Adapter with RC-link and indicating light for connectors to DIN 43650 A, degree of protection IP 54	0662805	220 VDC/VAC 
	Length 39 mm, height 20 mm above solenoid		
	Length 39 mm, height 20 mm above solenoid		