

2/2 directional valves DN 3



For halogen refrigerants
 Direct solenoid actuated poppet valves
 Connection by screwed flange or blowpipe
 Operating pressure from 0 up to 20 bar

Sales range Automatics
 A 201 ED-SFO
 Series 02000

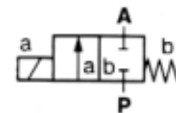
Publication 7501200.06.09.82



Description (standard unit)

Solenoid valve for gaseous or liquid refrigerants R 11, R 12, R 22, R 40, R 114, R 502 or other halogen refrigerants

Flow direction: Determined
 Fluid temperature: -10 to +80 °C
 Ambient temperature: -10 to +55 °C
 Mounting position: Optional, preferably vertical
 Material Body: Brass
 Seat seal: PTFE (Teflon)
 Inner parts: St. st. 1.4104, brass



Switching function:
 Normally closed

Features

- For refrigerants and other gaseous and liquid media
- Suited for operating pressure up to 20 bar max.
- High flow rate

Kenngrößen

DN	Type of connection	Connection size	For pipe diameter		Operating pressure [bar]		k _v -value (C _v (US) = k _v x 1.2)	Switching cycles for gaseous and liquid media up to 40 mm ³ /s [1/min]	Weight [kg]	Dimensional drawing No.	Cat. No.	
			[mm]	[Zoll]	min.	max.					Valve	Solenoid DC or AC
3	B	7/16 UNF	6	1/4	0	20	0,17	10	0,60	01	0203000.0701	
3	L	—	6		0	20	0,17	10	0,60	02	0203003.0701 ¹⁾	
3	L	—		1/4	0	20	0,17	10	0,60	02	0203004.0701 ¹⁾	
3	L	—		1/4	0	20	0,17	10	0,55	03	0203020.0701 ²⁾	

B = Union nut
 L = Blow pipe

State voltage [V]
 and frequency [Hz]

¹⁾ When soldering connecting pipes, removal of valve is not necessary.
²⁾ Prior to soldering of connecting pipes, valve has to be removed.



Solenoids

Standard voltages	DC	AC		Other voltages on request
		50 Hz	60 Hz	
	200 V	220 V	220 V	
	110 V	110 V	115 V	
	48 V	42 V	-	
	24 V	24 V	-	

Designs to VDE 0580
Duty cycle 100 %

Current draw

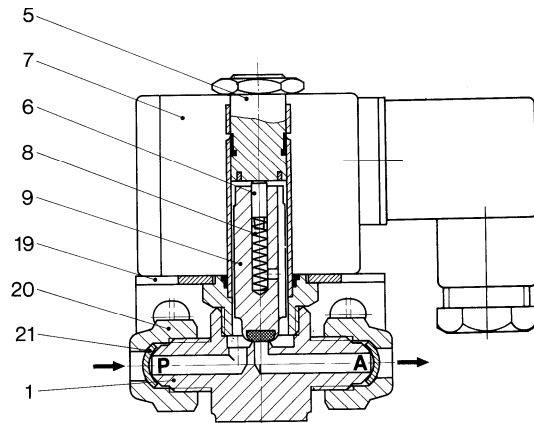
Solenoid DC		Solenoid AC		
		Inrush		Holding
0701	16 W	0701	50 VA	24 VA

Protection class to DIN 40050 IP 65
Connector class to DIN 43650

Further versions available on request:

- For lower temperatures
- For higher temperatures
- With climatic protection
- Explosion-proof design, protection classes (Ex)s G4 or (Ex)s G5

Sectional drawing



- 1 Body
- 2 Core tube
- *6 Bolt
- 7 Solenoid
- *8 Spring
- *9 Plunger
- 19 Angle
- 20 Union
- 21 Washer

Wearing parts marked * are enclosed in spare parts kit. When ordering, please state valve catalog number.

Dimensional drawings

