

Excelon® Modular System F72C, F73C, F74C, F74H Oil Removal (Coalescing) Filters

- Excelon® design allows in-line or modular installation
- High efficiency oil and particle removal
- Quick release bayonet bowl
- Standard visual service life indicator turns from green to red when the filter element needs to be replaced



Technical data

Fluid:

Compressed air, neutral gases
NOTE: Contact technical support for use with other media.

Maximum pressure:

Transparent bowl:
150 psig (10 bar)
Metal bowl: 250 psig (17 bar)
F72C with metal bowl and autodrain: 150 psig (10 bar)

NOTE: Coalescing filters should be used in conjunction with a 5µm general purpose filter upstream to maximize filter element life and optimize performance.

Operating temperature*:

Transparent bowl:
-30° to 125°F (-34° to 50°C)
Metal bowl:
-30° to 150°F (-34° to 65°C)
* Air supply must be dry enough to avoid ice formation at temperatures below 35°F (2°C).

Filtration:

Particle removal: 0.01 µm
Remaining oil content:
0.01 ppm mg/m³ at 70°F (21°C)

Materials

F72C:
Body: zinc
Bowl transparent: polycarbonate
Metal: zinc
Metal bowl liquid level indicator lens: Transparent nylon
Element: synthetic fiber and polyurethane foam
Elastomers: chloroprene and nitrile
Service life indicator materials- Body: transparent nylon.
Internal parts: acetal.
Spring: stainless steel.
Elastomers: nitrile, chloroprene

Materials

F73C and F74C:
Body: aluminum
Transparent bowl: polycarbonate
Transparent with guard: polycarbonate,
Guard: aluminum
Metal bowl: aluminum
Metal bowl liquid level indicator lens: Transparent nylon
Element: synthetic fiber and polyurethane foam
Elastomers: chloroprene and nitrile
Mechanical service indicator materials Body: transparent nylon
Internal parts: Acetal
Spring: Stainless steel
Elastomers: nitrile

Ordering information

Models listed include PTF threads, service indicator, automatic drain, and a metal bowl with liquid level indicator.

ISO Symbols	Port Size	Model	Maximum Flow* scfm (dm³/s)	Weight lb (kg)
 Automatic Manual Drain	1/4"	F72C-2AD-AE0	9.5 (4.5)	1.2 (0.54)
	3/8"	F73C-3AD-AD0	21.2 (10.0)	1.2 (0.54)
	1/2"	F74C-4AD-AD0(std)	33.9 (16.0)	1.84 (0.83)
	1/2"	F74H-4AD-AD0 (hi-flow)	59.3 (28.0)	2.45 (1.11)
	3/4"	F74H-6AD-AD0 (hi-flow)	59.3 (28.0)	2.40 (1.10)

* Maximum flow with 90 psig (6.3 bar) inlet pressure to maintain stated oil removal performance.

Option selector

F 7 ★ ★ - ★ ★ ★ - ★ ★ 0

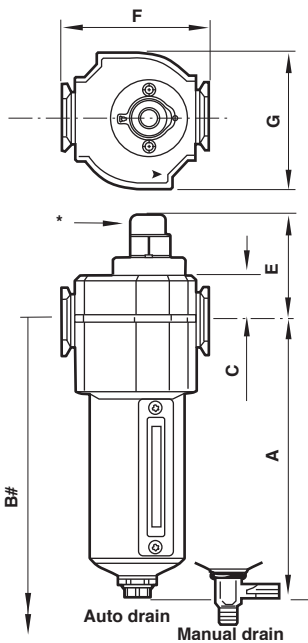
Series	Substitute	Bowl	Substitute
72	2C	Metal w/ liquid level indicator (72*, 73, 74)	D
73	3C	Long metal w/ liquid level indicator (72*)	E
74	4C	Long transparent (72*)	L
74 (High flow)	4H	Transparent with guard (73, 74)	P
Port size	Substitute	Transparent bowl (72*, 73)	T
1/4 (72, 73)	2	Drain	Substitute
3/8 (72, 73, 74)	3	1/4 turn manual	Q
1/2 (73, 74)	4	Auto drain*	A
3/4 (74)	6	Service life indicator	Substitute
Threads	Substitute	With (visual)	D
PTF	A	Without	N
ISO G parallel	G		

* 72 Series auto drain is available only with long bowl option.

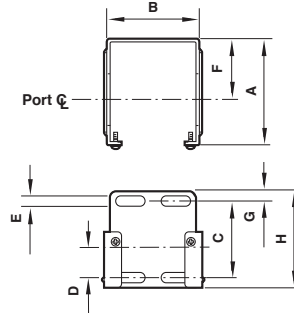
Accessories

	Wall mounting bracket*	Quikmount pipe adapters (quantity of 1) (NPT)	Quikclamp®* (quantity of 1)	Quikclamp® and wall bracket* (quantity of 1)	Visual service indicator	Service kit Seal and gasket	Replacement elements
F72C	4224-50	4215-02 (1/4) 4215-03 (3/8)	4214-51	4214-52		4380-500	5925-09
F73C	4424-50	4315-01 (1/4) 4315-02 (3/8) 4315-03 (1/2) 4315-04 (3/4)	4314-51	4314-52	5797-50	4380-602	4444-01
F74C, F74H	4324-50	4315-02 (3/8) 4315-03 (1/2) 4315-04 (3/4)	4314-51	4314-52	5797-50	4380-730	4344-01 (F74C) 4344-02 (F74H)

*Bracket kit does not include wall mounting screws.



Mounting bracket

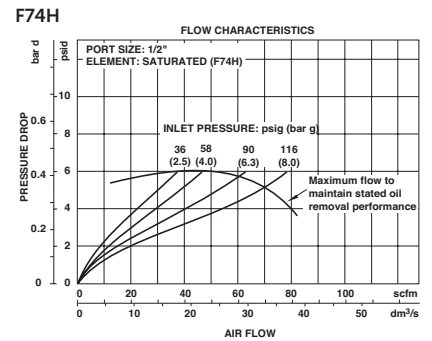
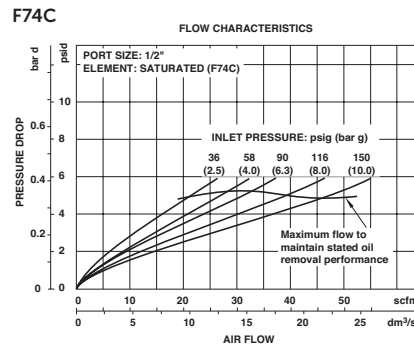
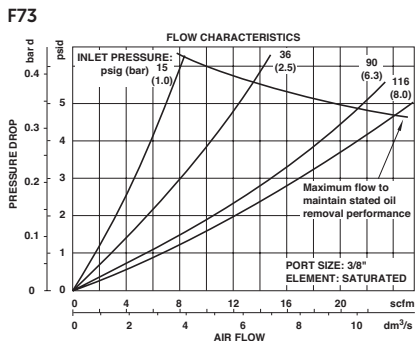
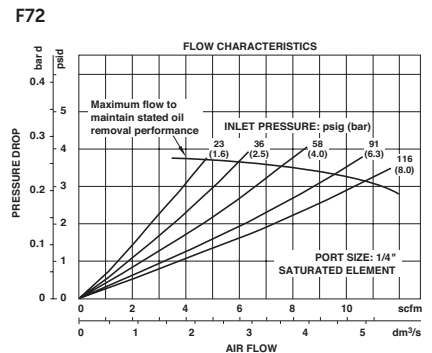


Series	A	B	C	D	E	F	G	H
72	2.36	1.65	1.54	0.73	0.16	1.50	0.24	2.01
73	2.64	2.36	1.89	0.75	0.28	1.50	0.24	2.40
74	3.11	2.72	1.97	0.79	0.20	2.01	0.24	2.40

Series	Drain type	A	B	C	E	F	G
F72C	Auto	5.51	7.52	0.75	2.09	1.97	1.89
	Manual	5.83	7.83	0.75	2.09	1.97	1.89
F73C	Auto	5.80	8.15	0.98	2.36	2.68	2.44
	Manual	6.15	8.50	0.98	2.36	2.68	2.44
F74C	Auto	6.35	9.17	0.98	2.36	3.15	2.91
	Manual	6.95	9.80	0.98	2.36	3.15	2.91
F74H	Auto	8.44	11.18	0.98	2.36	3.15	2.91
	Manual	9.04	11.81	0.98	2.36	3.15	2.91

* Standard service indicator

Minimum clearance required to remove bowl



Dimensions in inches (mm)