

VS Series Valve Islands

Multipole, Fieldbus, Industrial Ethernet and Individually wired

Modular

Maintenance friendly

Reliable

*Engineering
GREAT Solutions*



Contents

03	Introduction
04	No compromise design with unlimited capability
06	VS Series
07	Plug-in technology
07	VS Series gives you options
08	VS Series Quick Guide
10	Accessories
10	Valve Island Configurator
11	Introducing VS Series Valve Islands now available with Industrial Ethernet
11	Introducing PROFINET IRT



Innovation,
products
and service

Engineering GREAT solutions through people, products, innovation and service

IMI Precision Engineering is a world-leader in fluid and motion control. Building close, collaborative relationships with our customers, we gain a deep understanding of their engineering needs and then mobilise our resources and expertise to deliver distinctive products and solutions.

Wherever precision, speed and engineering reliability are essential, our global footprint, problem-solving capability and portfolio of high performance products enables us to deliver GREAT solutions which help customers tackle the world's most demanding engineering challenges.

> **Reliability**

We deliver and support our high quality products through our global service network.

> **High performance products**

Calling on a world-class portfolio of fluid and motion control products including IMI Norgren, IMI Buschjost, IMI FAS, IMI Herion and IMI Maxseal. We can supply these singly, or combined in powerful customised solutions to improve performance and productivity.

> **Partnership & Problem Solving**

We get closer to our customers to understand their exact challenges.



No compromise design with unlimited capability

Field expandability has reached new levels with the IMI Norgren VS18, VS26, and VS45 system valve range. Whether using a simple Multipole, complex Fieldbus system or Industrial Ethernet, expanding the size of your valve island to match the changing demands of your equipment is a simple “plug-and-play” experience. Our plug-in Printed Circuit Board (PCB) technology takes only seconds to install and additional sub-bases can be attached with only two screws.

The VS18, VS26, and VS45 valve islands are unique in offering two spool technologies. To maximize the speed of your pneumatic system, use the IMI Norgren softseal spool to achieve enhanced flow rates. For extended life, our glandless spool and sleeve delivers hundreds of millions of trouble-free cycles. Or incorporate both spool technologies within the same valve island to optimize your machine's performance.

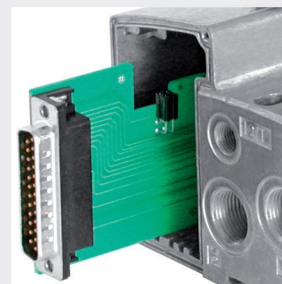
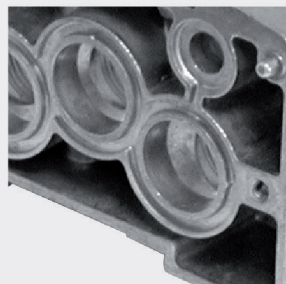
The IMI Norgren VS Series gives you the versatility to choose the features you need with the modularity to easily expand and add accessories. By combining flexibility and Swiss-engineered quality, we have created a no-compromise valve range with unlimited ability.

Innovation

- > 2 patents
- > Universal PNP/NPN 24V d.c. Multipole connection
- > VS45 - Full Wave rectification and regulation for 115V a.c. connections, allowing the use of standard 24V d.c. valves
- > One Piece Solid PCB valve connection system, eliminating potential bad connections
- > Extensive multi-pressure options, allows pressure/ vacuum zoning within the same valve island

Modular

- > Fieldbus and Multipole extendable in single stations
- > Industrial Ethernet extendable in double stations
- > Up to 40 solenoid valves depending on Fieldbus, Industrial Ethernet or Multipole option
- > Extensive sandwich accessory options
- > Three sizes of plug-in sub-base valves
- > Flow from 550 to 4200 l/min.



Versatile

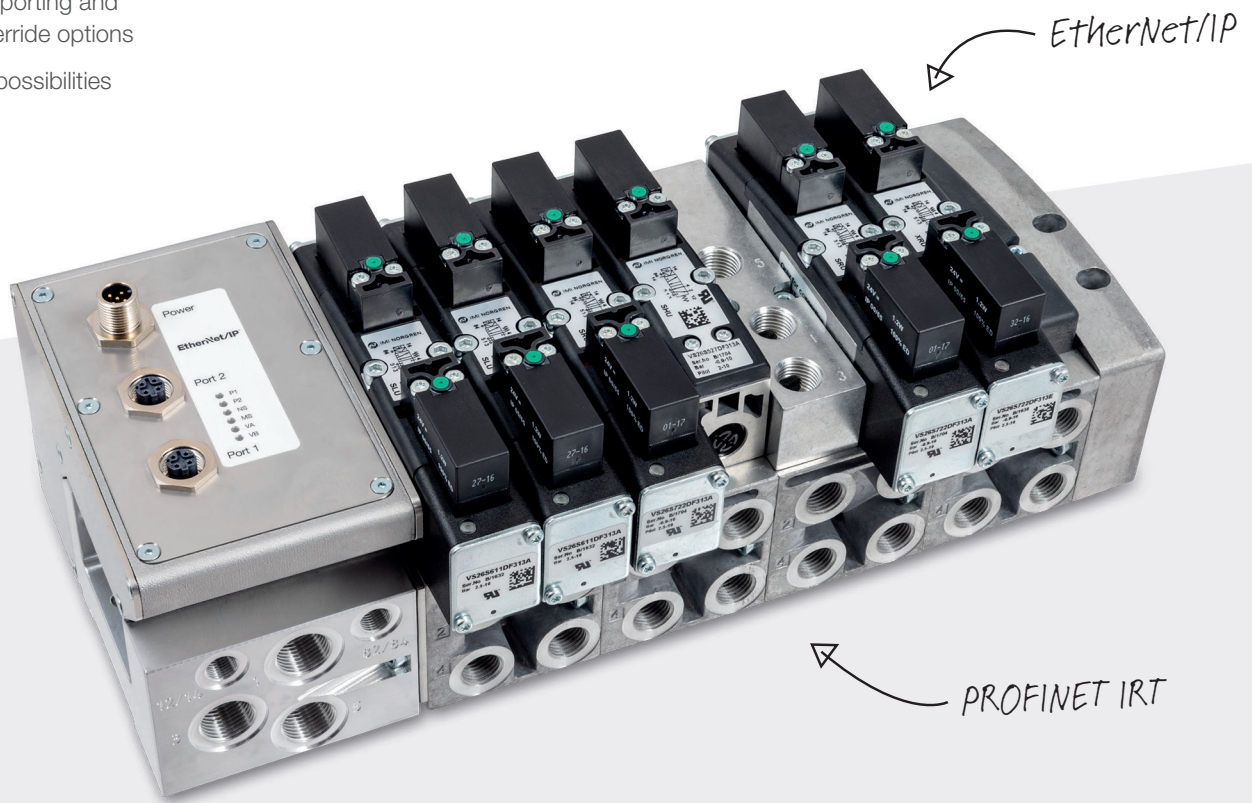
- > Two spool technologies with unique advantages
- > Universal PNP/NPN 24V d.c. multipole
- > Eleven valve configurations
- > Two Multipole voltages
- > Five integrated Fieldbus protocols
- > Two Industrial Ethernet protocols
- > Numerous porting and manual override options
- > Millions of possibilities

Reliable

- > 200 million cycles valve life (glandless spool and sleeve)
- > Robust construction
- > IP 65 and NEMA 4
- > Durable electrical technology
- > ATEX approved

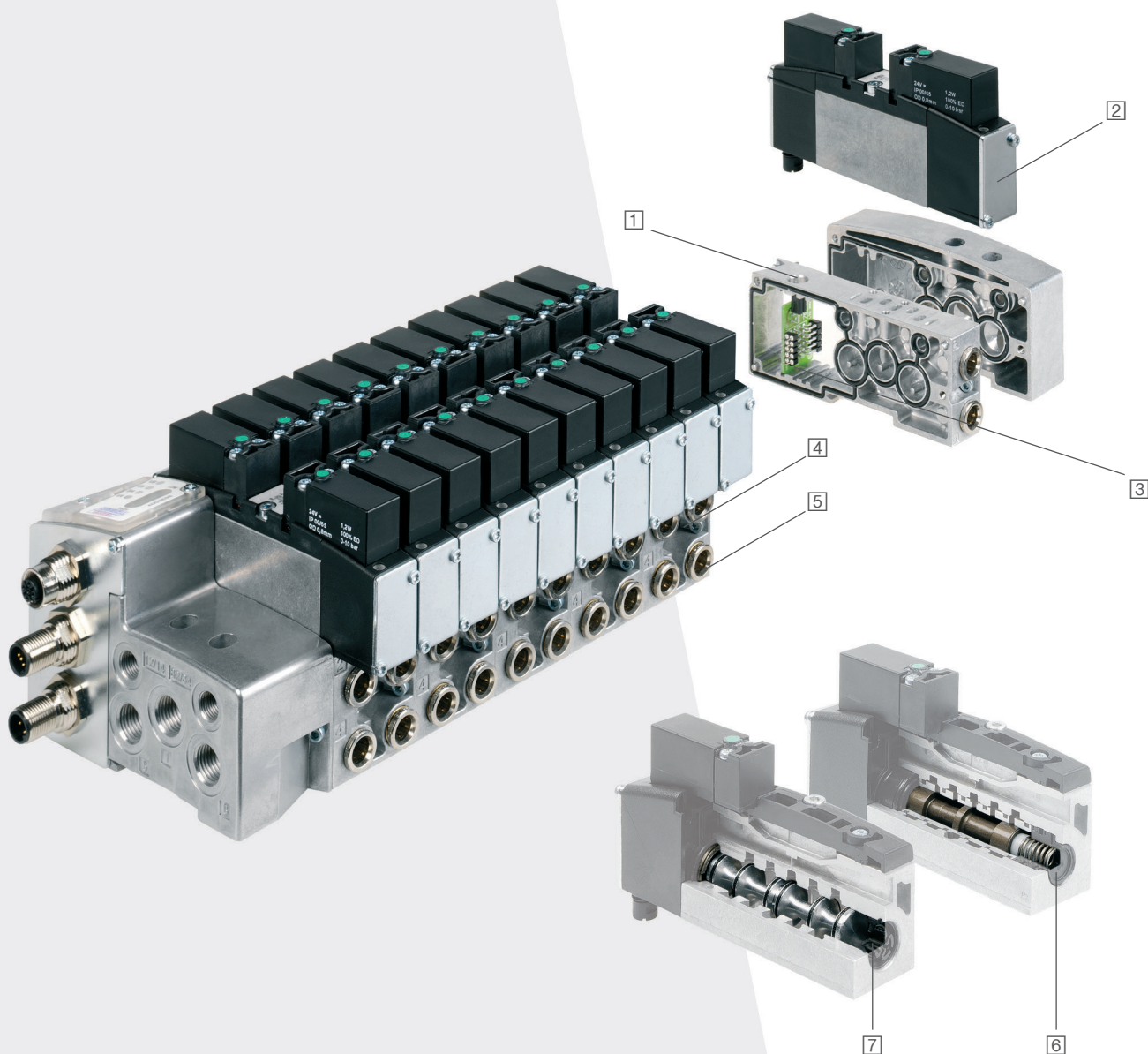
Maintenance friendly

- > Simple plug-in sub-base valve exchange
- > Interruption-free valve replacement option
- > Easy exchange of system components



VS Series

- 1 **Add up to 4 stations easily**
No need to disassemble the valve island (no tie rods)
- 2 **Simple installation**
Plug-in sub-base valve
- 3 **Correct connection guaranteed**
Simple plug-in electronics
- 4 **Only seconds to install**
Only 2 screws for additional sub-base attachment
- 5 **Integrated fittings (VS18/VS26)**
Reduce installation time, minimize leak paths
- 6 **Total reliability**
Glandless spool and sleeve deliver millions of trouble-free cycles
- 7 **Maximum speed**
Soft seal spool for enhanced flow rates



Plug-in technology

Pneumatics

- > Three sizes, 18 mm, 26 mm and 45 mm width
- > Up to 20 stations (40 solenoids) depending on protocol
- > VS18 and VS26 comply with ISO 15407-2 standard
- > Simple multi-pressure functionality
- > 2 x 3/2 valves in one body
- > 2 x 2/2 valves in one body (VS18/VS26)

Multipole

- > 24V d.c. and 115V a.c. voltage options
- > Wide range of electrical connections
- > Field expandable up to four additional stations
- > One universal 24V d.c. PCB for both PNP/NPN

Fieldbus

- > Compact size through integrated electronics
- > Field expandable up to four additional stations
- > Wide range of protocols offered

Industrial Ethernet

- > Ultimate flexibility in machine design
- > Standardised platform for networking of devices
- > Real-time data transmitted simultaneously over a common medium
- > Large network coverage and almost unlimited number of users
- > Large amounts of data transferable
- > Equal bus access authorisation
- > Quick and easy commissioning



DeviceNet™

EtherNet/IP™

CANopen®

VS Series gives you options

Glandless or softseal spool valves – the right technology, for every application

For a higher flow rate use the IMI Norgren softseal spool.
For maximum reliability choose our glandless spool technology.
Or simply use both to optimize your machine performance.

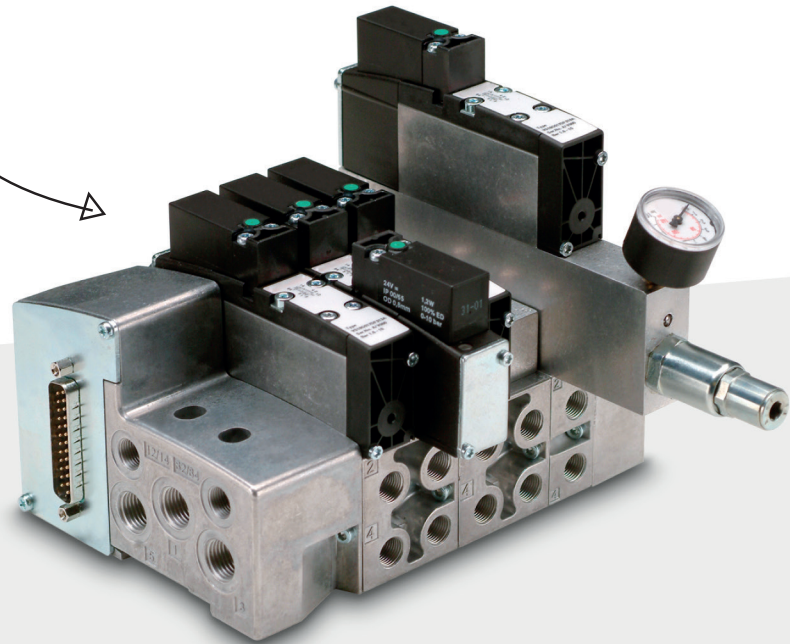
Size	Spool type	Flow l/min	Max. op. Pressure	Spool technology rating
VS18	Glandless	550	16 bar	200 million cycles
VS18	Softseal	650	10 bar	50 million cycles
VS26	Glandless	1000	16 bar	200 million cycles
VS26	Softseal	1350	10 bar	50 million cycles
VS45	Glandless	3200	16 bar	200 million cycles
VS45	Softseal	4200	10 bar	20 million cycles

VS Series Quick Guide

VS18

Product specification	Flow	550 to 650 l/min
	Ports 2&4	G1/8, 6 mm or 8 mm PIF NPTF 1/8 Plug-in 1/4, 6 mm and 8 mm
	Fieldbus	4 to 16 stations
	Industrial Ethernet	4 to 20 stations
	Multipole	2 to 20 stations
	Voltage	24 Vdc or 115 Vac
	Expandable	1 to 4 stations

VS18



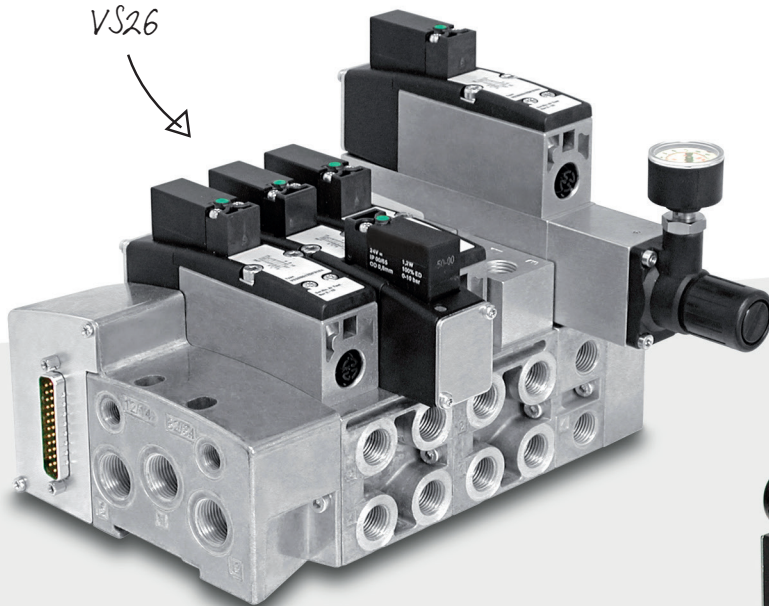
VS26

Product specification	Flow	1000 to 1350 l/min
	Ports 2&4	G1/4, 8 mm or 10 mm PIF 3/8 PIF, NPTF 1/8
	Fieldbus	4 to 16 stations
	Industrial Ethernet	4 to 20 stations
	Multipole	2 to 20 stations
	Voltage	24 Vdc or 115 Vac
	Expandable	1 to 4 stations

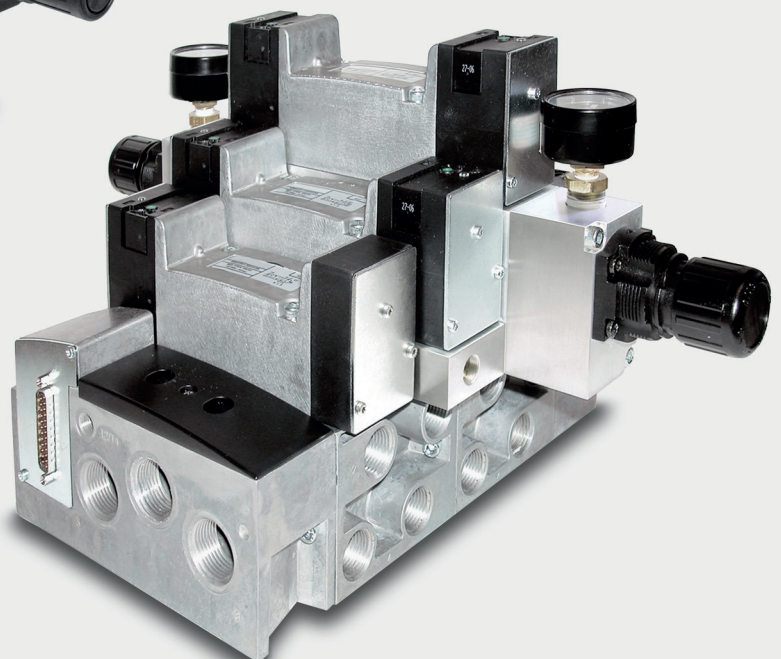
VS45

Product specification	Flow	550 to 650 l/min
	Ports 1, 3, 5	G3/4
	Ports 2&4	G3/8, or G1/2
	Fieldbus	4 to 16 stations
	Industrial Ethernet	4 to 20 stations
	Multipole	2 to 20 stations
	Voltage	24 Vdc or 115 Vac
	Expandable	1 to 4 stations

VS26



VS45

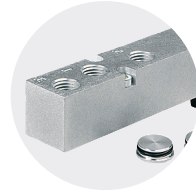


Accessories



Pressure control

Four choices of pressure regulator sandwich plates provide individual pressure and force control as well as optimized air consumption.



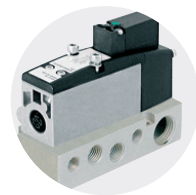
Multi-pressure control

Intermediate supply & exhaust manifold and blanking discs enable simple and sophisticated multi-pressure designs.



Flow control

Flow control sandwich plate provides actuator speed control.



Single station sub-base

For applications requiring single valves located remotely from the valve island.



Inlet air control (VS18/VS26)

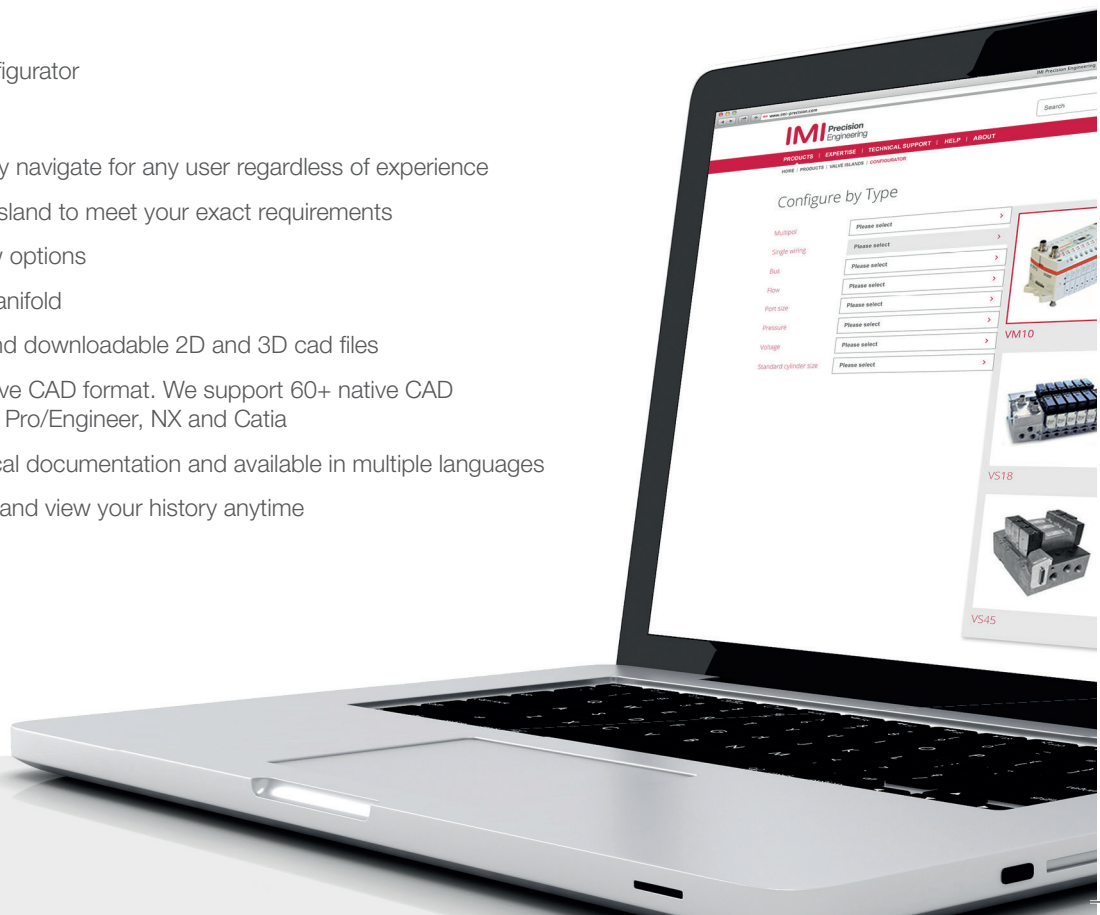
Single valve shut-off plate allows exchange of valve while valve island is pressurised.

Valve Island Configurator

Online answers 24/7

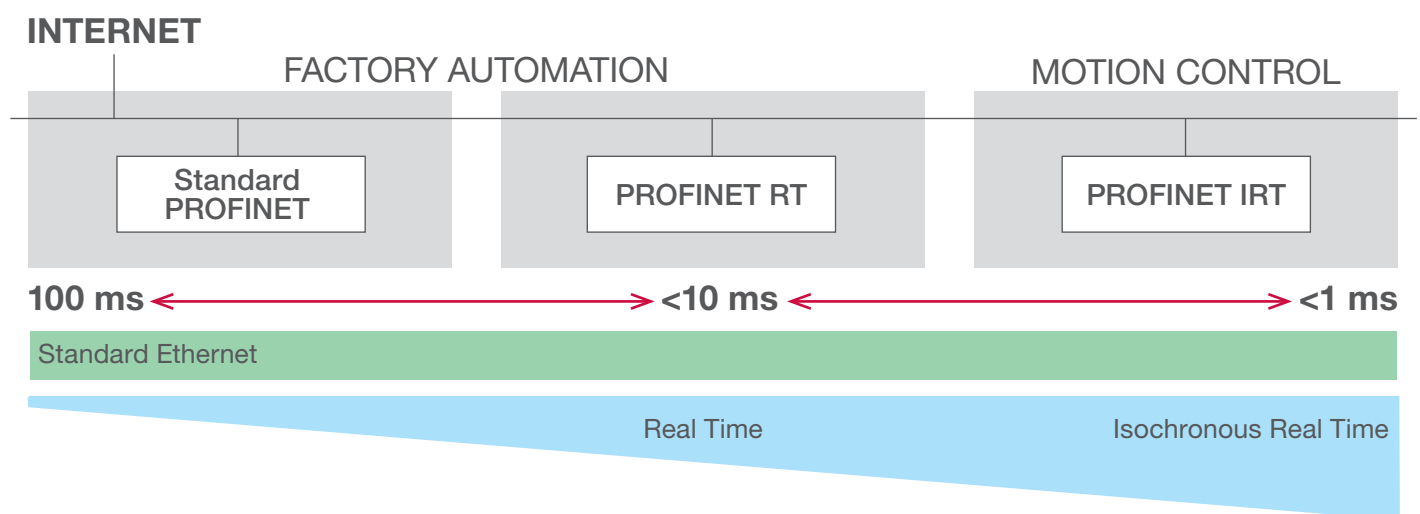
Introducing the brand new valve island configurator

- > Intuitive, flexible and easy to use...
- > Flexible Step by step process that is easy navigate for any user regardless of experience
- > Enables quick specification of the valve island to meet your exact requirements
- > Provides price, availability and order now options
- > Unique part number assigned to your manifold
- > Live visualisation of your configuration and downloadable 2D and 3D cad files
- > Download your configuration in your native CAD format. We support 60+ native CAD formats including AutoCAD, SolidWorks, Pro/Engineer, NX and Catia
- > Easy to access and download all technical documentation and available in multiple languages
- > Save your configurations for a later date and view your history anytime
- > Online and telephone support available



Introducing VS Series Valve Islands with Industrial Ethernet

- > Ultimate flexibility in machine design
- > Standardised platform for networking of devices
- > Real-time data transmitted simultaneously over a common medium
- > Large network coverage and unlimited number of users
- > Large amounts of data transferable
- > Equal bus access authorisation

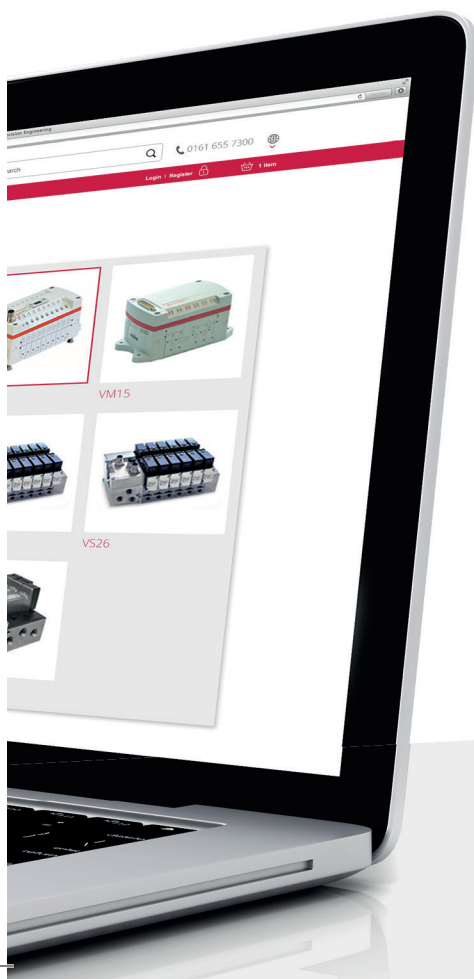


Benefits of PROFINET IRT

- > Profinet IRT offered as standard
- > Isochronous Real Time - The highest level of PROFINET available
- > The latest and most advanced Industrial Ethernet Protocol
- > For use in fast motion control applications that need precise and deterministic data exchange
- > Ideal for applications where motion control is critical to production cycles in the most demanding control environments
- > Over 100 times faster than standard Ethernet - Ultra short cycle times, independent of the network load

Benefits of EtherNet/IP

- > More flexible network connectivity with a robust industrial standard
- > Various topology options available
- > Users are provided with standard Ethernet topology for industrial automation applications
- > Based on standard Internet and Ethernet



IMI Precision Engineering operates four global centres of technical excellence and a sales and service network in 75 countries, as well as manufacturing capability in the USA, Germany, China, UK, Switzerland, Czech Republic, Mexico and Brazil.

For information on all IMI Precision Engineering companies visit www.imi-precision.com

Supported by distributors worldwide.

IMI

Precision Engineering

Norgren, Buschjost, FAS, Herion and Maxseal are registered trademarks of IMI Precision Engineering companies.

Due to our policy of continuous development, IMI Precision Engineering reserve the right to change specifications without prior notice.

z8417BR en/04/17

Selected Images used under license from Shutterstock.com

*Engineering
GREAT
Solutions*



For further information, scan this QR code or visit www.imi-precision.com

