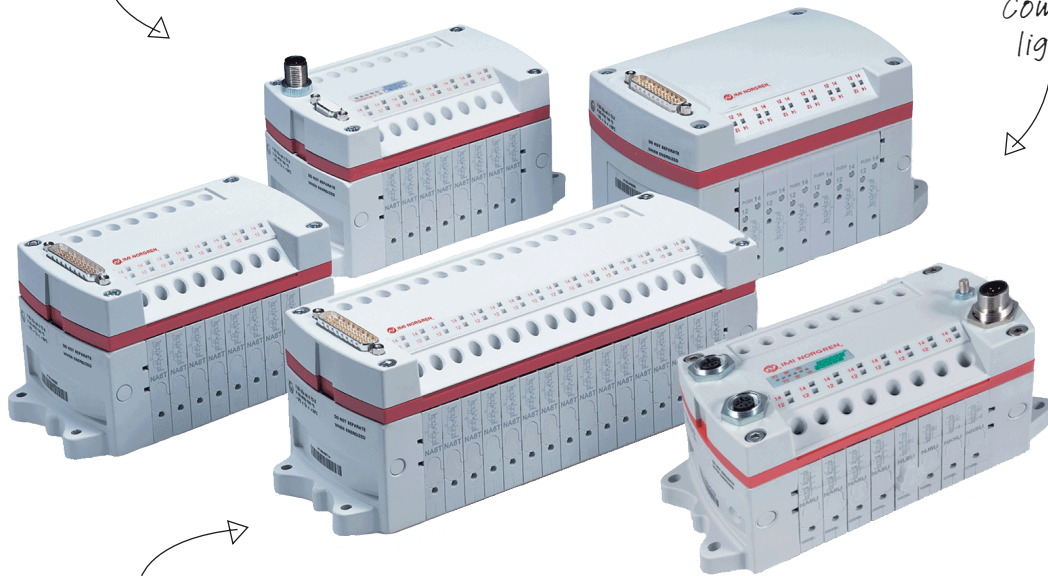


VM Series Valve Manifolds

Multipole, Industrial Ethernet, and Individually Wired

*Highly flexible
and versatile*

*Compact and
lightweight*



*Easy to configure
and use*

*Millions of
options available*

CONTENTS

Introduction	02
VM Series Valve Manifolds - The Family	03
Introducing VM10 Series Valve Manifolds	04
VM Series Advantage	05
Options & Accessories	06
Valve Manifold Configurator	06
Introducing VM Series Valve Manifolds with PROFINET IRT	07

Breakthrough Engineering for a Better World

Norgren is part of global engineering organization IMI plc. IMI is at the forefront of delivering the solutions we need in a changing world and is focused on **creating tremendous value by solving key industry problems in attractive markets and employing the best.**

Norgren has a proud history of creating innovative engineering solutions in precise motion control and fluid technology, and we collaborate with our customers across more than 50 countries in critical areas such as Factory Automation, Material Handling, Rail, Energy, Process Control, Life Science and Commercial Vehicles.

From improving speed, productivity, reliability and efficiency of equipment, to generating significant energy and cost savings, or lowering total cost of ownership across many industries, Norgren's high-quality solutions are designed to help customers pursue progress, achieve new goals and overcome problems.

With market-leading industry expertise, we offer the capability, resources, engineering intelligence and global support infrastructure to tackle the largest project demands.

Our world-class portfolio of fluid and motion control products include Norgren, Buschjost, FAS, Herion, Kloehn, Maxseal and Thompson Valves. Supplied either individually or combined into powerful customized solutions to meet customer needs.

Breakthrough engineering you can count on.

VM Series Valve Manifolds

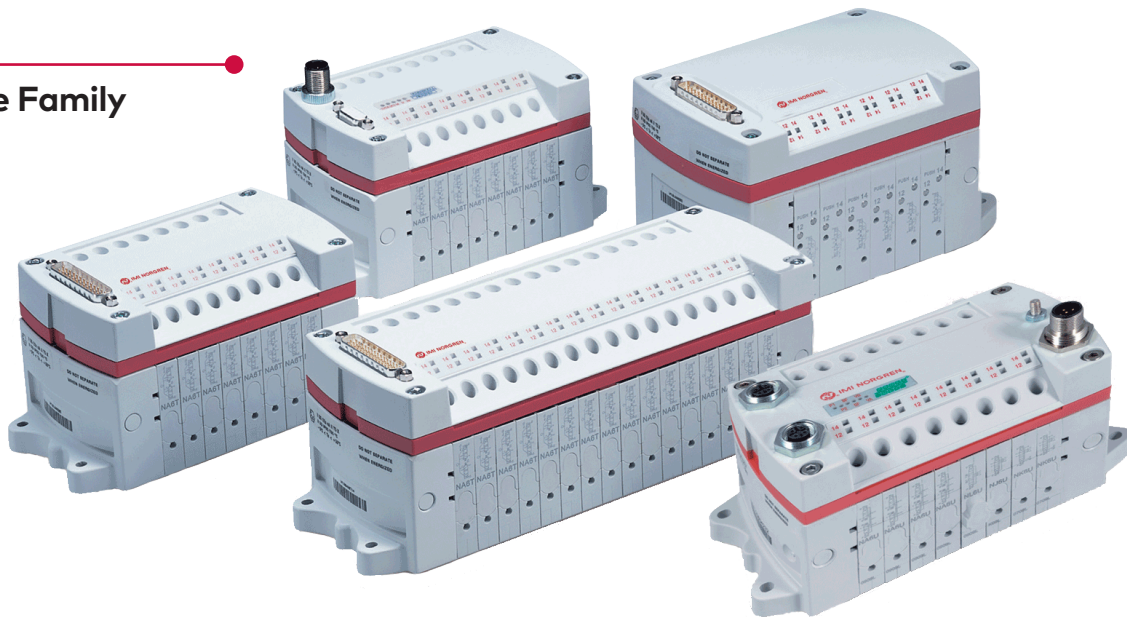
The Norgren VM Series Valve manifolds are available in both 10 mm and 15 mm valve body widths and provide unsurpassed flow rates of 430 l/min and 1,000 l/min respectively.

You have the option of Individually wired, Multipole, and Industrial Ethernet* connectivity with all of the market-leading protocols offered.

You can also choose from DIN rail, through hole, panel and sub base mounting options. Valve manifolds can be configured from 2 to 20 stations (Individually Wired option above 16 stations only) with single or double solenoids and with a high number of possibilities for manual overrides and tube fitting sizes. This results in over 15 million possible configurations.

Selection, however, is simple. We provide an online configuration tool which provides you with a part number and price, and you can download your configuration in your native CAD format. We support 60+ native CAD formats including AutoCAD, SolidWorks, Pro/Engineer, NX and Catia.

The Family



VM10

A 10 mm valve body width system valve with an unsurpassed flow rate of 430 l/min. Its design ensures it is highly suitable for many applications across a wide range of industry sectors. The high number of options available enables configuration of the valve manifolds to meet your exact requirements.

VM15

A 15 mm valve body width system valve, again providing unsurpassed flow for size, this time 1,000 l/min. It has some of the options offered with the VM10 plus some additional multi-pressure options often required with higher flow applications. Configuring valve manifolds to exactly match requirements is easy using our simple software configuration tool available online.

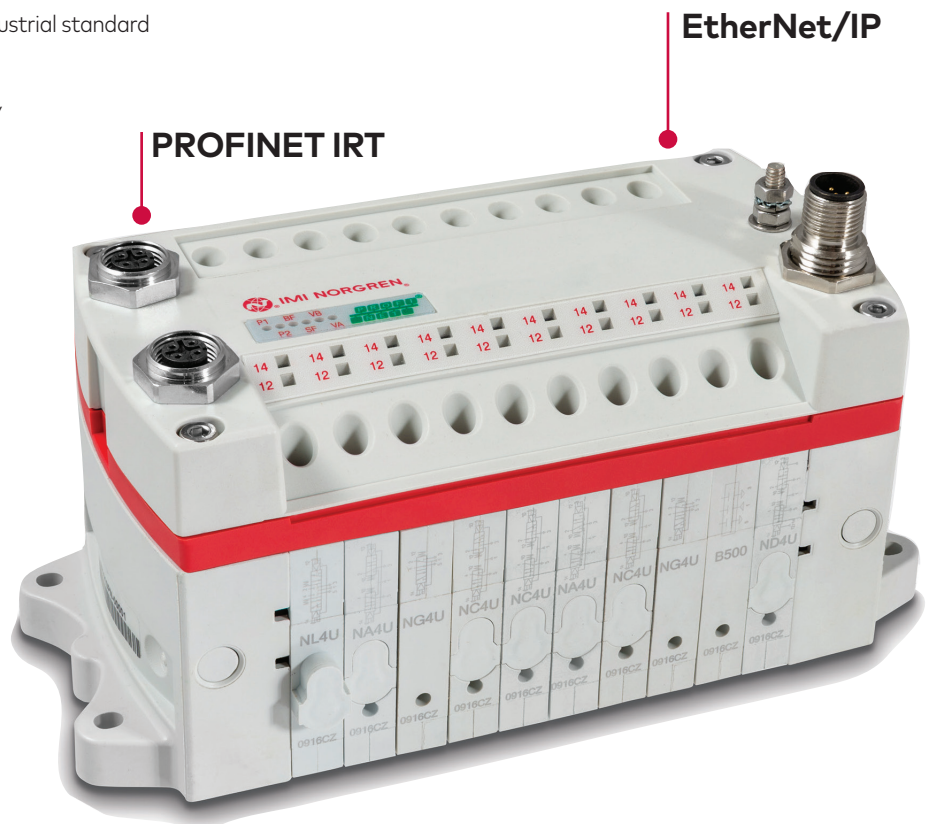
*Industrial Ethernet options only available on VM10

Introducing VM Series Valve Manifolds with Industrial EtherNet

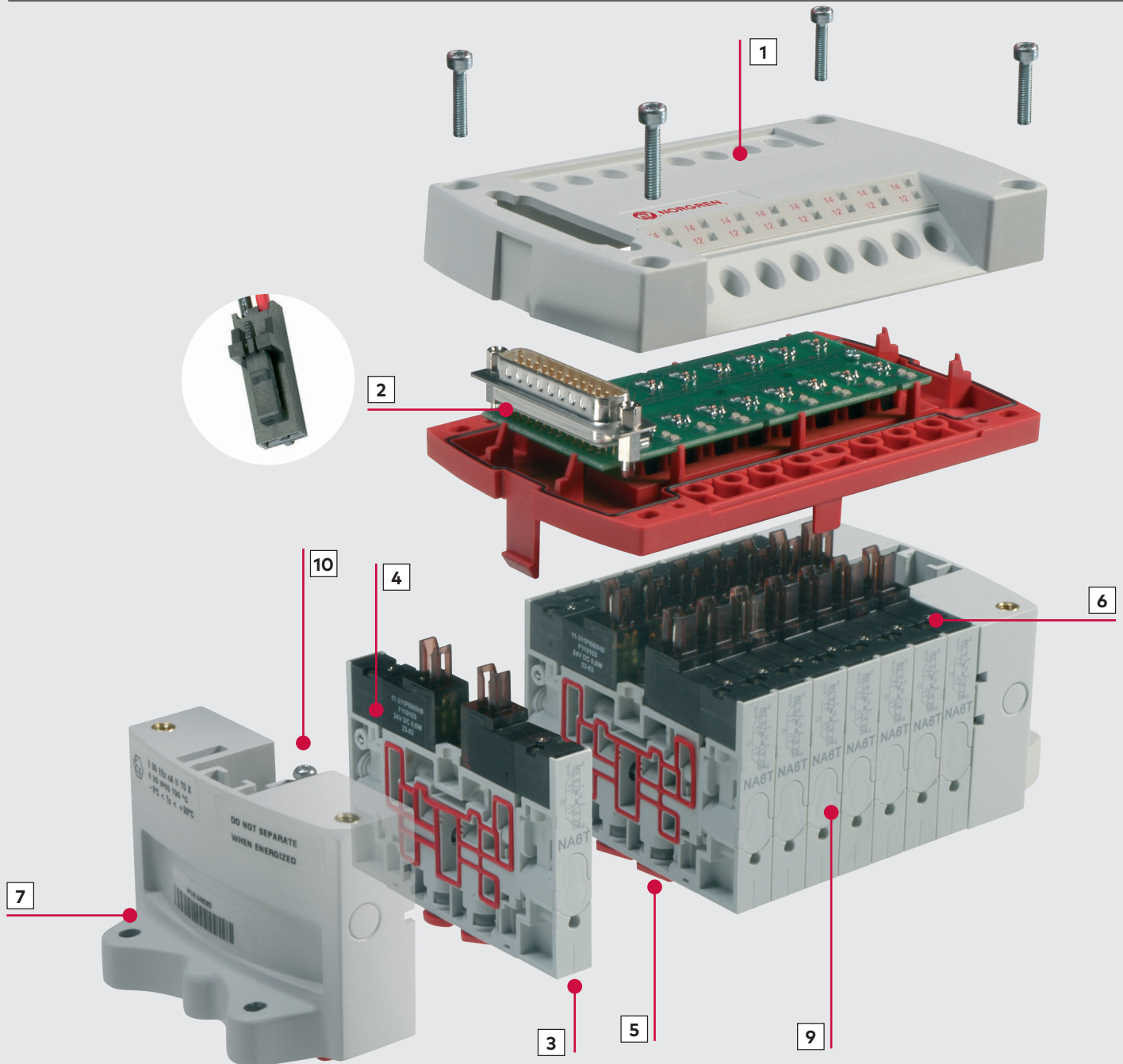
- » Ultimate flexibility in machine design
- » Standardized platform for networking of devices
- » Real-time data transmitted simultaneously over a common medium
- » Large network coverage and almost unlimited number of users
- » Large amounts of data transferable
- » Equal bus access authorization
- » Available with PROFINET IRT and EtherNet/IP
- » Available in 8, 10, 12 and 16 stations having up to 32 solenoides protected with an electrophoretic paint coating providing excellent corrosion and chip resistant protection

Benefits of EtherNet/IP

- » More flexible network connectivity with a robust industrial standard
- » Various topology options available
- » Users are provided with standard Ethernet topology for industrial automation applications
- » Based on standard Internet and Ethernet



VM Series Advantage



1 Engineered polymer provides increased strength and weight reduction

2 Individually wired and Multipole options provide connection flexibility

3 430 l/min from a 10 mm valve body width, 1,000 l/min from a 15 mm valve body width provides maximum flow to size ratio

4 32 solenoids possible with Multipole or Industrial EtherNet/IP enabling a reduction in the number of valve manifolds required

5 Integral push in fittings reduce component count, reduce valve manifold size and eliminate potential leak paths

6 Manual override options provide the ability to choose the variant best suited to the application

7 Through hole mounting enables valve manifolds to be directly mounted without the need for additional brackets

8 The VM range has CE and UL approvals (not including Industrial Ethernet) and is also LABS free ensuring the product complies with the required international standards

9 Laser etched part numbers ensure easy identification of components

10 Single screw and hinge locking mechanism for securing each valve to the next facilitates simple valve addition and exchange (no tie rods)

» Balanced spool design enables the valves to be used with both pressure and vacuum

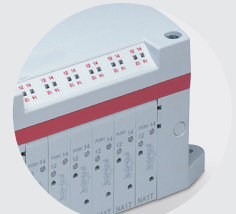
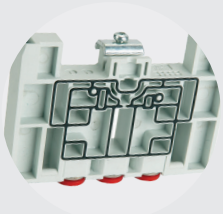
» Proven spool and seal pack design ensures a high life of 100,000,000 cycles

Options & Accessories

ISEMs (Intermediate Supply Exhaust Module) enable multiple pressures to be controlled in one valve manifold

Complete range of cables and connectors enable single sourcing of the complete system

Stick on label and hinged label housing provide flexibility in valve identification



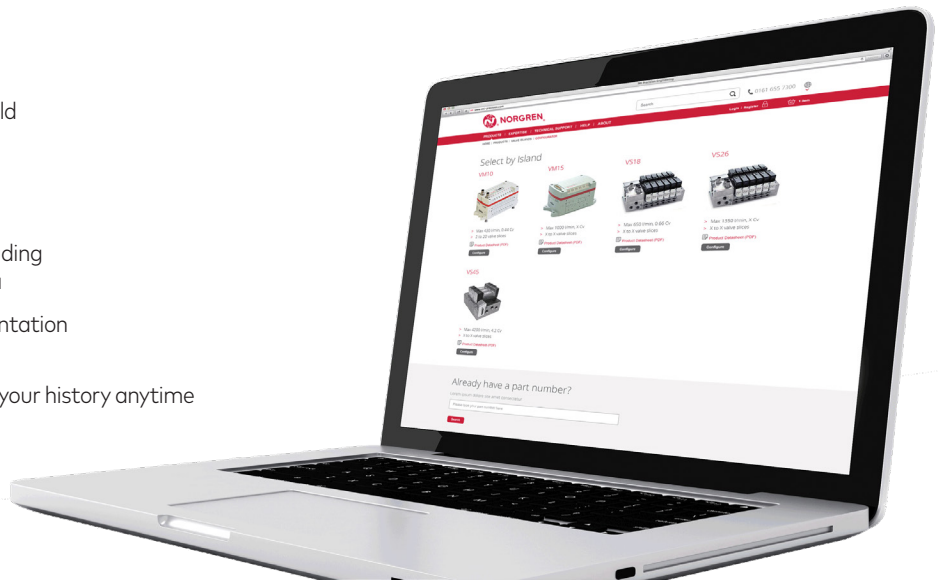
Clip in manual overrides for VM10 for operating solenoid overrides without the need for tools

Robust bracket for mounting directly or via DIN rail

Valve Manifold Configurator

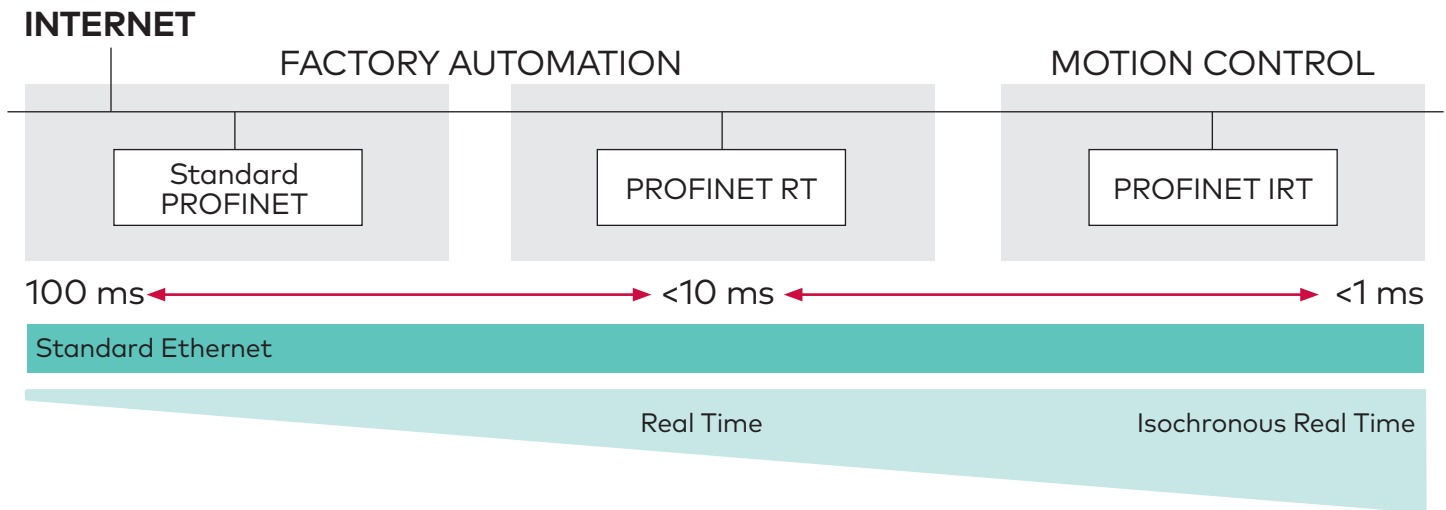
Introducing the valve manifold configurator intuitive, flexible and easy to use...

- » Flexible step by step process that is easy to navigate for any user regardless of experience
- » Enables quick specification of the valve manifold to meet your exact requirements
- » Provides price, availability and order now options
- » Unique part number assigned to your valve manifold
- » Live visualization of your configuration and downloadable 2D and 3D CAD files
- » Download your configuration in your native CAD format. We support 60+ native CAD formats including AutoCAD, SolidWorks, Pro/Engineer, NX and Catia
- » Easy to access and download all technical documentation and available in multiple languages
- » Save your configurations for a later date and view your history anytime
- » Online and telephone support available



Valve Manifolds with Industrial Ethernet

- » Ultimate flexibility in machine design
- » Standardized platform for networking of devices
- » Real-time data transmitted simultaneously over a common medium
- » Large network coverage and unlimited number of users
- » Large amounts of data transferable
- » Equal bus access authorization



Benefits of PROFINET IRT

- » PROFINET IRT offered as standard
- » Isochronous Real Time - The highest level of PROFINET available
- » The latest and most advanced Industrial Ethernet Protocol
- » For use in fast motion control applications that need precise and deterministic data exchange
- » Ideal for applications where motion control is critical to production cycles in the most demanding control environments
- » Over 100 times faster than standard Ethernet - Ultra short cycle times, independent of the network load

Benefits of EtherNet/IP

- » More flexible network connectivity with a robust industrial standard
- » Various topology options available
- » Users are provided with standard Ethernet topology for industrial automation applications
- » Based on standard Internet and Ethernet

Norgren operates four global centres of technical excellence and a sales and service network in 50 countries, as well as manufacturing capability in Brazil, China, Czech Republic, Germany, India, Mexico UK and the USA.

For information on all Norgren companies visit

www.norgren.com

Supported by distributors worldwide.

For further information, scan this QR code or visit www.norgren.com



Norgren, Buschjost, FAS, Herion, Kloehn, Maxseal and Thompson Valves are registered trademarks of Norgren companies.

Due to our policy of continuous development, Norgren reserve the right to change specifications without prior notice.

z8416BR en/07/22

Selected Images used under license from Shutterstock.com

IMI

Incorporating

